

ALL BEND RADIUS .030"

UNLESS OTHERWISE SPECIFIED:
 DIMENSIONS ARE IN INCHES
 TOLERANCES:
 FRACTIONAL ± .003
 ANGULAR: MACH ± .01 BEND ±
 TWO PLACE DECIMAL ±
 THREE PLACE DECIMAL ±.001
 INTERPRET GEOMETRIC
 TOLERANCING PER:
 MATERIAL
 FINISH
 APPLICATION
 DO NOT SCALE DRAWING

| | NAME | DATE |
|-----------|------|------|
| DRAWN | | |
| CHECKED | | |
| ENG APPR. | | |
| MFG APPR. | | |
| Q.A. | | |
| COMMENTS: | | |

| | | |
|-------------------------------------|---------------------|---------------|
| TITLE: | | |
| ALC-PST-MD-30W-96X4-TBR-CFA-16"-27K | | |
| SIZE | DWG. NO. | REV |
| A | TICKET 25844 | |
| SCALE: 1:13 | WEIGHT: | SHEET 1 OF 11 |

5

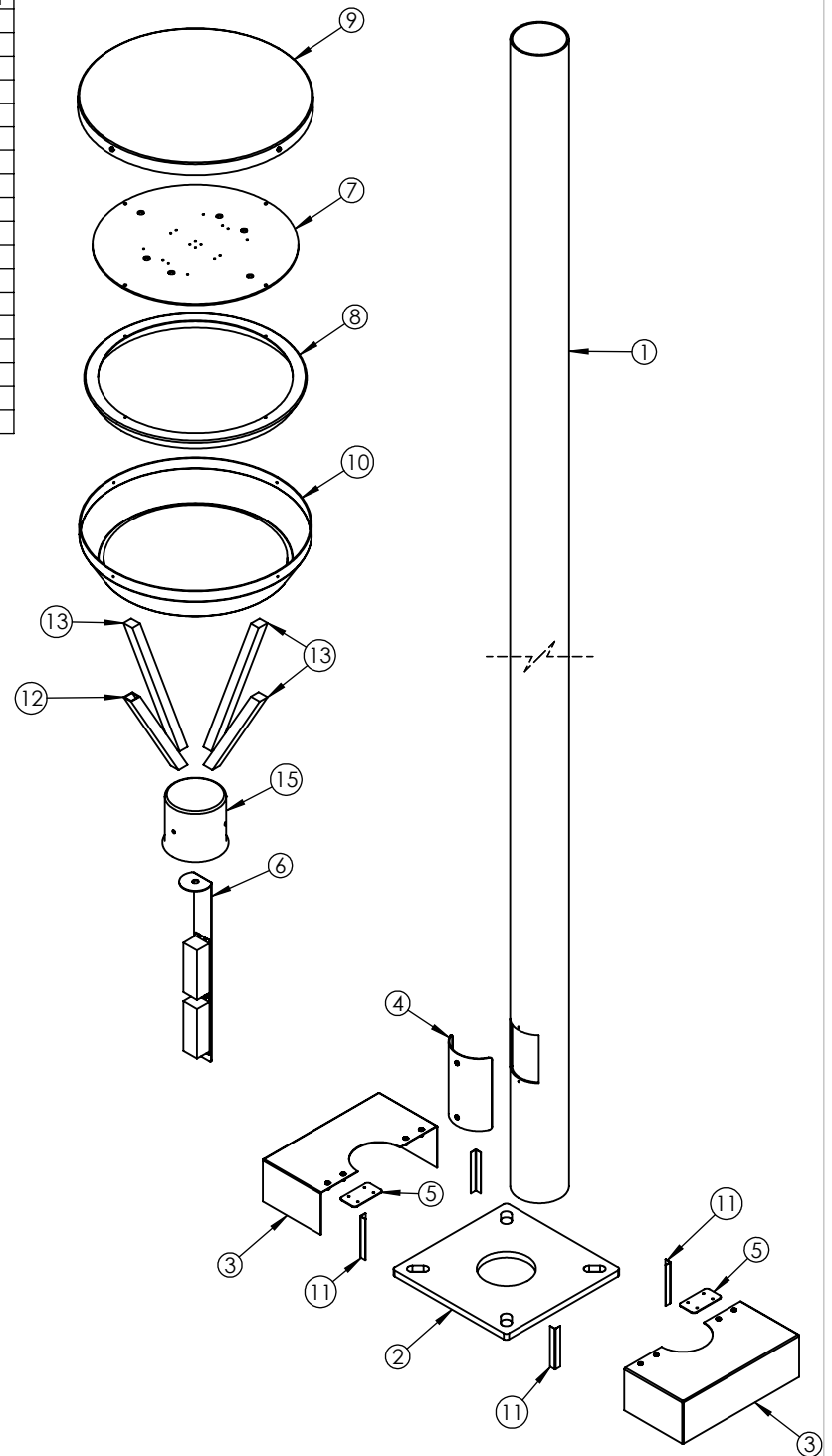
4

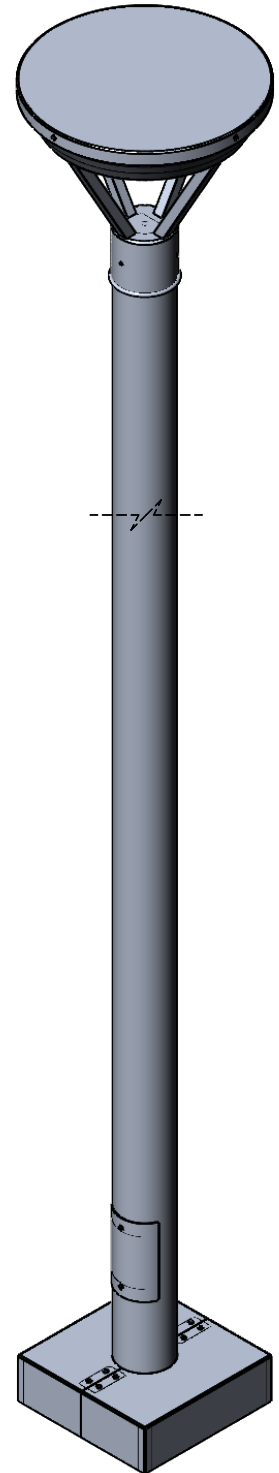
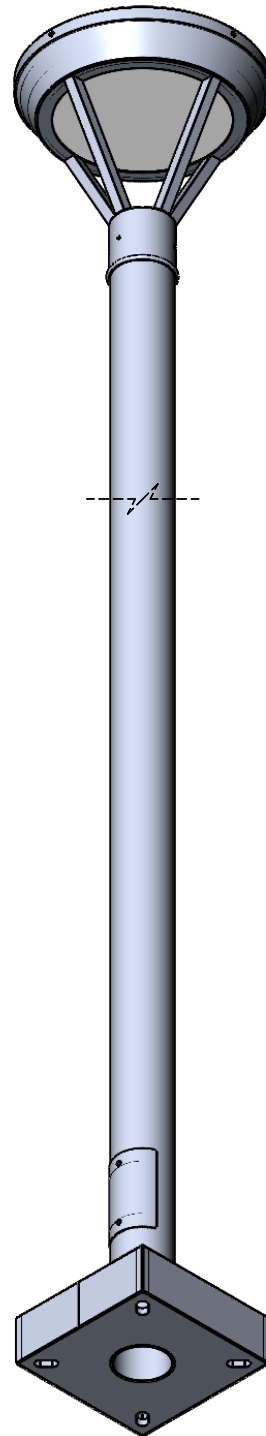
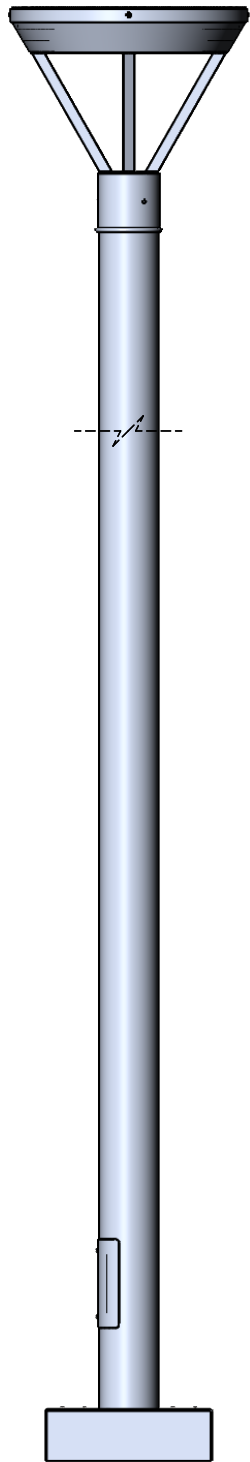
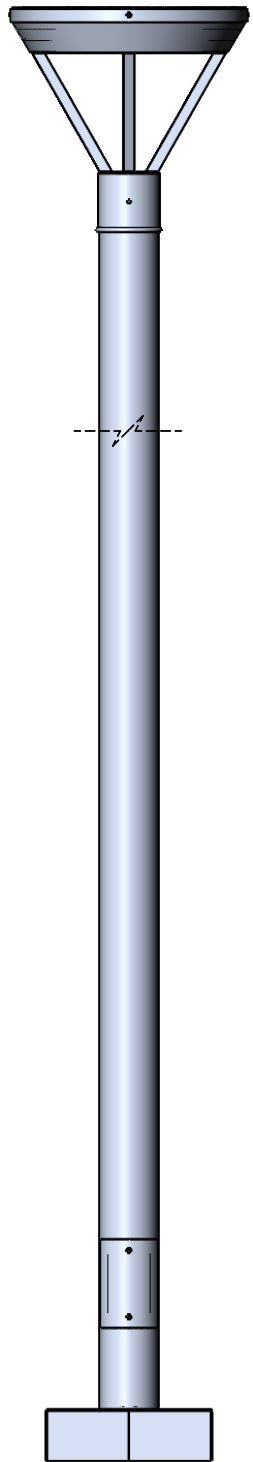
3

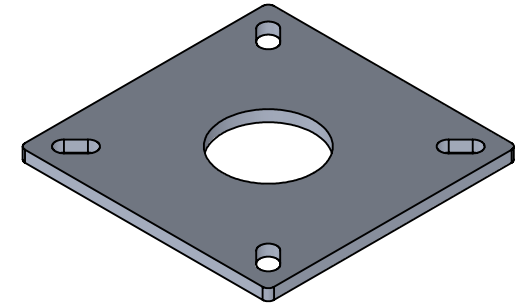
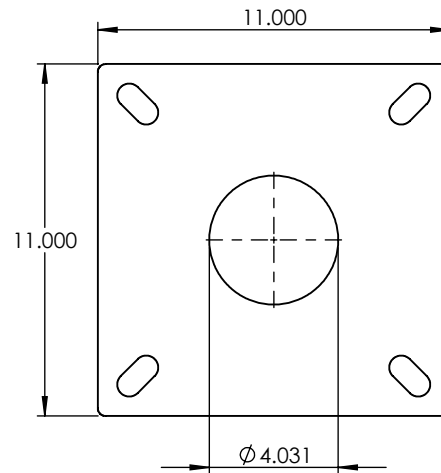
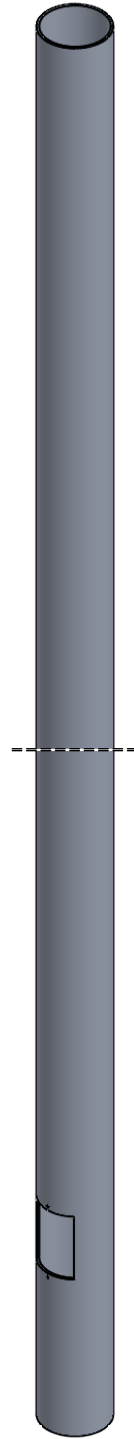
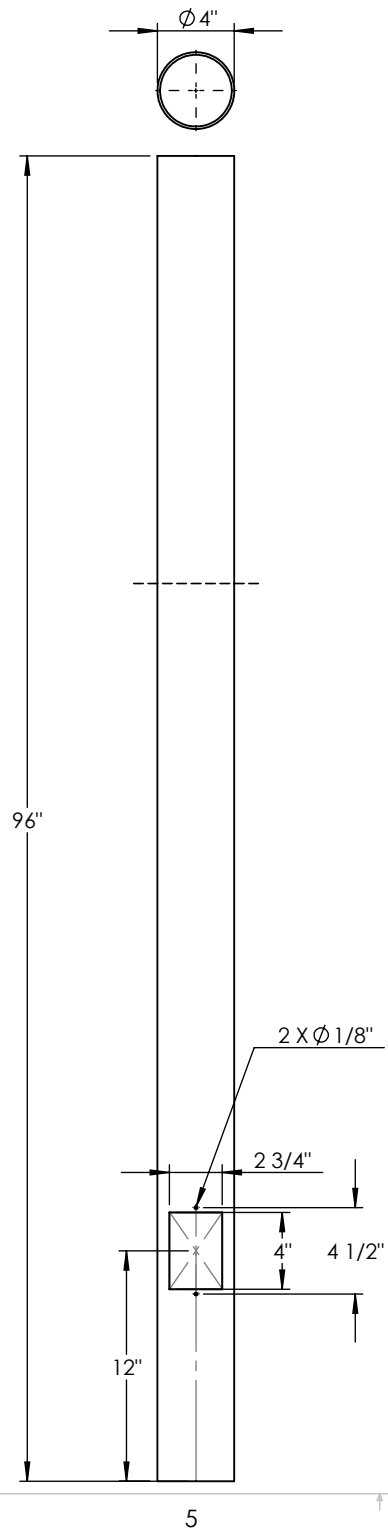
2

1

| ITEM NO. | PART NUMBER | DESCRIPTION | QTY. | CUT |
|----------|--|---------------------------|------|-----|
| 1 | ALC-PST-MD-30W-96X4-TBR-CFA-16"-27K-4" CYLINDER POST | 4" ALUMINUM TUBE | 1 | |
| 2 | ALC-PST-MD-30W-96X4-TBR-CFA-16"-27K-ANCHOR PLATE | ALUMINUM 0.500" PLATE | 1 | |
| 3 | ALC-PST-MD-30W-96X4-TBR-CFA-16"-27K-ANCHOR COVER | ALUMINUM 0.0635" | 2 | |
| 4 | ALC-PST-MD-30W-96X4-TBR-CFA-16"-27K-HAND COVER | ALUMINUM 0.0635" | 1 | |
| 5 | ALC-PST-MD-30W-96X4-TBR-CFA-16"-27K-COVER BRACKET | ALUMINUM 0.0635" | 2 | |
| 6 | ALC-PST-MD-30W-96X4-TBR-CFA-16"-27K-DRIVER BRACKET | ALUMINUM 0.0635" | 1 | |
| 7 | ALC-PST-MD-30W-96X4-TBR-CFA-16"-27K-LED PLATE | ALUMINUM 0.125" PLATE | 1 | |
| 8 | ALC-PST-MD-30W-96X4-TBR-CFA-16"-27K-SPUN LED BRACKET | SPUN ALUMINUM 0.080" | 1 | |
| 9 | ALC-PST-MD-30W-96X4-TBR-CFA-16"-27K-SPUN TOP COVER | SPUN ALUMINUM 0.080" | 1 | |
| 10 | ALC-PST-MD-30W-96X4-TBR-CFA-16"-27K-SPUN SEAT BOWL | SPUN ALUMINUM 0.080" | 1 | |
| 11 | ALC-PST-MD-30W-96X4-TBR-CFA-16"-27K-COVER TAB | 25 GAUGE | 4 | |
| 12 | ALC-B-MD-20W-42"-MBK-CFA-41K-SPACER TUBE ARMS | 1/2" SQUARE ALUMINUM TUBE | 1 | |
| 13 | ALC-B-MD-20W-42"-MBK-CFA-41K-SPACER BAR ARMS | 1/2" SQUARE ALUMINUM BAR | 3 | |
| 14 | ALC-PST-MD-30W-96X4-TBR-CFA-16"-27K-ACRYLIC | ACRYLIC | 1 | |
| 15 | 4" POST FITTER | POST FITTER | 1 | |
| 16 | Altal LED PN1019 SHIM PLATE | ALUMINUM 0.125" PLATE | 4 | |
| 17 | ESPEN VEL29070MVH-1 | DRIVER | 2 | |
| 18 | Altal LED PN1019 RevC | LED | 4 | |







| | | | | | | | |
|--------------------------------------|-----------|------|-------------------------------------|--|----------|----------|-----|
| UNLESS OTHERWISE SPECIFIED: | NAME | DATE | 4" ALUMINUM TUBE | | | | |
| DIMENSIONS ARE IN INCHES | DRAWN | | | | TITLE: | | |
| TOLERANCES: | CHECKED | | ALC-PST-MD-30W-96X4-TBR-CFA-16"-27K | | | | |
| FRACTIONAL \pm | ENG APPR. | | | | SIZE | DWG. NO. | REV |
| ANGULAR: MACH \pm BEND \pm | MFG APPR. | | | | A | | |
| TWO PLACE DECIMAL \pm | Q.A. | | SCALE: 1:10 WEIGHT: | | | | |
| THREE PLACE DECIMAL \pm | COMMENTS: | | SHEET 4 OF 11 | | | | |
| INTERPRET GEOMETRIC TOLERANCING PER: | | | | | | | |
| MATERIAL | | | | | | | |
| FINISH | | | | | | | |
| DO NOT SCALE DRAWING | | | | | | | |

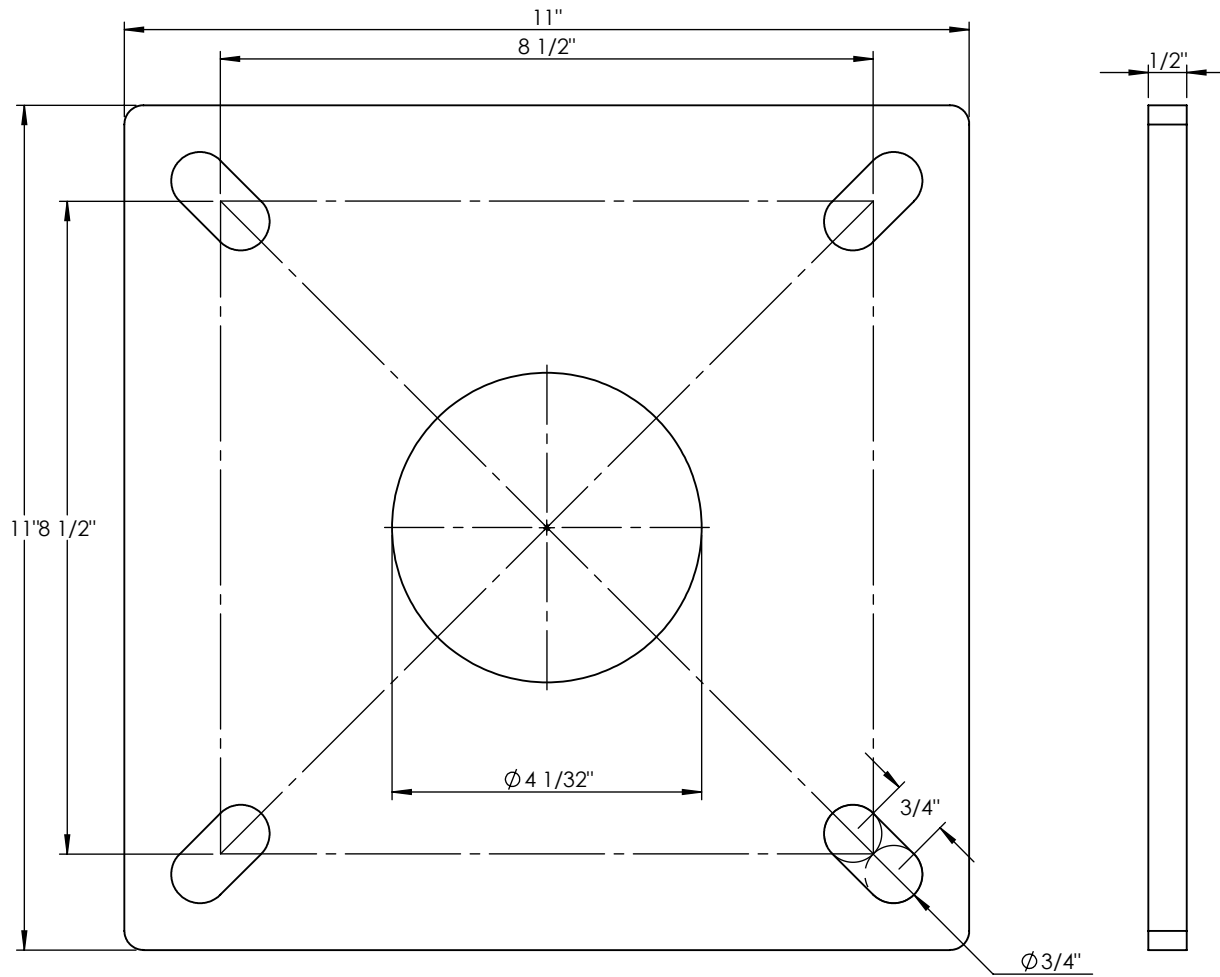
5

4

3

2

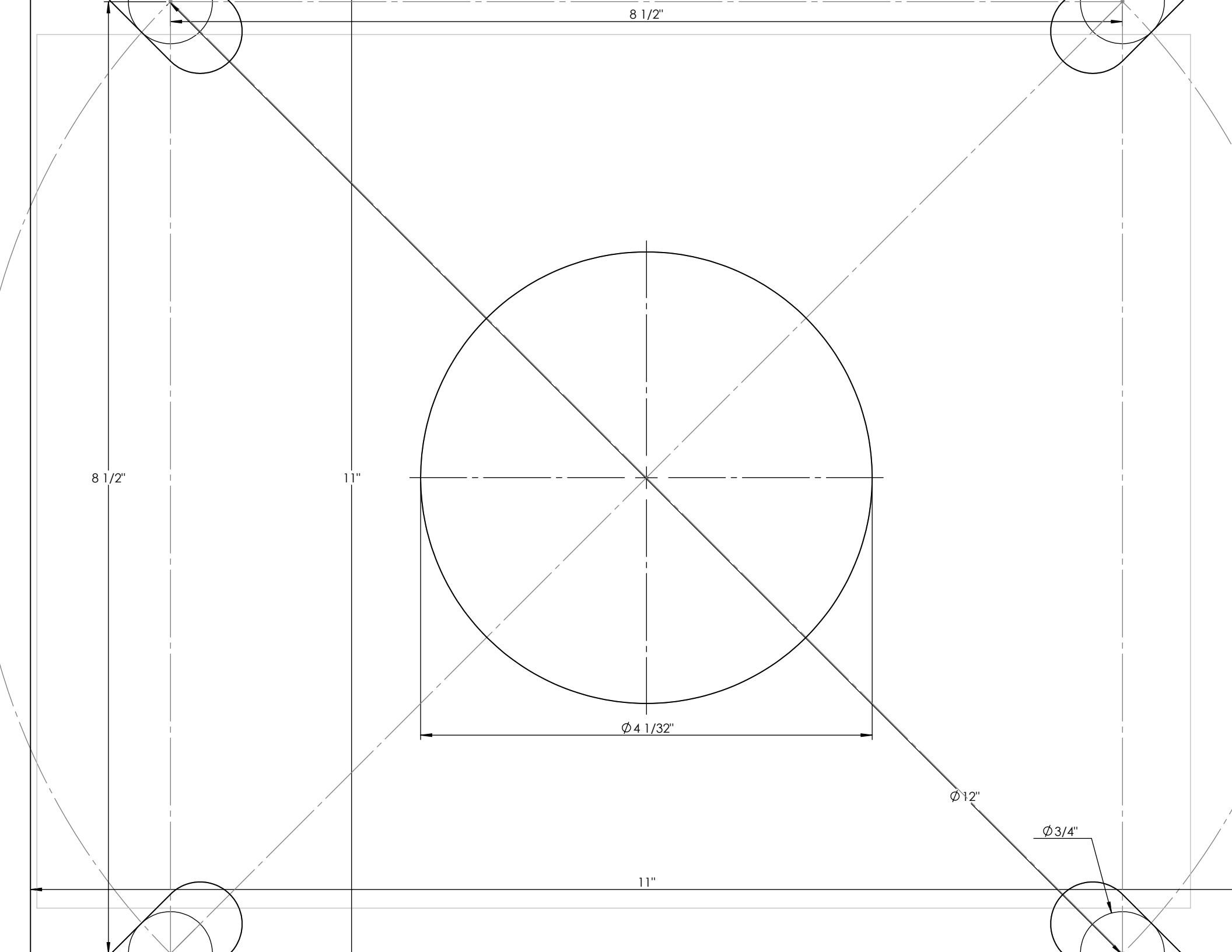
1



| | | | | | | |
|--|-----------|------|------|-------------------------------------|----------|---------------|
| UNLESS OTHERWISE SPECIFIED: DIMENSIONS ARE IN INCHES TOLERANCES: FRACTIONAL ± ANGULAR: MACH ± BEND ± TWO PLACE DECIMAL ± THREE PLACE DECIMAL ± | | NAME | DATE | ALUMINUM 0.500" PLATE | | |
| | DRAWN | | | | | TITLE: |
| | CHECKED | | | ALC-PST-MD-30W-96X4-TBR-CFA-16"-27K | | |
| | ENG APPR. | | | | | |
| | MFG APPR. | | | Q.A. | | |
| INTERPRET GEOMETRIC TOLERANCING PER: | COMMENTS: | | | SIZE | DWG. NO. | REV |
| MATERIAL | | | | A | | |
| FINISH | | | | SCALE: 1:2.5WEIGHT: | | SHEET 5 OF 11 |
| DO NOT SCALE DRAWING | | | | | | |

PROPRIETARY AND CONFIDENTIAL
 THE INFORMATION CONTAINED IN THIS DRAWING IS THE SOLE PROPERTY OF <INSERT COMPANY NAME HERE>. ANY REPRODUCTION IN PART OR AS A WHOLE WITHOUT THE WRITTEN PERMISSION OF <INSERT COMPANY NAME HERE> IS PROHIBITED.

| | |
|-------------|---------|
| NEXT ASSY | USED ON |
| APPLICATION | |



8 1/2"

8 1/2"

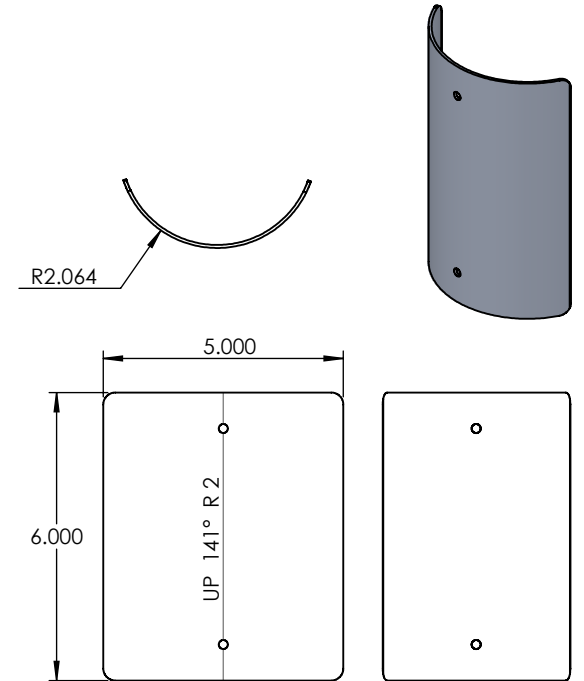
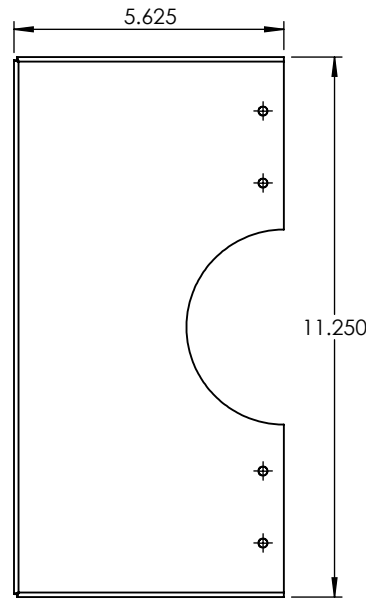
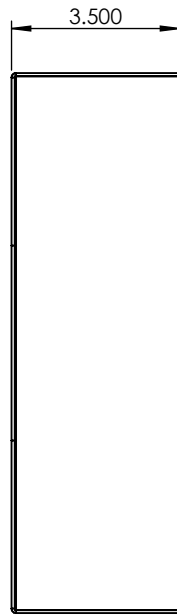
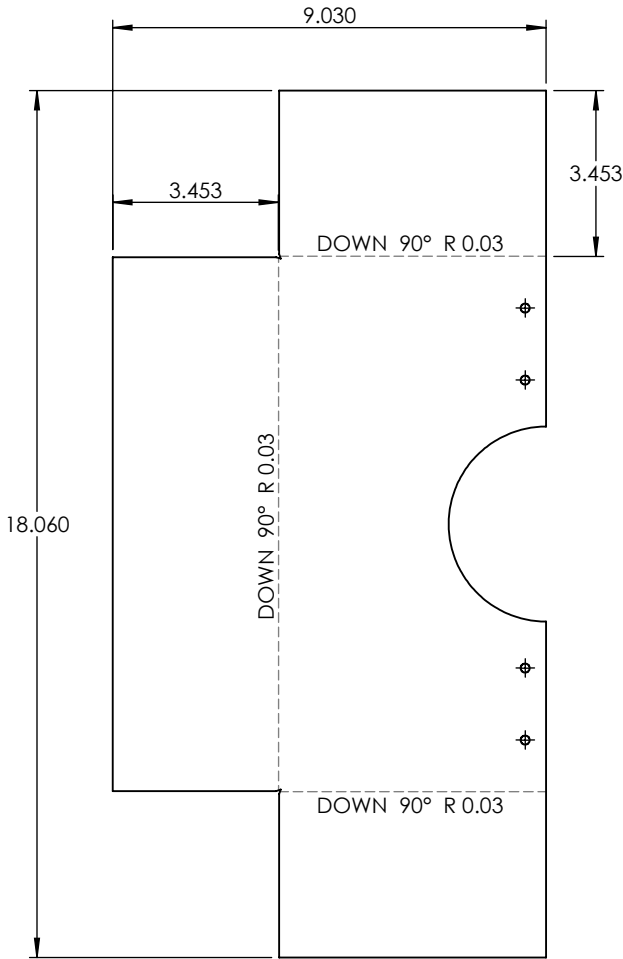
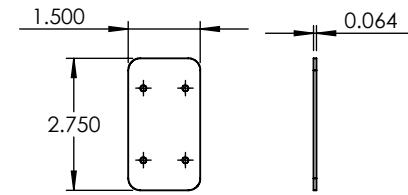
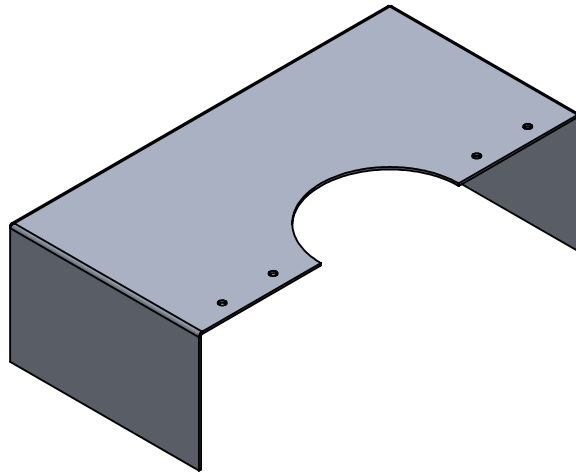
11"

$\Phi 4 \frac{1}{32}"$

11"

$\Phi 12"$

$\Phi \frac{3}{4}"$



UNLESS OTHERWISE SPECIFIED:

DIMENSIONS ARE IN INCHES
 TOLERANCES:
 FRACTIONAL ±
 ANGULAR: MACH ± BEND ±
 TWO PLACE DECIMAL ±
 THREE PLACE DECIMAL ±

INTERPRET GEOMETRIC
 TOLERANCING PER:

MATERIAL

FINISH

DO NOT SCALE DRAWING

NAME

DATE

ALUMINUM 0.0635"

TITLE:

ALC-PST-MD-30W-96X4-TBR-CFA-16"-27K

PROPRIETARY AND CONFIDENTIAL

THE INFORMATION CONTAINED IN THIS
 DRAWING IS THE SOLE PROPERTY OF
 <INSERT COMPANY NAME HERE>. ANY
 REPRODUCTION IN PART OR AS A WHOLE
 WITHOUT THE WRITTEN PERMISSION OF
 <INSERT COMPANY NAME HERE> IS
 PROHIBITED.

| | | |
|-------------|---------|--|
| | | |
| NEXT ASSY | USED ON | |
| APPLICATION | | |

DRAWN

CHECKED

ENG APPR.

MFG APPR.

Q.A.

COMMENTS:

SIZE
A

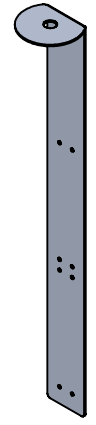
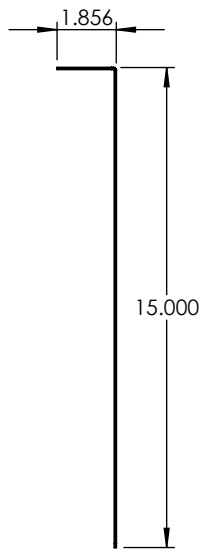
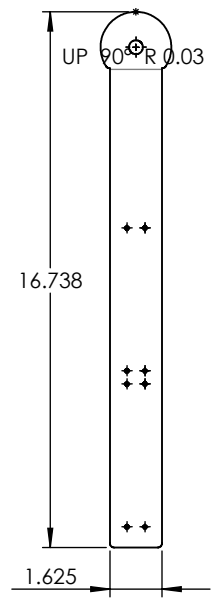
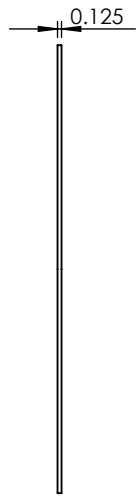
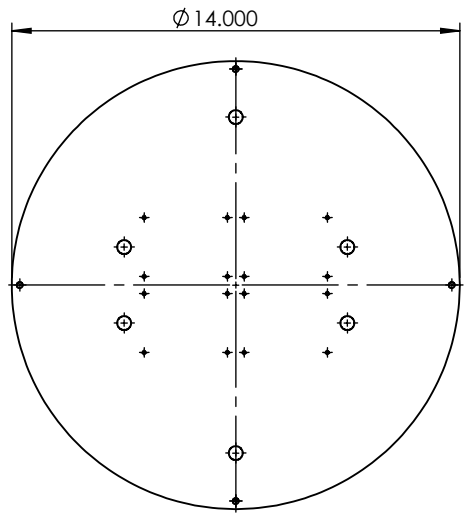
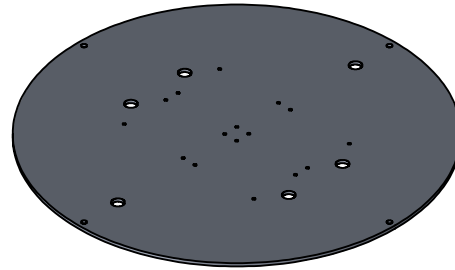
DWG. NO.

REV

SCALE: 1:4

WEIGHT:

SHEET 7 OF 11



PROPRIETARY AND CONFIDENTIAL
 THE INFORMATION CONTAINED IN THIS DRAWING IS THE SOLE PROPERTY OF <INSERT COMPANY NAME HERE>. ANY REPRODUCTION IN PART OR AS A WHOLE WITHOUT THE WRITTEN PERMISSION OF <INSERT COMPANY NAME HERE> IS PROHIBITED.

| | | | | |
|-------------|---------|--------------------------------------|-----------|------|
| | | UNLESS OTHERWISE SPECIFIED: | NAME | DATE |
| | | DIMENSIONS ARE IN INCHES | DRAWN | |
| | | TOLERANCES: | CHECKED | |
| | | FRACTIONAL ± | ENG APPR. | |
| | | ANGULAR: MACH ± BEND ± | MFG APPR. | |
| | | TWO PLACE DECIMAL ± | Q.A. | |
| | | THREE PLACE DECIMAL ± | COMMENTS: | |
| | | INTERPRET GEOMETRIC TOLERANCING PER: | | |
| | | MATERIAL | | |
| NEXT ASSY | USED ON | FINISH | | |
| APPLICATION | | DO NOT SCALE DRAWING | | |

| | | |
|-------------------------------------|----------|---------------|
| ALUMINUM 0.125" PLATE | | |
| TITLE: | | |
| ALC-PST-MD-30W-96X4-TBR-CFA-16"-27K | | |
| SIZE | DWG. NO. | REV |
| A | | |
| SCALE: 1:6 | WEIGHT: | SHEET 8 OF 11 |

5

4

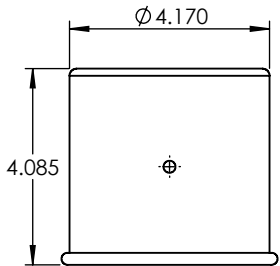
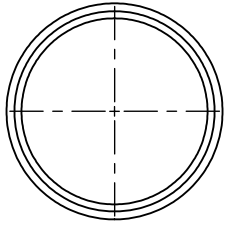
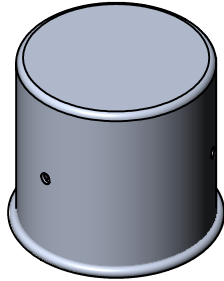
3

2

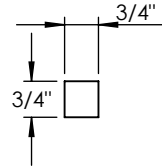
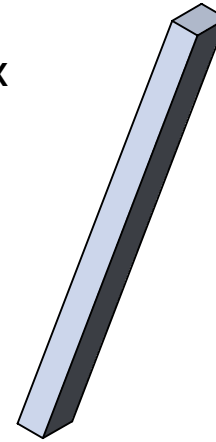
1

| ITEM NO. | PART NUMBER | DESCRIPTION | QTY. |
|----------|----------------|-------------|------|
| 1 | 4" POST FITTER | POST FITTER | 1 |

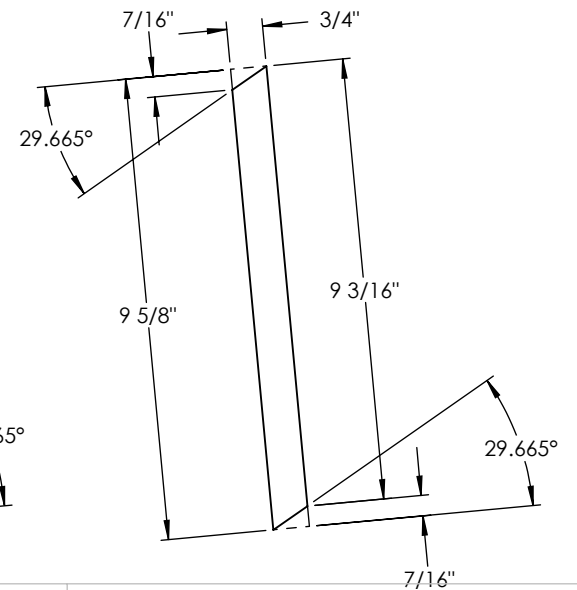
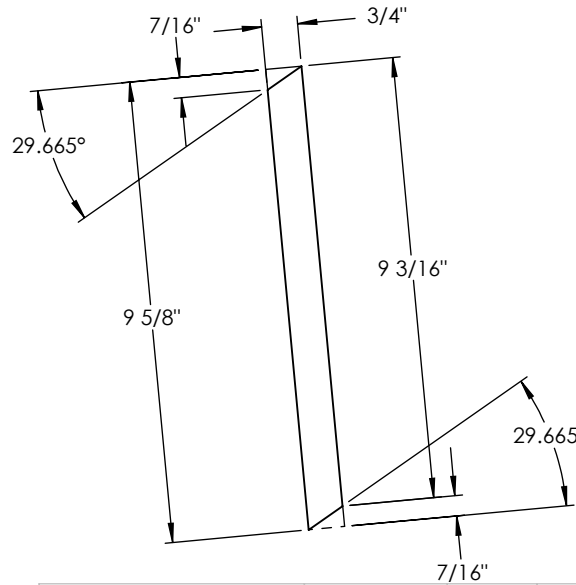
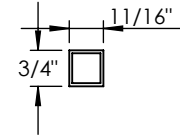
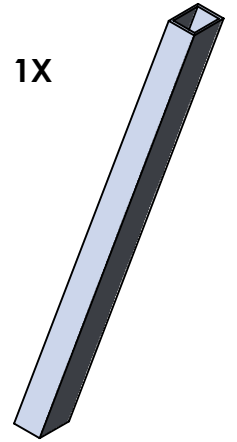
1/8" ALUMINUM



3X



1X



UNLESS OTHERWISE SPECIFIED:

DIMENSIONS ARE IN INCHES
 TOLERANCES:
 FRACTIONAL ±
 ANGULAR: MACH ± BEND ±
 TWO PLACE DECIMAL ±
 THREE PLACE DECIMAL ±

INTERPRET GEOMETRIC
 TOLERANCING PER:

MATERIAL

FINISH

DO NOT SCALE DRAWING

NAME DATE

DRAWN
 CHECKED
 ENG APPR.
 MFG APPR.

Q.A.
 COMMENTS:

POST FITTER

TITLE:

ALC-PST-MD-30W-96X4-TBR-CFA-16"-27K

SIZE DWG. NO.

REV

A

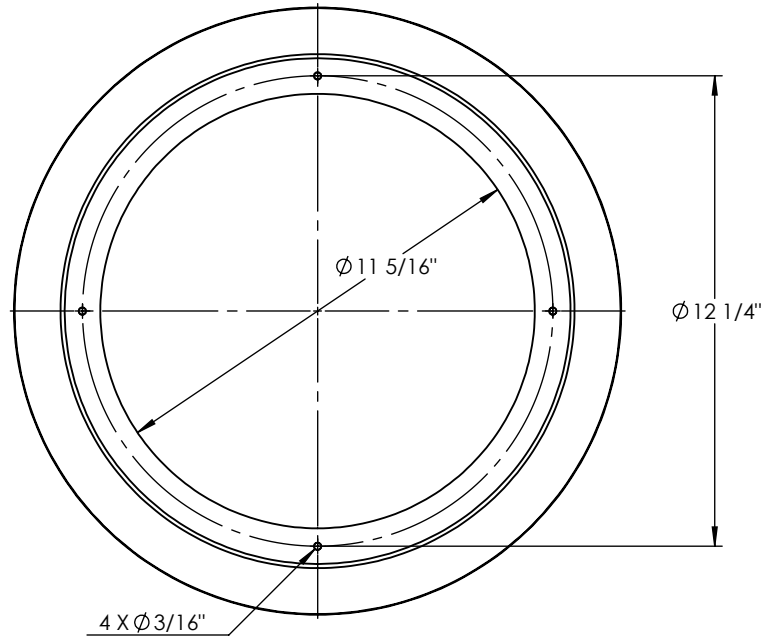
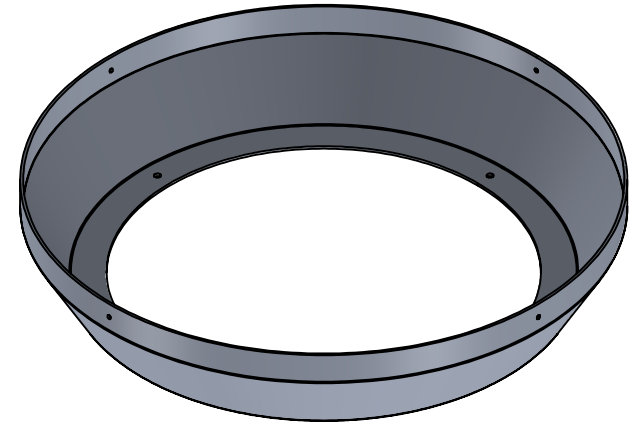
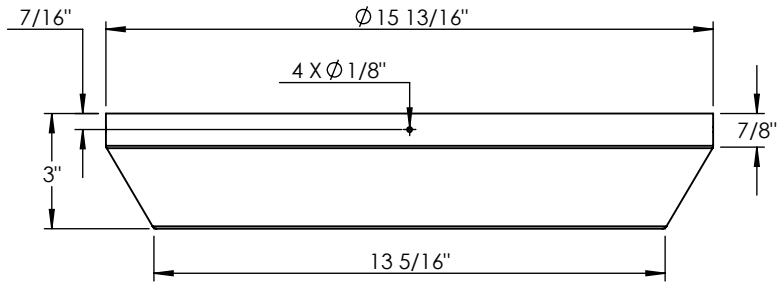
SCALE: 1:4 WEIGHT:

SHEET 9 OF 11

PROPRIETARY AND CONFIDENTIAL
 THE INFORMATION CONTAINED IN THIS
 DRAWING IS THE SOLE PROPERTY OF
 <INSERT COMPANY NAME HERE>. ANY
 REPRODUCTION IN PART OR AS A WHOLE
 WITHOUT THE WRITTEN PERMISSION OF
 <INSERT COMPANY NAME HERE> IS
 PROHIBITED.

| | | |
|-----------|---------|-------------|
| NEXT ASSY | USED ON | APPLICATION |
| | | |

| ITEM NO. | PART NUMBER | DESCRIPTION | QTY. |
|----------|--|----------------------|------|
| 1 | ALC-PST-MD-30W-96X4-TBR-CFA-16"-27K-SPUN SEAT BOWL | SPUN ALUMINUM 0.080" | 1 |

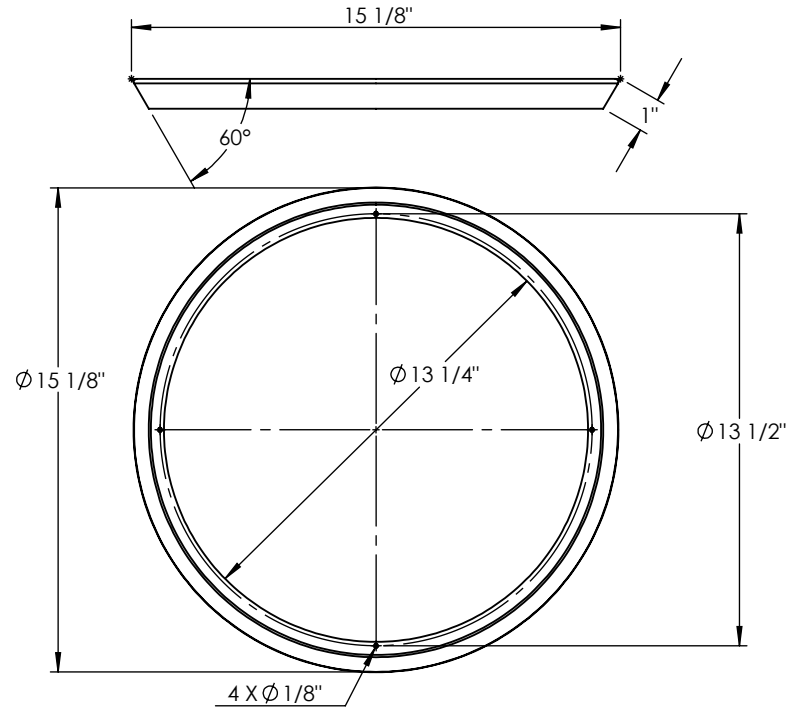
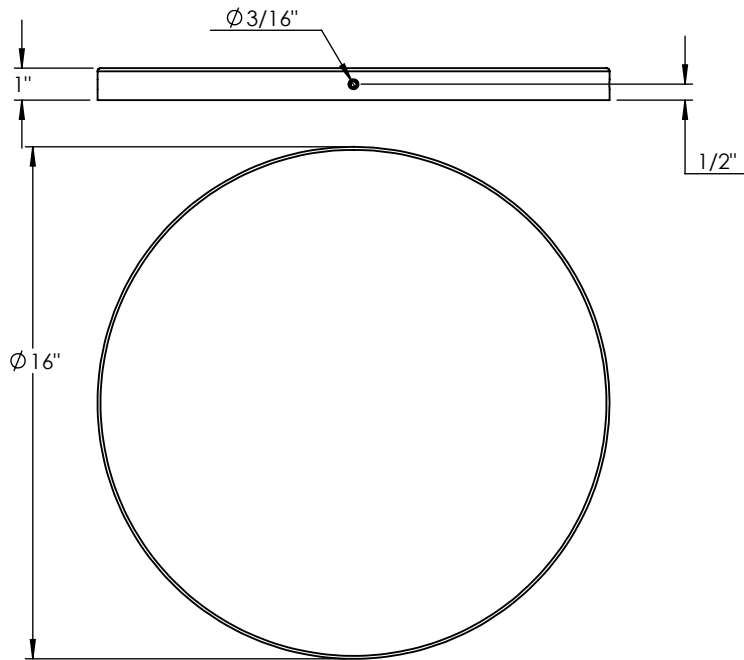
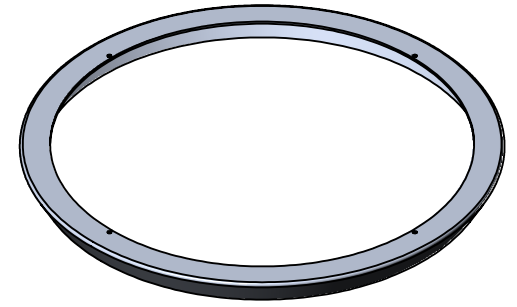
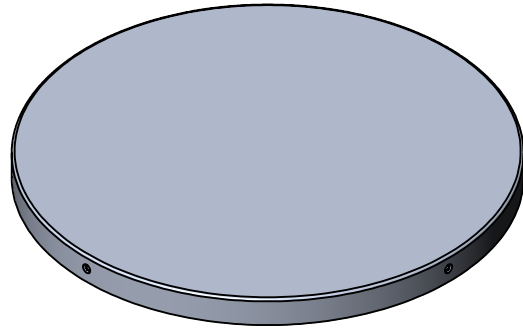


PROPRIETARY AND CONFIDENTIAL
 THE INFORMATION CONTAINED IN THIS DRAWING IS THE SOLE PROPERTY OF <INSERT COMPANY NAME HERE>. ANY REPRODUCTION IN PART OR AS A WHOLE WITHOUT THE WRITTEN PERMISSION OF <INSERT COMPANY NAME HERE> IS PROHIBITED.

| | | | | | | |
|-------------|---------|--------------------------------------|-----------|------|-------------------------------------|--|
| | | UNLESS OTHERWISE SPECIFIED: | NAME | DATE | SPUN ALUMINUM 0.080" | |
| | | DIMENSIONS ARE IN INCHES | DRAWN | | TITLE: | |
| | | TOLERANCES: | CHECKED | | ALC-PST-MD-30W-96X4-TBR-CFA-16"-27K | |
| | | FRACTIONAL ± | ENG APPR. | | SIZE DWG. NO. REV | |
| | | ANGULAR: MACH ± BEND ± | MFG APPR. | | A | |
| | | TWO PLACE DECIMAL ± | Q.A. | | SCALE: 1:13 WEIGHT: SHEET 10 OF 11 | |
| | | THREE PLACE DECIMAL ± | COMMENTS: | | | |
| | | INTERPRET GEOMETRIC TOLERANCING PER: | | | | |
| | | MATERIAL | | | | |
| NEXT ASSY | USED ON | FINISH | | | | |
| APPLICATION | | DO NOT SCALE DRAWING | | | | |

| ITEM NO. | PART NUMBER | DESCRIPTION | QTY. |
|----------|--|----------------------|------|
| 1 | ALC-PST-MD-30W-96X4-TBR-CFA-16"-27K-SPUN TOP COVER | SPUN ALUMINUM 0.080" | 1 |

| ITEM NO. | PART NUMBER | DESCRIPTION | QTY. |
|----------|--|----------------------|------|
| 1 | ALC-PST-MD-30W-96X4-TBR-CFA-16"-27K-SPUN LED BRACKET | SPUN ALUMINUM 0.080" | 1 |



PROPRIETARY AND CONFIDENTIAL
 THE INFORMATION CONTAINED IN THIS DRAWING IS THE SOLE PROPERTY OF <INSERT COMPANY NAME HERE>. ANY REPRODUCTION IN PART OR AS A WHOLE WITHOUT THE WRITTEN PERMISSION OF <INSERT COMPANY NAME HERE> IS PROHIBITED.

| | | UNLESS OTHERWISE SPECIFIED: | NAME | DATE |
|-------------|---------|--------------------------------------|-----------|------|
| | | DIMENSIONS ARE IN INCHES | DRAWN | |
| | | TOLERANCES: | CHECKED | |
| | | FRACTIONAL ± | ENG APPR. | |
| | | ANGULAR: MACH ± BEND ± | MFG APPR. | |
| | | TWO PLACE DECIMAL ± | Q.A. | |
| | | THREE PLACE DECIMAL ± | COMMENTS: | |
| | | INTERPRET GEOMETRIC TOLERANCING PER: | | |
| | | MATERIAL | | |
| NEXT ASSY | USED ON | FINISH | | |
| APPLICATION | | DO NOT SCALE DRAWING | | |

SPUN ALUMINUM 0.080"

TITLE:
 ALC-PST-MD-30W-96X4-TBR-CFA-16"-27K

SIZE DWG. NO. REV
A

SCALE: 1:6 WEIGHT: SHEET 11 OF 11