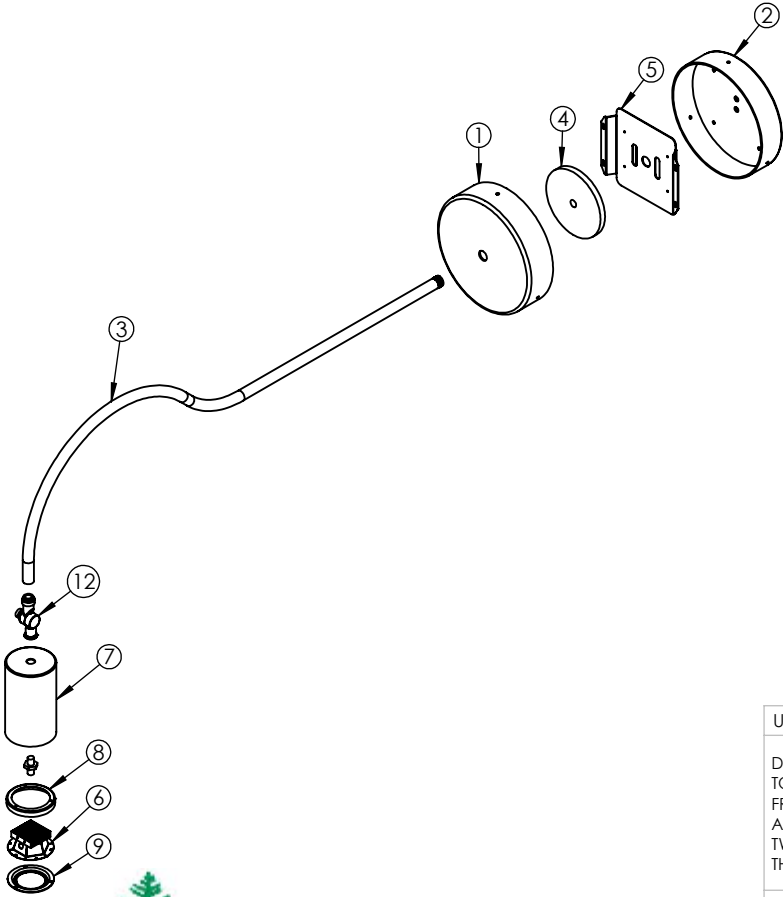
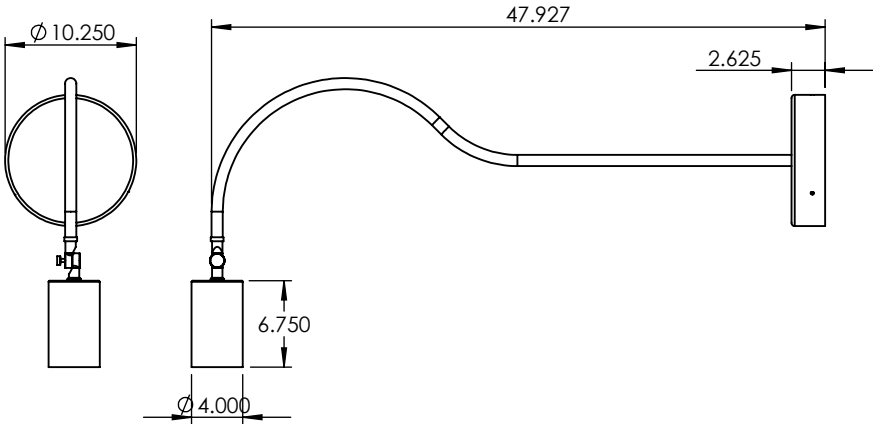


| ITEM NO. | PART NUMBER | DESCRIPTION | QTY. | CUT |
|----------|--|-----------------------|------|-----|
| 1 | BLT-10LED-E1-MN-CFA-48"STM-35K-SPUN CANOPY | SPUN ALUMINUM 0.125" | 1 | |
| 2 | BLT-10LED-E1-MN-CFA-48"STM-35K-SPUN FIREPLATE | SPUN ALUMINUM 0.125" | 1 | |
| 3 | BLT-10LED-E1-MN-CFA-48"STM-35K-E1 ARM TUBE | 7/8" ALUMINUM TUBE | 1 | |
| 4 | BLT-10LED-E1-MN-CFA-48"STM-35K-CANOPY BRACKET | ALUMINUM 0.500" PLATE | 1 | |
| 5 | BLT-10LED-E1-MN-CFA-48"STM-35K-DRIVER BRACKET | ALUMINUM 0.0635" | 1 | |
| 6 | BLT-10LED-E1-MN-CFA-48"STM-35K-CONE REFLECTOR | 22 GAUGE | 1 | |
| 7 | BLT-10LED-E1-MN-CFA-48"STM-35K-SPUN CYLINDER | SPUN ALUMINUM 0.080" | 1 | |
| 8 | BLT-10LED-E1-MN-CFA-48"STM-35K-SPUN DOOR BRACKET | SPUN ALUMINUM 0.0635" | 1 | |
| 9 | BLT-10LED-E1-MN-CFA-48"STM-35K-SPUN DOOR | SPUN ALUMINUM 0.0635" | 1 | |
| 10 | BLT-10LED-E1-MN-CFA-48"STM-35K-KIT KNUCKLE COMPRESSOR RING | KIT KNUCKLE | 1 | |
| 11 | BLT-10LED-E1-MN-CFA-48"STM-35K-KIT KNUCKLE FEMALE | KIT KNUCKLE | 1 | |
| 12 | BLT-10LED-E1-MN-CFA-48"STM-35K-KIT KNUCKLE MALE | KIT KNUCKLE | 1 | |
| 13 | BLT-10LED-E1-MN-CFA-48"STM-35K-KIT KNUCKLE THUMB SCREWNUT | KIT KNUCKLE | 1 | |
| 14 | BLT-10LED-E1-MN-CFA-48"STM-35K-0.500" NIPPLE | NIPPLE | 1 | |
| 15 | BLT-10LED-E1-MN-CFA-48"STM-35K-0.500" NUT | NUT | 1 | |
| 16 | BLT-10LED-E1-MN-CFA-48"STM-35K-ACRYLIC | ACRYLIC | 1 | |
| 17 | 55 MM HEAT SINK | HEAT SINK | 1 | |
| 18 | DS-15W-350C1542010-3001 | DRIVER | 1 | |
| 19 | Alttailed_PCN_D1500_110B-10 WATT | LED | 1 | |



EVERGREEN LIGHTING

ALL BEND RADIUS .030"

APPLICATION

DO NOT SCALE DRAWING

UNLESS OTHERWISE SPECIFIED:

DIMENSIONS ARE IN INCHES
TOLERANCES:
FRACTIONAL $\pm .003$
ANGULAR: MACH $\pm .01$ BEND \pm
TWO PLACE DECIMAL \pm
THREE PLACE DECIMAL $\pm .001$

INTERPRET GEOMETRIC
TOLERANCING PER:

MATERIAL

FINISH

NAME DATE

DRAWN
CHECKED
ENG APPR.
MFG APPR.

Q.A.
COMMENTS:

TITLE:

BLT-10LED-E1-MN-CFA-48"STM-35K

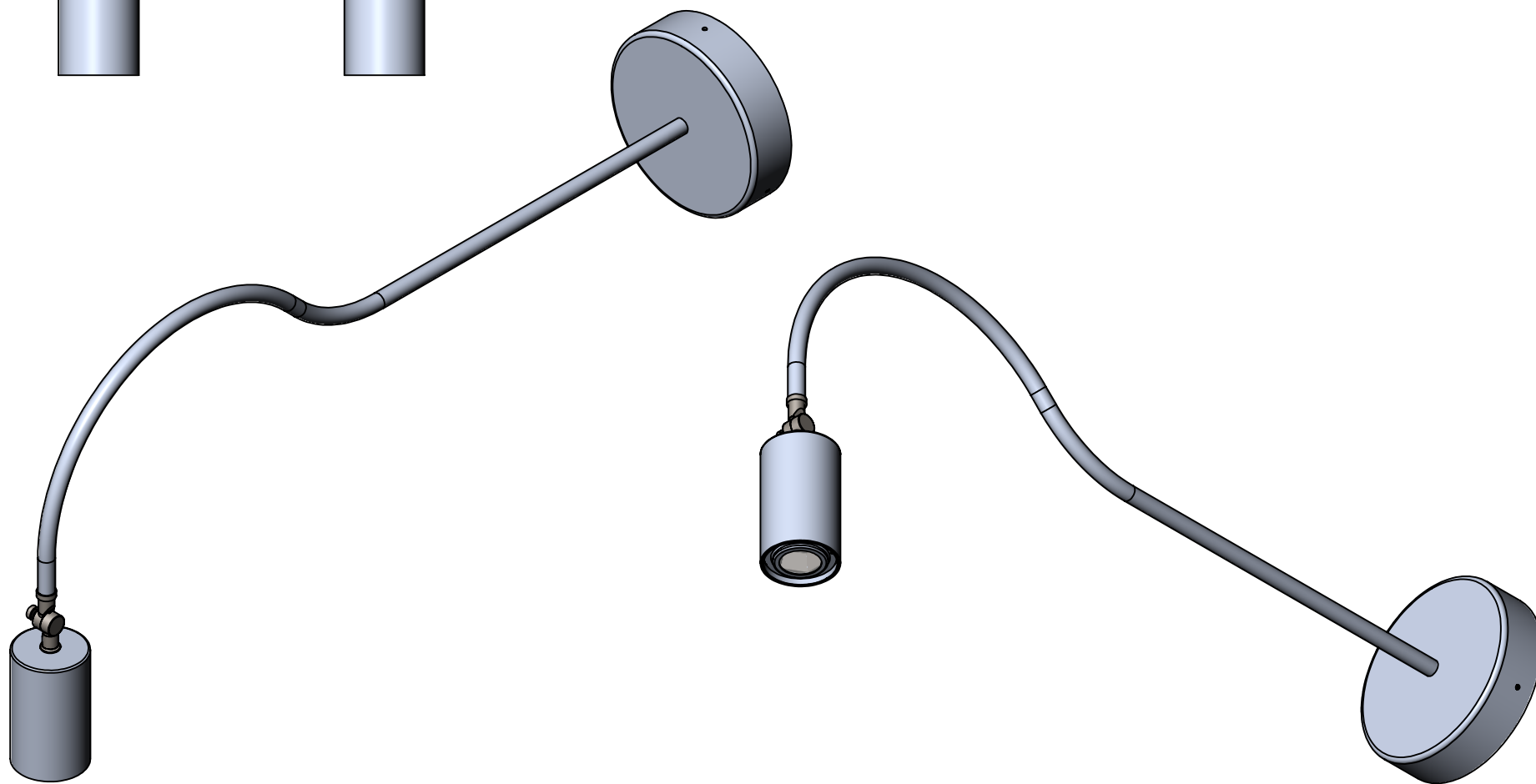
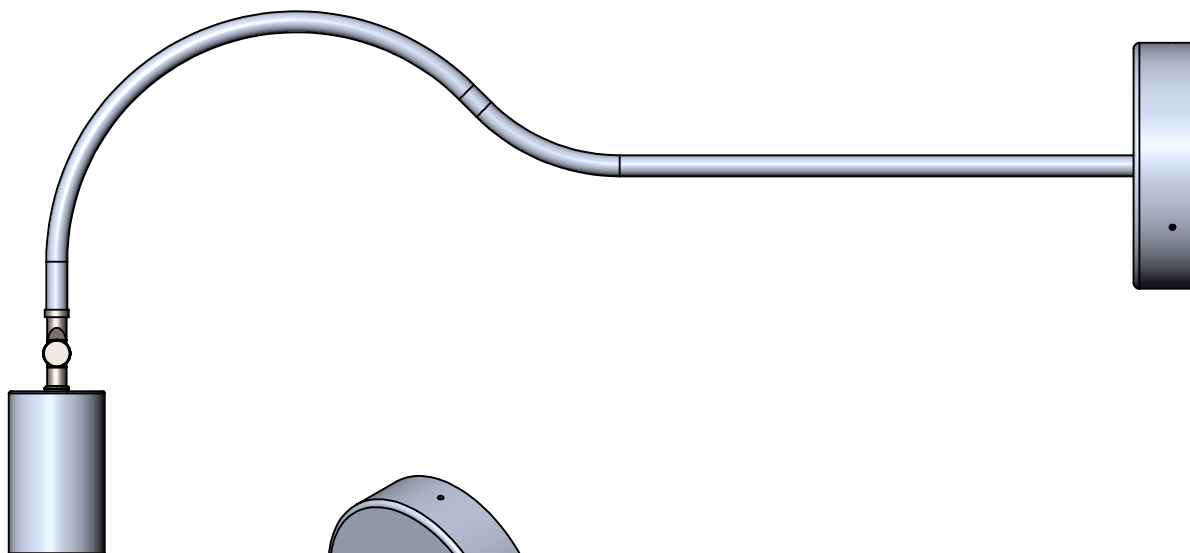
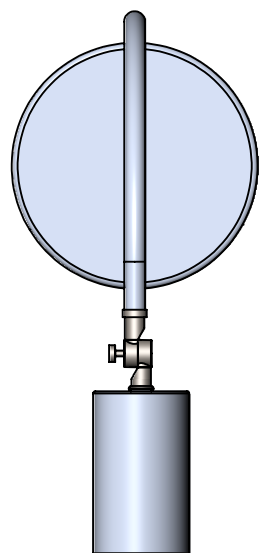
SIZE DWG. NO.

A TICKET 24639

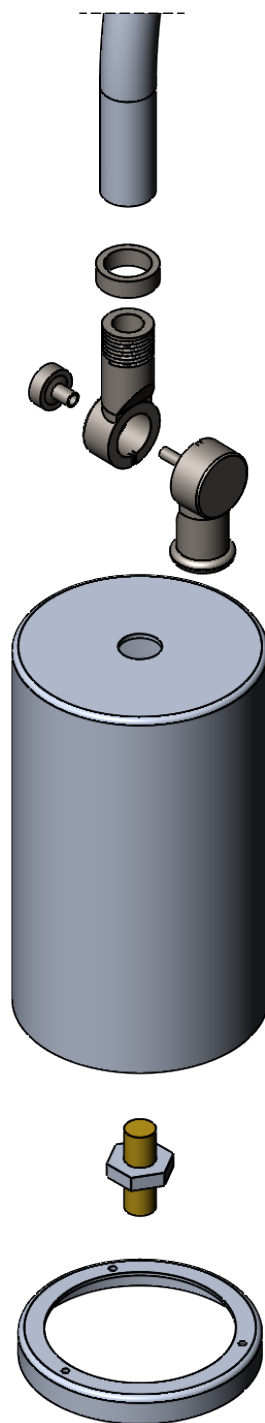
REV

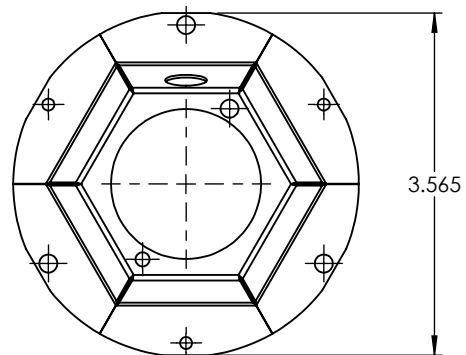
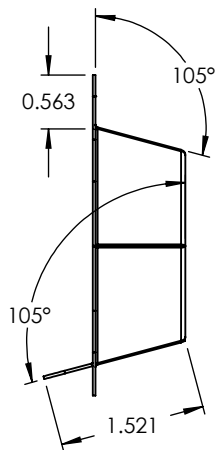
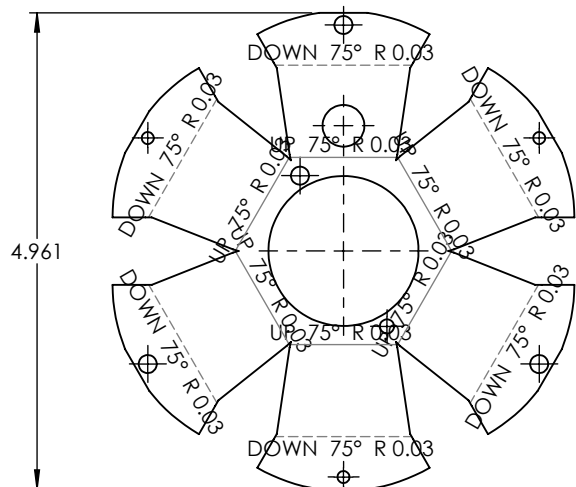
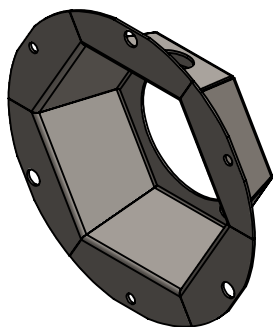
SCALE: 1:15 WEIGHT:

SHEET 1 OF 11



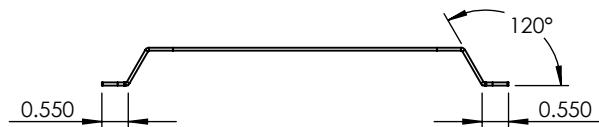
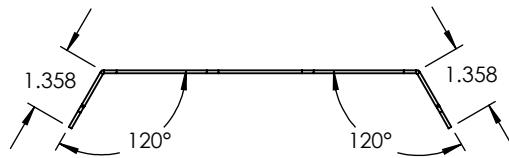
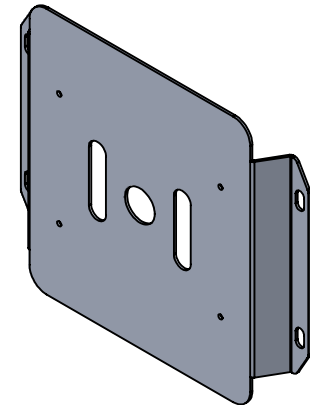
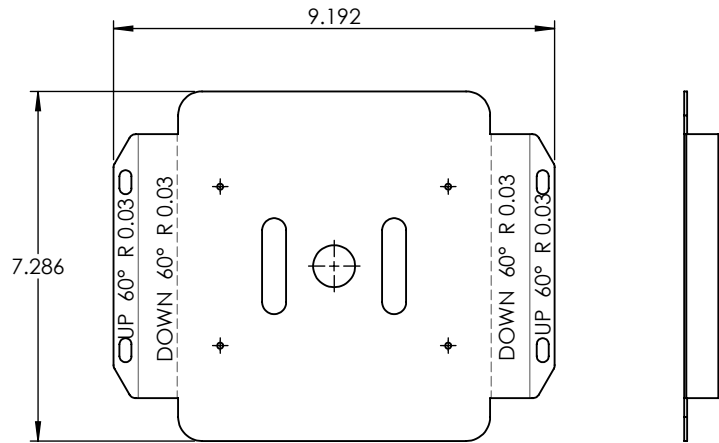






PROPRIETARY AND CONFIDENTIAL
THE INFORMATION CONTAINED IN THIS
DRAWING IS THE SOLE PROPERTY OF
<INSERT COMPANY NAME HERE>. ANY
REPRODUCTION IN PART OR AS A WHOLE
WITHOUT THE WRITTEN PERMISSION OF
<INSERT COMPANY NAME HERE> IS
PROHIBITED.

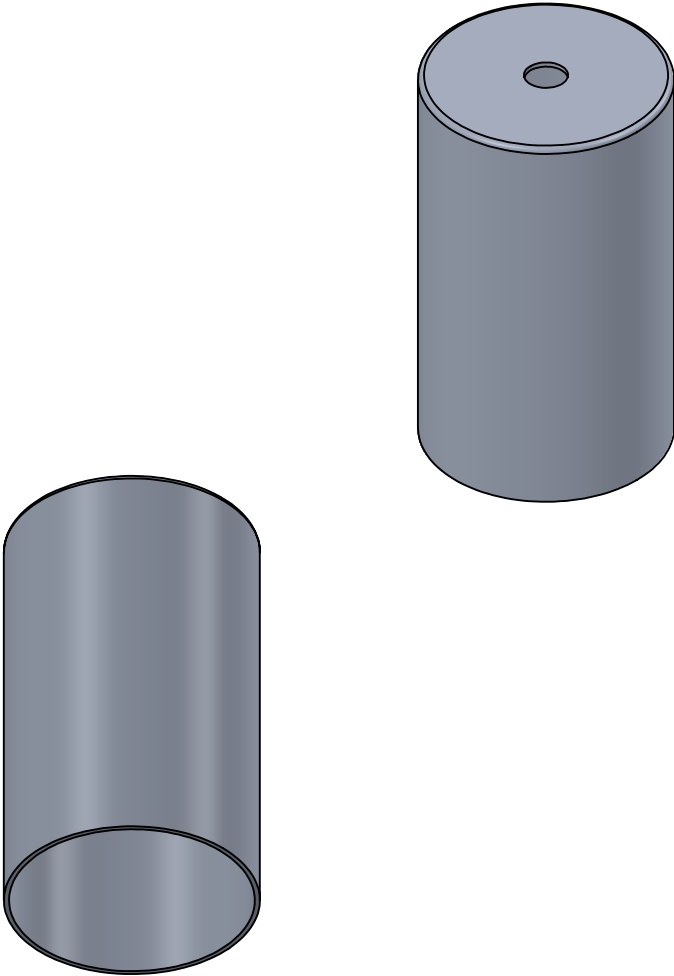
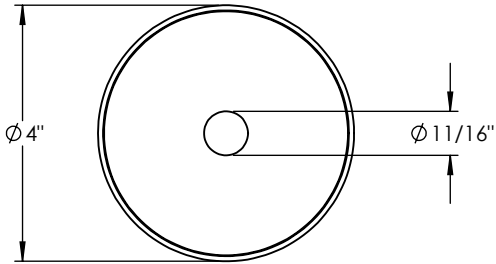
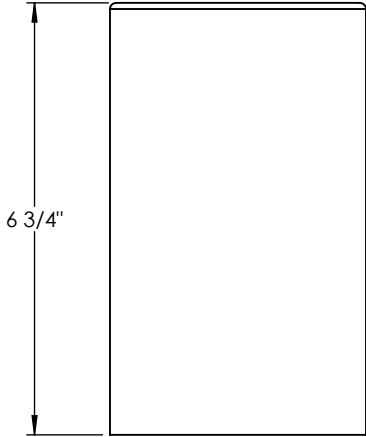
| | | | | | | | | |
|-------------|---------|--------------------------------------|-----------|------|------|--|--|--|
| | | UNLESS OTHERWISE SPECIFIED: | | NAME | DATE | 22 GAUGE | | |
| | | DIMENSIONS ARE IN INCHES | DRAWN | | | TITLE: BLT-10LED-E1-MN-CFA-48"STM-35K | | |
| | | TOLERANCES: | CHECKED | | | | | |
| | | FRACTIONAL ± | ENG APPR. | | | | | |
| | | ANGULAR: MACH± BEND ± | MFG APPR. | | | | | |
| | | TWO PLACE DECIMAL ± | Q.A. | | | SIZE DWG. NO. REV A | | |
| | | THREE PLACE DECIMAL ± | COMMENTS: | | | | | |
| | | INTERPRET GEOMETRIC TOLERANCING PER: | | | | | | |
| | | MATERIAL | | | | | | |
| NEXT ASSY | USED ON | FINISH | | | | | | |
| APPLICATION | | DO NOT SCALE DRAWING | | | | SCALE: 1:2 WEIGHT: SHEET 5 OF 11 | | |



PROPRIETARY AND CONFIDENTIAL
THE INFORMATION CONTAINED IN THIS
DRAWING IS THE SOLE PROPERTY OF
<INSERT COMPANY NAME HERE>. ANY
REPRODUCTION IN PART OR AS A WHOLE
WITHOUT THE WRITTEN PERMISSION OF
<INSERT COMPANY NAME HERE> IS
PROHIBITED.

| | | | | | | | |
|-------------------|--|--------------------------------------|--|-----------|------|--|--|
| | | UNLESS OTHERWISE SPECIFIED: | | NAME | DATE | ALUMINUM 0.0635" | |
| | | DIMENSIONS ARE IN INCHES | | DRAWN | | TITLE: BLT-10LED-E1-MN-CFA-48"STM-35K | |
| | | TOLERANCES: | | CHECKED | | | |
| | | FRACTIONAL ± | | ENG APPR. | | | |
| | | ANGULAR: MACH ± BEND ± | | MFG APPR. | | | |
| | | TWO PLACE DECIMAL ± | | Q.A. | | SIZE DWG. NO. REV | |
| | | THREE PLACE DECIMAL ± | | COMMENTS: | | | |
| | | INTERPRET GEOMETRIC TOLERANCING PER: | | | | | |
| | | MATERIAL | | | | SCALE: 1:4 WEIGHT: SHEET 6 OF 11 | |
| | | FINISH | | | | | |
| NEXT ASSY USED ON | | | | | | | |
| APPLICATION | | DO NOT SCALE DRAWING | | | | | |

| ITEM NO. | PART NUMBER | DESCRIPTION | QTY. |
|----------|--|----------------------|------|
| 1 | BLT-10LED-E1-MN-CFA-48"STM-35K-SPUN CYLINDER | SPUN ALUMINUM 0.080" | 1 |



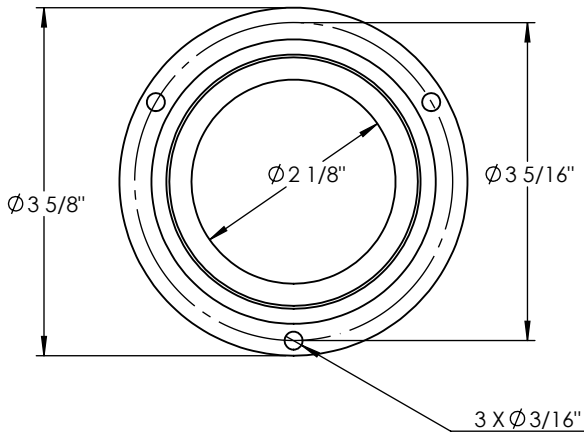
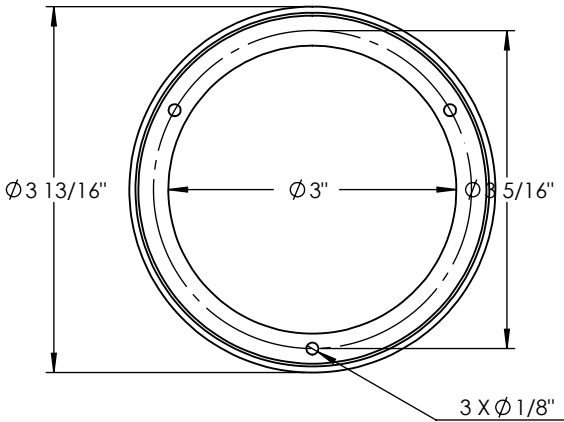
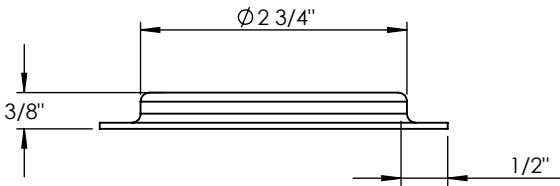
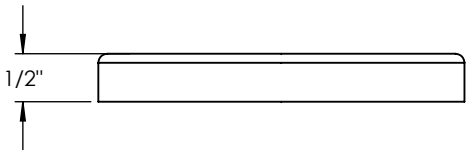
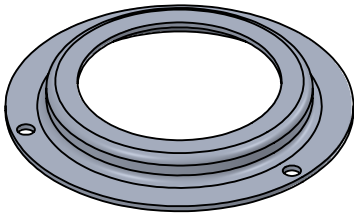
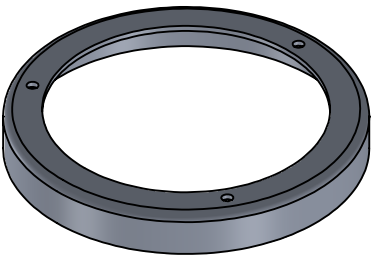
PROPRIETARY AND CONFIDENTIAL
 THE INFORMATION CONTAINED IN THIS
 DRAWING IS THE SOLE PROPERTY OF
 <INSERT COMPANY NAME HERE>. ANY
 REPRODUCTION IN PART OR AS A WHOLE
 WITHOUT THE WRITTEN PERMISSION OF
 <INSERT COMPANY NAME HERE> IS
 PROHIBITED.

| | | | | | |
|-----------|-------------|--------------------------------------|-----------|------|------|
| | | UNLESS OTHERWISE SPECIFIED: | | NAME | DATE |
| | | DIMENSIONS ARE IN INCHES | DRAWN | | |
| | | TOLERANCES: | CHECKED | | |
| | | FRACTIONAL ± | ENG APPR. | | |
| | | ANGULAR: MACH ± BEND ± | MFG APPR. | | |
| | | TWO PLACE DECIMAL ± | Q.A. | | |
| | | THREE PLACE DECIMAL ± | COMMENTS: | | |
| | | INTERPRET GEOMETRIC TOLERANCING PER: | | | |
| | | MATERIAL | | | |
| NEXT ASSY | USED ON | FINISH | | | |
| | APPLICATION | DO NOT SCALE DRAWING | | | |

| | | |
|--------------------------------|----------|---------------|
| SPUN ALUMINUM 0.080" | | |
| TITLE: | | |
| BLT-10LED-E1-MN-CFA-48"STM-35K | | |
| SIZE | DWG. NO. | REV |
| A | | |
| SCALE: 1:3 | WEIGHT: | SHEET 7 OF 11 |

| ITEM NO. | PART NUMBER | DESCRIPTION | QTY. |
|----------|--|-----------------------|------|
| 1 | BLT-10LED-E1-MN-CFA-48"STM-35K-SPUN DOOR BRACKET | SPUN ALUMINUM 0.0635" | 1 |

| ITEM NO. | PART NUMBER | DESCRIPTION | QTY. |
|----------|--|-----------------------|------|
| 1 | BLT-10LED-E1-MN-CFA-48"STM-35K-SPUN DOOR | SPUN ALUMINUM 0.0635" | 1 |



PROPRIETARY AND CONFIDENTIAL
THE INFORMATION CONTAINED IN THIS DRAWING IS THE SOLE PROPERTY OF <INSERT COMPANY NAME HERE>. ANY REPRODUCTION IN PART OR AS A WHOLE WITHOUT THE WRITTEN PERMISSION OF <INSERT COMPANY NAME HERE> IS PROHIBITED.

| | | | | | |
|-------------|---------|--------------------------------------|-----------|------|------|
| | | UNLESS OTHERWISE SPECIFIED: | | NAME | DATE |
| | | DIMENSIONS ARE IN INCHES | DRAWN | | |
| | | TOLERANCES: | CHECKED | | |
| | | FRACTIONAL ± | ENG APPR. | | |
| | | ANGULAR: MACH ± BEND ± | MFG APPR. | | |
| | | TWO PLACE DECIMAL ± | Q.A. | | |
| | | THREE PLACE DECIMAL ± | COMMENTS: | | |
| | | INTERPRET GEOMETRIC TOLERANCING PER: | | | |
| | | MATERIAL | | | |
| | | FINISH | | | |
| NEXT ASSY | USED ON | | | | |
| APPLICATION | | DO NOT SCALE DRAWING | | | |

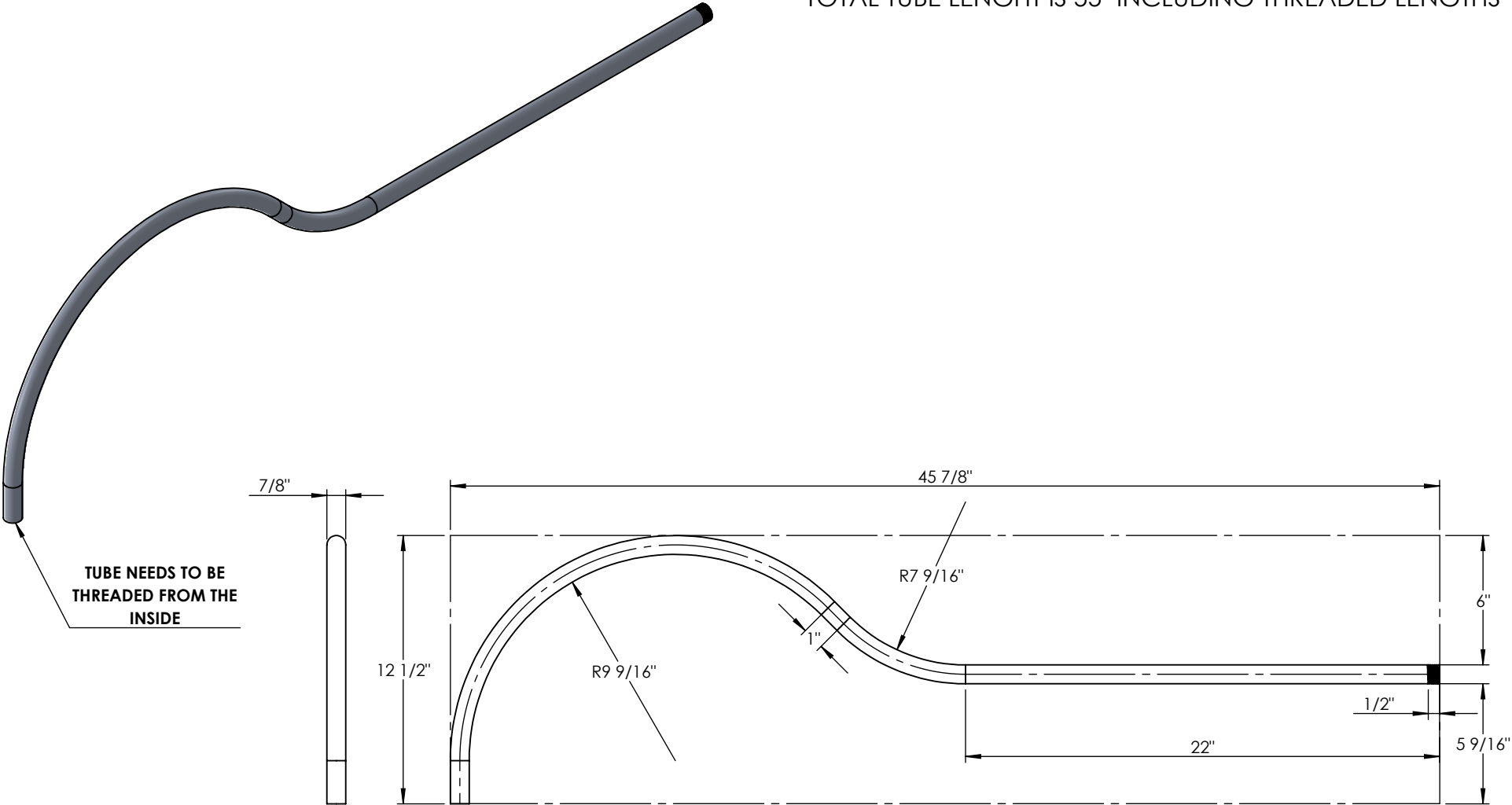
SPUN ALUMINUM 0.0635"

TITLE:
BLT-10LED-E1-MN-CFA-48"STM-35K

SIZE DWG. NO. REV
A

SCALE: 1:2 WEIGHT: SHEET 8 OF 11

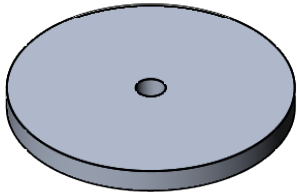
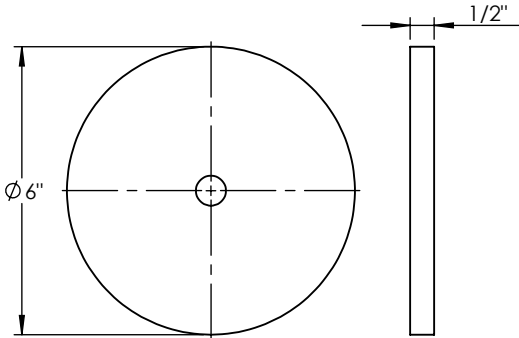
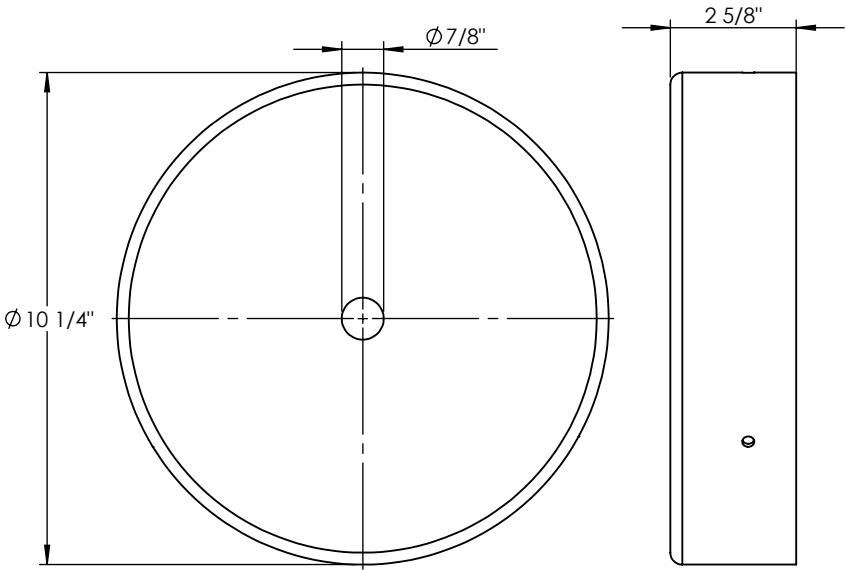
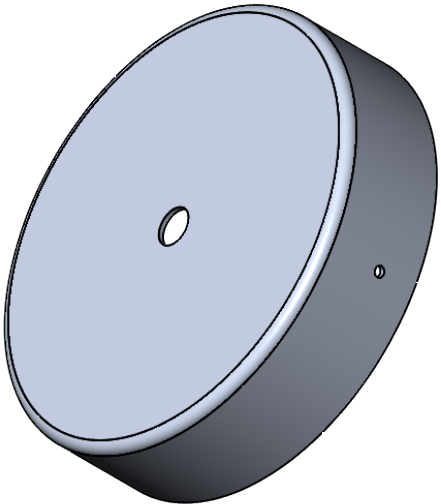
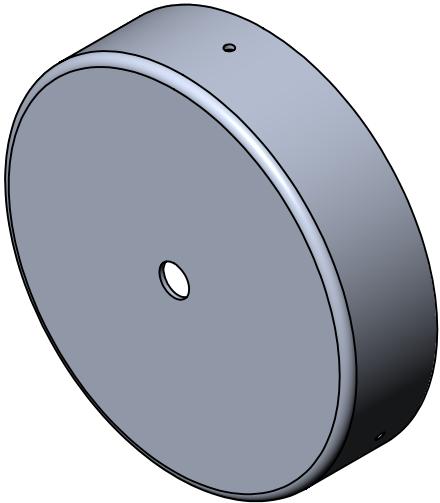
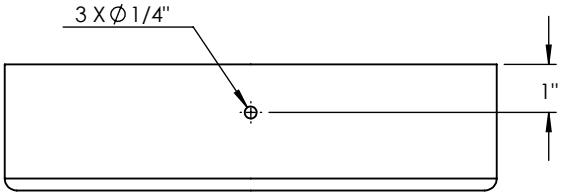
TOTAL TUBE LENGHT IS 55" INCLUDING THREADED LENGTHS



PROPRIETARY AND CONFIDENTIAL
THE INFORMATION CONTAINED IN THIS DRAWING IS THE SOLE PROPERTY OF <INSERT COMPANY NAME HERE>. ANY REPRODUCTION IN PART OR AS A WHOLE WITHOUT THE WRITTEN PERMISSION OF <INSERT COMPANY NAME HERE> IS PROHIBITED.

| | | | | | | | | |
|-------------|---------|--|------------|------|---------|--|--|--|
| | | UNLESS OTHERWISE SPECIFIED: | | NAME | DATE | 7/8" ALUMINUM TUBE | | |
| | | DIMENSIONS ARE IN INCHES TOLERANCES: FRACTIONAL ± ANGULAR: MACH ± BEND ± TWO PLACE DECIMAL ± THREE PLACE DECIMAL ± | DRAWN | | | TITLE: BLT-10LED-E1-MN-CFA-48"STM-35K | | |
| | | | CHECKED | | | | | |
| | | | ENG APPR. | | | | | |
| | | | MFG APPR. | | | | | |
| | | INTERPRET GEOMETRIC TOLERANCING PER: | Q.A. | | | SIZE DWG. NO. REV A | | |
| | | MATERIAL | COMMENTS: | | | | | |
| | | FINISH | | | | | | |
| NEXT ASSY | USED ON | | | | | | | |
| APPLICATION | | DO NOT SCALE DRAWING | | | | | | |
| | | | | | | | | |
| | | | SCALE: 1:7 | | WEIGHT: | | | |

| ITEM NO. | PART NUMBER | DESCRIPTION | QTY. |
|----------|--|----------------------|------|
| 1 | BLT-10LED-E1-MN-CFA-48"STM-35K-SPUN CANOPY | SPUN ALUMINUM 0.125" | 1 |



PROPRIETARY AND CONFIDENTIAL
 THE INFORMATION CONTAINED IN THIS
 DRAWING IS THE SOLE PROPERTY OF
 <INSERT COMPANY NAME HERE>. ANY
 REPRODUCTION IN PART OR AS A WHOLE
 WITHOUT THE WRITTEN PERMISSION OF
 <INSERT COMPANY NAME HERE> IS
 PROHIBITED.

| | | | | | |
|-------------|---------|--------------------------------------|-----------|------|------|
| | | UNLESS OTHERWISE SPECIFIED: | | NAME | DATE |
| | | DIMENSIONS ARE IN INCHES | DRAWN | | |
| | | TOLERANCES: | CHECKED | | |
| | | FRACTIONAL ± | ENG APPR. | | |
| | | ANGULAR: MACH ± BEND ± | MFG APPR. | | |
| | | TWO PLACE DECIMAL ± | | | |
| | | THREE PLACE DECIMAL ± | | | |
| | | INTERPRET GEOMETRIC TOLERANCING PER: | Q.A. | | |
| | | MATERIAL | COMMENTS: | | |
| | | FINISH | | | |
| NEXT ASSY | USED ON | | | | |
| APPLICATION | | DO NOT SCALE DRAWING | | | |

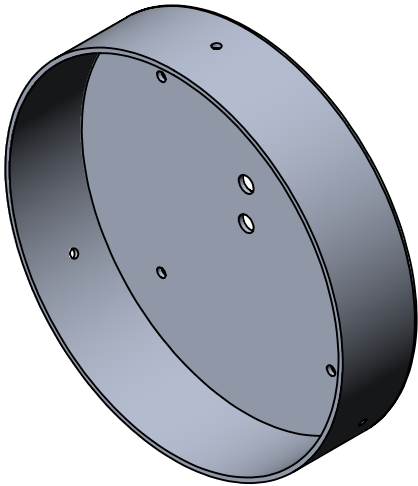
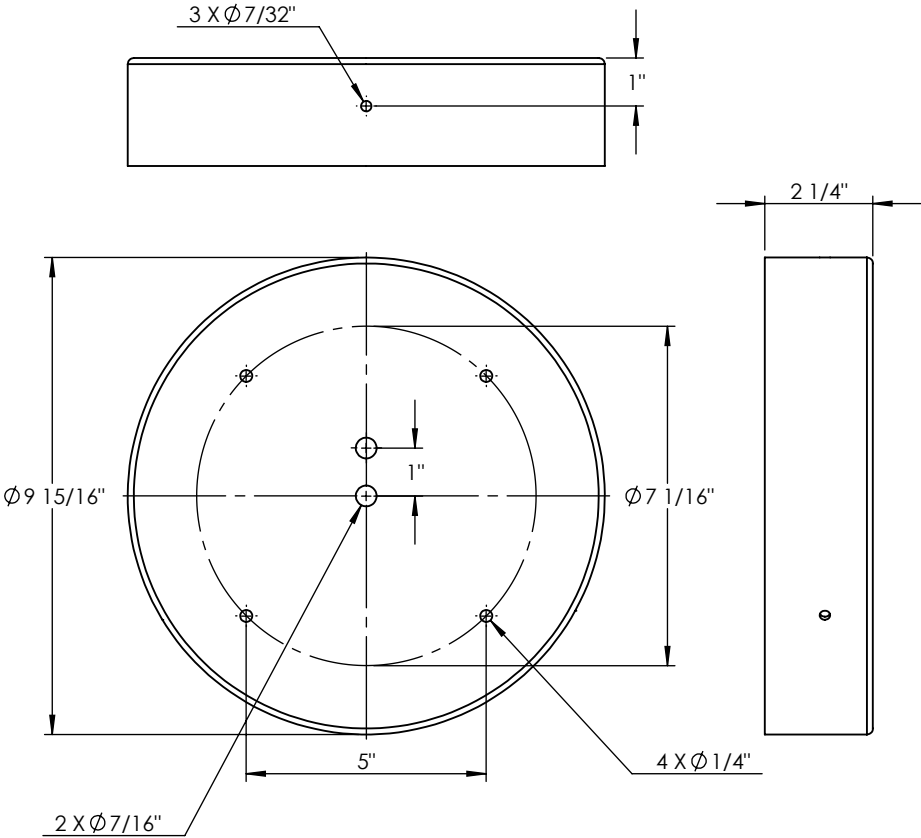
SPUN ALUMINUM 0.125"

TITLE:
 BLT-10LED-E1-MN-CFA-48"STM-35K

| | | |
|----------|----------|-----|
| SIZE | DWG. NO. | REV |
| A | | |

| | | |
|------------|---------|----------------|
| SCALE: 1:4 | WEIGHT: | SHEET 10 OF 11 |
|------------|---------|----------------|

| ITEM NO. | PART NUMBER | DESCRIPTION | QTY. |
|----------|---|----------------------|------|
| 1 | DS16"-BK-E13-12W-EMR700-30K-SPUN CANOPY | SPUN ALUMINUM 0.125" | 1 |



| | | | | | | | | | |
|---|---------|----------------------|--------------------------------------|-----------|------|--|--|--|--|
| <div>PROPRIETARY AND CONFIDENTIAL</div> <div>THE INFORMATION CONTAINED IN THIS DRAWING IS THE SOLE PROPERTY OF <INSERT COMPANY NAME HERE>. ANY REPRODUCTION IN PART OR AS A WHOLE WITHOUT THE WRITTEN PERMISSION OF <INSERT COMPANY NAME HERE> IS PROHIBITED.</div> | | | UNLESS OTHERWISE SPECIFIED: | | NAME | DATE | SPUN ALUMINUM 0.125" | | |
| | | | DIMENSIONS ARE IN INCHES | DRAWN | | | TITLE: BLT-10LED-E1-MN-CFA-48"STM-35K | | |
| | | | TOLERANCES: | CHECKED | | | | | |
| | | | FRACTIONAL ± | ENG APPR. | | | | | |
| | | | ANGULAR: MACH ± BEND ± | MFG APPR. | | | | | |
| | | | TWO PLACE DECIMAL ± | | | | | | |
| | | | THREE PLACE DECIMAL ± | | | | | | |
| | | | INTERPRET GEOMETRIC TOLERANCING PER: | Q.A. | | | SIZE DWG. NO. REV | | |
| | | MATERIAL | COMMENTS: | | | | | | |
| NEXT ASSY | USED ON | FINISH | | | | A SCALE: 1:4 WEIGHT: SHEET 11 OF 11 | | | |
| APPLICATION | | DO NOT SCALE DRAWING | | | | | | | |
| 5 | 4 | 3 | 2 | 1 | | | | | |