

UNLESS OTHERWISE SPECIFIED:
 DIMENSIONS ARE IN INCHES
 TOLERANCES:
 FRACTIONAL ± .003
 ANGULAR: MACH ± .01 BEND ±
 TWO PLACE DECIMAL ±
 THREE PLACE DECIMAL ±.001

INTERPRET GEOMETRIC
 TOLERANCING PER:
 MATERIAL
 FINISH

APPLICATION DO NOT SCALE DRAWING

	NAME	DATE
DRAWN		
CHECKED		
ENG APPR.		
MFG APPR.		
Q.A.		
COMMENTS:		

TITLE: BAY-P6-12'-120LED-AB-WF-41K		
SIZE	DWG. NO.	REV
A	TICKET 26137	
SCALE: 1:14	WEIGHT:	SHEET 1 OF 14

EVERGREEN LIGHTING



5

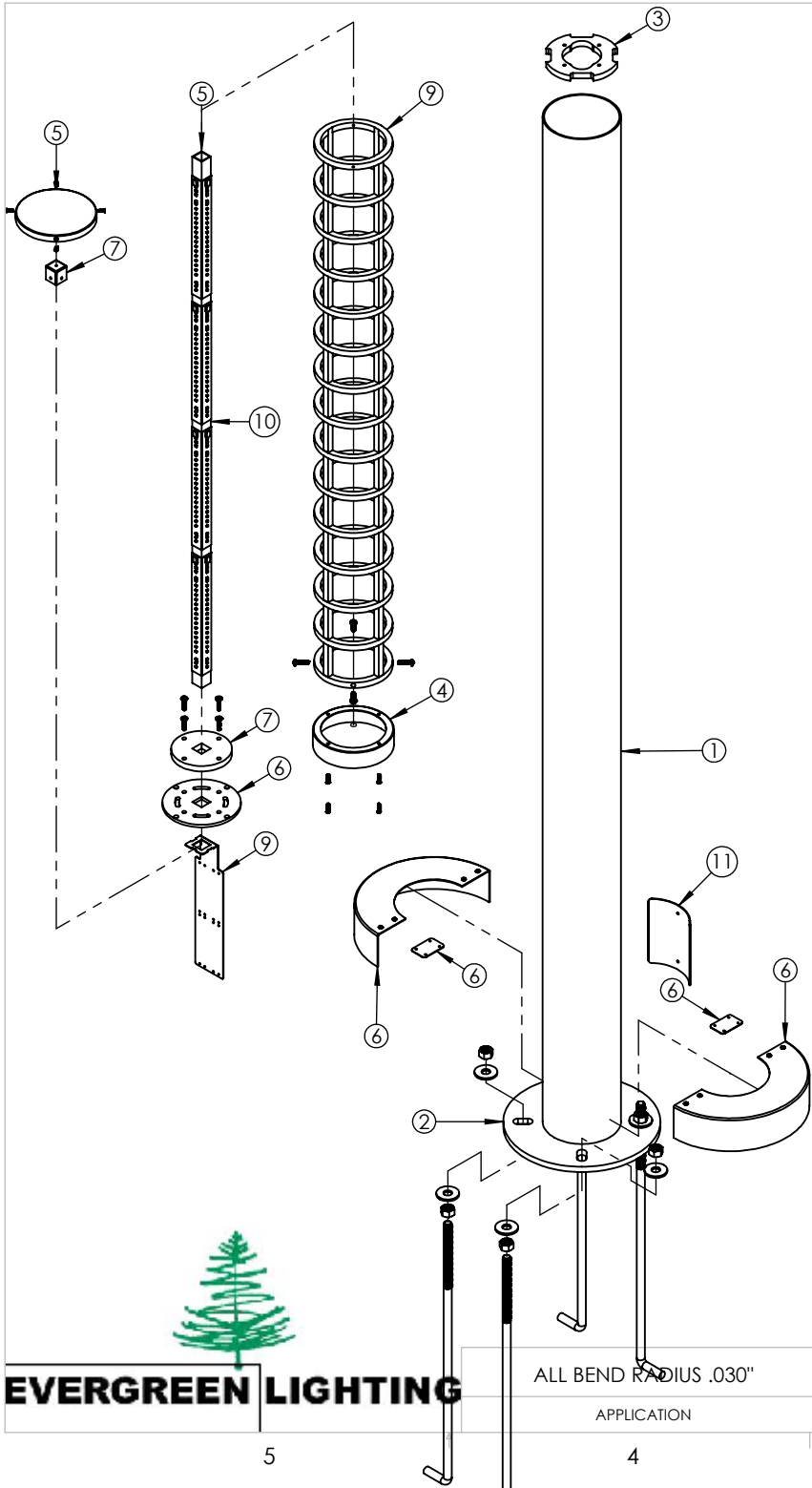
4

3

2

1

ALL BEND RADIUS .030"



ITEM NO.	PART NUMBER	DESCRIPTION	QTY.	CUT
1	BAY-P6-12'-120LED-AB-WF-41K-6" CYLINDER BODY	6" CYLINDER	1	
2	BAY-P6-12'-120LED-AB-WF-41K-BASE ANCHOR PLATE	ALUMINUM 0.500" PLATE	1	
3	BAY-P6-12'-120LED-AB-WF-41K-TUBE FLANGE	ALUMINUM 0.500" PLATE	1	
4	BAY-P6-12'-120LED-AB-WF-41K-SUPPORT PLATE	ALUMINUM 0.500" PLATE	1	
5	BAY-P6-12'-120LED-AB-WF-41K-BRACKET PLATE	ALUMINUM 0.250" PLATE	1	
6	BAY-P6-12'-120LED-AB-WF-41K-SPUN ANCHOR COVER	SPUN ALUMINUM 0.080"	2	
7	BAY-P6-12'-120LED-AB-WF-41K-SPUN CAP FITTER	SPUN ALUMINUM 0.080"	1	
8	BAY-P6-12'-120LED-AB-WF-41K-SPUN CAPS	SPUN ALUMINUM 0.080"	1	
9	BAY-P6-12'-120LED-AB-WF-41K-FLAT BRACKET	ALUMINUM 0.0635"	2	
10	BAY-P6-12'-120LED-AB-WF-41K-TUBE BRACKET	ALUMINUM 0.0635"	1	
11	BAY-P6-12'-120LED-AB-WF-41K-HAND COVER	ALUMINUM 0.0635"	1	
12	BAY-P6-12'-120LED-AB-WF-41K-DRIVER BRACKET	ALUMINUM 0.0635"	1	
13	BAY-P6-12'-120LED-AB-WF-41K-ALUMINUM BAR	1/2" SQUARE ALUMINUM BAR	1	
14	BAY-P6-12'-120LED-AB-WF-41K-SQUARE TUBE	1" SQUARE ALUMINUM TUBE	1	
15	BAY-P6-12'-120LED-AB-WF-41K-ACRYLIC	ACRYLIC	1	
16	ESPEN VEL29070MVH-1	DRIVER	4	
17	Altiled PN107B-2.5-SMD-SS	LED	16	



ALL BEND RADIUS .030"

UNLESS OTHERWISE SPECIFIED:
 DIMENSIONS ARE IN INCHES
 TOLERANCES:
 FRACTIONAL ± .003
 ANGULAR: MACH ± .01 BEND ±
 TWO PLACE DECIMAL ±
 THREE PLACE DECIMAL ±.001
 INTERPRET GEOMETRIC
 TOLERANCING PER:
 MATERIAL
 FINISH
 APPLICATION
 DO NOT SCALE DRAWING

NAME	DATE
DRAWN	
CHECKED	
ENG APPR.	
MFG APPR.	
Q.A.	
COMMENTS:	

TITLE: BAY-P6-12'-120LED-AB-WF-41K		
SIZE	DWG. NO.	REV
A	TICKET 26137	
SCALE: 1:14	WEIGHT:	SHEET 2 OF 14

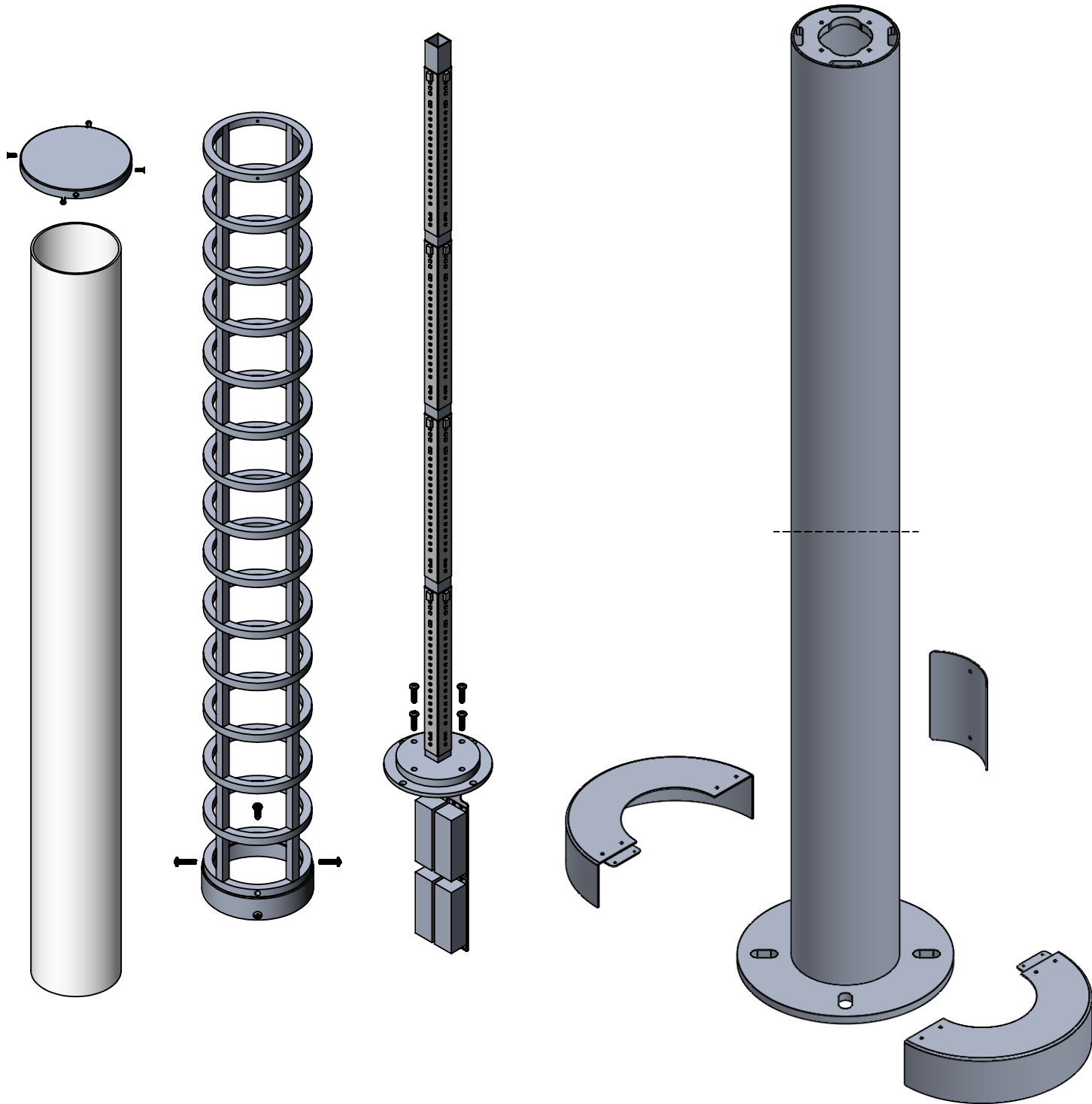
5

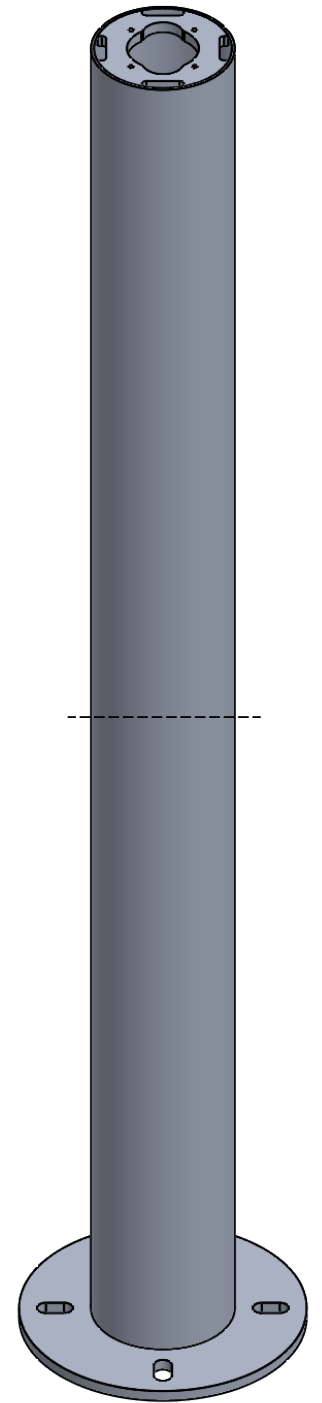
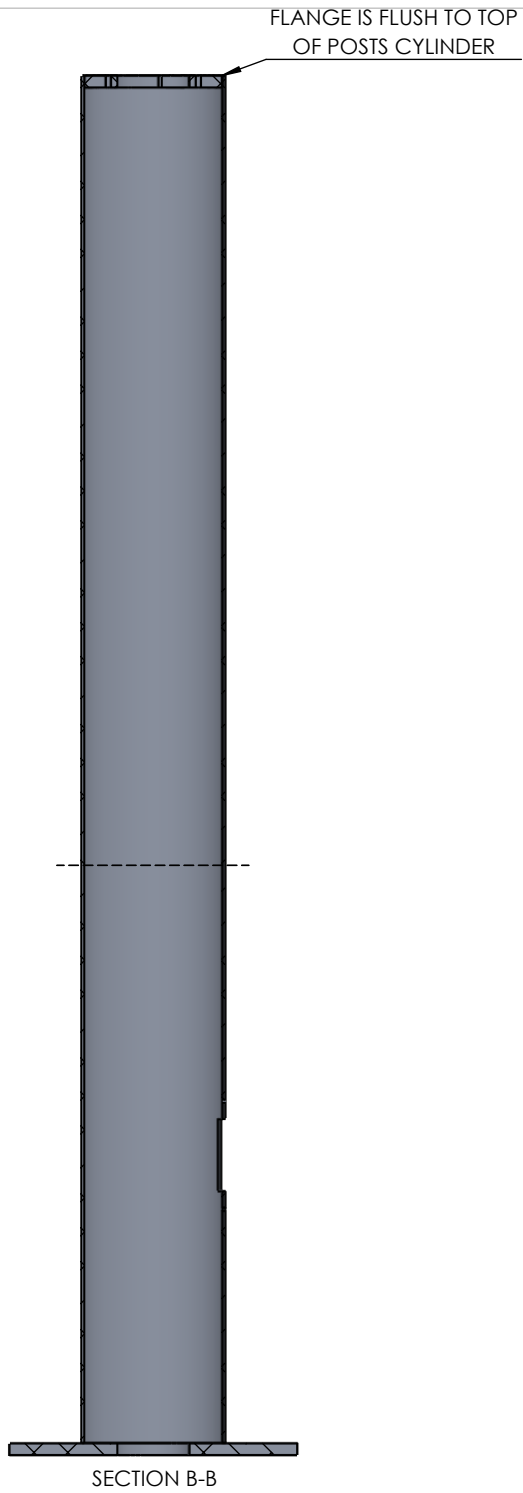
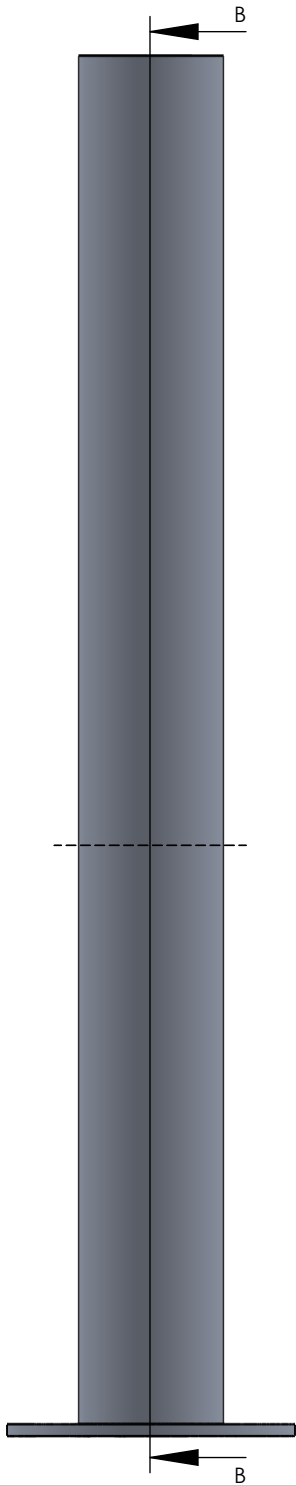
4

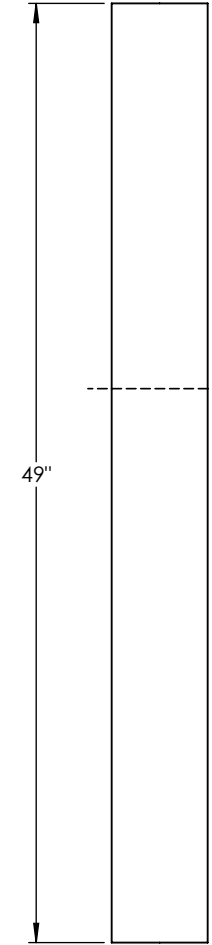
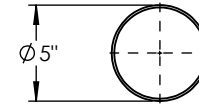
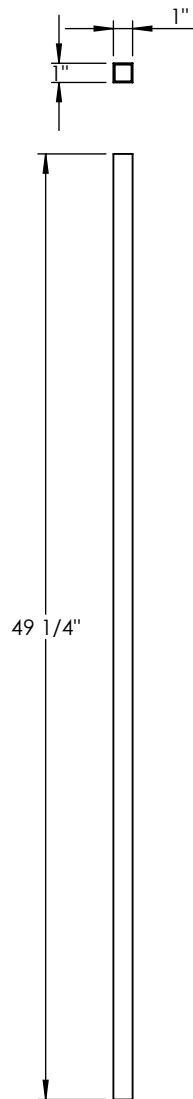
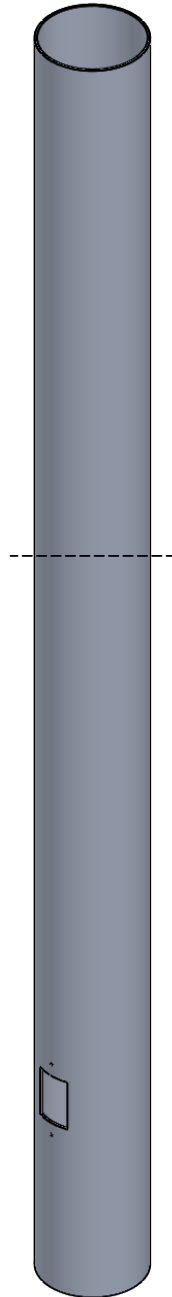
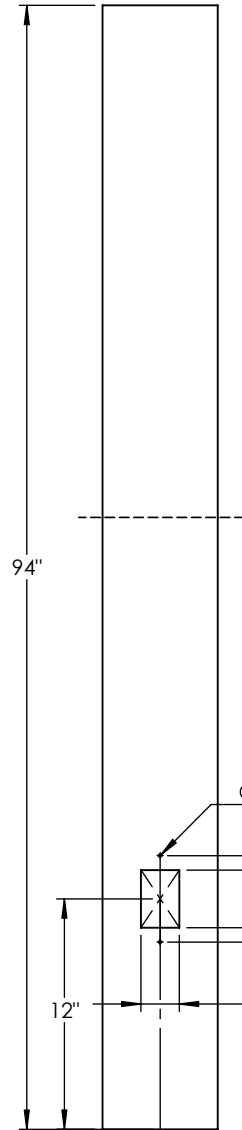
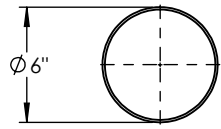
3

2

1







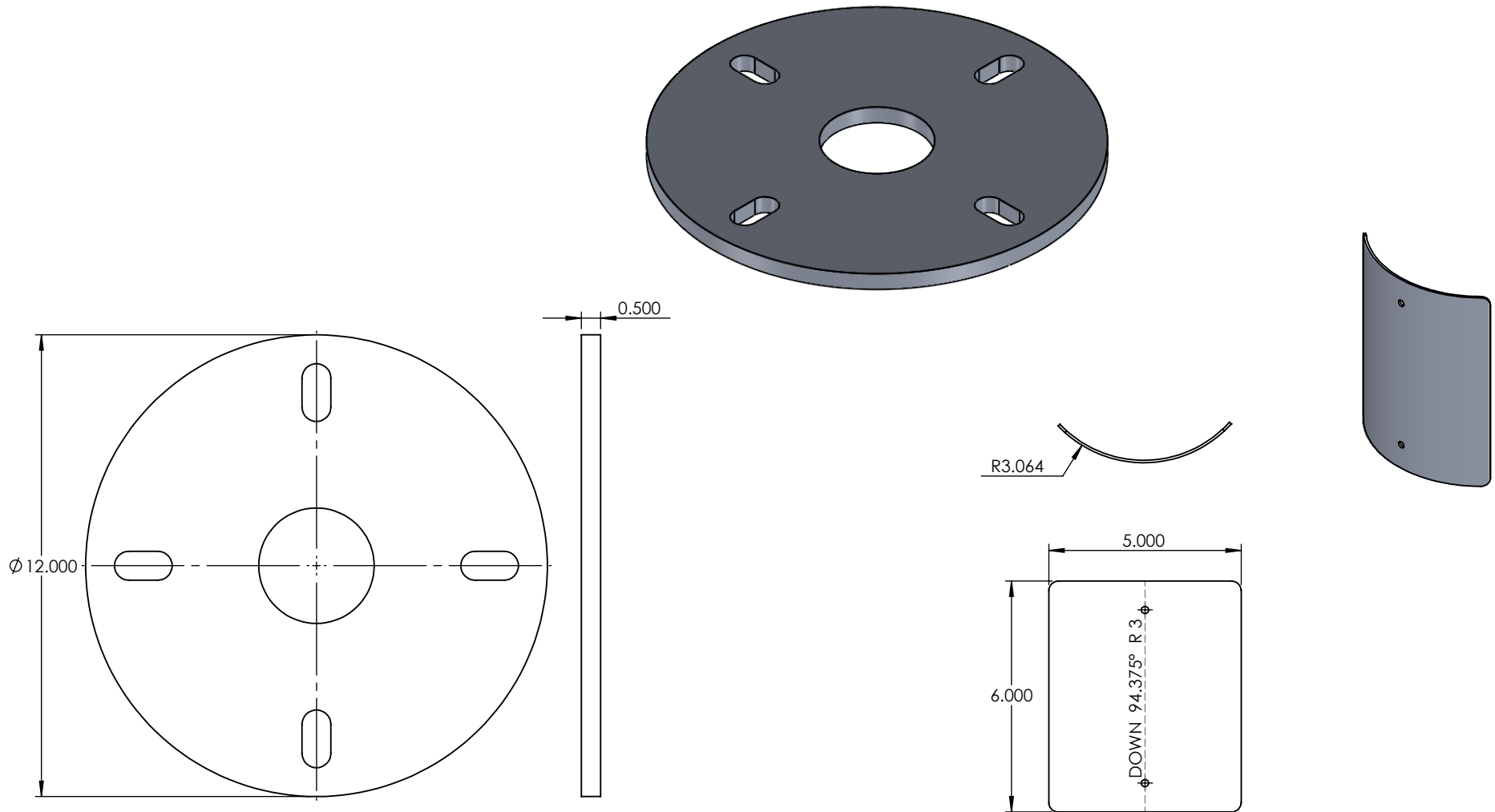
PROPRIETARY AND CONFIDENTIAL
 THE INFORMATION CONTAINED IN THIS DRAWING IS THE SOLE PROPERTY OF <INSERT COMPANY NAME HERE>. ANY REPRODUCTION IN PART OR AS A WHOLE WITHOUT THE WRITTEN PERMISSION OF <INSERT COMPANY NAME HERE> IS PROHIBITED.

NEXT ASSY	USED ON
APPLICATION	

UNLESS OTHERWISE SPECIFIED:
DIMENSIONS ARE IN INCHES
TOLERANCES:
FRACTIONAL ±
ANGULAR: MACH ± BEND ±
TWO PLACE DECIMAL ±
THREE PLACE DECIMAL ±
INTERPRET GEOMETRIC TOLERANCING PER:
MATERIAL
FINISH
DO NOT SCALE DRAWING

NAME	DATE
DRAWN	
CHECKED	
ENG APPR.	
MFG APPR.	
Q.A.	
COMMENTS:	

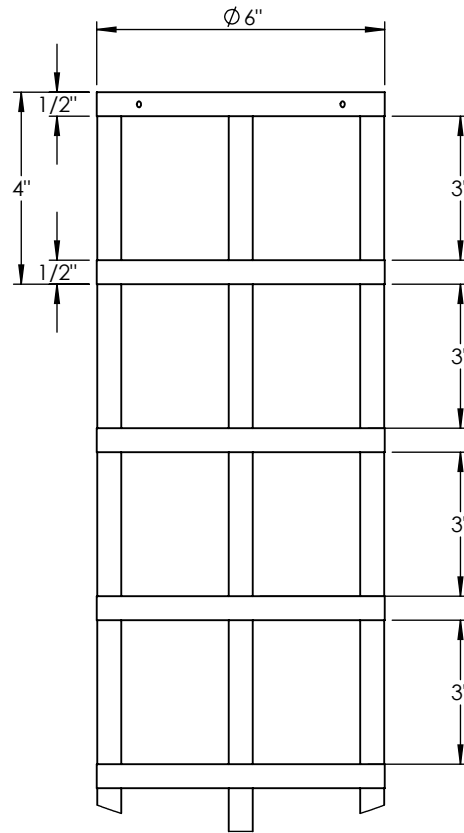
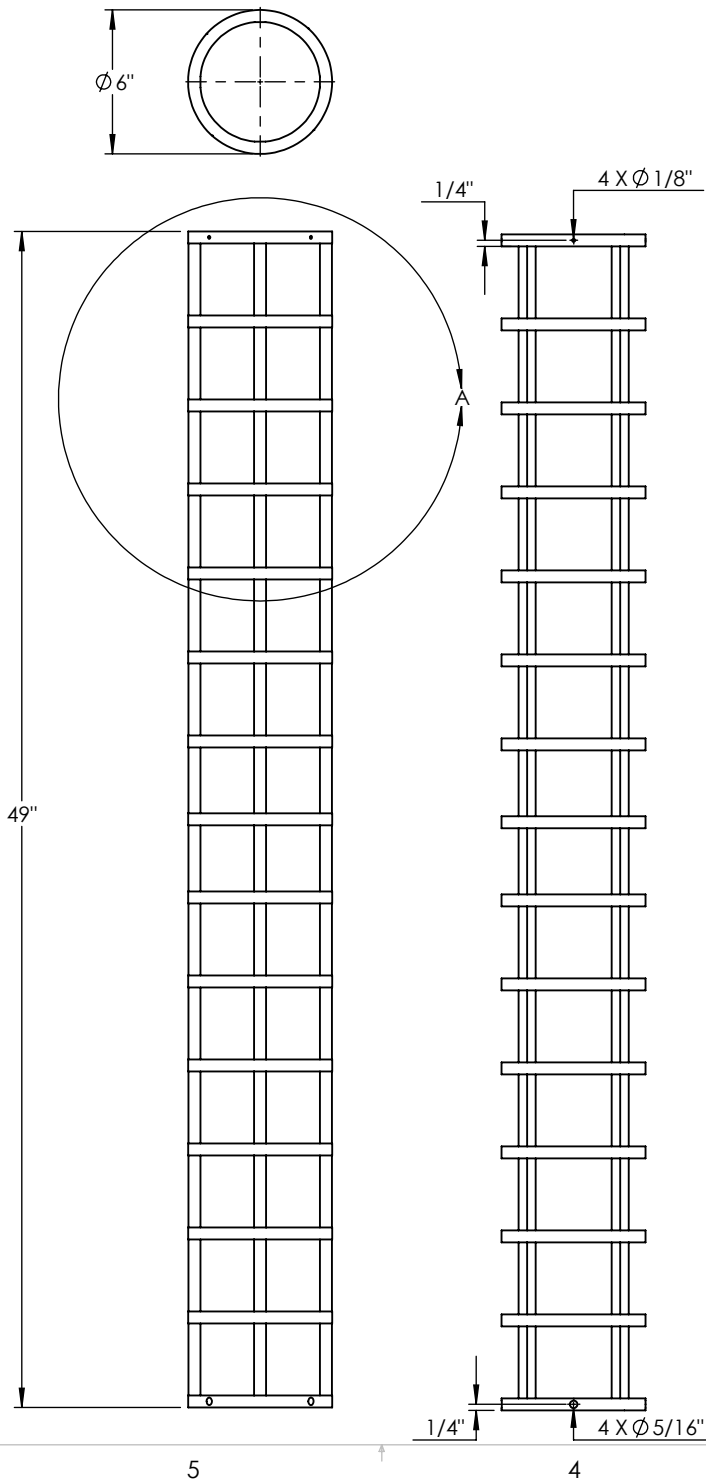
6" CYLINDER		
TITLE:		
BAY-P6-12'-120LED-AB-WF-41K		
SIZE	DWG. NO.	REV
A		
SCALE: 1:10	WEIGHT:	SHEET 5 OF 14



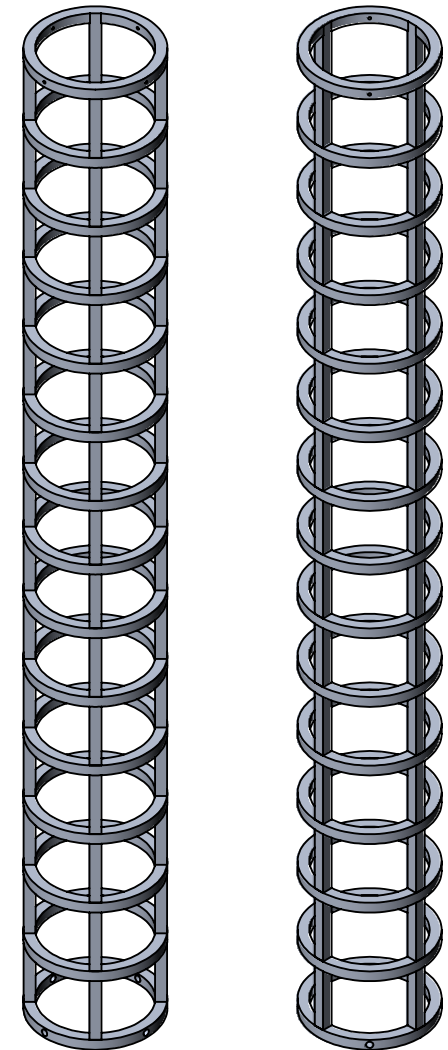
PROPRIETARY AND CONFIDENTIAL
 THE INFORMATION CONTAINED IN THIS DRAWING IS THE SOLE PROPERTY OF <INSERT COMPANY NAME HERE>. ANY REPRODUCTION IN PART OR AS A WHOLE WITHOUT THE WRITTEN PERMISSION OF <INSERT COMPANY NAME HERE> IS PROHIBITED.

		UNLESS OTHERWISE SPECIFIED:	NAME	DATE
		DIMENSIONS ARE IN INCHES	DRAWN	
		TOLERANCES:	CHECKED	
		FRACTIONAL ±	ENG APPR.	
		ANGULAR: MACH ± BEND ±	MFG APPR.	
		TWO PLACE DECIMAL ±	Q.A.	
		THREE PLACE DECIMAL ±	COMMENTS:	
		INTERPRET GEOMETRIC TOLERANCING PER:		
		MATERIAL		
		FINISH		
NEXT ASSY	USED ON			
APPLICATION	DO NOT SCALE DRAWING			

ALUMINUM 0.500" PLATE		
TITLE:		
BAY-P6-12'-120LED-AB-WF-41K		
SIZE	DWG. NO.	REV
A		
SCALE: 1:4	WEIGHT:	SHEET 6 OF 14



DETAIL A
SCALE 1 : 4



UNLESS OTHERWISE SPECIFIED:		NAME	DATE	1/2" SQUARE ALUMINUM BAR
DIMENSIONS ARE IN INCHES		DRAWN		
TOLERANCES:		CHECKED		BAY-P6-12'-120LED-AB-WF-41K
FRACTIONAL ±		ENG APPR.		
ANGULAR: MACH ± BEND ±		MFG APPR.		
TWO PLACE DECIMAL ±		Q.A.		SIZE DWG. NO. REV
THREE PLACE DECIMAL ±		COMMENTS:		A
INTERPRET GEOMETRIC TOLERANCING PER:				SCALE: 1:8 WEIGHT: SHEET 7 OF 14
MATERIAL				
FINISH				
DO NOT SCALE DRAWING				

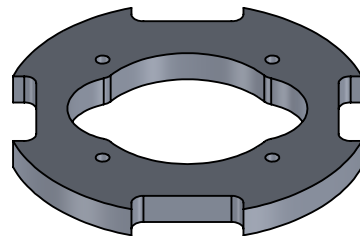
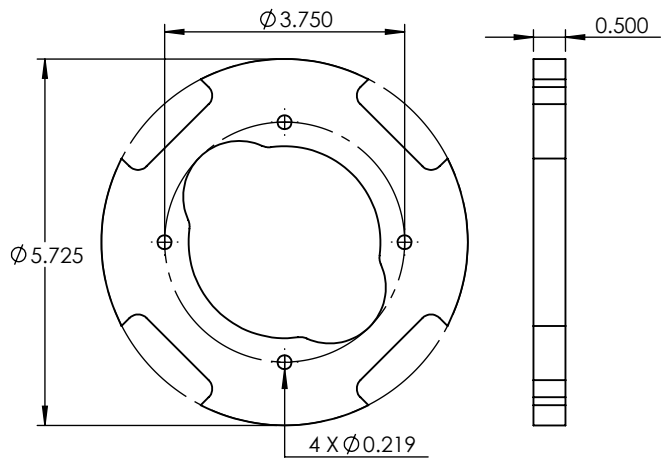
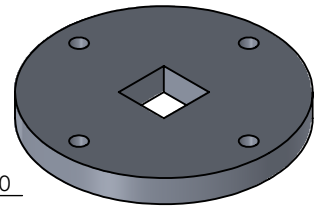
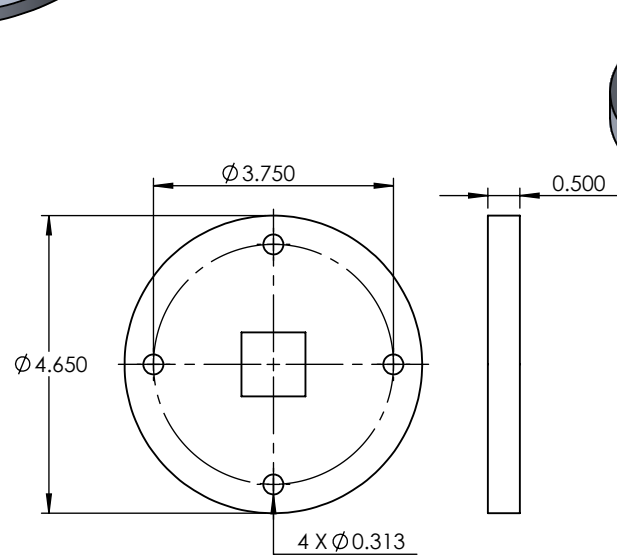
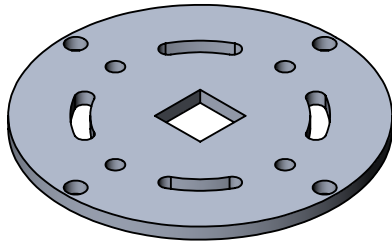
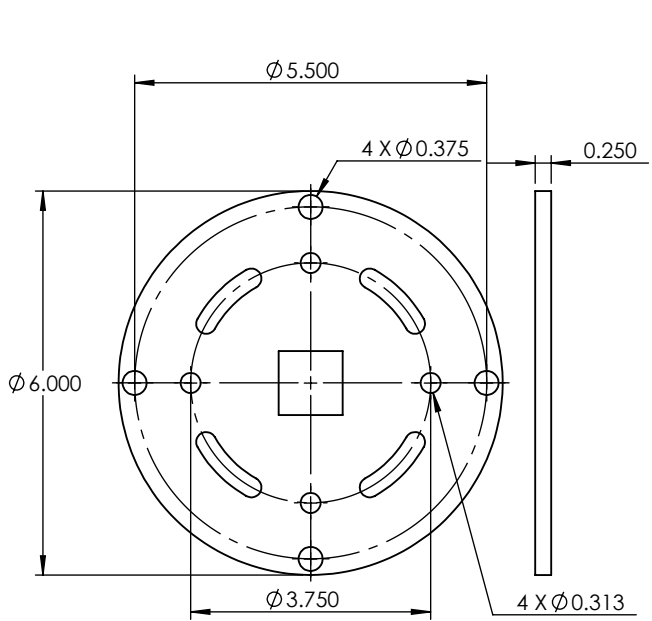
5

4

3

2

1



UNLESS OTHERWISE SPECIFIED:

DIMENSIONS ARE IN INCHES
 TOLERANCES:
 FRACTIONAL ±
 ANGULAR: MACH ± BEND ±
 TWO PLACE DECIMAL ±
 THREE PLACE DECIMAL ±

INTERPRET GEOMETRIC TOLERANCING PER:

MATERIAL

FINISH

DO NOT SCALE DRAWING

NAME DATE

DRAWN		
CHECKED		
ENG APPR.		
MFG APPR.		
Q.A.		
COMMENTS:		

ALUMINUM 0.250" PLATE

TITLE:

BAY-P6-12'-120LED-AB-WF-41K

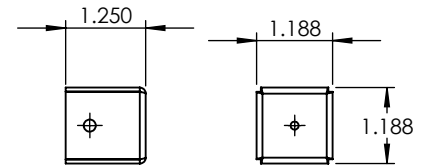
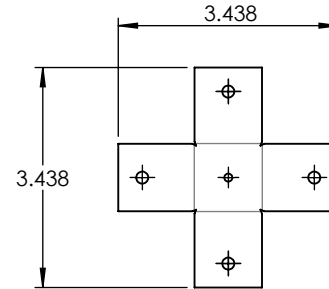
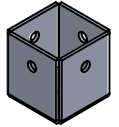
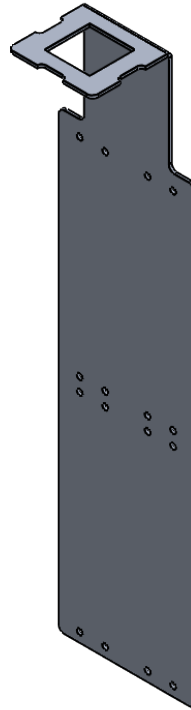
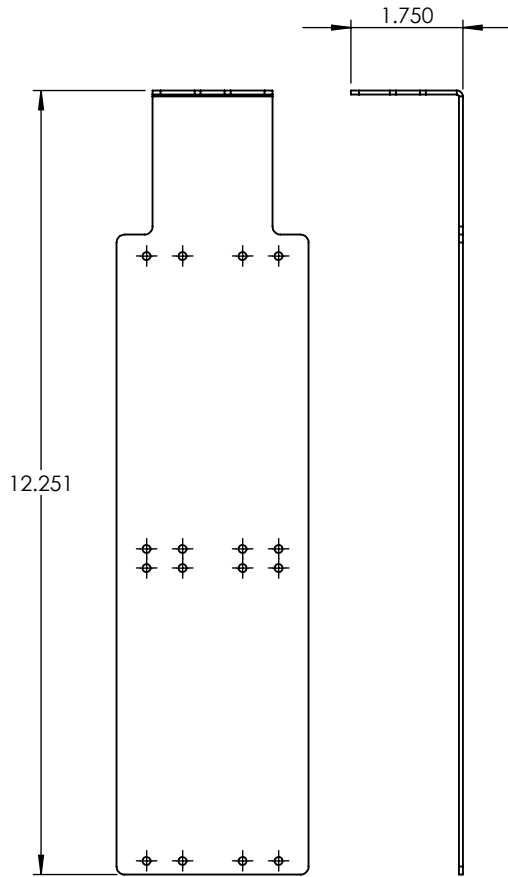
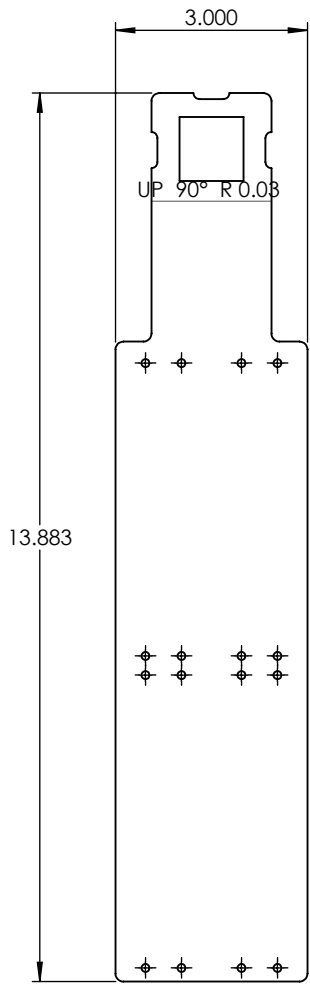
SIZE DWG. NO. REV

A

SCALE: 1:3 WEIGHT: SHEET 8 OF 14

PROPRIETARY AND CONFIDENTIAL
 THE INFORMATION CONTAINED IN THIS DRAWING IS THE SOLE PROPERTY OF <INSERT COMPANY NAME HERE>. ANY REPRODUCTION IN PART OR AS A WHOLE WITHOUT THE WRITTEN PERMISSION OF <INSERT COMPANY NAME HERE> IS PROHIBITED.

NEXT ASSY	USED ON
APPLICATION	



PROPRIETARY AND CONFIDENTIAL
 THE INFORMATION CONTAINED IN THIS DRAWING IS THE SOLE PROPERTY OF <INSERT COMPANY NAME HERE>. ANY REPRODUCTION IN PART OR AS A WHOLE WITHOUT THE WRITTEN PERMISSION OF <INSERT COMPANY NAME HERE> IS PROHIBITED.

		UNLESS OTHERWISE SPECIFIED:	NAME	DATE
		DIMENSIONS ARE IN INCHES	DRAWN	
		TOLERANCES:	CHECKED	
		FRACTIONAL ±	ENG APPR.	
		ANGULAR: MACH ± BEND ±	MFG APPR.	
		TWO PLACE DECIMAL ±	Q.A.	
		THREE PLACE DECIMAL ±	COMMENTS:	
		INTERPRET GEOMETRIC TOLERANCING PER:		
		MATERIAL		
NEXT ASSY	USED ON	FINISH		
APPLICATION		DO NOT SCALE DRAWING		

ALUMINUM 0.0635"		
TITLE:		
BAY-P6-12'-120LED-AB-WF-41K		
SIZE	DWG. NO.	REV
A		
SCALE: 1:3	WEIGHT:	SHEET 9 OF 14

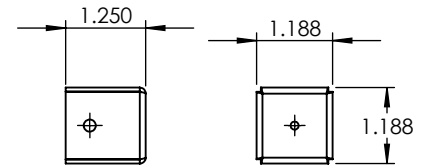
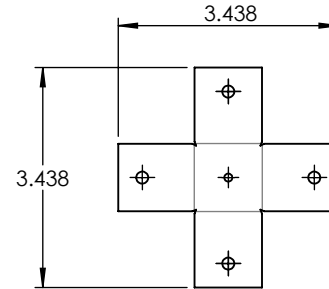
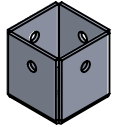
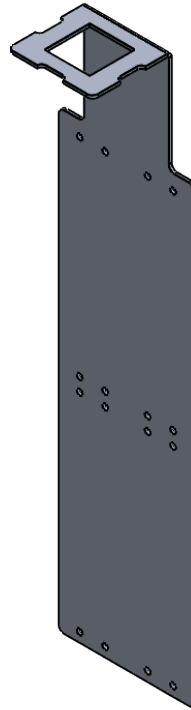
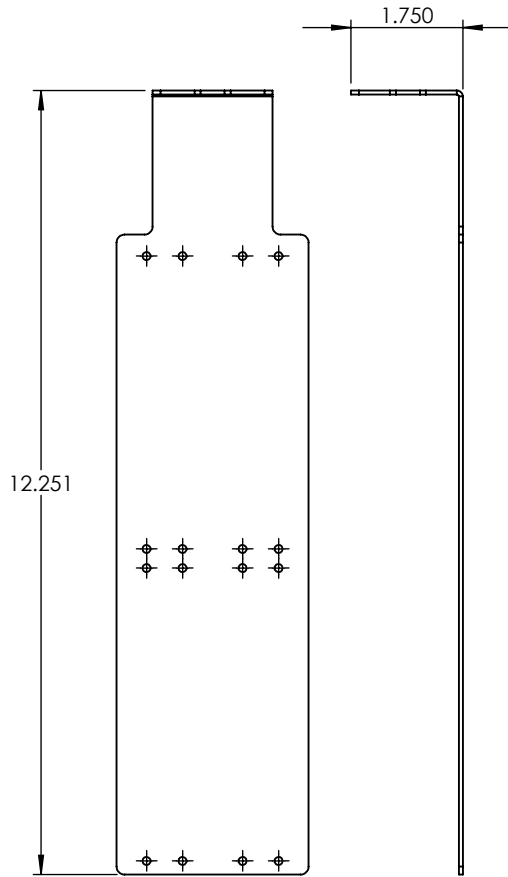
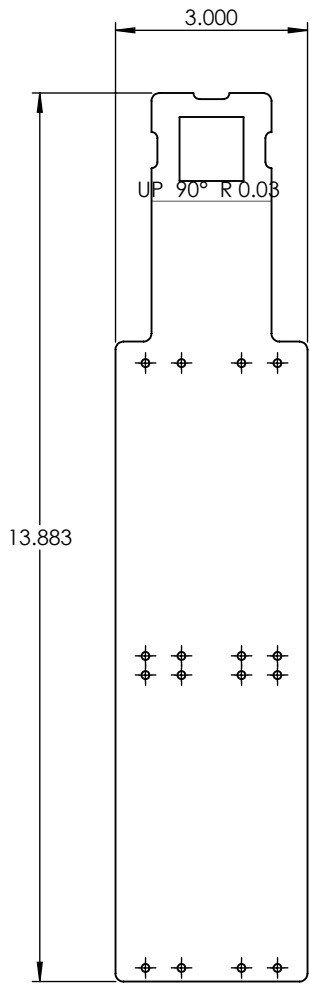
5

4

3

2

1



PROPRIETARY AND CONFIDENTIAL
 THE INFORMATION CONTAINED IN THIS DRAWING IS THE SOLE PROPERTY OF <INSERT COMPANY NAME HERE>. ANY REPRODUCTION IN PART OR AS A WHOLE WITHOUT THE WRITTEN PERMISSION OF <INSERT COMPANY NAME HERE> IS PROHIBITED.

		UNLESS OTHERWISE SPECIFIED:	NAME	DATE
		DIMENSIONS ARE IN INCHES	DRAWN	
		TOLERANCES:	CHECKED	
		FRACTIONAL ±	ENG APPR.	
		ANGULAR: MACH ± BEND ±	MFG APPR.	
		TWO PLACE DECIMAL ±	Q.A.	
		THREE PLACE DECIMAL ±	COMMENTS:	
		INTERPRET GEOMETRIC TOLERANCING PER:		
		MATERIAL		
NEXT ASSY	USED ON	FINISH		
APPLICATION		DO NOT SCALE DRAWING		

ALUMINUM 0.0635"		
TITLE:		
BAY-P6-12'-120LED-AB-WF-41K		
SIZE	DWG. NO.	REV
A		
SCALE: 1:3	WEIGHT:	SHEET 10 OF 14

5

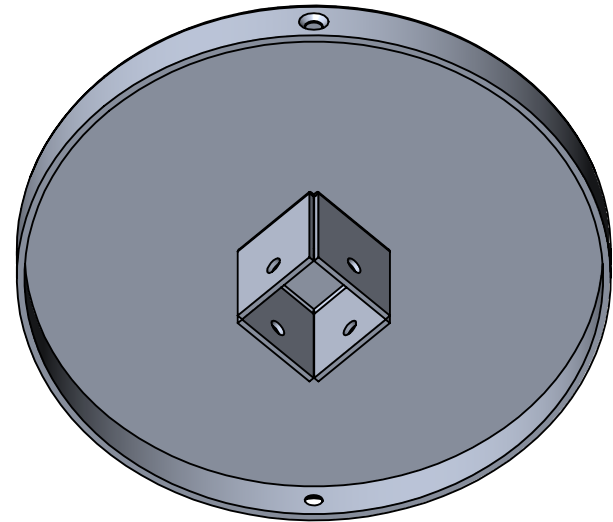
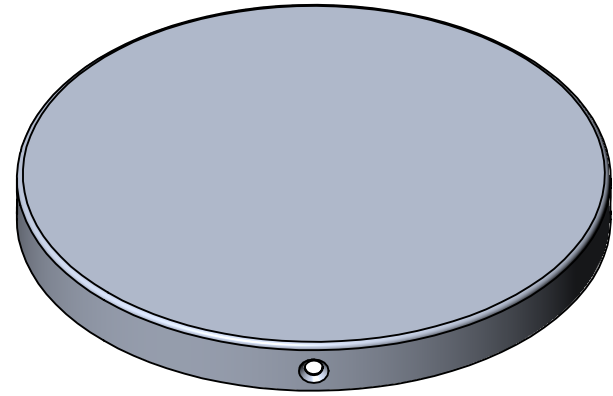
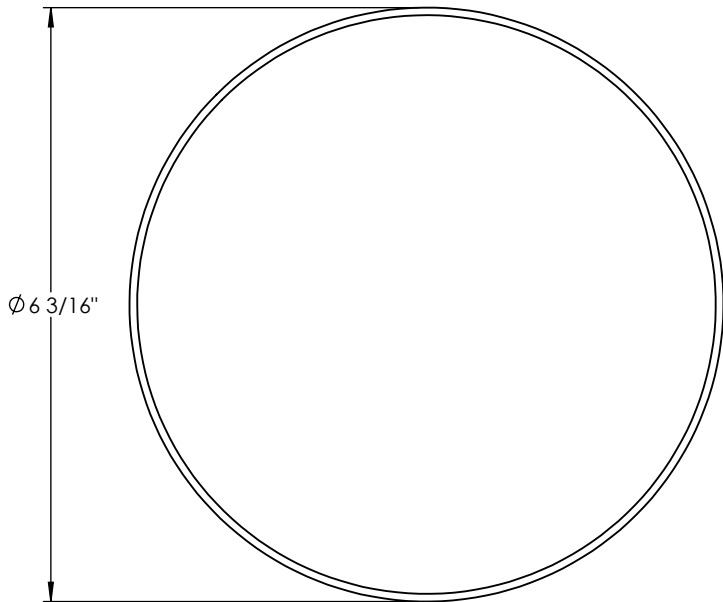
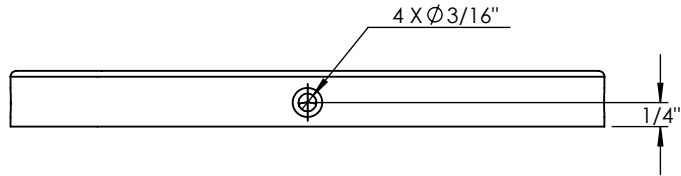
4

3

2

1

ITEM NO.	PART NUMBER	DESCRIPTION	QTY.
1	BAY-P6-12'-120LED-AB-WF-41K-SPUN CAPS	SPUN ALUMINUM 0.080"	1



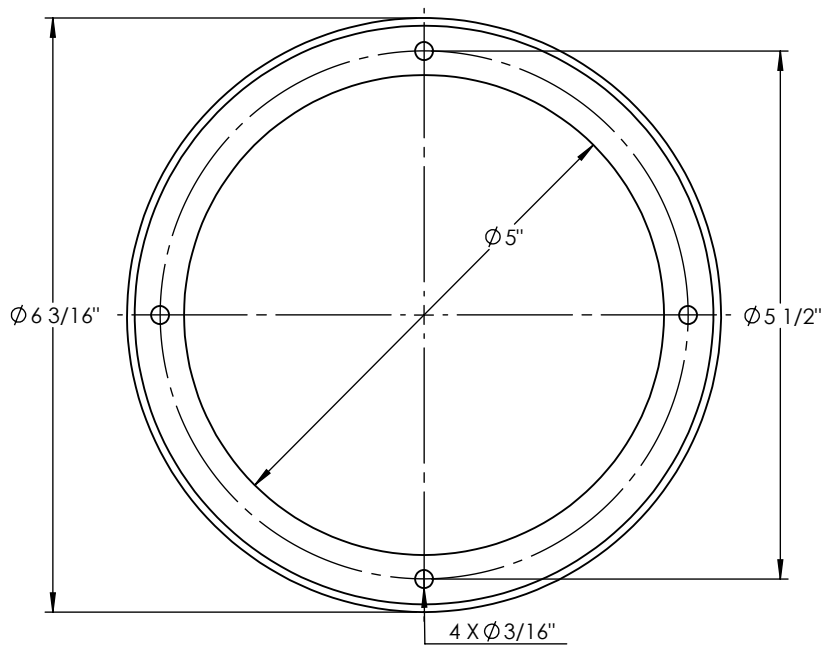
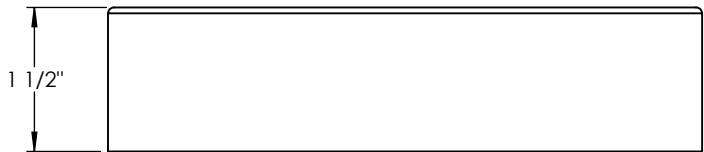
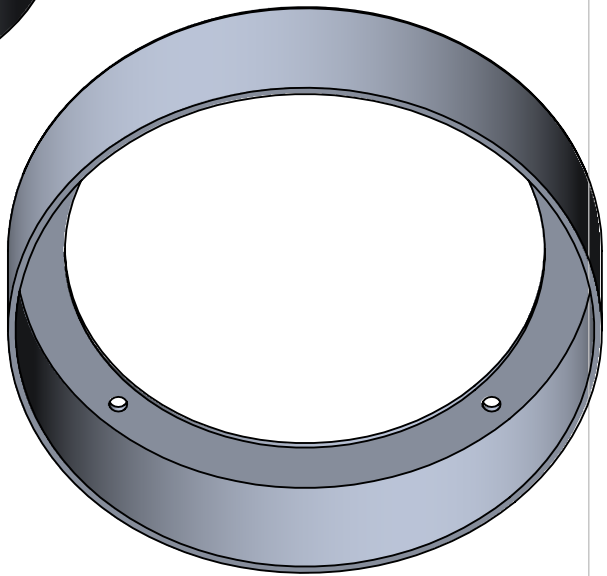
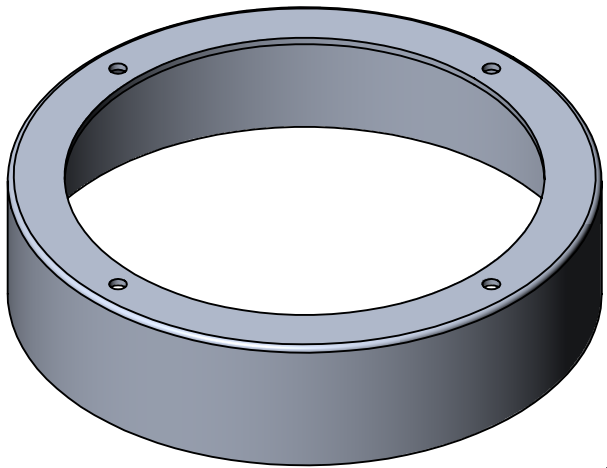
SHOWN WITH TUBE BRACKET WELDED IN PLACE

PROPRIETARY AND CONFIDENTIAL
 THE INFORMATION CONTAINED IN THIS DRAWING IS THE SOLE PROPERTY OF <INSERT COMPANY NAME HERE>. ANY REPRODUCTION IN PART OR AS A WHOLE WITHOUT THE WRITTEN PERMISSION OF <INSERT COMPANY NAME HERE> IS PROHIBITED.

		UNLESS OTHERWISE SPECIFIED:	NAME	DATE
		DIMENSIONS ARE IN INCHES TOLERANCES: FRACTIONAL ± ANGULAR: MACH ± BEND ± TWO PLACE DECIMAL ± THREE PLACE DECIMAL ±	DRAWN	
		INTERPRET GEOMETRIC TOLERANCING PER:	CHECKED	
		MATERIAL	ENG APPR.	
		FINISH	MFG APPR.	
			Q.A.	
			COMMENTS:	
NEXT ASSY	USED ON			
APPLICATION		DO NOT SCALE DRAWING		

SPUN ALUMINUM 0.080"		
TITLE:		
BAY-P6-12'-120LED-AB-WF-41K		
SIZE	DWG. NO.	REV
A		
SCALE: 1:2	WEIGHT:	SHEET 11 OF 14

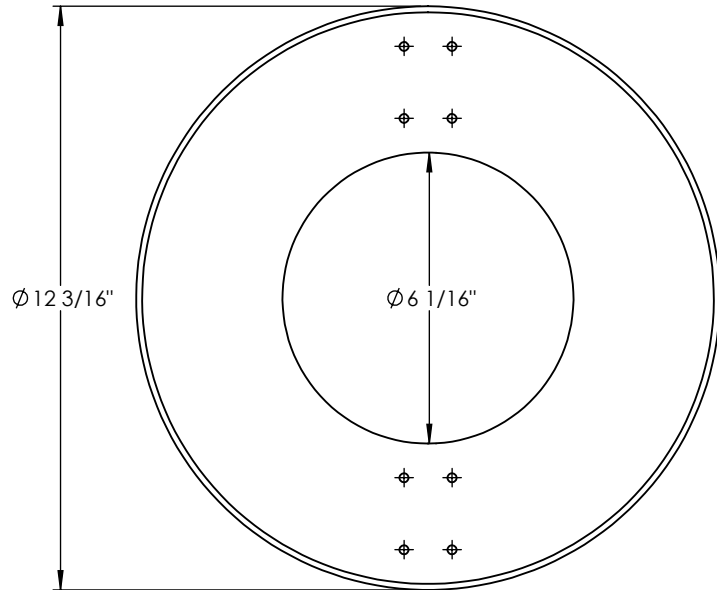
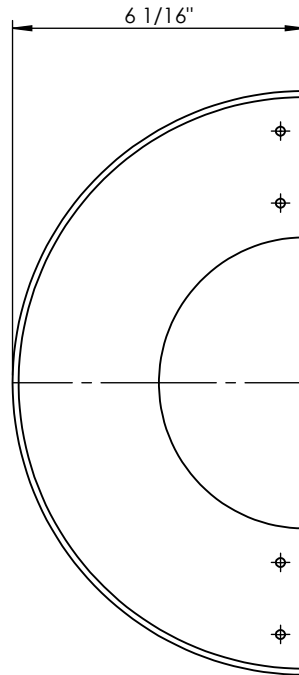
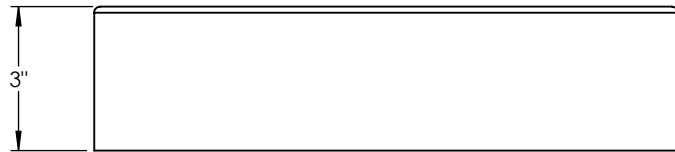
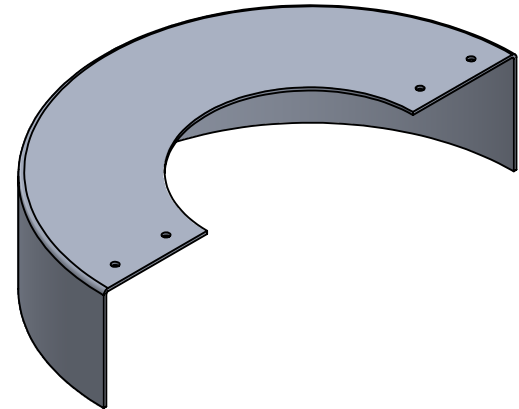
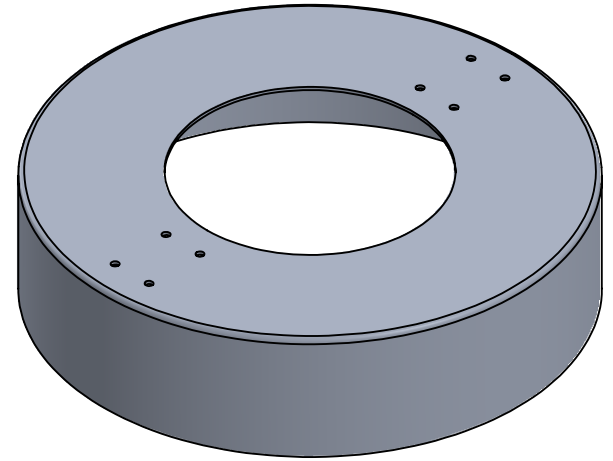
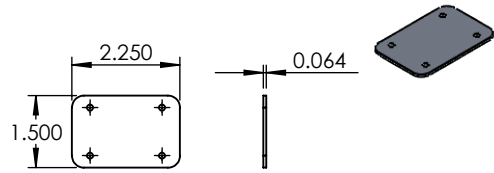
ITEM NO.	PART NUMBER	DESCRIPTION	QTY.
1	BAY-P6-12'-120LED-AB-WF-41K-SPUN CAPS	SPUN ALUMINUM 0.080"	1



UNLESS OTHERWISE SPECIFIED:		NAME	DATE	SPUN ALUMINUM 0.080"	
DIMENSIONS ARE IN INCHES TOLERANCES: FRACTIONAL ± ANGULAR: MACH ± BEND ± TWO PLACE DECIMAL ± THREE PLACE DECIMAL ±		DRAWN			
INTERPRET GEOMETRIC TOLERANCING PER:		CHECKED		BAY-P6-12'-120LED-AB-WF-41K	
MATERIAL		ENG APPR.			
FINISH		MFG APPR.		SIZE DWG. NO. REV	
NEXT ASSY		Q.A.		A	
USED ON		COMMENTS:		SCALE: 1:2 WEIGHT: SHEET 12 OF 14	
APPLICATION		DO NOT SCALE DRAWING			

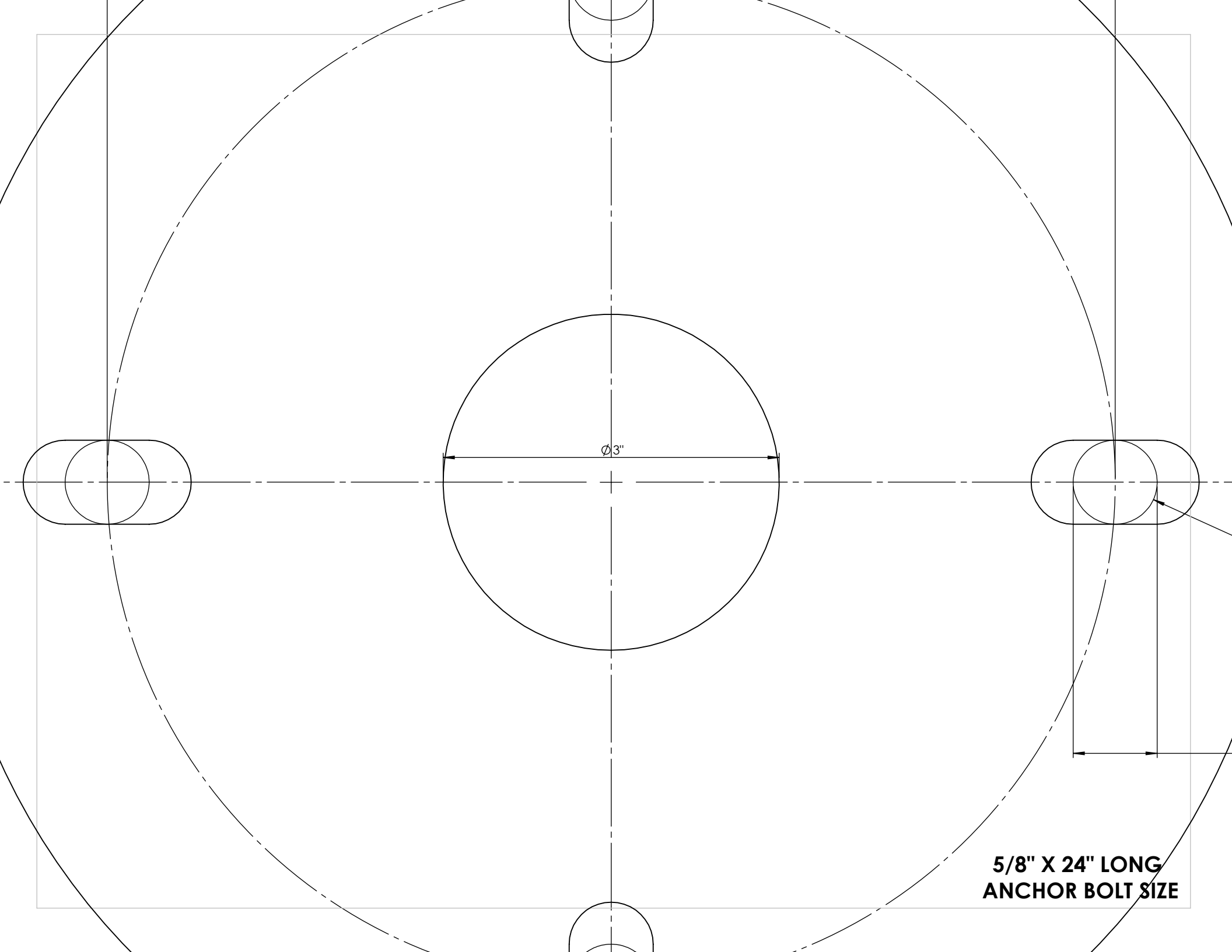
PROPRIETARY AND CONFIDENTIAL
THE INFORMATION CONTAINED IN THIS DRAWING IS THE SOLE PROPERTY OF <INSERT COMPANY NAME HERE>. ANY REPRODUCTION IN PART OR AS A WHOLE WITHOUT THE WRITTEN PERMISSION OF <INSERT COMPANY NAME HERE> IS PROHIBITED.

ITEM NO.	PART NUMBER	DESCRIPTION	QTY.
1	BAY-P6-12'-120LED-AB-WF-41K-SPUN ANCHOR COVER	SPUN ALUMINUM 0.080"	1



UNLESS OTHERWISE SPECIFIED:		NAME	DATE	SPUN ALUMINUM 0.080"	
DIMENSIONS ARE IN INCHES		DRAWN		TITLE: BAY-P6-12'-120LED-AB-WF-41K	
TOLERANCES:		CHECKED			
FRACTIONAL ±		ENG APPR.			
ANGULAR: MACH ± BEND ±		MFG APPR.			
TWO PLACE DECIMAL ±		Q.A.		SIZE	DWG. NO.
THREE PLACE DECIMAL ±		COMMENTS:		A	
INTERPRET GEOMETRIC TOLERANCING PER:				SCALE: 1:4	WEIGHT:
MATERIAL					SHEET 13 OF 14
FINISH					
NEXT ASSY					
USED ON					
APPLICATION					
DO NOT SCALE DRAWING					

PROPRIETARY AND CONFIDENTIAL
 THE INFORMATION CONTAINED IN THIS DRAWING IS THE SOLE PROPERTY OF <INSERT COMPANY NAME HERE>. ANY REPRODUCTION IN PART OR AS A WHOLE WITHOUT THE WRITTEN PERMISSION OF <INSERT COMPANY NAME HERE> IS PROHIBITED.



$\varnothing 3''$

**5/8" X 24" LONG
ANCHOR BOLT SIZE**