

TITLE:

BIR-P6-6'-40LED-TBK-WF24-30K

|          |                     |     |
|----------|---------------------|-----|
| SIZE     | DWG. NO.            | REV |
| <b>A</b> | <b>TICKET 27062</b> |     |

|             |         |               |
|-------------|---------|---------------|
| SCALE: 1:12 | WEIGHT: | SHEET 1 OF 15 |
|-------------|---------|---------------|

**EVERGREEN LIGHTING**

ALL BEND RADIUS .030"

FINISH

APPLICATION

DO NOT SCALE DRAWING

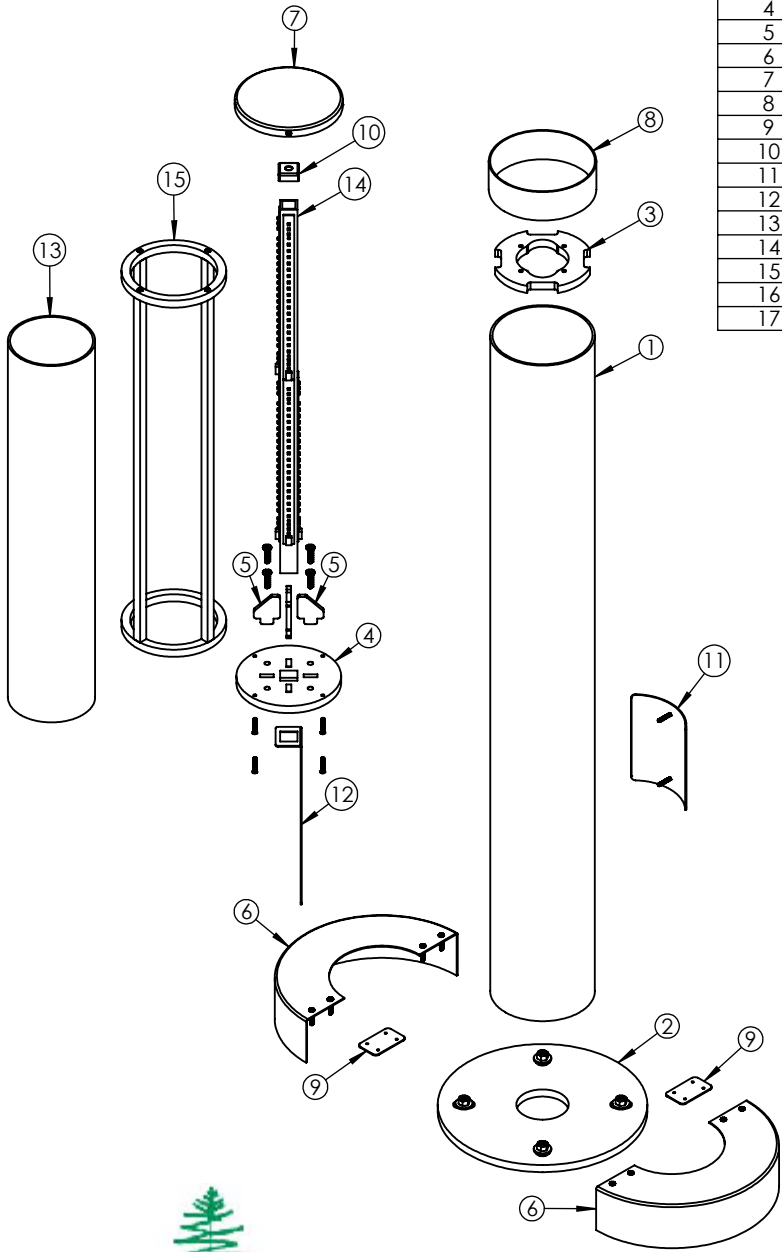
5

4

3

2

1



| ITEM NO. | PART NUMBER  | DESCRIPTION              | QTY. | CUT |
|----------|--|--------------------------|------|-----|
| 1        | BIR-P6-6'-40LED-TBK-WF24-30K-CYLINDER BODY         | 6" ALUMINUM CYLINDER     | 1    |     |
| 2        | BIR-P6-6'-40LED-TBK-WF24-30K-BASE ANCHOR PLATE     | ALUMINUM 0.500" PLATE    | 1    |     |
| 3        | BIR-P6-6'-40LED-TBK-WF24-30K-TUBE FLANGE           | ALUMINUM 0.500" PLATE    | 1    |     |
| 4        | BIR-P6-6'-40LED-TBK-WF24-30K-SUPPORT PLATE         | ALUMINUM 0.500" PLATE    | 1    |     |
| 5        | BIR-P6-6'-40LED-TBK-WF24-30K-SUPPORT PLATE BRACKET | ALUMINUM 0.250" PLATE    | 4    |     |
| 6        | BIR-P6-6'-40LED-TBK-WF24-30K-SPUN ANCHOR COVER     | SPUN ALUMINUM 0.080"     | 2    |     |
| 7        | BIR-P6-6'-40LED-TBK-WF24-30K-SPUN TOP CAP          | SPUN ALUMINUM 0.080"     | 1    |     |
| 8        | BIR-P6-6'-40LED-TBK-WF24-30K-CYLINDER SLEEVE       | SPUN ALUMINUM 0.080"     | 1    |     |
| 9        | BIR-P6-6'-40LED-TBK-WF24-30K-ANCHOR COVER BRACKET  | ALUMINUM 0.0635"         | 2    |     |
| 10       | BIR-P6-6'-40LED-TBK-WF24-30K-TUBE BRACKET          | ALUMINUM 0.0635"         | 1    |     |
| 11       | BIR-P6-6'-40LED-TBK-WF24-30K-HAND COVER            | ALUMINUM 0.0635"         | 1    |     |
| 12       | BIR-P6-6'-40LED-TBK-WF24-30K-DRIVER BRACKET        | ALUMINUM 0.0635"         | 1    |     |
| 13       | BIR-P6-6'-40LED-TBK-WF24-30K-ACRYLIC               | ACRYLIC                  | 1    |     |
| 14       | BIR-P6-6'-40LED-TBK-WF24-30K-SQUARE TUBE           | 1" SQUARE ALUMINUM TUBE  | 1    |     |
| 15       | BIR-P6-6'-40LED-TBK-WF24-30K-ALUMINUM BAR          | 1/2" SQUARE ALUMINUM BAR | 1    |     |
| 16       | ESPEN VEL29070MVH-1                                | DRIVER                   | 2    |     |
| 17       | AltAILED_PN105B_SMD 2.5                            | LED                      | 8    |     |

UNLESS OTHERWISE SPECIFIED:

DIMENSIONS ARE IN INCHES  
 TOLERANCES:  
 FRACTIONAL ± .003  
 ANGULAR: MACH ± .01 BEND ±  
 TWO PLACE DECIMAL ±  
 THREE PLACE DECIMAL ±.001

INTERPRET GEOMETRIC  
 TOLERANCING PER:

MATERIAL

FINISH

APPLICATION

DO NOT SCALE DRAWING

| NAME      | DATE |
|-----------|------|
| DRAWN     |      |
| CHECKED   |      |
| ENG APPR. |      |
| MFG APPR. |      |
| Q.A.      |      |
| COMMENTS: |      |

|                              |              |               |
|------------------------------|--------------|---------------|
| TITLE:                       |              |               |
| BIR-P6-6'-40LED-TBK-WF24-30K |              |               |
| SIZE                         | DWG. NO.     | REV           |
| <b>A</b>                     | TICKET 27062 |               |
| SCALE: 1:11                  | WEIGHT:      | SHEET 2 OF 15 |



ALL BEND RADIUS .030"

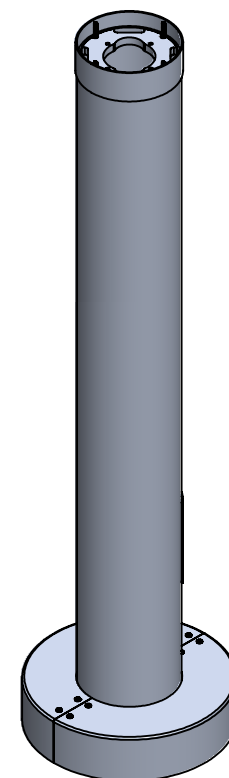
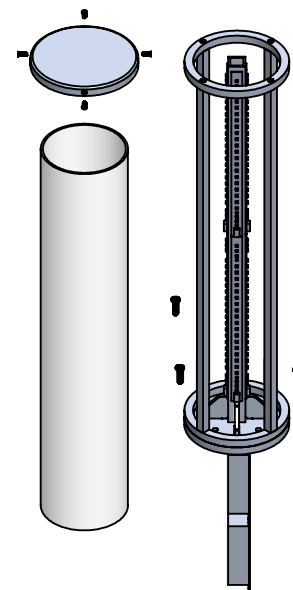
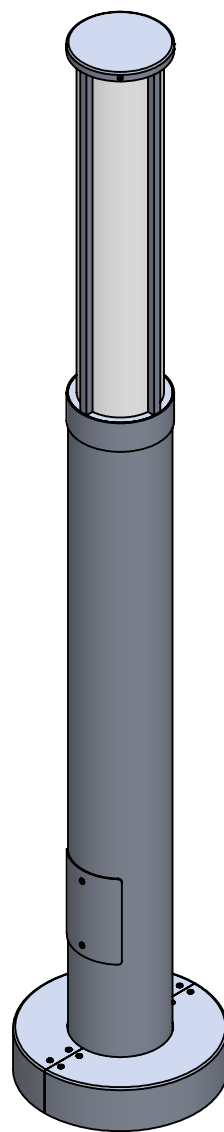
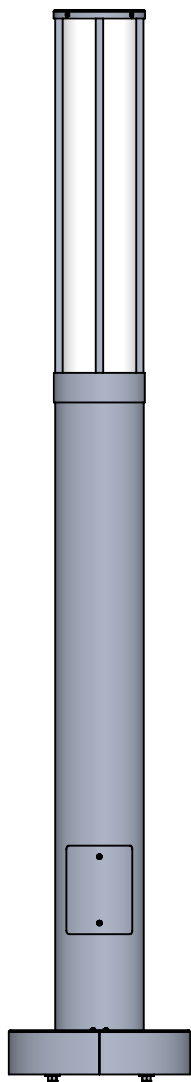
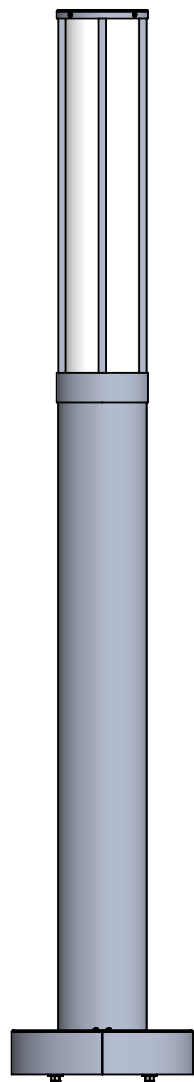
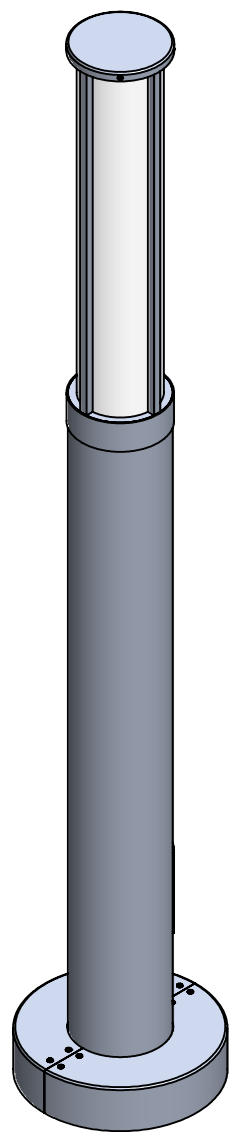
5

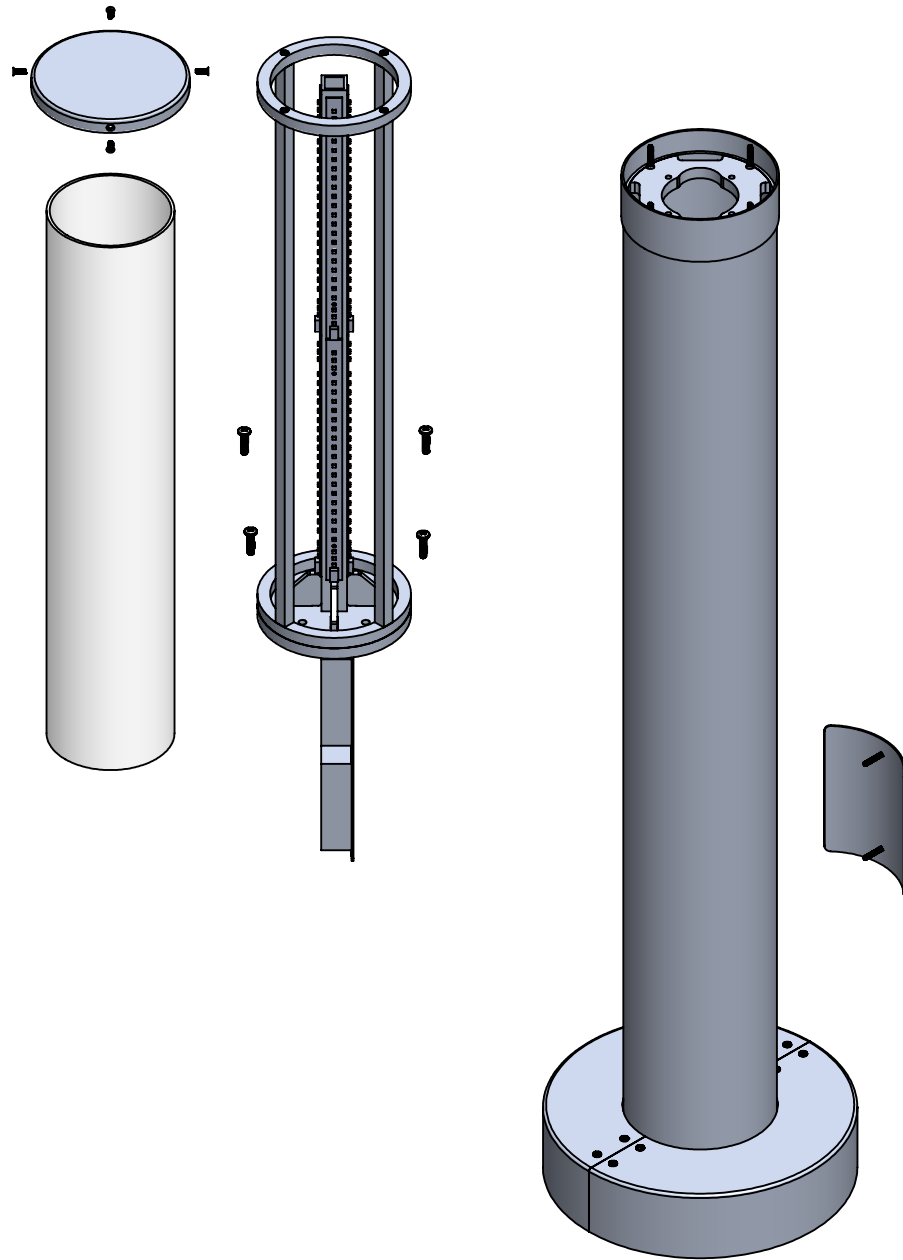
4

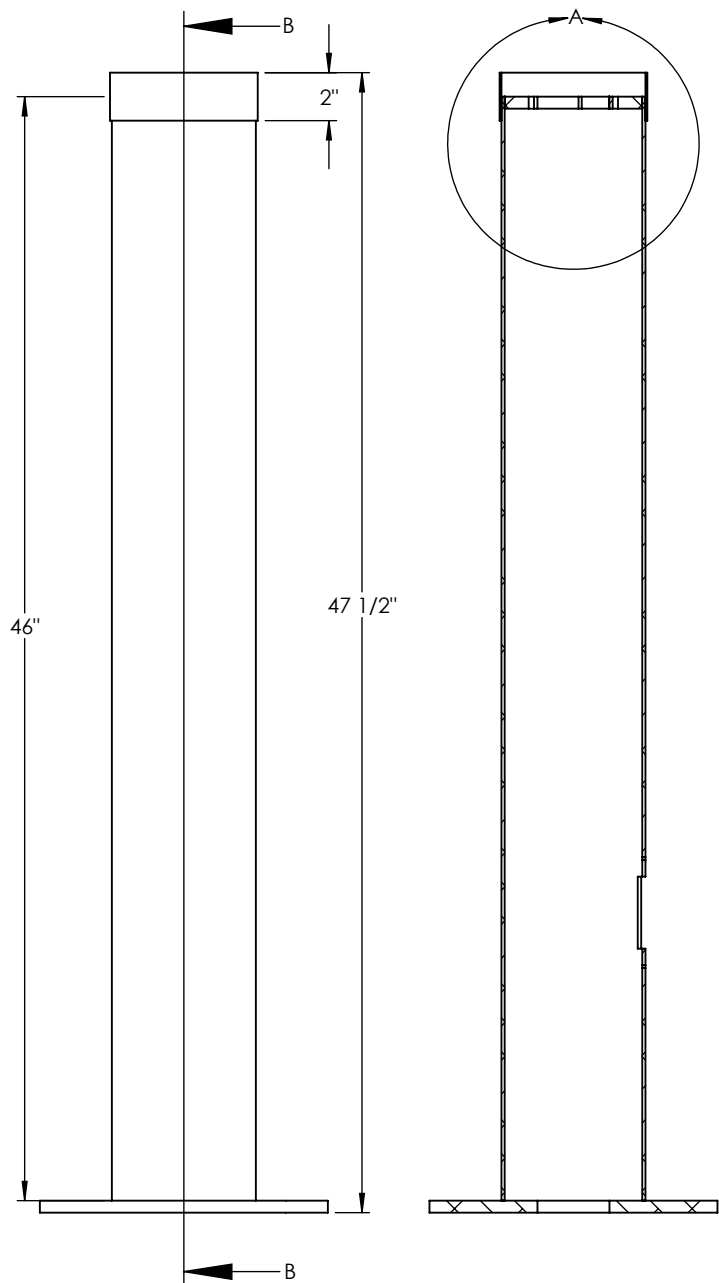
3

2

1

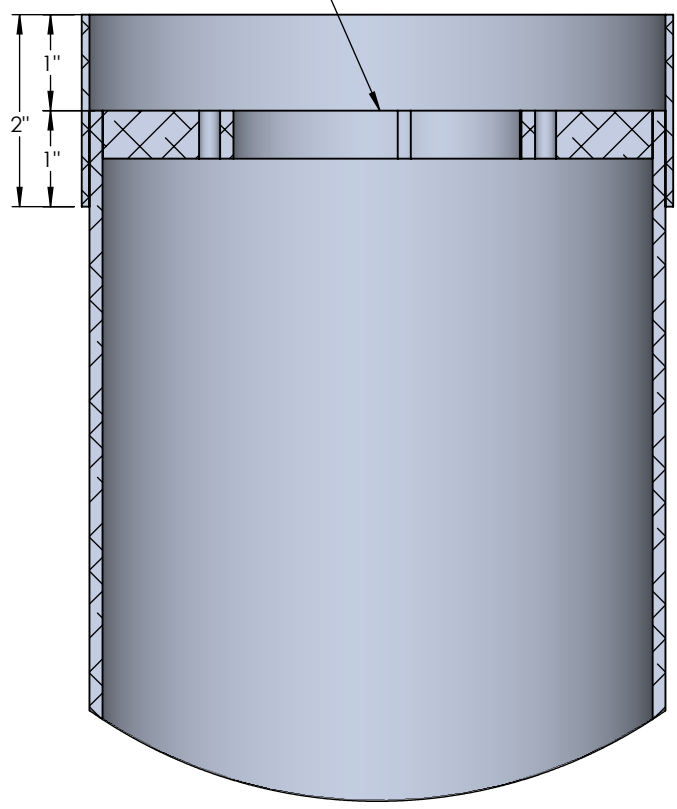




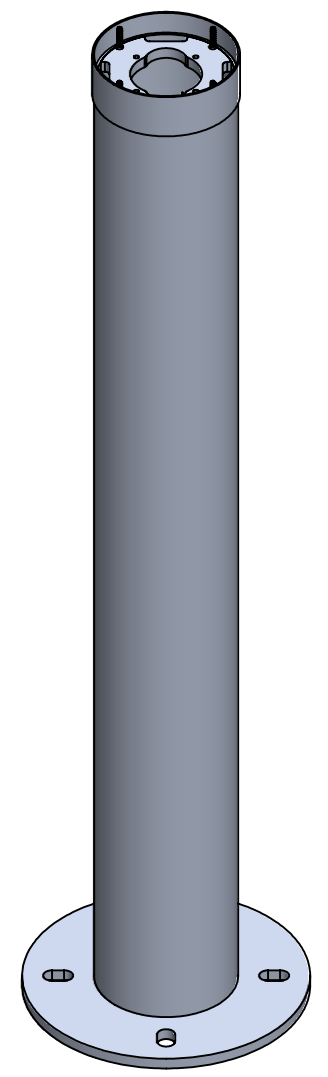


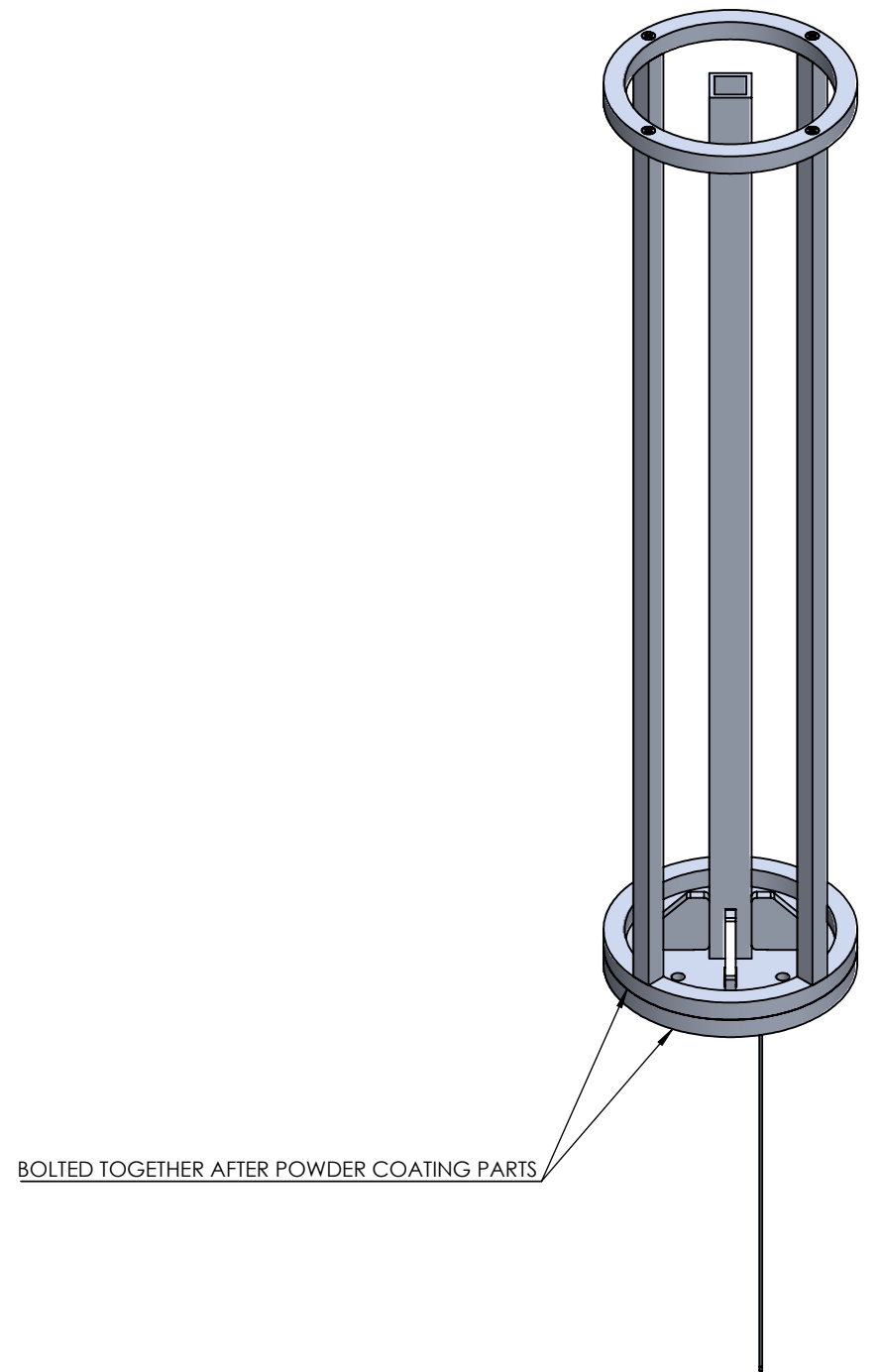
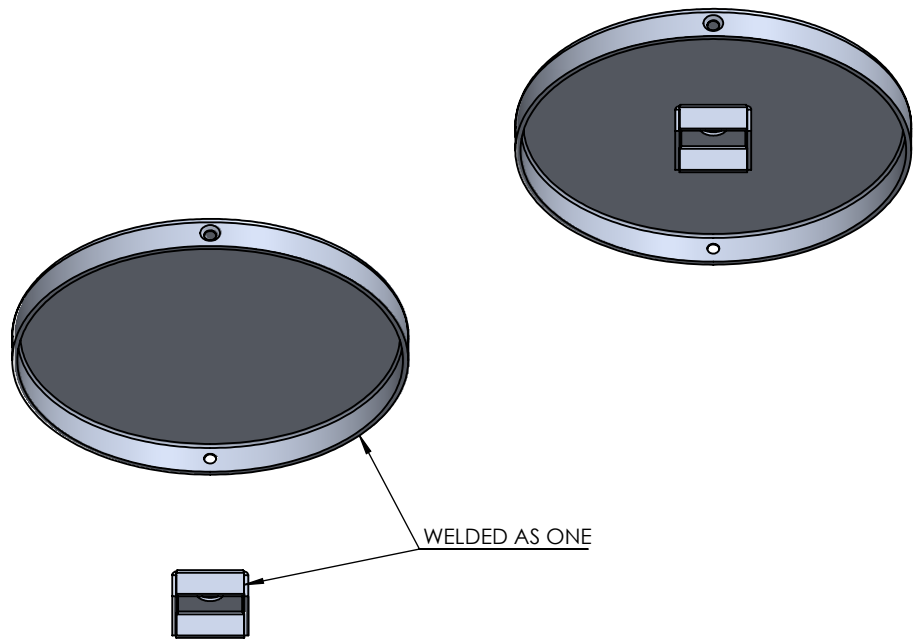
SECTION B-B

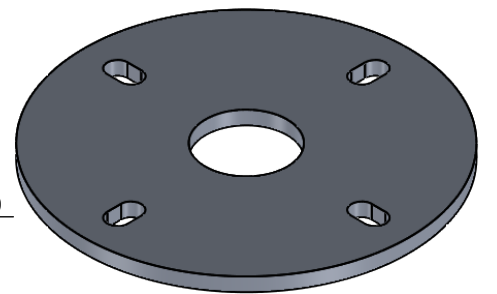
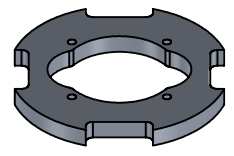
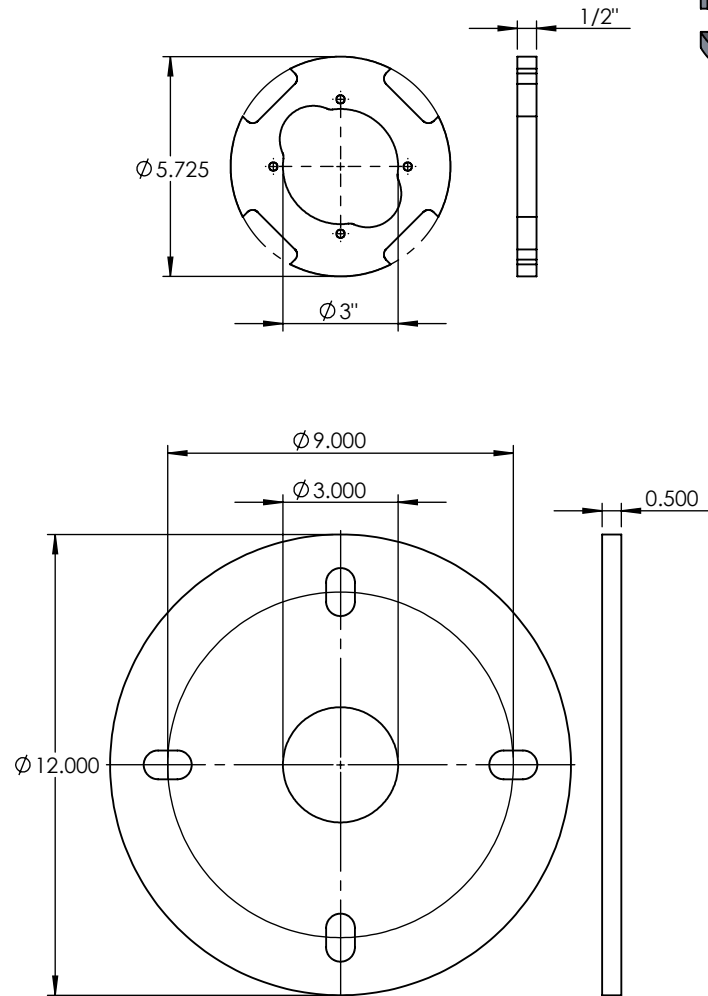
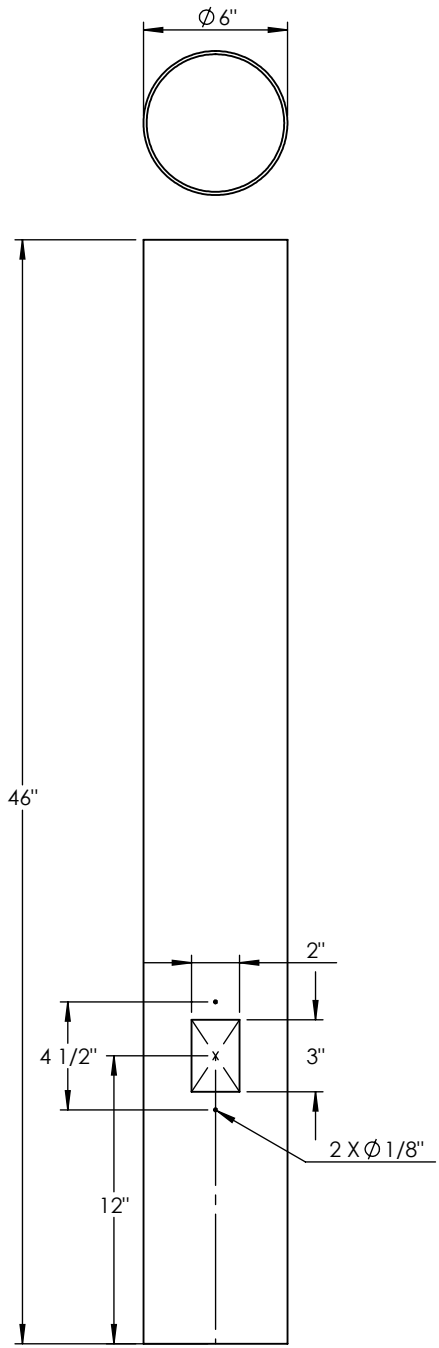
CYLINDER SLEEVE SITS 1" FROM TOP OF POST CYLINDER  
 TUBE FLANGE SITS FLUSH TO TOP OF POST CYLINDER



DETAIL A  
 SCALE 1 : 2







|   |  |           |      |                                     |         |               |
|---|--|-----------|------|-------------------------------------|---------|---------------|
| UNLESS OTHERWISE SPECIFIED:   |  | NAME      | DATE | <b>6" ALUMINUM CYLINDER</b>         |         |               |
| DIMENSIONS ARE IN INCHES<br>TOLERANCES:<br>FRACTIONAL ±<br>ANGULAR: MACH ± BEND ±<br>TWO PLACE DECIMAL ±<br>THREE PLACE DECIMAL ± |  | DRAWN     |      |                                     |         | TITLE:        |
| INTERPRET GEOMETRIC<br>TOLERANCING PER:   |  | CHECKED   |      | <b>BIR-P6-6'-40LED-TBK-WF24-30K</b> |         |               |
| MATERIAL  |  | ENG APPR. |      |                                     |         | SIZE          |
| FINISH  |  | MFG APPR. |      | <b>A</b>                            |         |               |
| DO NOT SCALE DRAWING  |  | Q.A.      |      | SCALE: 1:8                          | WEIGHT: | SHEET 7 OF 15 |
|   |  | COMMENTS: |      |                                     |         |               |

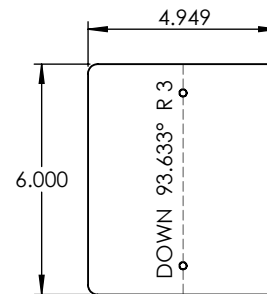
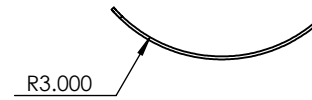
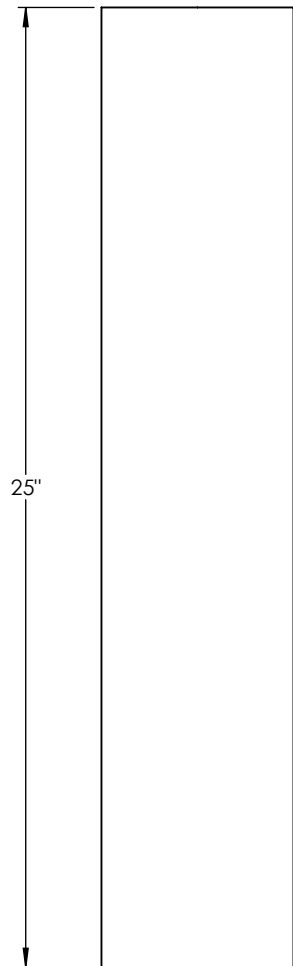
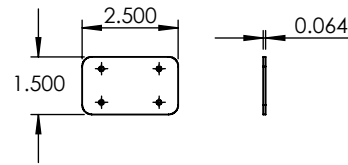
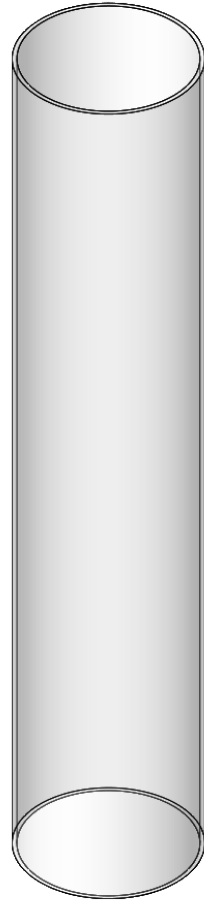
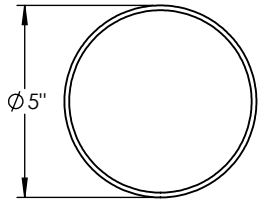
5

4

3

2

1



|   |  |                      |      |                              |            |         |
|---|--|----------------------|------|------------------------------|------------|---------|
| UNLESS OTHERWISE SPECIFIED:   |  | NAME                 | DATE | ALUMINUM 0.0635"             |            |         |
| DIMENSIONS ARE IN INCHES<br>TOLERANCES:<br>FRACTIONAL ±<br>ANGULAR: MACH ± BEND ±<br>TWO PLACE DECIMAL ±<br>THREE PLACE DECIMAL ± |  | DRAWN                |      |                              |            | TITLE:  |
| INTERPRET GEOMETRIC<br>TOLERANCING PER:   |  | CHECKED              |      | BIR-P6-6'-40LED-TBK-WF24-30K |            |         |
| MATERIAL  |  | ENG APPR.            |      |                              |            |         |
| FINISH  |  | MFG APPR.            |      | SIZE                         | DWG. NO.   | REV     |
| NEXT ASSY   |  | Q.A.                 |      | <b>A</b>                     |            |         |
| USED ON   |  | COMMENTS:            |      |                              | SCALE: 1:5 | WEIGHT: |
| APPLICATION   |  | DO NOT SCALE DRAWING |      |                              |            |         |

5

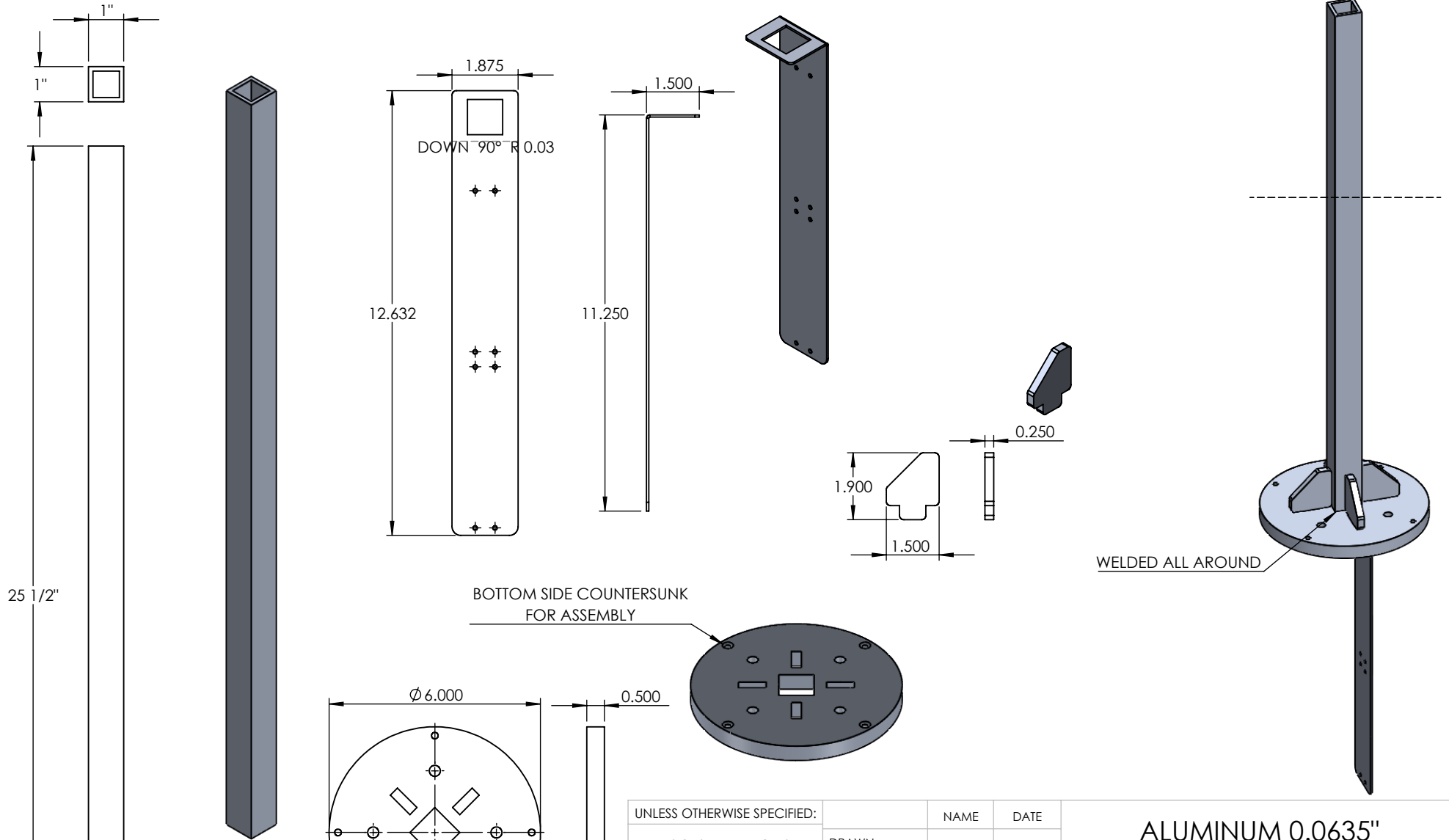
4

3

2

1



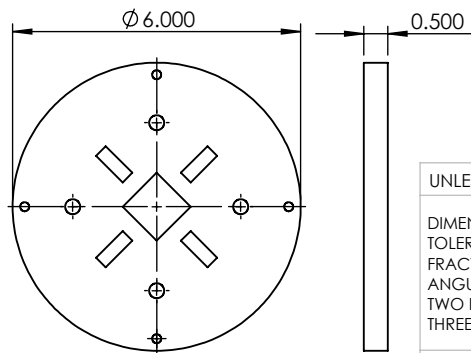


25 1/2"

DOWN 90° R 0.03

BOTTOM SIDE COUNTERSUNK FOR ASSEMBLY

WELDED ALL AROUND



UNLESS OTHERWISE SPECIFIED:

DIMENSIONS ARE IN INCHES  
 TOLERANCES:  
 FRACTIONAL ±  
 ANGULAR: MACH ± BEND ±  
 TWO PLACE DECIMAL ±  
 THREE PLACE DECIMAL ±

INTERPRET GEOMETRIC TOLERANCING PER:

MATERIAL

FINISH

DO NOT SCALE DRAWING

NAME

DATE

DRAWN

CHECKED

ENG APPR.

MFG APPR.

Q.A.

COMMENTS:

ALUMINUM 0.0635"

TITLE:

BIR-P6-6'-40LED-TBK-WF24-30K

SIZE  
**A**

DWG. NO.

REV

SCALE: 1:4

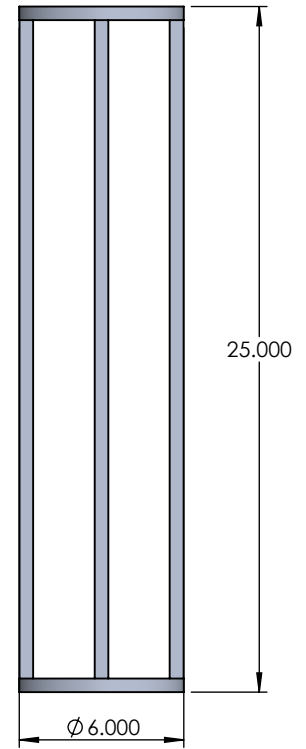
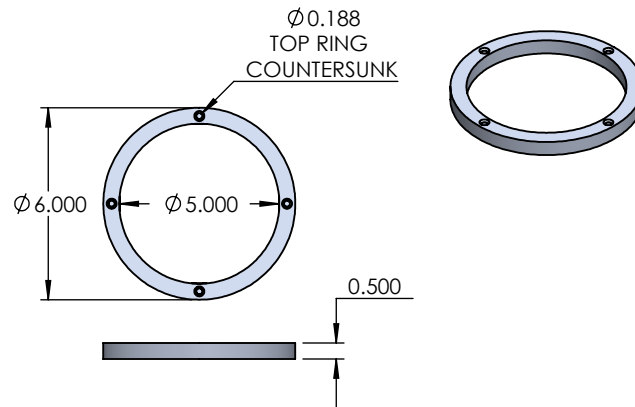
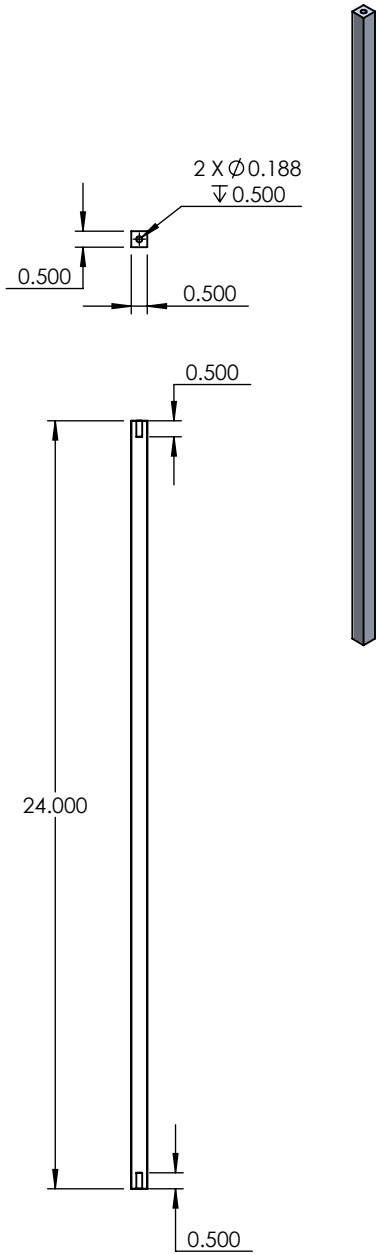
WEIGHT:

SHEET 9 OF 15

**PROPRIETARY AND CONFIDENTIAL**

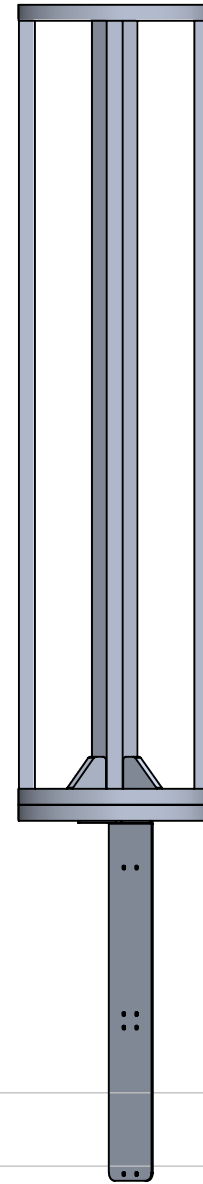
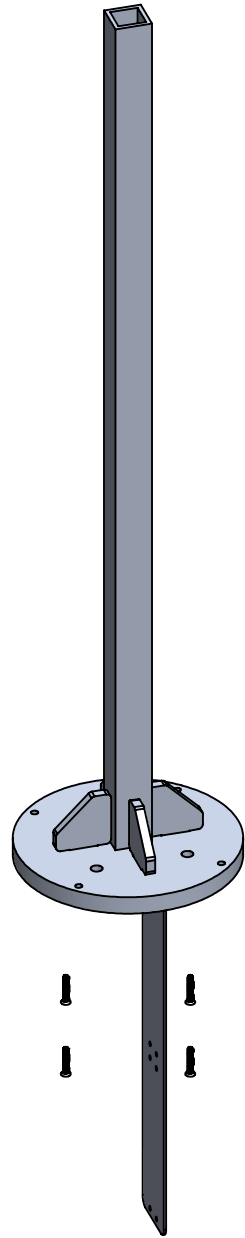
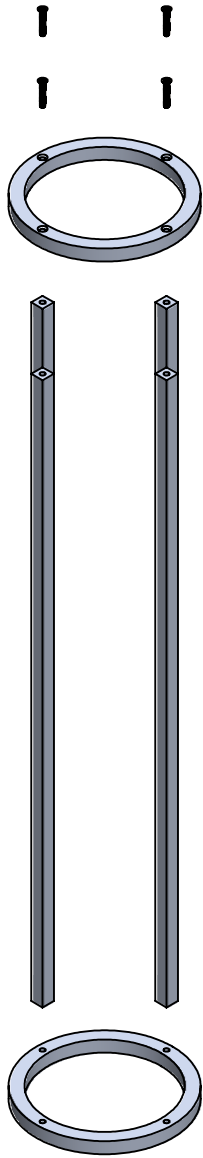
THE INFORMATION CONTAINED IN THIS DRAWING IS THE SOLE PROPERTY OF <INSERT COMPANY NAME HERE>. ANY REPRODUCTION IN PART OR AS A WHOLE WITHOUT THE WRITTEN PERMISSION OF <INSERT COMPANY NAME HERE> IS PROHIBITED.

|             |         |
|-------------|---------|
| NEXT ASSY   | USED ON |
| APPLICATION |         |



**PROPRIETARY AND CONFIDENTIAL**  
 THE INFORMATION CONTAINED IN THIS DRAWING IS THE SOLE PROPERTY OF <INSERT COMPANY NAME HERE>. ANY REPRODUCTION IN PART OR AS A WHOLE WITHOUT THE WRITTEN PERMISSION OF <INSERT COMPANY NAME HERE> IS PROHIBITED.

|             |         |   |           |      |  |
|-------------|---------|---|-----------|------|--|
|             |         | UNLESS OTHERWISE SPECIFIED:   | NAME      | DATE | TITLE:<br><br>BIR-P6-6'-40LED-TBK-WF24-30K |
|             |         | DIMENSIONS ARE IN INCHES<br>TOLERANCES:<br>FRACTIONAL ±<br>ANGULAR: MACH ± BEND ±<br>TWO PLACE DECIMAL ±<br>THREE PLACE DECIMAL ± | DRAWN     |      |  |
|             |         | INTERPRET GEOMETRIC<br>TOLERANCING PER:   | CHECKED   |      |  |
|             |         | MATERIAL  | ENG APPR. |      |  |
| NEXT ASSY   | USED ON | FINISH  | MFG APPR. |      | SIZE                                       |
| APPLICATION |         | DO NOT SCALE DRAWING  | Q.A.      |      | DWG. NO.                                   |
|             |         |   | COMMENTS: |      | REV  |
|             |         |   |           |      | SCALE: 1:6                                 |
|             |         |   |           |      | WEIGHT:                                    |
|             |         |   |           |      | SHEET 10 OF 15                             |



**PROPRIETARY AND CONFIDENTIAL**  
 THE INFORMATION CONTAINED IN THIS DRAWING IS THE SOLE PROPERTY OF <INSERT COMPANY NAME HERE>. ANY REPRODUCTION IN PART OR AS A WHOLE WITHOUT THE WRITTEN PERMISSION OF <INSERT COMPANY NAME HERE> IS PROHIBITED.

|             |         |  |                                      |
|-------------|---------|--|--------------------------------------|
|             |         |  | UNLESS OTHERWISE SPECIFIED:          |
|             |         |  | DIMENSIONS ARE IN INCHES             |
|             |         |  | TOLERANCES:                          |
|             |         |  | FRACTIONAL ±                         |
|             |         |  | ANGULAR: MACH ± BEND ±               |
|             |         |  | TWO PLACE DECIMAL ±                  |
|             |         |  | THREE PLACE DECIMAL ±                |
|             |         |  | INTERPRET GEOMETRIC TOLERANCING PER: |
|             |         |  | MATERIAL                             |
|             |         |  | FINISH                               |
| NEXT ASSY   | USED ON |  |                                      |
| APPLICATION |         |  | DO NOT SCALE DRAWING                 |

| UNLESS OTHERWISE SPECIFIED: | NAME | DATE |
|-----------------------------|------|------|
| DRAWN                       |      |      |
| CHECKED                     |      |      |
| ENG APPR.                   |      |      |
| MFG APPR.                   |      |      |
| Q.A.                        |      |      |

COMMENTS:

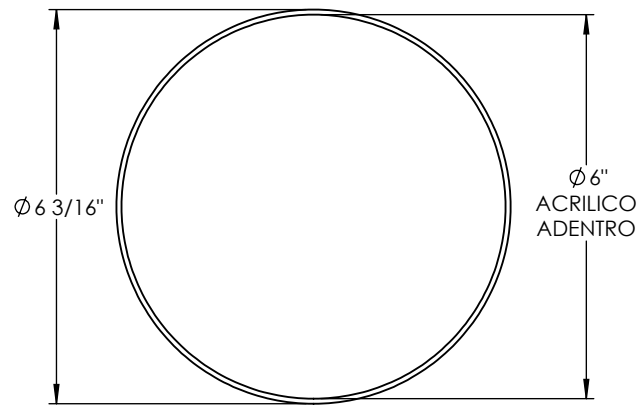
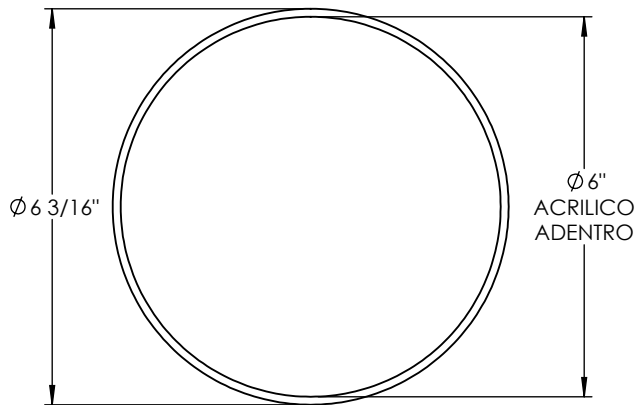
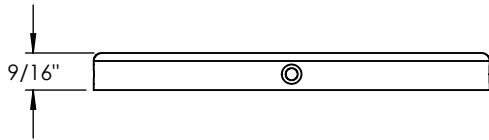
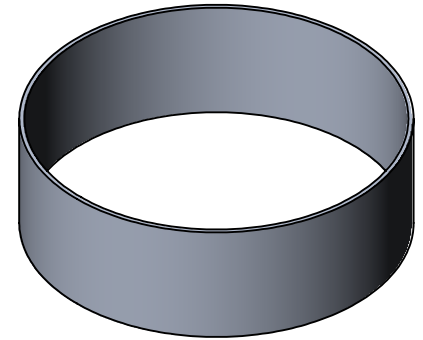
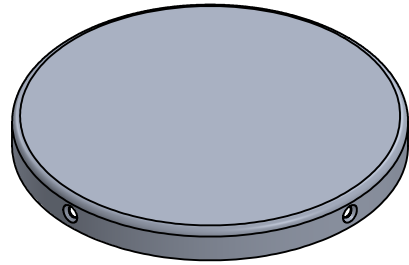
TITLE:  
 BIR-P6-6'-40LED-TBK-WF24-30K

SIZE **A** DWG. NO. REV

SCALE: 1:6 WEIGHT: SHEET 11 OF 15

| ITEM NO. | PART NUMBER                               | DESCRIPTION          | QTY. |
|----------|---|----------------------|------|
| 1        | BIR-P6-6'-40LED-TBK-WF24-30K-SPUN TOP CAP | SPUN ALUMINUM 0.080" | 1    |

| ITEM NO. | PART NUMBER                                  | DESCRIPTION          | QTY. |
|----------|--|----------------------|------|
| 1        | BIR-P6-6'-40LED-TBK-WF24-30K-CYLINDER SLEEVE | SPUN ALUMINUM 0.080" | 1    |

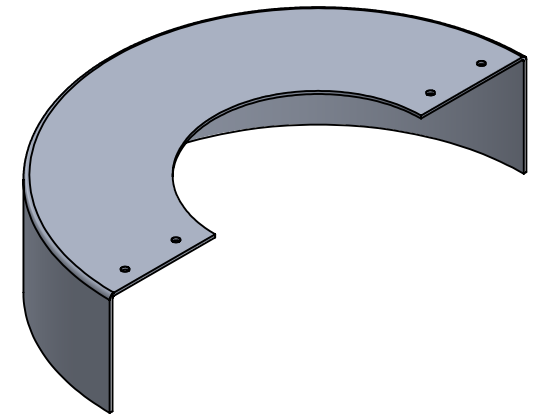
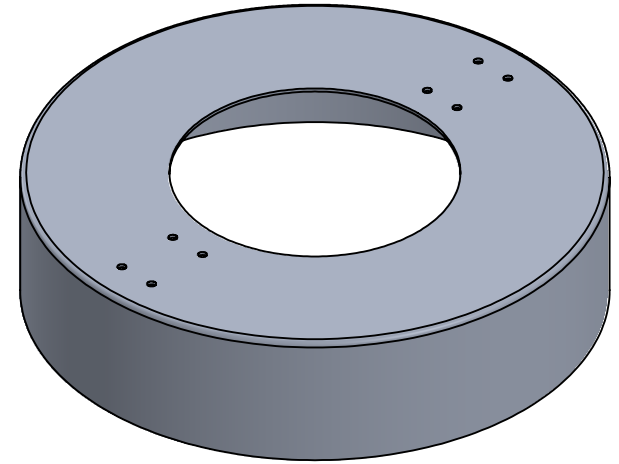
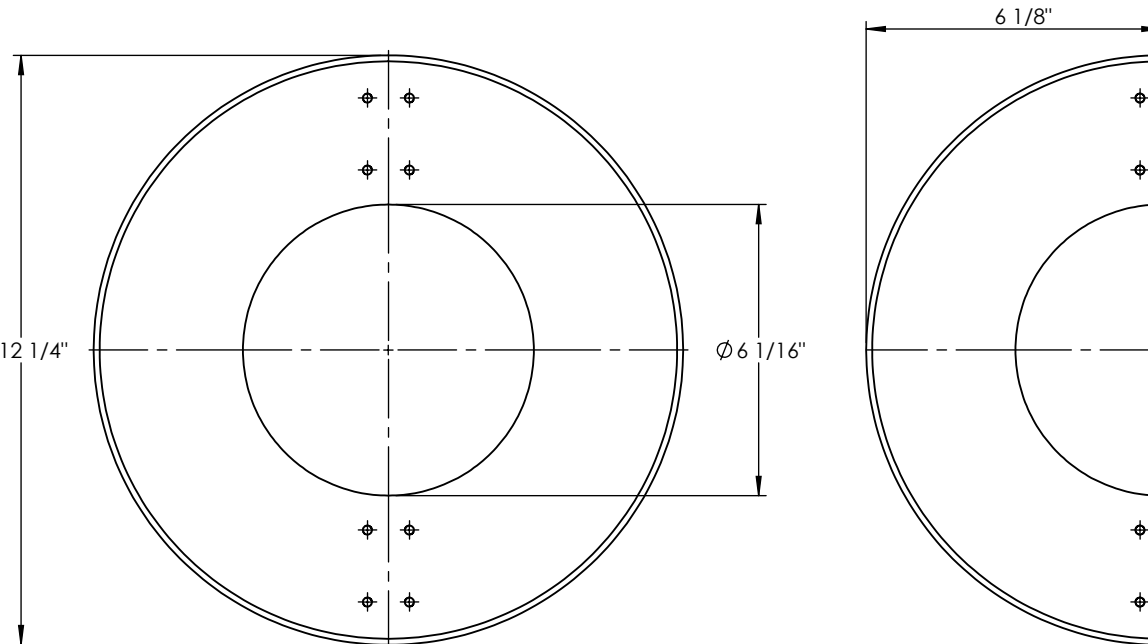
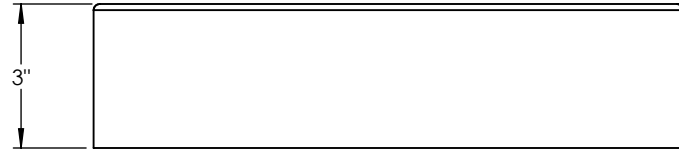


**PROPRIETARY AND CONFIDENTIAL**  
 THE INFORMATION CONTAINED IN THIS DRAWING IS THE SOLE PROPERTY OF <INSERT COMPANY NAME HERE>. ANY REPRODUCTION IN PART OR AS A WHOLE WITHOUT THE WRITTEN PERMISSION OF <INSERT COMPANY NAME HERE> IS PROHIBITED.

|             |         |                                      |           |      |      |
|-------------|---------|--------------------------------------|-----------|------|------|
|             |         | UNLESS OTHERWISE SPECIFIED:          |           | NAME | DATE |
|             |         | DIMENSIONS ARE IN INCHES             | DRAWN     |      |      |
|             |         | TOLERANCES:                          | CHECKED   |      |      |
|             |         | FRACTIONAL ±                         | ENG APPR. |      |      |
|             |         | ANGULAR: MACH ± BEND ±               | MFG APPR. |      |      |
|             |         | TWO PLACE DECIMAL ±                  | Q.A.      |      |      |
|             |         | THREE PLACE DECIMAL ±                | COMMENTS: |      |      |
|             |         | INTERPRET GEOMETRIC TOLERANCING PER: |           |      |      |
|             |         | MATERIAL                             |           |      |      |
|             |         | FINISH                               |           |      |      |
| NEXT ASSY   | USED ON |                                      |           |      |      |
| APPLICATION |         | DO NOT SCALE DRAWING                 |           |      |      |

|                              |          |                |
|------------------------------|----------|----------------|
| SPUN ALUMINUM 0.080"         |          |                |
| TITLE:                       |          |                |
| BIR-P6-6'-40LED-TBK-WF24-30K |          |                |
| SIZE                         | DWG. NO. | REV            |
| <b>A</b>                     |          |                |
| SCALE: 1:3                   | WEIGHT:  | SHEET 12 OF 15 |

| ITEM NO. | PART NUMBER                                    | DESCRIPTION          | QTY. |
|----------|--|----------------------|------|
| 1        | BIR-P6-6'-40LED-TBK-WF24-30K-SPUN ANCHOR COVER | SPUN ALUMINUM 0.080" | 1    |



**PROPRIETARY AND CONFIDENTIAL**  
 THE INFORMATION CONTAINED IN THIS DRAWING IS THE SOLE PROPERTY OF <INSERT COMPANY NAME HERE>. ANY REPRODUCTION IN PART OR AS A WHOLE WITHOUT THE WRITTEN PERMISSION OF <INSERT COMPANY NAME HERE> IS PROHIBITED.

|           |             |                                      |           |      |      |
|-----------|-------------|--------------------------------------|-----------|------|------|
|           |             | UNLESS OTHERWISE SPECIFIED:          |           | NAME | DATE |
|           |             | DIMENSIONS ARE IN INCHES             | DRAWN     |      |      |
|           |             | TOLERANCES:                          | CHECKED   |      |      |
|           |             | FRACTIONAL ±                         | ENG APPR. |      |      |
|           |             | ANGULAR: MACH ± BEND ±               | MFG APPR. |      |      |
|           |             | TWO PLACE DECIMAL ±                  | Q.A.      |      |      |
|           |             | THREE PLACE DECIMAL ±                | COMMENTS: |      |      |
|           |             | INTERPRET GEOMETRIC TOLERANCING PER: |           |      |      |
|           |             | MATERIAL                             |           |      |      |
| NEXT ASSY | USED ON     | FINISH                               |           |      |      |
|           | APPLICATION | DO NOT SCALE DRAWING                 |           |      |      |

|                              |          |                |
|------------------------------|----------|----------------|
| SPUN ALUMINUM 0.080"         |          |                |
| TITLE:                       |          |                |
| BIR-P6-6'-40LED-TBK-WF24-30K |          |                |
| SIZE                         | DWG. NO. | REV            |
| <b>A</b>                     |          |                |
| SCALE: 1:14                  | WEIGHT:  | SHEET 13 OF 15 |

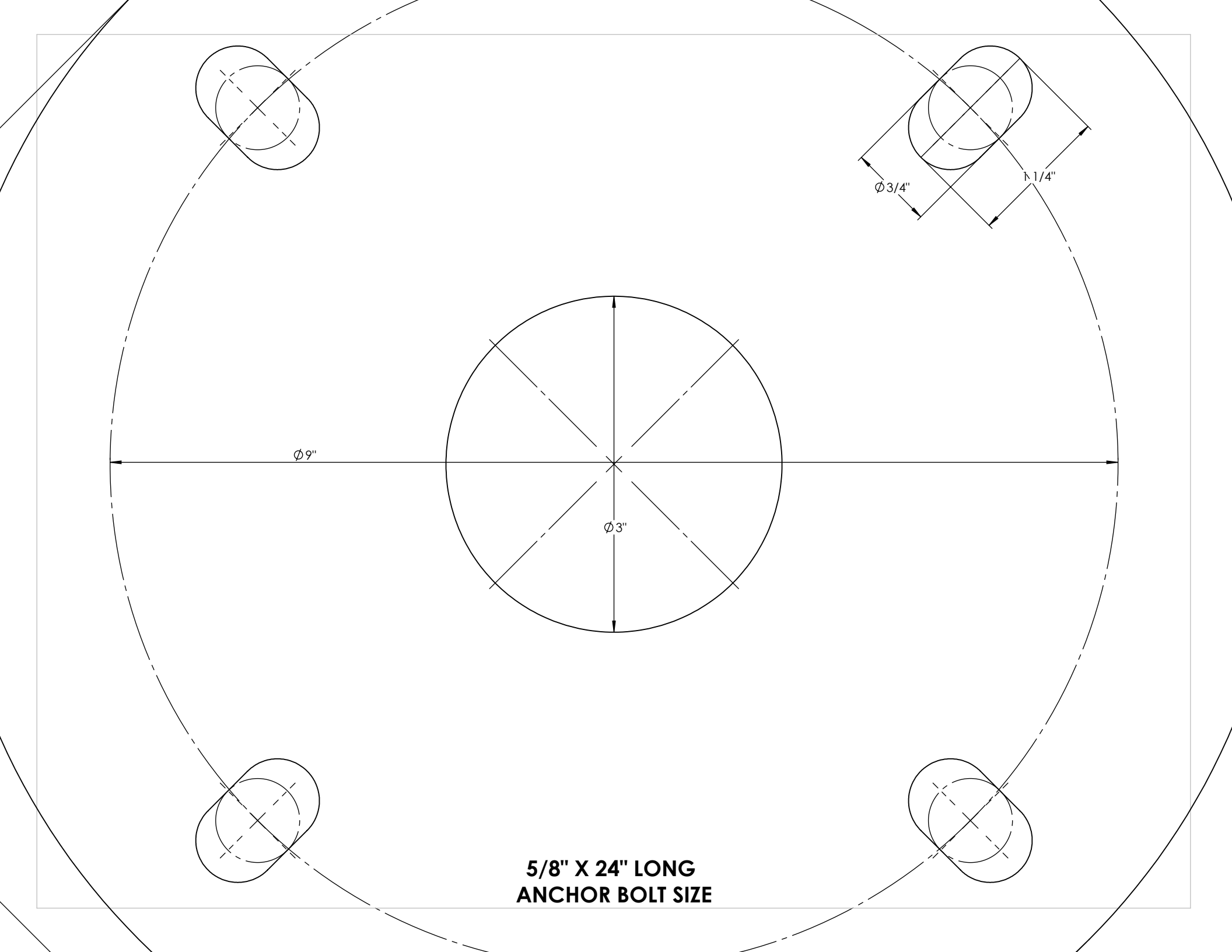
5

4

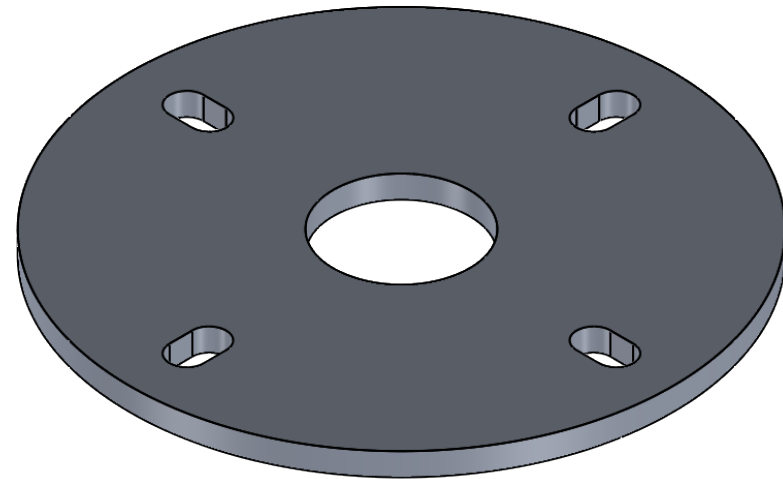
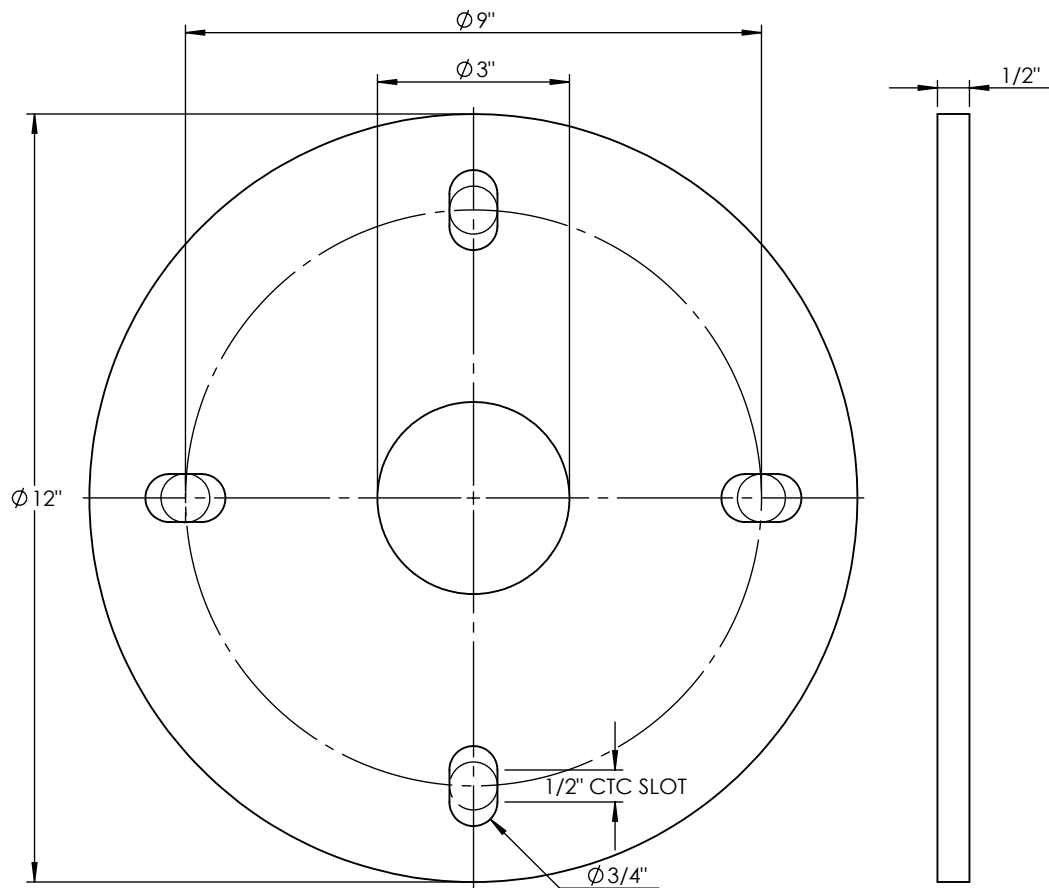
3

2

1



**5/8" X 24" LONG  
ANCHOR BOLT SIZE**



**PROPRIETARY AND CONFIDENTIAL**  
 THE INFORMATION CONTAINED IN THIS DRAWING IS THE SOLE PROPERTY OF <INSERT COMPANY NAME HERE>. ANY REPRODUCTION IN PART OR AS A WHOLE WITHOUT THE WRITTEN PERMISSION OF <INSERT COMPANY NAME HERE> IS PROHIBITED.

|  |             |                                      |           |      |
|--|-------------|--------------------------------------|-----------|------|
|  |             | UNLESS OTHERWISE SPECIFIED:          | NAME      | DATE |
|  |             | DIMENSIONS ARE IN INCHES             | DRAWN     |      |
|  |             | TOLERANCES:                          | CHECKED   |      |
|  |             | FRACTIONAL $\pm$                     | ENG APPR. |      |
|  |             | ANGULAR: MACH $\pm$ BEND $\pm$       | MFG APPR. |      |
|  |             | TWO PLACE DECIMAL $\pm$              | Q.A.      |      |
|  |             | THREE PLACE DECIMAL $\pm$            | COMMENTS: |      |
|  |             | INTERPRET GEOMETRIC TOLERANCING PER: |           |      |
|  |             | MATERIAL                             |           |      |
|  | NEXT ASSY   | USED ON                              |           |      |
|  |             | FINISH                               |           |      |
|  | APPLICATION | DO NOT SCALE DRAWING                 |           |      |

|                              |          |                |
|------------------------------|----------|----------------|
| ALUMINUM 0.500" PLATE        |          |                |
| TITLE:                       |          |                |
| BIR-P6-6'-40LED-TBK-WF24-30K |          |                |
| SIZE                         | DWG. NO. | REV            |
| <b>A</b>                     |          |                |
| SCALE: 1:3                   | WEIGHT:  | SHEET 15 OF 15 |