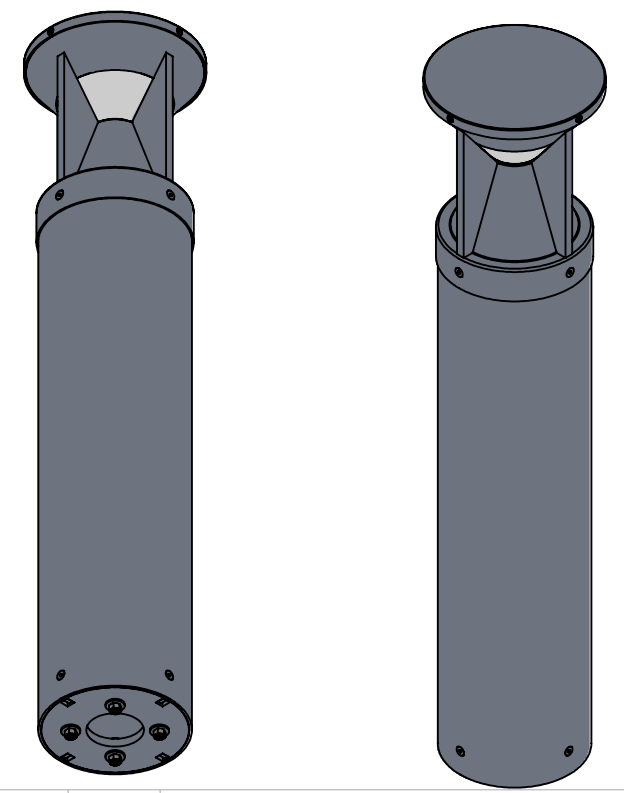


| ITEM NO. | PART NUMBER                                      | DESCRIPTION           | QTY. | CUT |
|----------|--|-----------------------|------|-----|
| 1        | BOL-2CON-43-36L-DB-CFA-DIM-41K-CYLINDER TUBE     | 8" CYLINDER TUBE      | 1    |     |
| 2        | BOL-2CON-43-36L-DB-CFA-DIM-41K-ANCHOR PLATE      | ALUMINUM 0.500" PLATE | 1    |     |
| 3        | BOL-2CON-43-36L-DB-CFA-DIM-41K-ANCHOR PLATE TAB  | ALUMINUM 0.500" PLATE | 4    |     |
| 4        | BOL-2CON-43-36L-DB-CFA-DIM-41K-VERTICAL FIN      | ALUMINUM 0.500" PLATE | 4    |     |
| 5        | BOL-2CON-43-36L-DB-CFA-DIM-41K-SPUN TOP CAP      | SPUN ALUMINUM 0.080"  | 1    |     |
| 6        | BOL-2CON-43-36L-DB-CFA-DIM-41K-SPUN CONE HEAD    | SPUN ALUMINUM 0.080"  | 1    |     |
| 7        | BOL-2CON-43-36L-DB-CFA-DIM-41K-SPUN CONE         | SPUN ALUMINUM 0.080"  | 1    |     |
| 8        | BOL-2CON-43-36L-DB-CFA-DIM-41K-LED PLATE         | ALUMINUM 0.0625"      | 1    |     |
| 9        | BOL-2CON-43-36L-DB-CFA-DIM-41K-DRIVER BRACKET    | ALUMINUM 0.0635"      | 1    |     |
| 10       | BOL-2CON-43-36L-DB-CFA-DIM-41K-ACRYLIC TUBE      | ACRYLIC               | 1    |     |
| 11       | BOL-2CON-43-36L-DB-CFA-DIM-41K-0.375" ROUND TUBE | 3/8" THREADED ROD     | 1    |     |
| 12       | 8-32 SS Hex Drive Flat Head                      | 8-32 FLAT HEAD SCREW  | 4    |     |
| 18       | Alfal LED PN1019 SHIM PLATE                      | ALUMINUM 0.125" PLATE | 4    |     |
| 19       | HATCH-LC25-0700Z-UNV-Q                           | DRIVER                | 2    |     |
| 20       | Alfal LED PN1019 RevC                            | LED                   | 4    |     |
| 21       | 8-32-0.5 SS Hex Drive Flat Head                  | 8-32 FLAT HEAD SCREW  | 4    |     |



**EVERGREEN LIGHTING**

ALL BEND RADIUS .030"

|                                      |           |      |
|--------------------------------------|-----------|------|
| UNLESS OTHERWISE SPECIFIED:          | NAME      | DATE |
| DIMENSIONS ARE IN INCHES             | DRAWN     |      |
| TOLERANCES:                          | CHECKED   |      |
| FRACTIONAL ± .003                    | ENG APPR. |      |
| ANGULAR: MACH ± .01 BEND ±           | MFG APPR. |      |
| TWO PLACE DECIMAL ±                  | Q.A.      |      |
| THREE PLACE DECIMAL ± .001           | COMMENTS: |      |
| INTERPRET GEOMETRIC TOLERANCING PER: |           |      |
| MATERIAL                             |           |      |
| FINISH                               |           |      |

TITLE:  
**BOL-2CON-43-36L-DB-CFA-DIM-41K**

|             |                     |               |
|-------------|---------------------|---------------|
| SIZE        | DWG. NO.            | REV           |
| <b>A</b>    | <b>TICKET 27076</b> |               |
| SCALE: 1:10 | WEIGHT:             | SHEET 1 OF 11 |

5

4

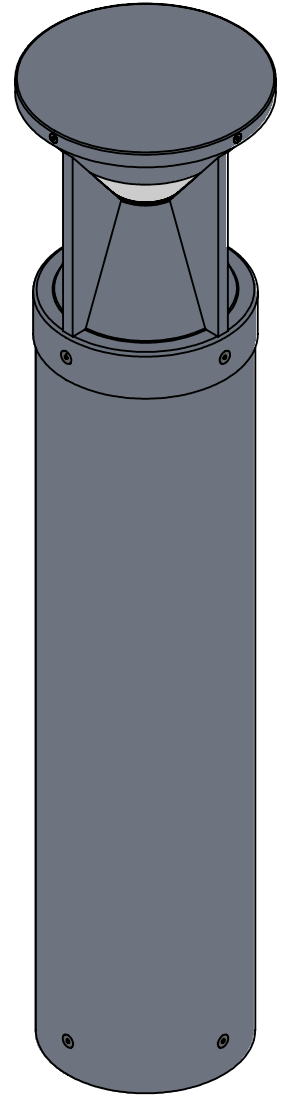
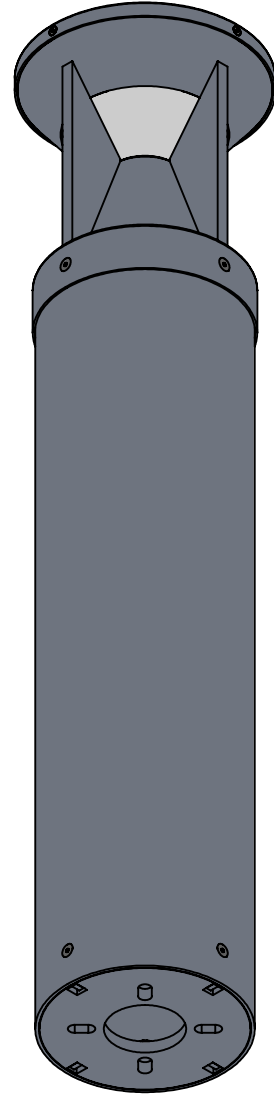
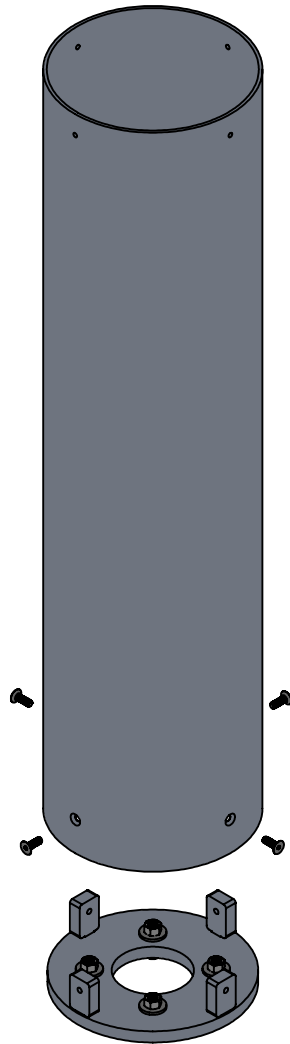
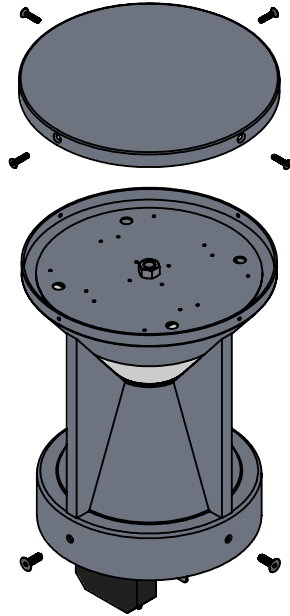
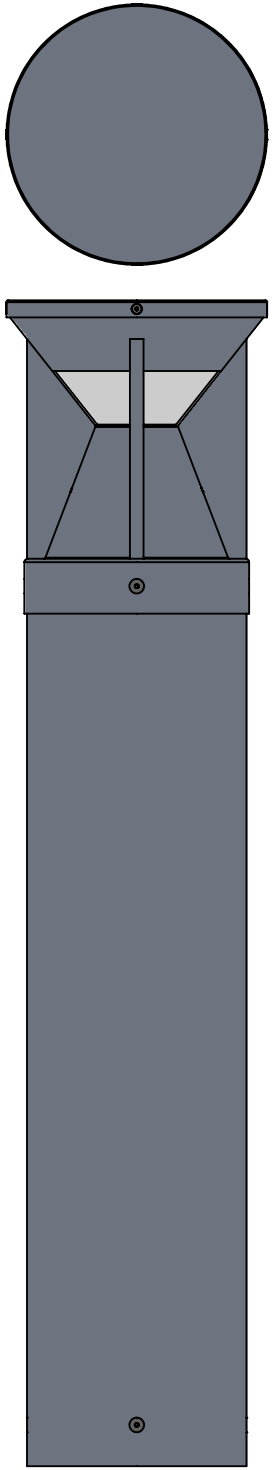
3

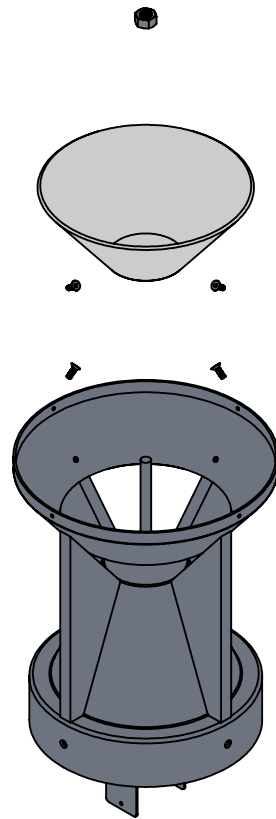
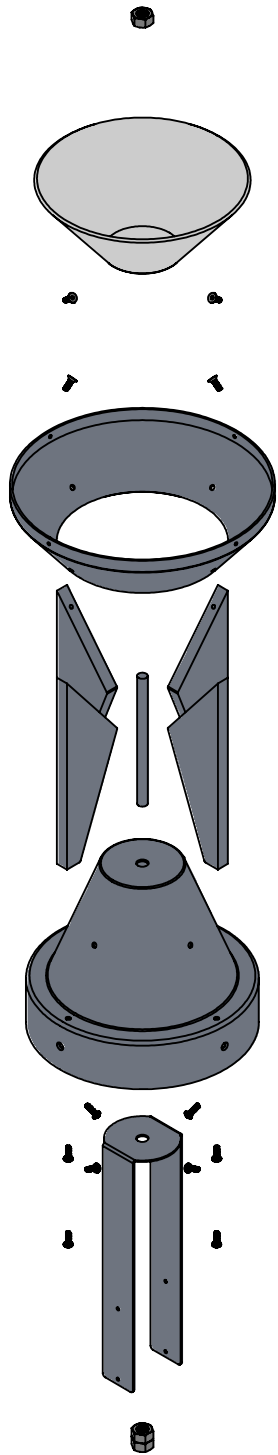
2

1

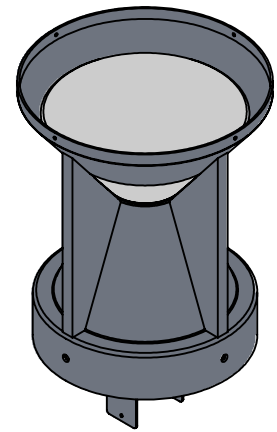
APPLICATION

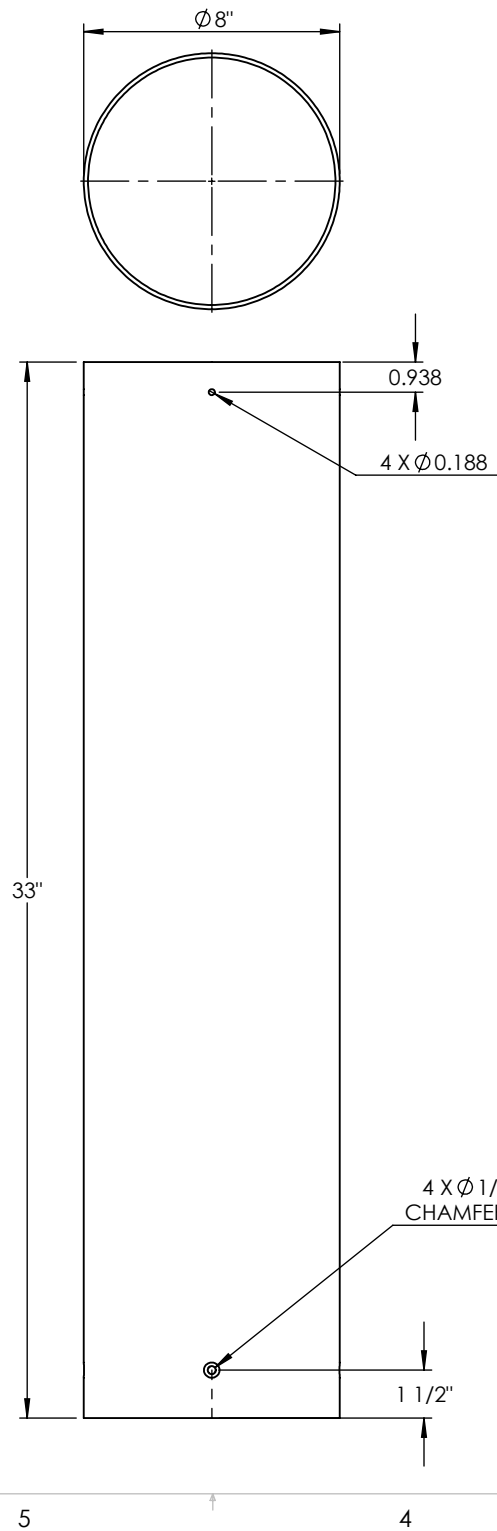
DO NOT SCALE DRAWING





SPINNING WELDED OR BOLTED TO FINS





|                                      |  |           |      |                                |            |         |
|--------------------------------------|--|-----------|------|--------------------------------|------------|---------|
| UNLESS OTHERWISE SPECIFIED:          |  | NAME      | DATE | 8" CYLINDER TUBE               |            |         |
| DIMENSIONS ARE IN INCHES             |  | DRAWN     |      |                                |            | TITLE:  |
| TOLERANCES:                          |  | CHECKED   |      | BOL-2CON-43-36L-DB-CFA-DIM-41K |            |         |
| FRACTIONAL ±                         |  | ENG APPR. |      | SIZE                           | DWG. NO.   | REV     |
| ANGULAR: MACH ± BEND ±               |  | MFG APPR. |      | <b>A</b>                       |            |         |
| TWO PLACE DECIMAL ±                  |  | Q.A.      |      |                                | SCALE: 1:6 | WEIGHT: |
| THREE PLACE DECIMAL ±                |  | COMMENTS: |      |                                |            |         |
| INTERPRET GEOMETRIC TOLERANCING PER: |  |           |      |                                |            |         |
| MATERIAL                             |  |           |      |                                |            |         |
| FINISH                               |  |           |      |                                |            |         |
| DO NOT SCALE DRAWING                 |  |           |      |                                |            |         |

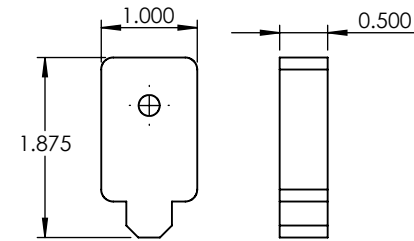
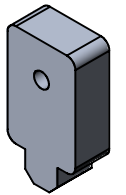
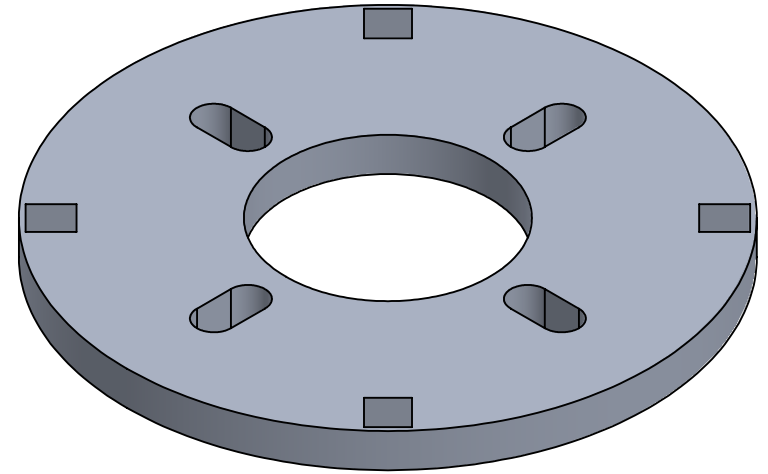
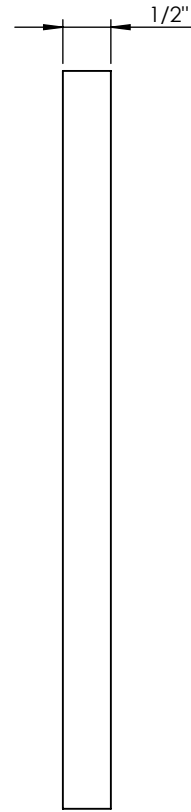
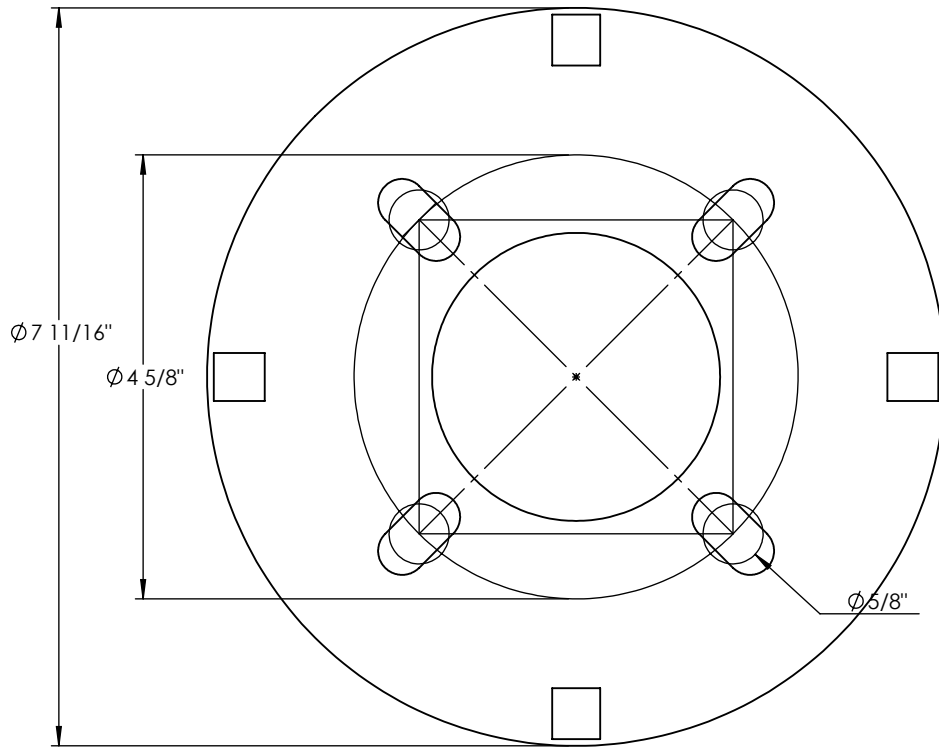
5

4

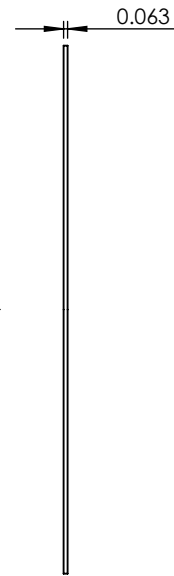
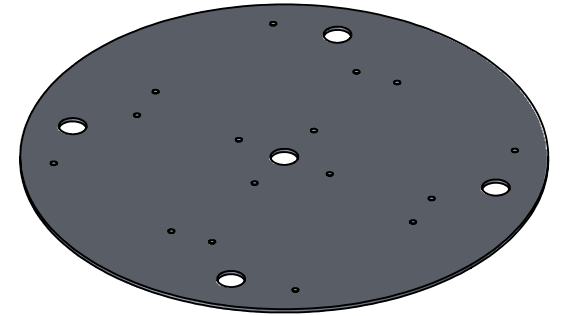
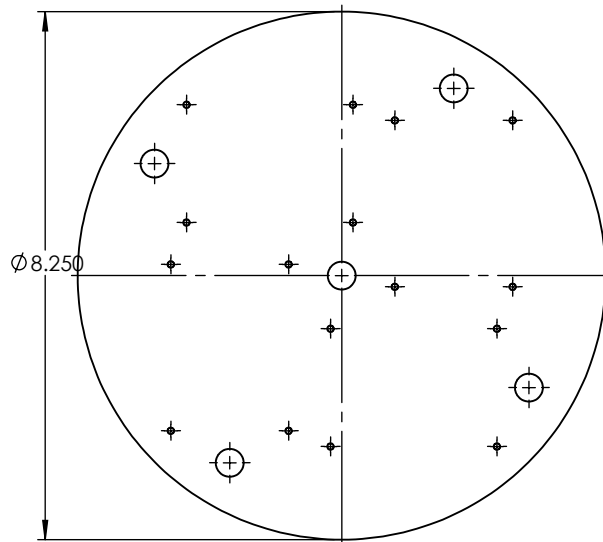
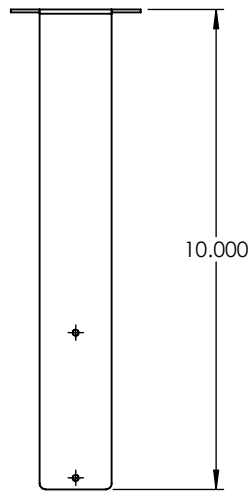
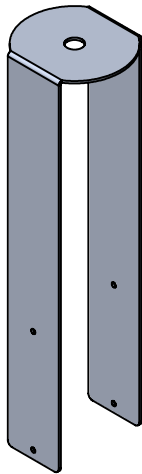
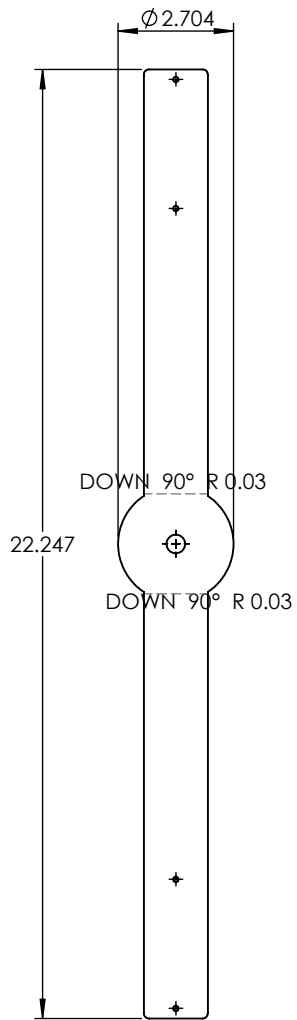
3

2

1



|             |         |                                      |   |      |                                |          |
|-------------|---------|--------------------------------------|---|------|--------------------------------|----------|
|             |         | UNLESS OTHERWISE SPECIFIED:          | NAME                                    | DATE | ALUMINUM 0.500" PLATE          |          |
|             |         | DIMENSIONS ARE IN INCHES             | DRAWN                                   |      | TITLE:                         |          |
|             |         | TOLERANCES:                          | CHECKED                                 |      | BOL-2CON-43-36L-DB-CFA-DIM-41K |          |
|             |         | FRACTIONAL $\pm$                     | ENG APPR.                               |      | SIZE                           | DWG. NO. |
|             |         | ANGULAR: MACH $\pm$ BEND $\pm$       | MFG APPR.                               |      | A                              | REV      |
|             |         | TWO PLACE DECIMAL $\pm$              | Q.A.                                    |      | SCALE: 1:2                     | WEIGHT:  |
|             |         | THREE PLACE DECIMAL $\pm$            | COMMENTS:                               |      | SHEET 5 OF 11                  |          |
|             |         | INTERPRET GEOMETRIC TOLERANCING PER: | <b>3/8" X 12" LONG ANCHOR BOLT SIZE</b> |      |                                |          |
|             |         | MATERIAL                             |   |      |                                |          |
| NEXT ASSY   | USED ON | FINISH                               |   |      |                                |          |
| APPLICATION |         | DO NOT SCALE DRAWING                 |   |      |                                |          |



**PROPRIETARY AND CONFIDENTIAL**  
 THE INFORMATION CONTAINED IN THIS DRAWING IS THE SOLE PROPERTY OF <INSERT COMPANY NAME HERE>. ANY REPRODUCTION IN PART OR AS A WHOLE WITHOUT THE WRITTEN PERMISSION OF <INSERT COMPANY NAME HERE> IS PROHIBITED.

|             |         |                                      |           |      |      |
|-------------|---------|--------------------------------------|-----------|------|------|
|             |         | UNLESS OTHERWISE SPECIFIED:          |           | NAME | DATE |
|             |         | DIMENSIONS ARE IN INCHES             | DRAWN     |      |      |
|             |         | TOLERANCES:                          | CHECKED   |      |      |
|             |         | FRACTIONAL $\pm$                     | ENG APPR. |      |      |
|             |         | ANGULAR: MACH $\pm$ BEND $\pm$       | MFG APPR. |      |      |
|             |         | TWO PLACE DECIMAL $\pm$              | Q.A.      |      |      |
|             |         | THREE PLACE DECIMAL $\pm$            | COMMENTS: |      |      |
|             |         | INTERPRET GEOMETRIC TOLERANCING PER: |           |      |      |
|             |         | MATERIAL                             |           |      |      |
| NEXT ASSY   | USED ON | FINISH                               |           |      |      |
| APPLICATION |         | DO NOT SCALE DRAWING                 |           |      |      |

ALUMINUM 0.0635"

TITLE:  
 BOL-2CON-43-36L-DB-CFA-DIM-41K

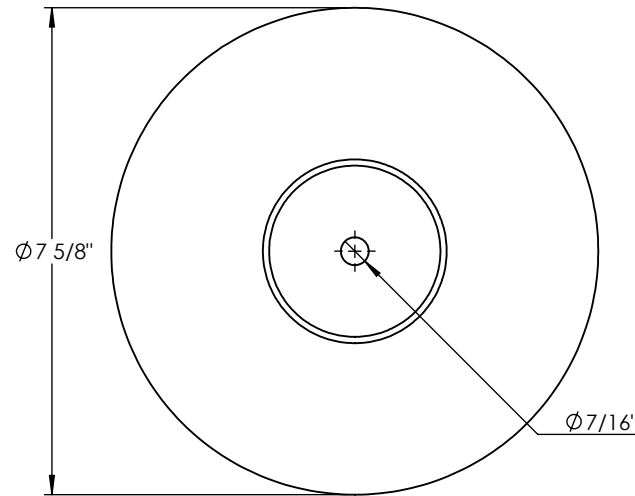
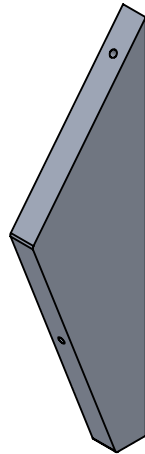
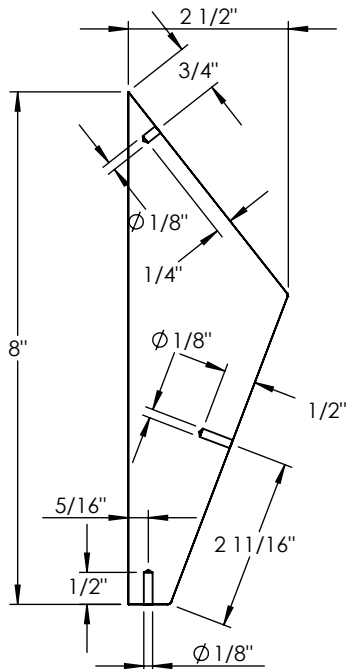
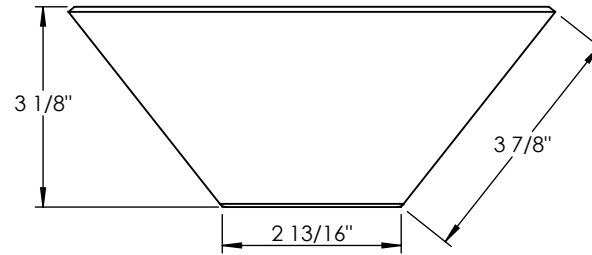
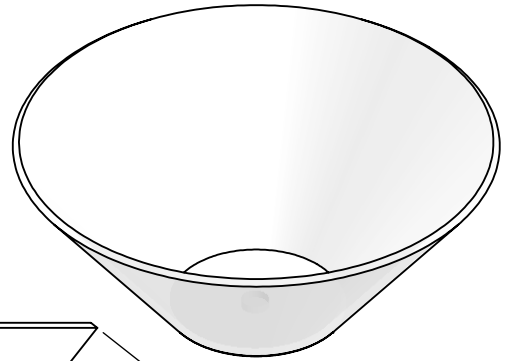
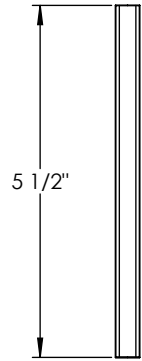
SIZE DWG. NO. REV  
**A**

SCALE: 1:3 WEIGHT: SHEET 6 OF 11

$\phi 3/8"$



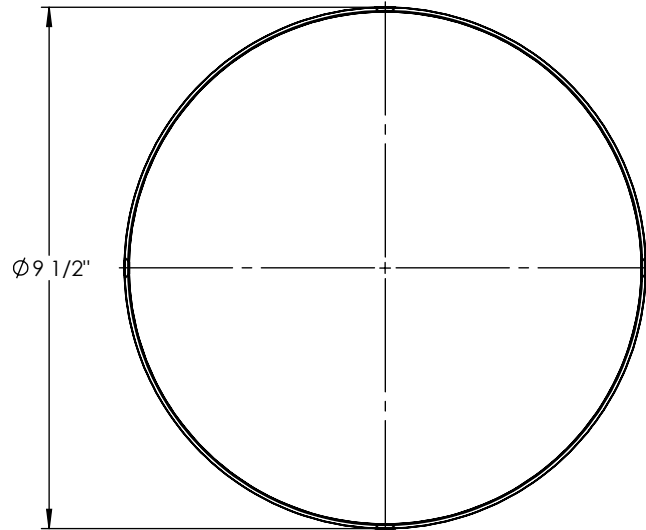
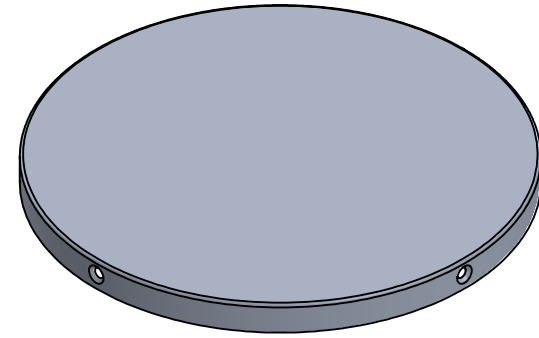
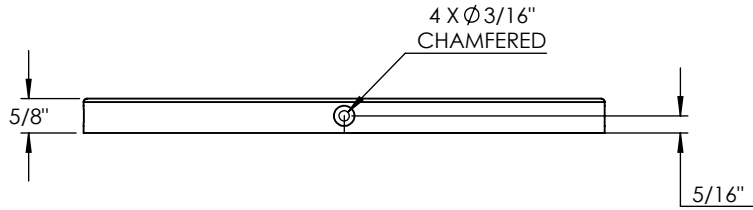
THREADED ROD



**PROPRIETARY AND CONFIDENTIAL**  
 THE INFORMATION CONTAINED IN THIS DRAWING IS THE SOLE PROPERTY OF <INSERT COMPANY NAME HERE>. ANY REPRODUCTION IN PART OR AS A WHOLE WITHOUT THE WRITTEN PERMISSION OF <INSERT COMPANY NAME HERE> IS PROHIBITED.

|             |         |   |           |      |      |                                |         |               |
|-------------|---------|---|-----------|------|------|--------------------------------|---------|---------------|
|             |         | UNLESS OTHERWISE SPECIFIED:   |           | NAME | DATE | ACRYLIC                        |         |               |
|             |         | DIMENSIONS ARE IN INCHES<br>TOLERANCES:<br>FRACTIONAL ±<br>ANGULAR: MACH ± BEND ±<br>TWO PLACE DECIMAL ±<br>THREE PLACE DECIMAL ± | DRAWN     |      |      |                                |         |               |
|             |         | INTERPRET GEOMETRIC TOLERANCING PER:  | CHECKED   |      |      | BOL-2CON-43-36L-DB-CFA-DIM-41K |         |               |
|             |         | MATERIAL  | ENG APPR. |      |      |                                |         |               |
| NEXT ASSY   | USED ON | FINISH  | MFG APPR. |      |      | <b>A</b>                       |         |               |
| APPLICATION |         | DO NOT SCALE DRAWING  | Q.A.      |      |      | SCALE: 1:3                     | WEIGHT: | SHEET 7 OF 11 |
|             |         |   | COMMENTS: |      |      |                                |         |               |

| ITEM NO. | PART NUMBER                                 | DESCRIPTION          | QTY. |
|----------|---|----------------------|------|
| 1        | BOL-2CON-43-36L-DB-CFA-DIM-41K-SPUN TOP CAP | SPUN ALUMINUM 0.080" | 1    |

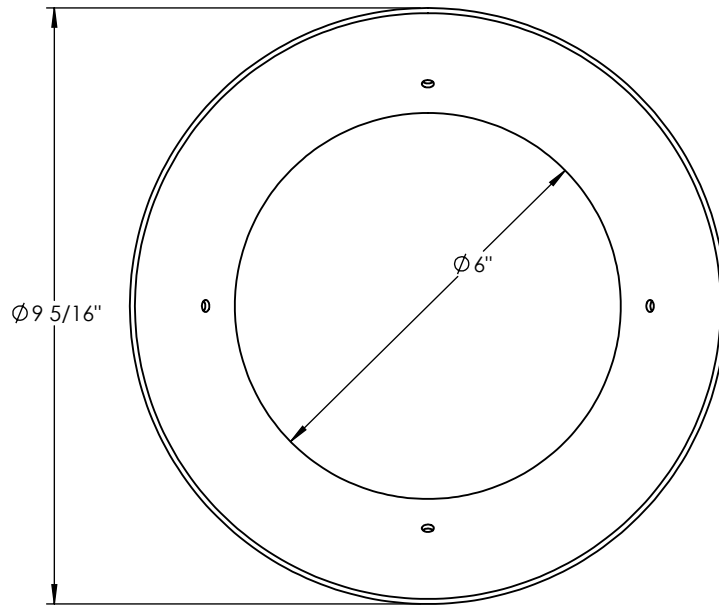
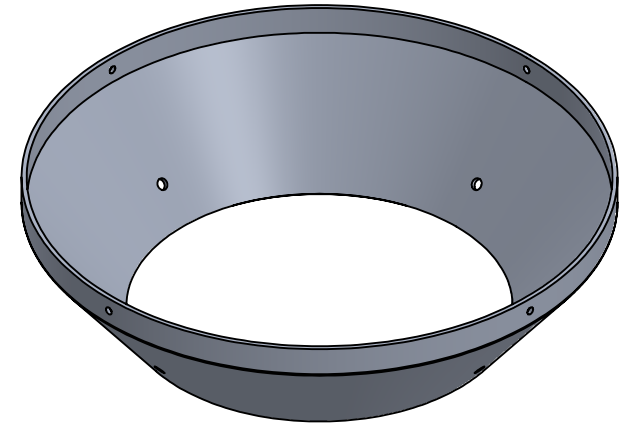
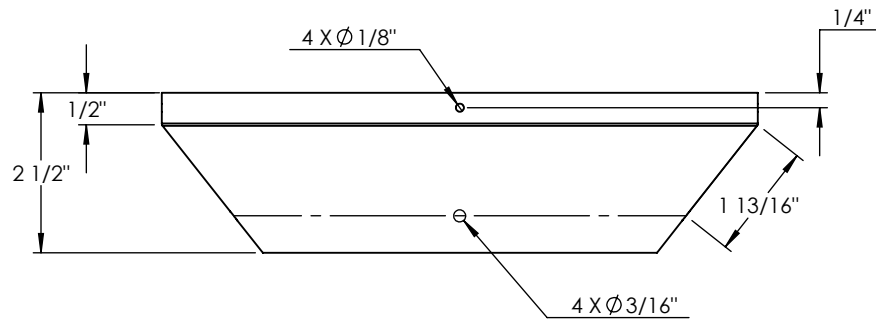


**PROPRIETARY AND CONFIDENTIAL**  
THE INFORMATION CONTAINED IN THIS DRAWING IS THE SOLE PROPERTY OF <INSERT COMPANY NAME HERE>. ANY REPRODUCTION IN PART OR AS A WHOLE WITHOUT THE WRITTEN PERMISSION OF <INSERT COMPANY NAME HERE> IS PROHIBITED.

|             |         |   |           |      |      |                                    |  |
|-------------|---------|---|-----------|------|------|------------------------------------|--|
|             |         | UNLESS OTHERWISE SPECIFIED:   |           | NAME | DATE | SPUN ALUMINUM 0.080"               |  |
|             |         | DIMENSIONS ARE IN INCHES<br>TOLERANCES:<br>FRACTIONAL $\pm$<br>ANGULAR: MACH $\pm$ BEND $\pm$<br>TWO PLACE DECIMAL $\pm$<br>THREE PLACE DECIMAL $\pm$ | DRAWN     |      |      | TITLE:                             |  |
|             |         | INTERPRET GEOMETRIC<br>TOLERANCING PER:   | CHECKED   |      |      | BOL-2CON-43-36L-DB-CFA-DIM-41K     |  |
|             |         | MATERIAL  | ENG APPR. |      |      | SIZE DWG. NO. REV                  |  |
| NEXT ASSY   | USED ON | FINISH  | MFG APPR. |      |      | SCALE: 1:3.5 WEIGHT: SHEET 8 OF 11 |  |
| APPLICATION |         | DO NOT SCALE DRAWING  | Q.A.      |      |      |                                    |  |
|             |         |   | COMMENTS: |      |      |                                    |  |



| ITEM NO. | PART NUMBER                                   | DESCRIPTION          | QTY. |
|----------|---|----------------------|------|
| 1        | BOL-2CON-43-36L-DB-CFA-DIM-41K-SPUN CONE HEAD | SPUN ALUMINUM 0.080" | 1    |



|   |             |         |   |           |      |      |                                |          |         |
|---|-------------|---------|---|-----------|------|------|--------------------------------|----------|---------|
| <p><b>PROPRIETARY AND CONFIDENTIAL</b><br/>THE INFORMATION CONTAINED IN THIS DRAWING IS THE SOLE PROPERTY OF &lt;INSERT COMPANY NAME HERE&gt;. ANY REPRODUCTION IN PART OR AS A WHOLE WITHOUT THE WRITTEN PERMISSION OF &lt;INSERT COMPANY NAME HERE&gt; IS PROHIBITED.</p> |             |         | UNLESS OTHERWISE SPECIFIED:   |           | NAME | DATE | SPUN ALUMINUM 0.080"           |          |         |
|   |             |         | DIMENSIONS ARE IN INCHES<br>TOLERANCES:<br>FRACTIONAL ±<br>ANGULAR: MACH ± BEND ±<br>TWO PLACE DECIMAL ±<br>THREE PLACE DECIMAL ± | DRAWN     |      |      | TITLE:                         |          |         |
|   |             |         | INTERPRET GEOMETRIC<br>TOLERANCING PER:   | CHECKED   |      |      | BOL-2CON-43-36L-DB-CFA-DIM-41K |          |         |
|   |             |         | MATERIAL  | ENG APPR. |      |      | SIZE                           | DWG. NO. | REV     |
|   |             |         | FINISH  | MFG APPR. |      |      | SCALE: 1:3.5                   |          | WEIGHT: |
|   | NEXT ASSY   | USED ON | COMMENTS:   | Q.A.      |      |      |                                |          |         |
|   | APPLICATION |         | DO NOT SCALE DRAWING  |           |      |      |                                |          |         |

5

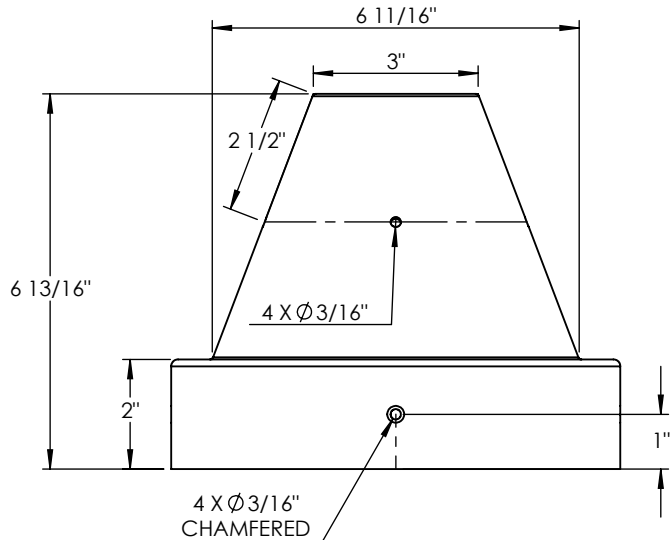
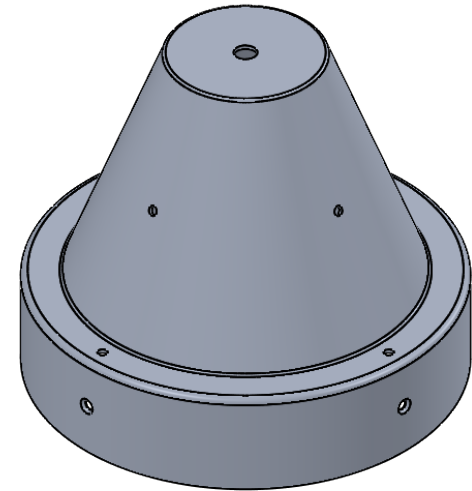
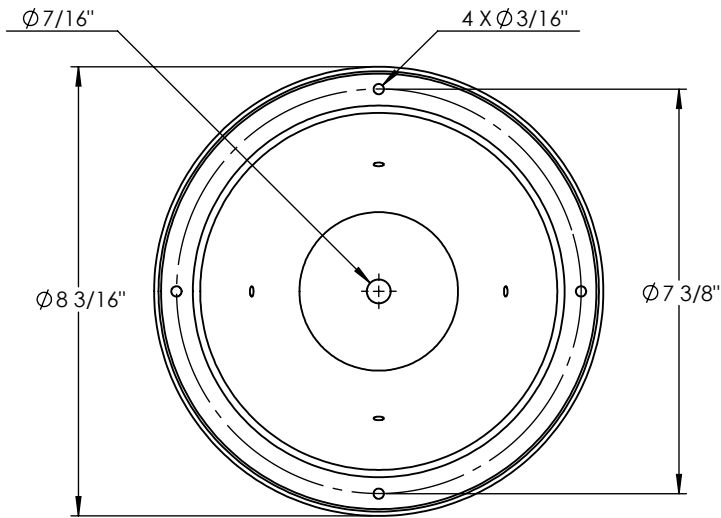
4

3

2

1

| ITEM NO. | PART NUMBER                              | DESCRIPTION          | QTY. |
|----------|--|----------------------|------|
| 1        | BOL-2CON-43-36L-DB-CFA-DIM-41K-SPUN CONE | SPUN ALUMINUM 0.080" | 1    |



|                                      |  |           |      |                                     |  |
|--------------------------------------|--|-----------|------|-------------------------------------|--|
| UNLESS OTHERWISE SPECIFIED:          |  | NAME      | DATE | SPUN ALUMINUM 0.080"                |  |
| DIMENSIONS ARE IN INCHES             |  | DRAWN     |      | TITLE:                              |  |
| TOLERANCES:                          |  | CHECKED   |      | BOL-2CON-43-36L-DB-CFA-DIM-41K      |  |
| FRACTIONAL $\pm$                     |  | ENG APPR. |      | SIZE DWG. NO. REV                   |  |
| ANGULAR: MACH $\pm$ BEND $\pm$       |  | MFG APPR. |      | SCALE: 1:3.5 WEIGHT: SHEET 10 OF 11 |  |
| TWO PLACE DECIMAL $\pm$              |  | Q.A.      |      |                                     |  |
| THREE PLACE DECIMAL $\pm$            |  | COMMENTS: |      |                                     |  |
| INTERPRET GEOMETRIC TOLERANCING PER: |  |           |      |                                     |  |
| MATERIAL                             |  |           |      |                                     |  |
| FINISH                               |  |           |      |                                     |  |
| APPLICATION                          |  |           |      |                                     |  |
| DO NOT SCALE DRAWING                 |  |           |      |                                     |  |

**PROPRIETARY AND CONFIDENTIAL**  
 THE INFORMATION CONTAINED IN THIS DRAWING IS THE SOLE PROPERTY OF <INSERT COMPANY NAME HERE>. ANY REPRODUCTION IN PART OR AS A WHOLE WITHOUT THE WRITTEN PERMISSION OF <INSERT COMPANY NAME HERE> IS PROHIBITED.

|             |         |
|-------------|---------|
| NEXT ASSY   | USED ON |
| APPLICATION |         |

$\Phi 7 \frac{11}{16}$ "

$\Phi 4 \frac{5}{8}$ "

$3 \frac{1}{4}$ "

$3 \frac{1}{4}$ "

$\Phi 3$ "

$\Phi 1 \frac{1}{2}$ "

**$\frac{3}{8}$ " X 12" LONG  
ANCHOR BOLT SIZE**

