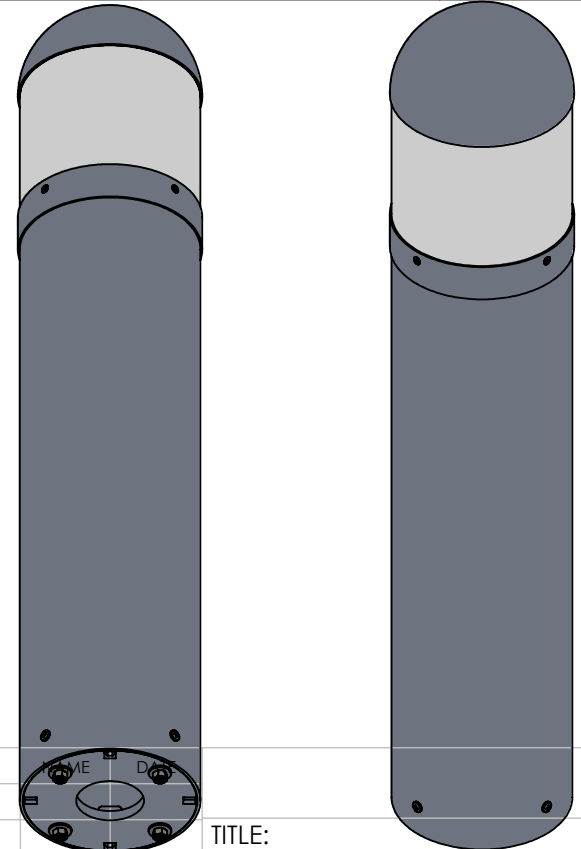


ITEM NO.	PART NUMBER	DESCRIPTION	QTY.	CUT
1	BOL-DN-VFNS-16LED-9RAL6004-CA-40K-CYLINDER TUBE	8" CYLINDER TUBE	1	
2	BOL-DN-VFNS-16LED-9RAL6004-CA-40K-ANCHOR PLATE	ALUMINUM 0.500" PLATE	1	
3	BOL-DN-VFNS-16LED-9RAL6004-CA-40K-ANCHOR PLATE TAB	ALUMINUM 0.500" PLATE	4	
4	BOL-DN-VFNS-16LED-9RAL6004-CA-40K-SPUN CONE SEAT	SPUN ALUMINUM 0.080"	1	
5	BOL-DN-VFNS-16LED-9RAL6004-CA-40K-TUBE FLANGE	ALUMINUM 0.500" PLATE	1	
6	BOL-DN-VFNS-16LED-9RAL6004-CA-40K-VERTICAL FIN	ALUMINUM 0.500" PLATE	4	
7	BOL-DN-VFNS-16LED-9RAL6004-CA-40K-CAP MOUNT PLATE	ALUMINUM 0.500" PLATE	1	
8	BOL-DN-VFNS-16LED-9RAL6004-CA-40K-LED PLATE	ALUMINUM 0.125" PLATE	1	
9	BOL-DN-VFNS-16LED-9RAL6004-CA-40K-SPHERE MOUNT PLATE	ALUMINUM 0.125" PLATE	1	
10	BOL-DN-VFNS-16LED-9RAL6004-CA-40K-CONE SPACER	ALUMINUM 0.500" PLATE	2	
11	BOL-DN-VFNS-16LED-9RAL6004-CA-40K-SPUN TOP CAP	SPUN ALUMINUM 0.080"	1	
12	BOL-DN-VFNS-16LED-9RAL6004-CA-40K-TUBE SLEEVE	SPUN ALUMINUM 0.080"	1	
13	BOL-DN-VFNS-16LED-TBR-CA-30K-SPUN CONE	SPUN ALUMINUM 0.080"	1	
14	BOL-DN-VFNS-16LED-9RAL6004-CA-40K-DRIVER BRACKET	ALUMINUM 0.0635"	1	
15	BOL-DN-VFNS-16LED-9RAL6004-CA-40K-0.375" ROUND TUBE	3/8" THREADED ROD	1	
16	BOL-DN-VFNS-16LED-9RAL6004-CA-40K-ACRYLIC TUBE	ACRYLIC	1	
17	BOL-DN-VFNS-16LED-9RAL6004-CA-40K-ACRYLIC SLEEVE	ACRYLIC	1	
18	8-32-0.5 SS Hex Drive Flat Head	8-32 FLAT HEAD SCREW	4	
19	43 MM HEAT SINK	HEAT SINK	4	
20	Espen VEL19070MVH-1	DRIVER	2	
21	AltalLED PCN D1000_105B	LED	4	



UNLESS OTHERWISE SPECIFIED:
 DIMENSIONS ARE IN INCHES
 TOLERANCES:
 FRACTIONAL ± .003
 ANGULAR: MACH ± .01 BEND ±
 TWO PLACE DECIMAL ±
 THREE PLACE DECIMAL ± .001

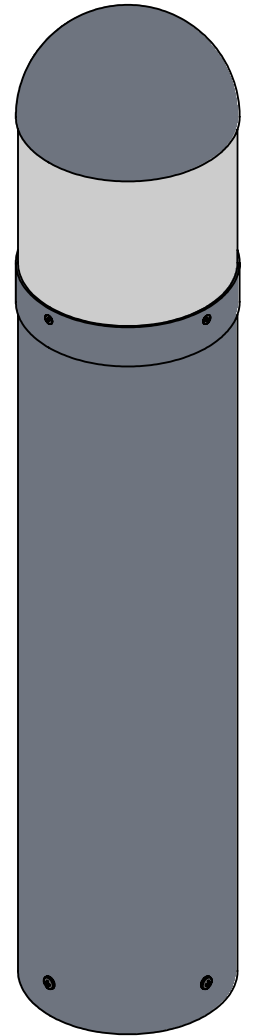
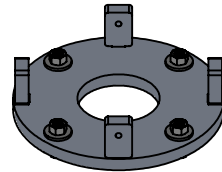
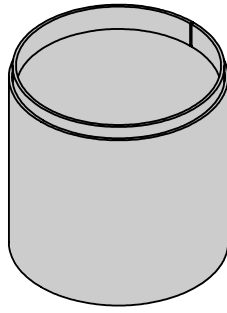
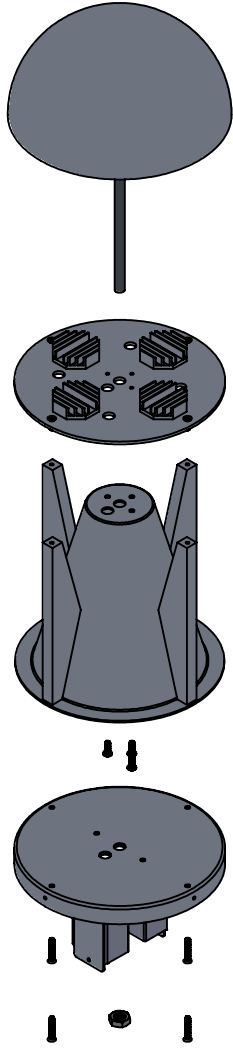
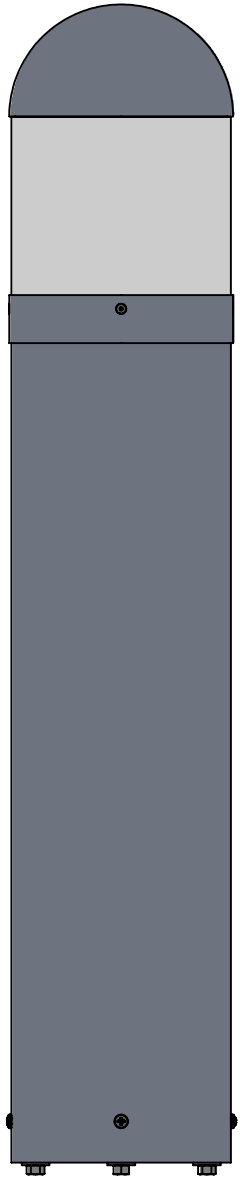
INTERPRET GEOMETRIC TOLERANCING PER:
 MATERIAL
 FINISH

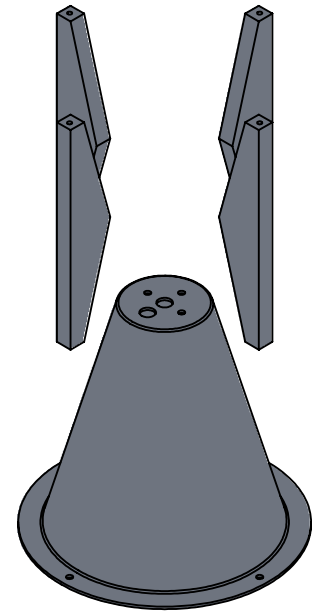
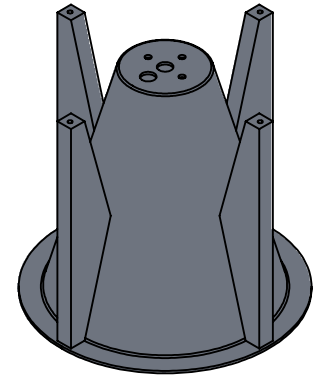
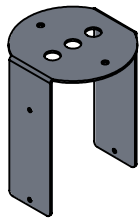
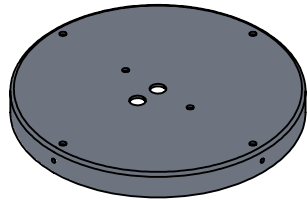
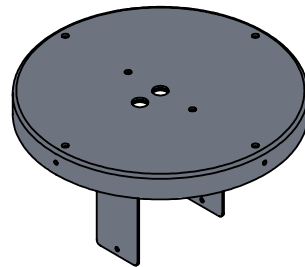
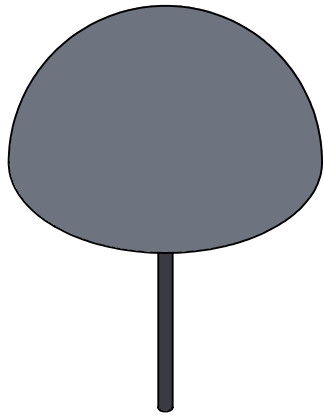
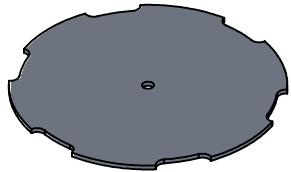
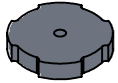
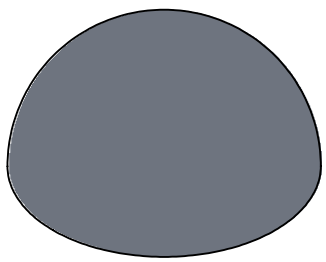
DRAWN
 CHECKED
 ENG APPR.
 MFG APPR.
 Q.A.
 COMMENTS:

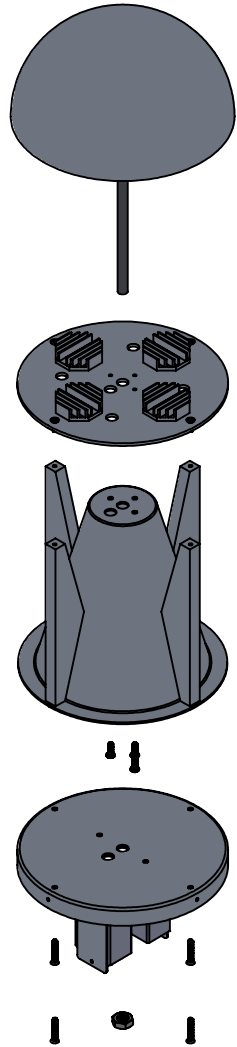
TITLE:
BOL-DN-VFNS-16LED-9RAL6004-CA-40K

SIZE DWG. NO. REV
A TICKET 27125
 SCALE: 1:9 WEIGHT: SHEET 1 OF 13

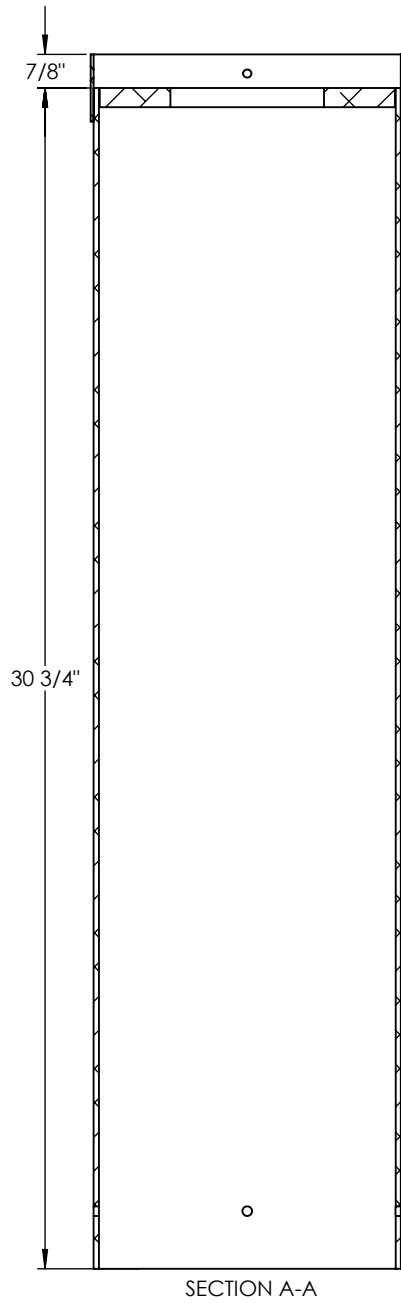
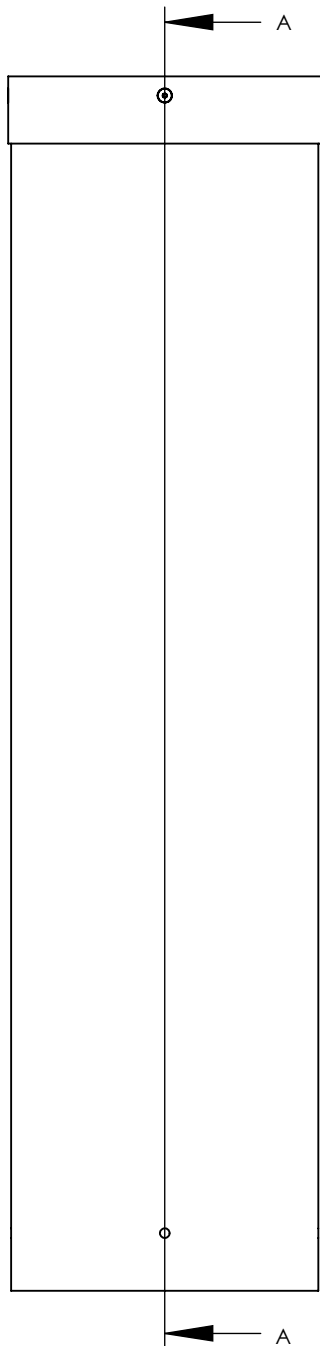
ALL BEND RADIUS .030"
 APPLICATION DO NOT SCALE DRAWING





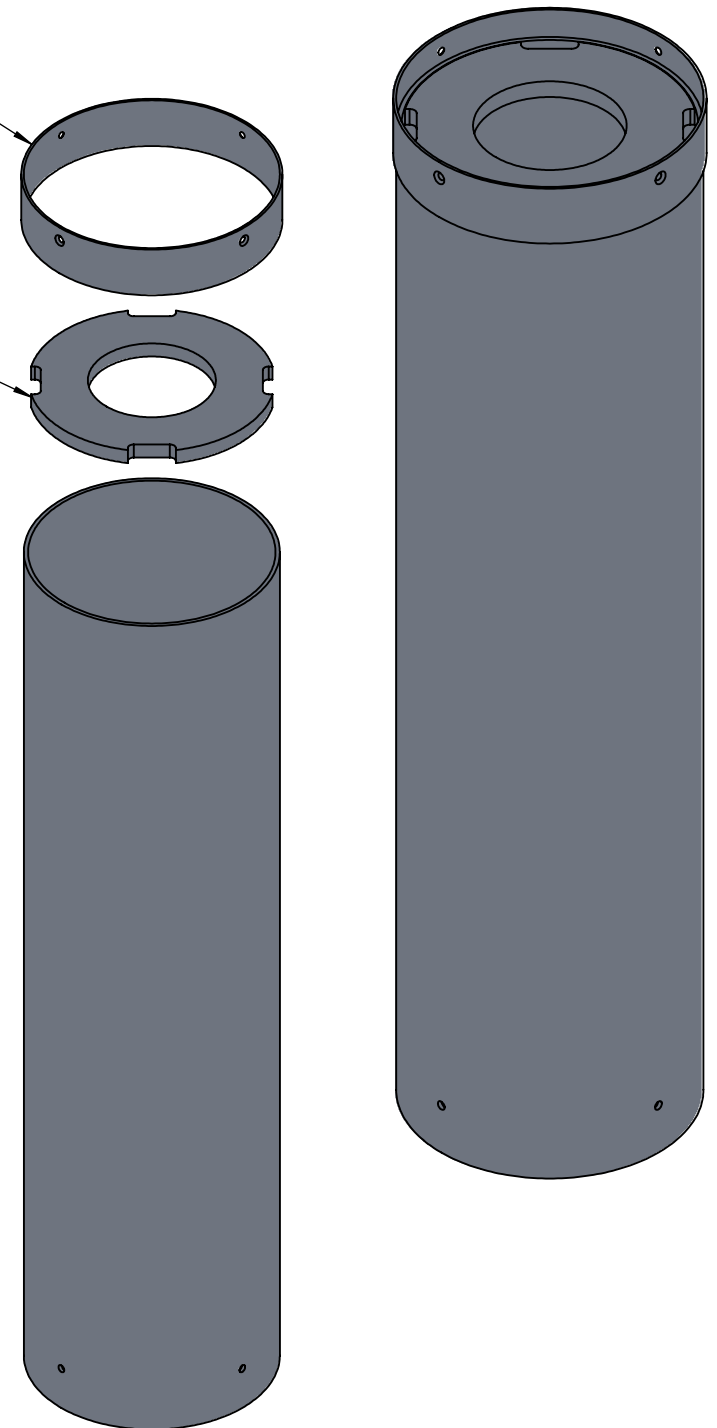


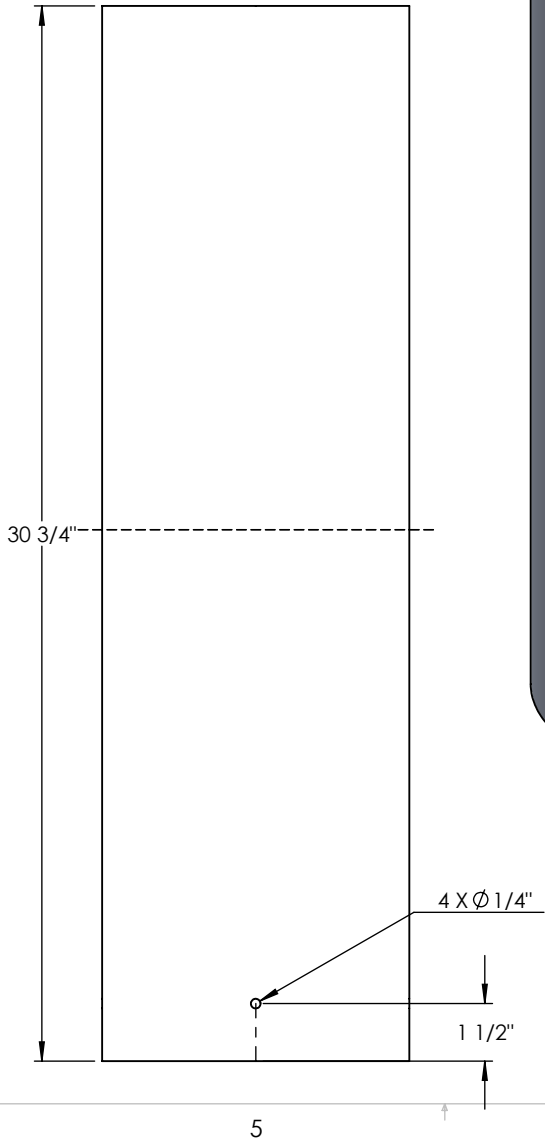
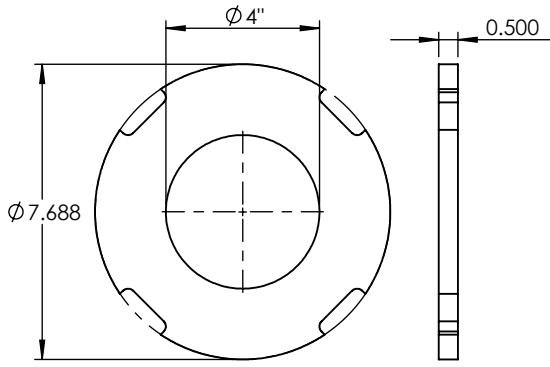
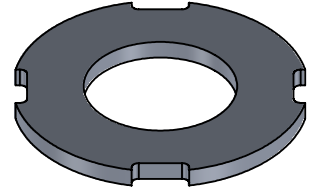
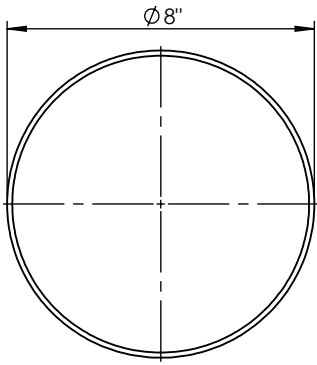
- ALL MEASUREMENTS FROM TOP RIM OF CYLINDER



0.875" INCHES
FROM CYLINDER

FLUSH TO
CYLINDER TOP





UNLESS OTHERWISE SPECIFIED:		NAME	DATE	8" CYLINDER TUBE	
DIMENSIONS ARE IN INCHES		DRAWN			
TOLERANCES:		CHECKED		BOL-DN-VFNS-16LED-9RAL6004-CA-40K	
FRACTIONAL \pm		ENG APPR.			
ANGULAR: MACH \pm BEND \pm		MFG APPR.			
TWO PLACE DECIMAL \pm		Q.A.		SIZE	DWG. NO.
THREE PLACE DECIMAL \pm		COMMENTS:		A	REV
INTERPRET GEOMETRIC TOLERANCING PER:				SCALE: 1:5	WEIGHT:
MATERIAL				SHEET 6 OF 13	
FINISH					
DO NOT SCALE DRAWING					

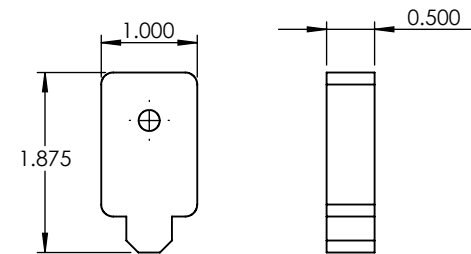
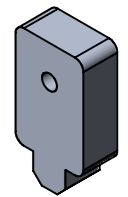
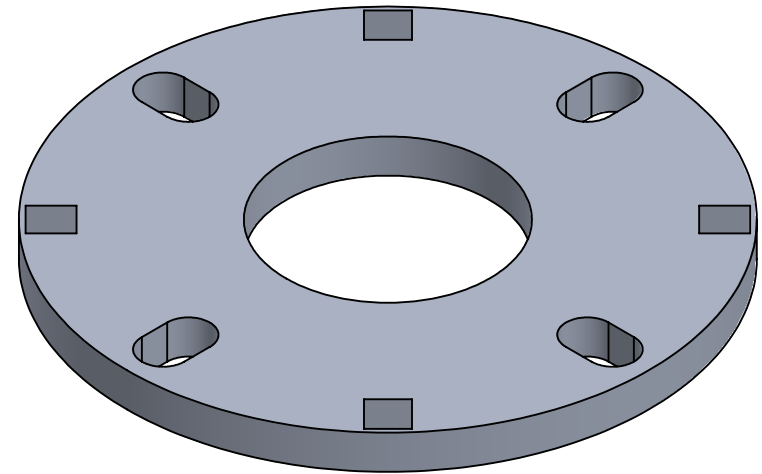
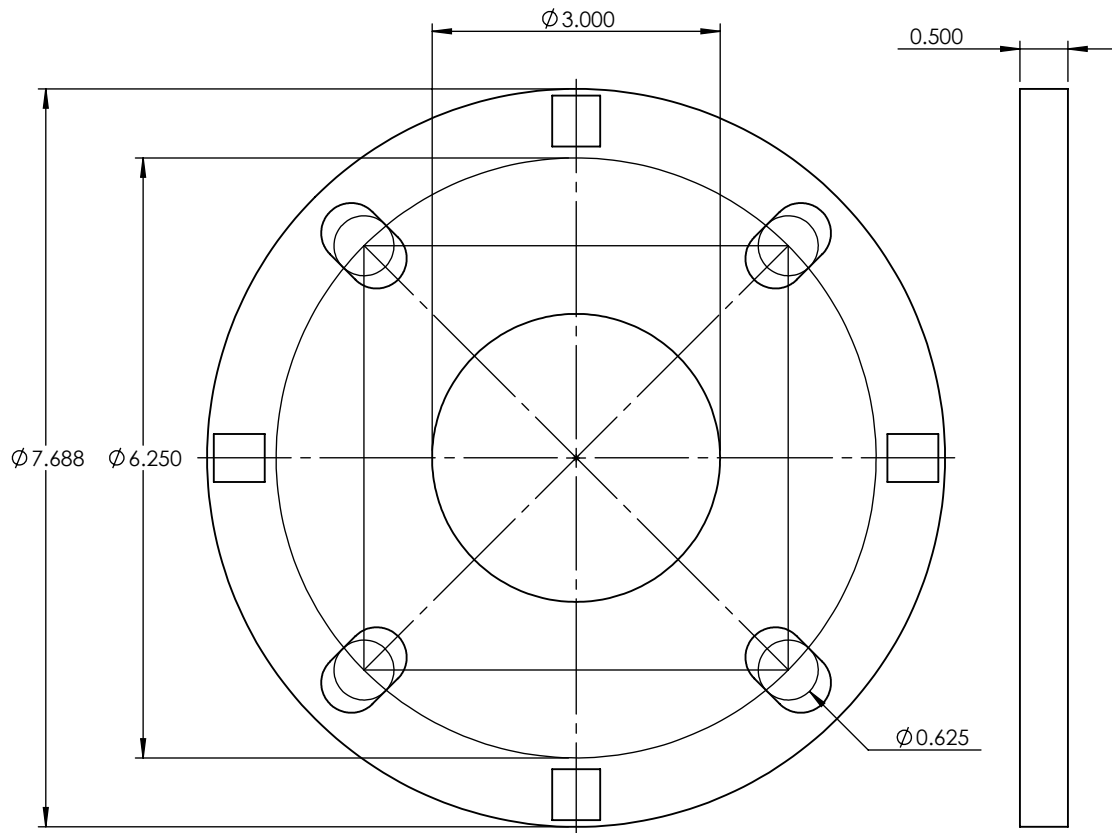
5

4

3

2

1



		UNLESS OTHERWISE SPECIFIED:		NAME	DATE	ALUMINUM 0.500" PLATE	
		DIMENSIONS ARE IN INCHES TOLERANCES: FRACTIONAL ± ANGULAR: MACH ± BEND ± TWO PLACE DECIMAL ± THREE PLACE DECIMAL ±		DRAWN		TITLE:	
		INTERPRET GEOMETRIC TOLERANCING PER:		CHECKED		BOL-DN-VFNS-16LED-9RAL6004-CA-40K	
		MATERIAL		ENG APPR.		SIZE	DWG. NO.
		FINISH		MFG APPR.		A	REV
NEXT ASSY	USED ON			Q.A.			SCALE: 1:2
APPLICATION		DO NOT SCALE DRAWING		COMMENTS:			SHEET 7 OF 13
				3/8" X 12" LONG ANCHOR BOLT SIZE			

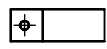
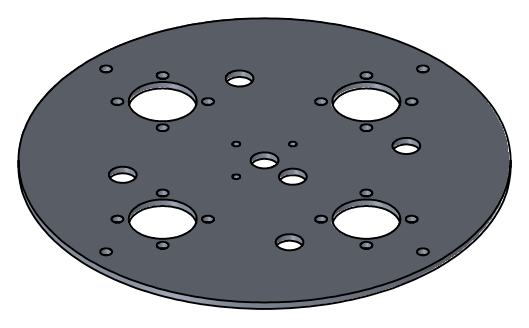
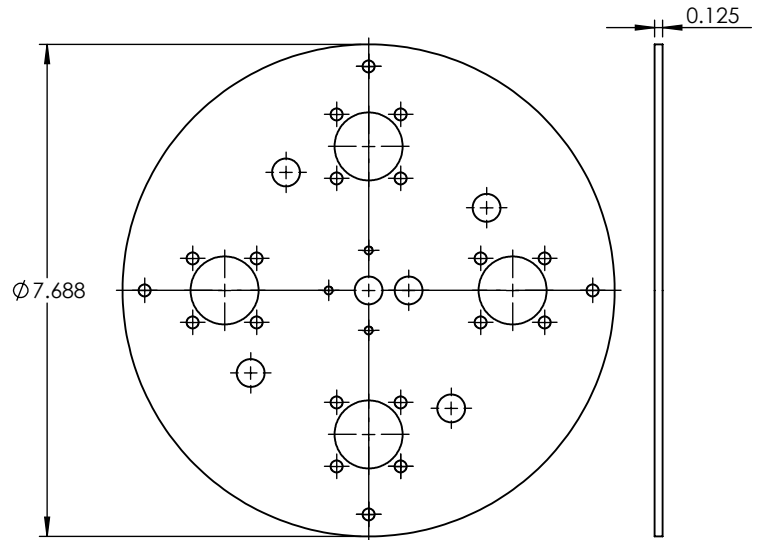
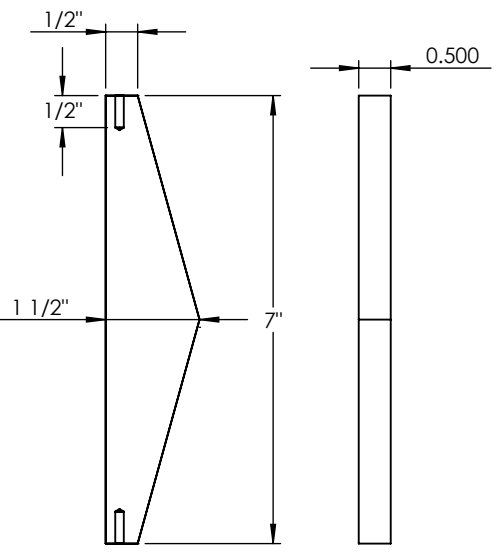
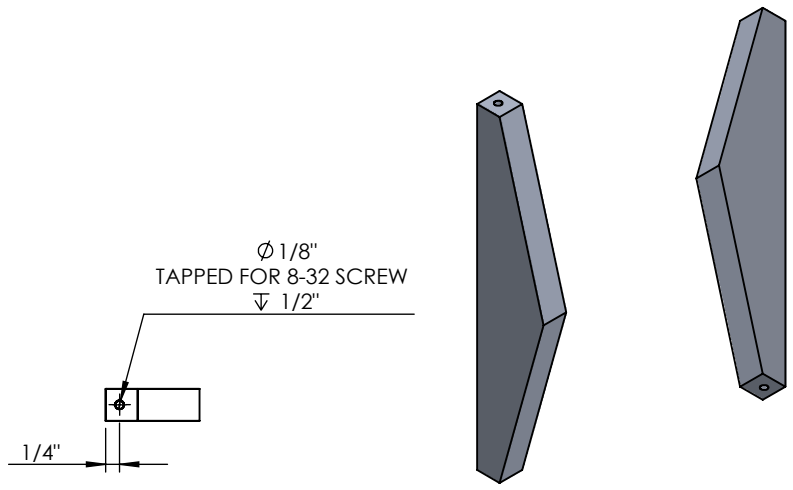
5

4

3

2

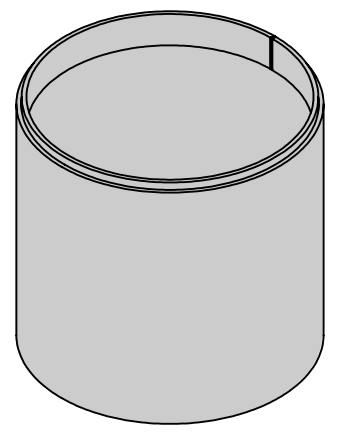
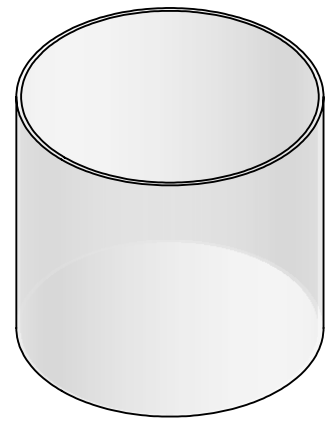
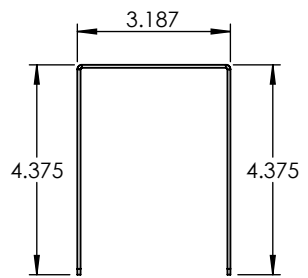
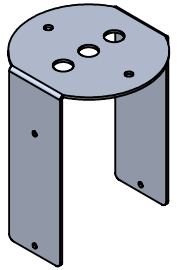
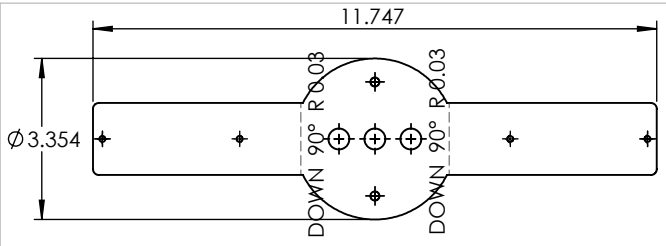
1



PROPRIETARY AND CONFIDENTIAL
 THE INFORMATION CONTAINED IN THIS DRAWING IS THE SOLE PROPERTY OF <INSERT COMPANY NAME HERE>. ANY REPRODUCTION IN PART OR AS A WHOLE WITHOUT THE WRITTEN PERMISSION OF <INSERT COMPANY NAME HERE> IS PROHIBITED.

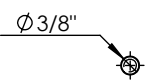
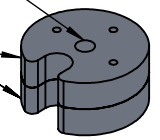
		UNLESS OTHERWISE SPECIFIED:		NAME	DATE
		DIMENSIONS ARE IN INCHES	DRAWN		
		TOLERANCES:	CHECKED		
		FRACTIONAL ±	ENG APPR.		
		ANGULAR: MACH ± BEND ±	MFG APPR.		
		TWO PLACE DECIMAL ±	Q.A.		
		THREE PLACE DECIMAL ±	COMMENTS:		
		INTERPRET GEOMETRIC TOLERANCING PER:			
		MATERIAL			
		FINISH			
NEXT ASSY	USED ON				
APPLICATION	DO NOT SCALE DRAWING				

ALUMINUM 0.500" PLATE		
TITLE:		
BOL-DN-VFNS-16LED-9RAL6004-CA-40K		
SIZE	DWG. NO.	REV
A		
SCALE: 1:3	WEIGHT:	SHEET 8 OF 13

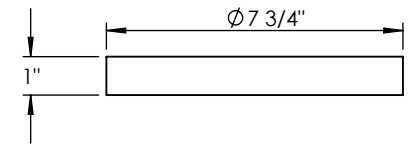
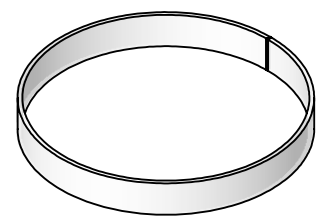
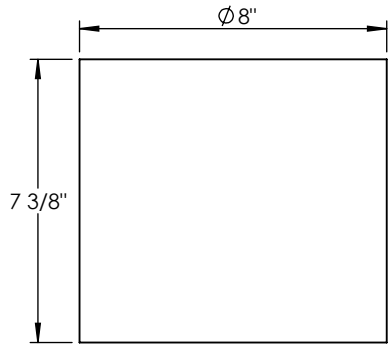
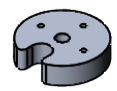
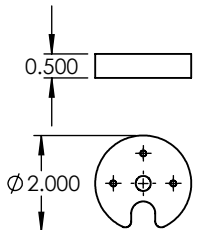


TAPPED FOR 3/8" THREADED ROD

2 BRACKETS STACKED AND WELDED TOGETHER



THREADED ROD



PROPRIETARY AND CONFIDENTIAL
 THE INFORMATION CONTAINED IN THIS DRAWING IS THE SOLE PROPERTY OF <INSERT COMPANY NAME HERE>. ANY REPRODUCTION IN PART OR AS A WHOLE WITHOUT THE WRITTEN PERMISSION OF <INSERT COMPANY NAME HERE> IS PROHIBITED.

		UNLESS OTHERWISE SPECIFIED:		NAME	DATE
		DIMENSIONS ARE IN INCHES	DRAWN		
		TOLERANCES:	CHECKED		
		FRACTIONAL ±	ENG APPR.		
		ANGULAR: MACH ± BEND ±	MFG APPR.		
		TWO PLACE DECIMAL ±	Q.A.		
		THREE PLACE DECIMAL ±	COMMENTS:		
		INTERPRET GEOMETRIC TOLERANCING PER:			
		MATERIAL			
		FINISH			
NEXT ASSY	USED ON				
APPLICATION	DO NOT SCALE DRAWING				

ALUMINUM 0.0635"

TITLE:
 BOL-DN-VFNS-16LED-9RAL6004-CA-40K

SIZE	DWG. NO.	REV
A		
SCALE: 1:4	WEIGHT:	SHEET 9 OF 13

5

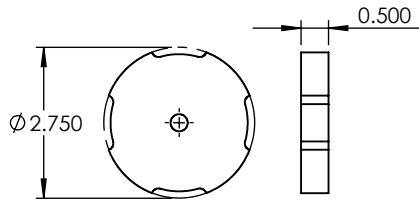
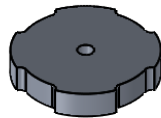
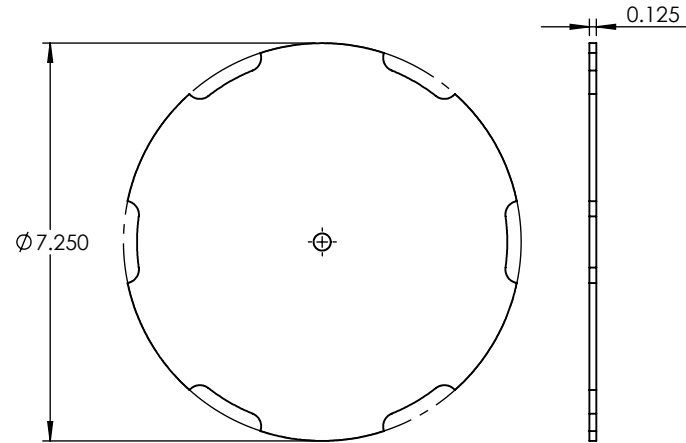
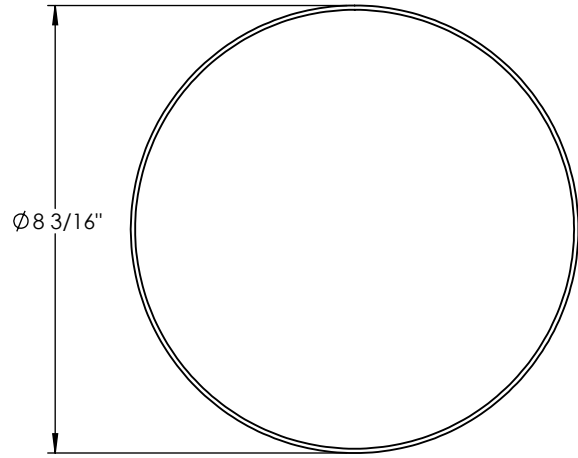
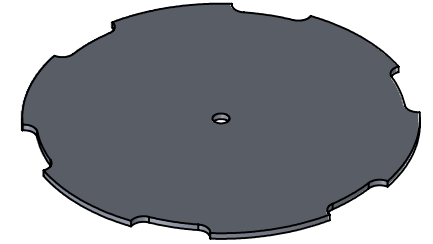
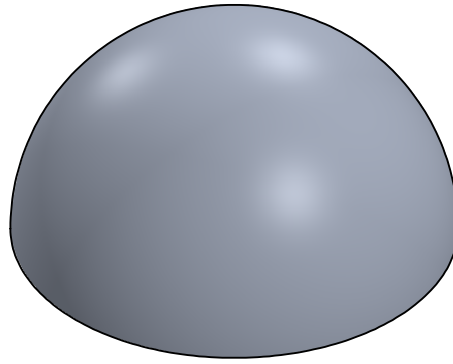
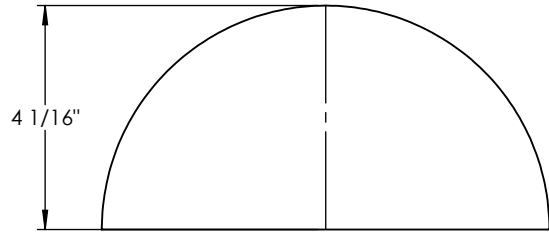
4

3

2

1

ITEM NO.	PART NUMBER	DESCRIPTION	QTY.
1	BOL-DN-VFNS-16LED-9RAL6004-CA-40K-SPUN TOP CAP	SPUN ALUMINUM 0.080"	1



UNLESS OTHERWISE SPECIFIED:

DIMENSIONS ARE IN INCHES
 TOLERANCES:
 FRACTIONAL ±
 ANGULAR: MACH ± BEND ±
 TWO PLACE DECIMAL ±
 THREE PLACE DECIMAL ±

INTERPRET GEOMETRIC
 TOLERANCING PER:

MATERIAL

FINISH

DO NOT SCALE DRAWING

NAME	DATE
DRAWN	
CHECKED	
ENG APPR.	
MFG APPR.	
Q.A.	

SPUN ALUMINUM 0.080"

TITLE:

BOL-DN-VFNS-16LED-9RAL6004-CA-40K

COMMENTS:

SIZE DWG. NO. REV

A

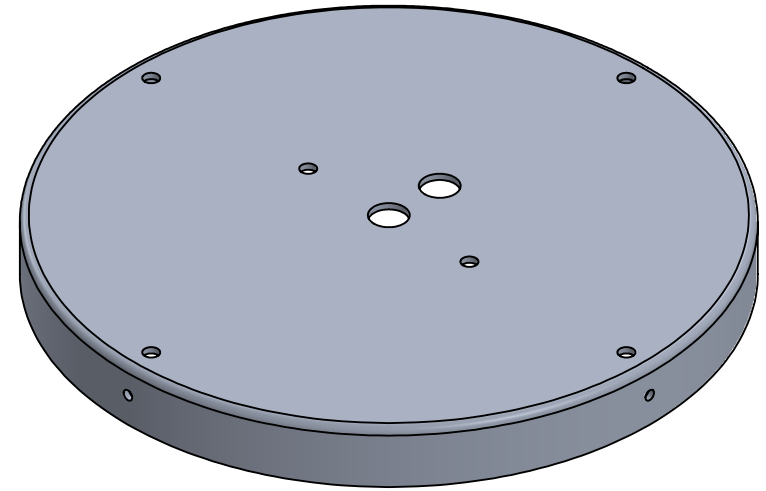
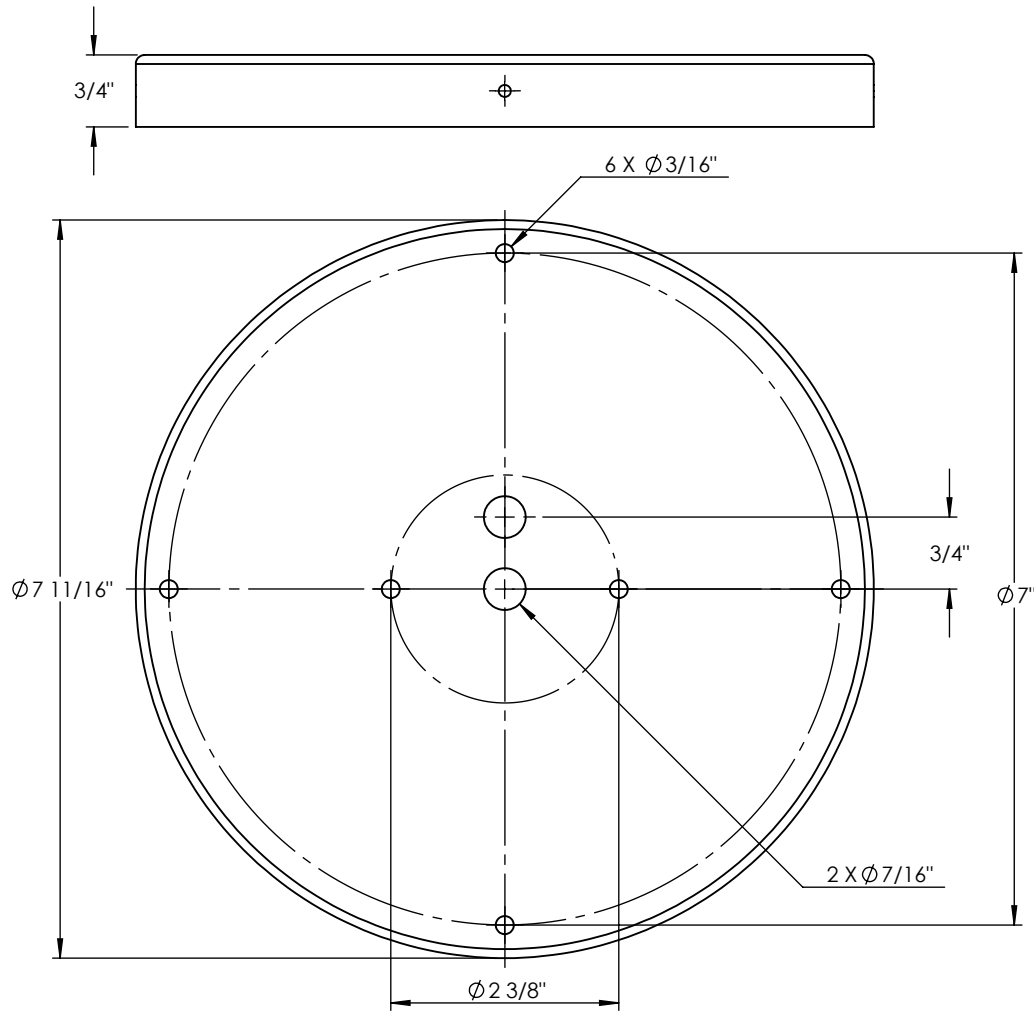
SCALE: 1:3.5 WEIGHT:

SHEET 10 OF 13

PROPRIETARY AND CONFIDENTIAL
 THE INFORMATION CONTAINED IN THIS
 DRAWING IS THE SOLE PROPERTY OF
 <INSERT COMPANY NAME HERE>. ANY
 REPRODUCTION IN PART OR AS A WHOLE
 WITHOUT THE WRITTEN PERMISSION OF
 <INSERT COMPANY NAME HERE> IS
 PROHIBITED.

NEXT ASSY	USED ON	APPLICATION

ITEM NO.	PART NUMBER	DESCRIPTION	QTY.
1	BOL-DN-VFNS-16LED-9RAL6004-CA-40K-SPUN CONE SEAT	SPUN ALUMINUM 0.080"	1

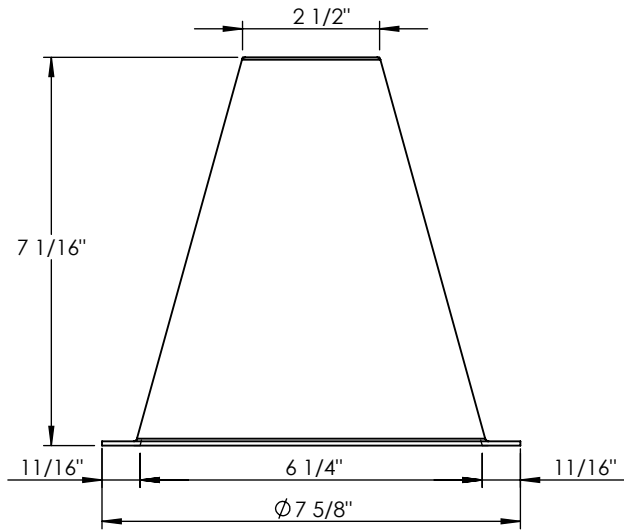
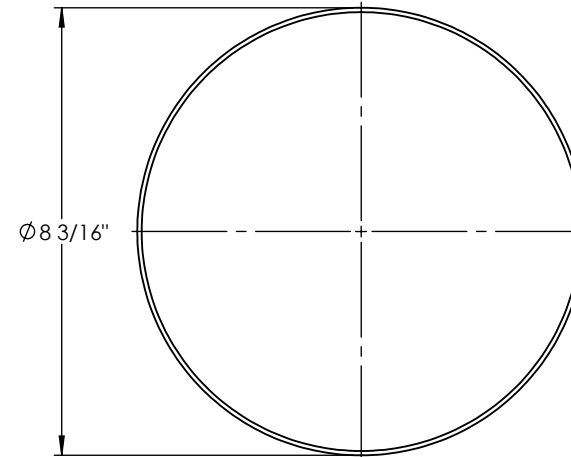
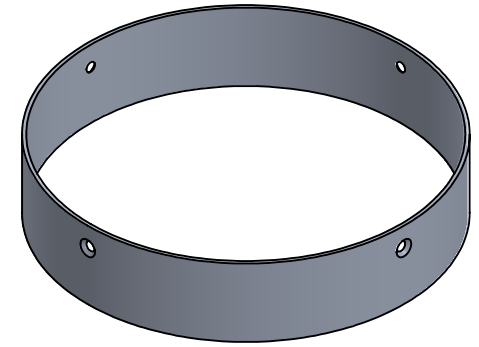
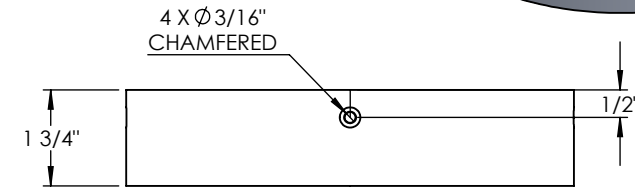
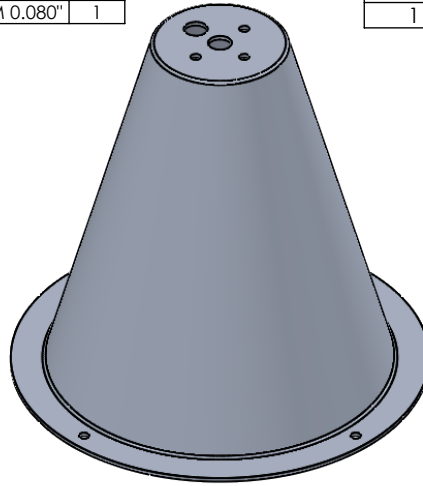
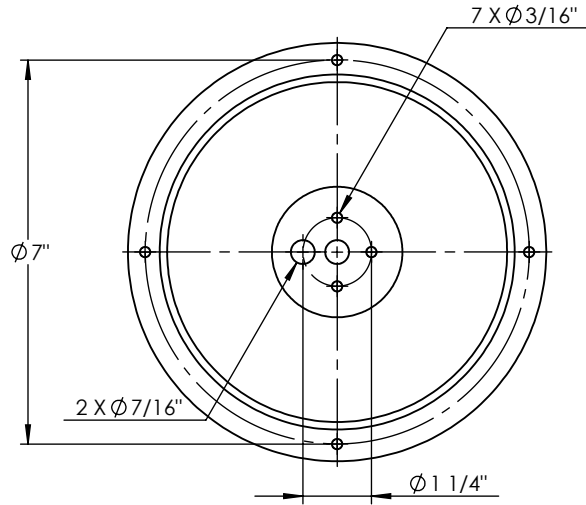


PROPRIETARY AND CONFIDENTIAL
 THE INFORMATION CONTAINED IN THIS DRAWING IS THE SOLE PROPERTY OF <INSERT COMPANY NAME HERE>. ANY REPRODUCTION IN PART OR AS A WHOLE WITHOUT THE WRITTEN PERMISSION OF <INSERT COMPANY NAME HERE> IS PROHIBITED.

		UNLESS OTHERWISE SPECIFIED:	NAME	DATE	SPUN ALUMINUM 0.080"	
		DIMENSIONS ARE IN INCHES	DRAWN		TITLE:	
		TOLERANCES:	CHECKED		BOL-DN-VFNS-16LED-9RAL6004-CA-40K	
		FRACTIONAL ±	ENG APPR.		SIZE DWG. NO. REV	
		ANGULAR: MACH ± BEND ±	MFG APPR.		A	
		TWO PLACE DECIMAL ±	Q.A.		SCALE: 1:2 WEIGHT: SHEET 11 OF 13	
		THREE PLACE DECIMAL ±	COMMENTS:			
		INTERPRET GEOMETRIC TOLERANCING PER:				
		MATERIAL				
NEXT ASSY	USED ON	FINISH				
APPLICATION		DO NOT SCALE DRAWING				

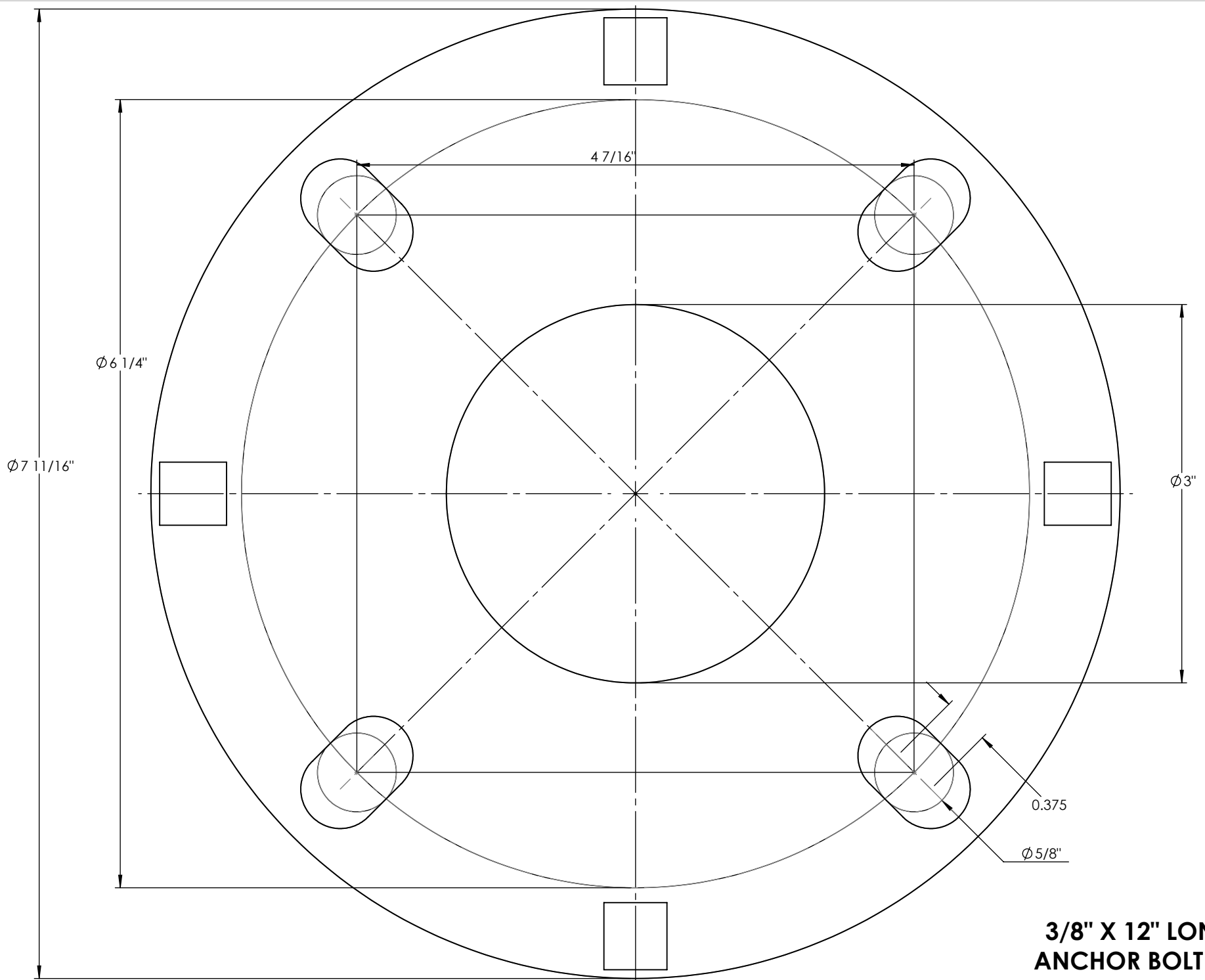
ITEM NO.	PART NUMBER	DESCRIPTION	QTY.
1	BOL-DN-VFNS-16LED-TBR-CA-30K-SPUN CONE	SPUN ALUMINUM 0.080"	1

ITEM NO.	PART NUMBER	DESCRIPTION	QTY.
1	BOL-DN-VFNS-16LED-9RAL6004-CA-40K-TUBE SLEEVE	SPUN ALUMINUM 0.080"	1



UNLESS OTHERWISE SPECIFIED:		NAME	DATE	SPUN ALUMINUM 0.080"	
DIMENSIONS ARE IN INCHES TOLERANCES: FRACTIONAL \pm ANGULAR: MACH \pm BEND \pm TWO PLACE DECIMAL \pm THREE PLACE DECIMAL \pm		DRAWN		TITLE:	
		CHECKED		BOL-DN-VFNS-16LED-9RAL6004-CA-40K	
		ENG APPR.		SIZE DWG. NO. REV	
		MFG APPR.		A	
		Q.A.		SCALE: 1:3.5 WEIGHT: SHEET 12 OF 13	
		COMMENTS:			
INTERPRET GEOMETRIC TOLERANCING PER:					
MATERIAL					
FINISH					
NEXT ASSY		USED ON			
APPLICATION		DO NOT SCALE DRAWING			

PROPRIETARY AND CONFIDENTIAL
THE INFORMATION CONTAINED IN THIS DRAWING IS THE SOLE PROPERTY OF <INSERT COMPANY NAME HERE>. ANY REPRODUCTION IN PART OR AS A WHOLE WITHOUT THE WRITTEN PERMISSION OF <INSERT COMPANY NAME HERE> IS PROHIBITED.



**$\frac{3}{8}$ " X 12" LONG
ANCHOR BOLT SIZE**