

TITLE:

BIR-P6-12'-60LED-MBK-CFA-30K

SIZE DWG. NO.

REV

A TICKET 27167

SCALE: 1:20 WEIGHT:

SHEET 1 OF 15

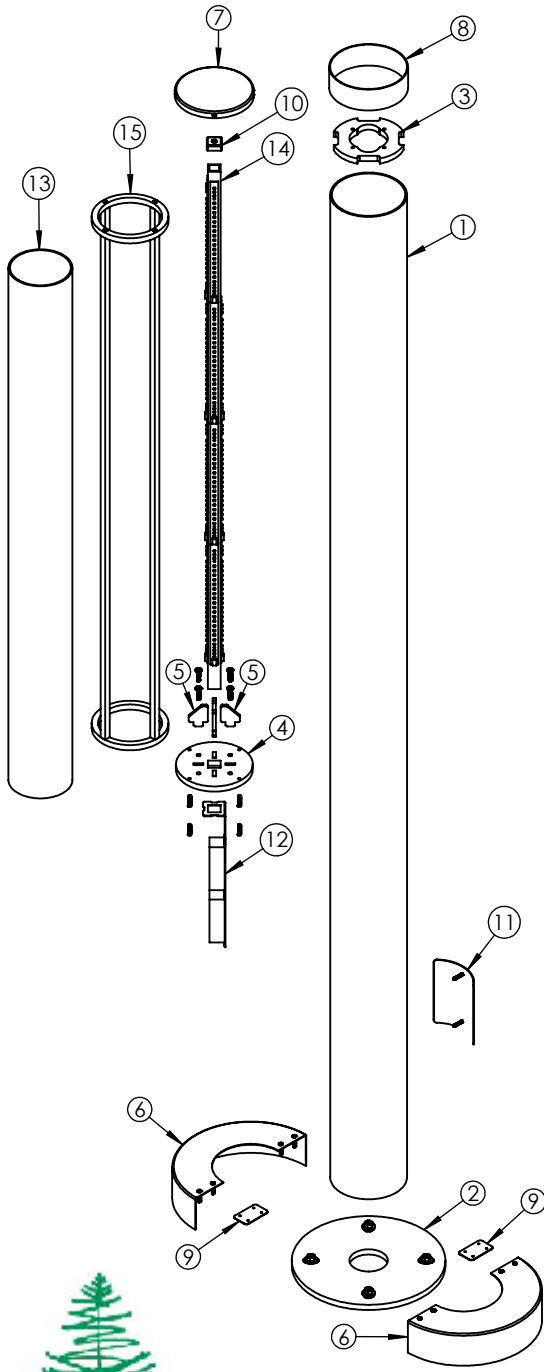
5

4

3

2

1



ITEM NO.	PART NUMBER	DESCRIPTION	QTY.	CUT
1	BIR-P6-12'-60LED-MBK-CFA-30K-CYLINDER BODY	6" ALUMINUM CYLINDER	1	
2	BIR-P6-12'-60LED-MBK-CFA-30K-BASE ANCHOR PLATE	ALUMINUM 0.500" PLATE	1	
3	BIR-P6-12'-60LED-MBK-CFA-30K-TUBE FLANGE	ALUMINUM 0.500" PLATE	1	
4	BIR-P6-12'-60LED-MBK-CFA-30K-SUPPORT PLATE	ALUMINUM 0.500" PLATE	1	
5	BIR-P6-12'-60LED-MBK-CFA-30K-SUPPORT PLATE BRACKET	ALUMINUM 0.250" PLATE	4	
6	BIR-P6-12'-60LED-MBK-CFA-30K-SPUN ANCHOR COVER	SPUN ALUMINUM 0.080"	2	
7	BIR-P6-12'-60LED-MBK-CFA-30K-SPUN TOP CAP	SPUN ALUMINUM 0.080"	1	
8	BIR-P6-12'-60LED-MBK-CFA-30K-CYLINDER SLEEVE	SPUN ALUMINUM 0.080"	1	
9	BIR-P6-12'-60LED-MBK-CFA-30K-ANCHOR COVER BRACKET	ALUMINUM 0.0635"	2	
10	BIR-P6-12'-60LED-MBK-CFA-30K-TUBE BRACKET	ALUMINUM 0.0635"	1	
11	BIR-P6-12'-60LED-MBK-CFA-30K-HAND COVER	ALUMINUM 0.0635"	1	
12	BIR-P6-12'-60LED-MBK-CFA-30K-DRIVER BRACKET	ALUMINUM 0.0635"	1	
13	BIR-P6-12'-60LED-MBK-CFA-30K-ACRYLIC	ACRYLIC	1	
14	BIR-P6-12'-60LED-MBK-CFA-30K-SQUARE TUBE	1" SQUARE ALUMINUM TUBE	1	
15	BIR-P6-12'-60LED-MBK-CFA-30K-ALUMINUM BAR	1/2" SQUARE ALUMINUM BAR	1	
16	ESPEN VEL29070MVH-1	DRIVER	4	
17	AltaILED_PN105B_SMD 2.5	LED	16	



ALL BEND RADIUS .030"

APPLICATION

DO NOT SCALE DRAWING

UNLESS OTHERWISE SPECIFIED:

DIMENSIONS ARE IN INCHES
 TOLERANCES:
 FRACTIONAL ± .003
 ANGULAR: MACH ± .01 BEND ±
 TWO PLACE DECIMAL ±
 THREE PLACE DECIMAL ±.001

INTERPRET GEOMETRIC
 TOLERANCING PER:

MATERIAL

FINISH

NAME DATE

DRAWN
 CHECKED
 ENG APPR.
 MFG APPR.

Q.A.

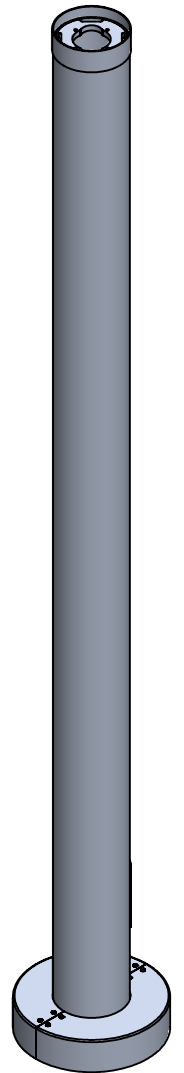
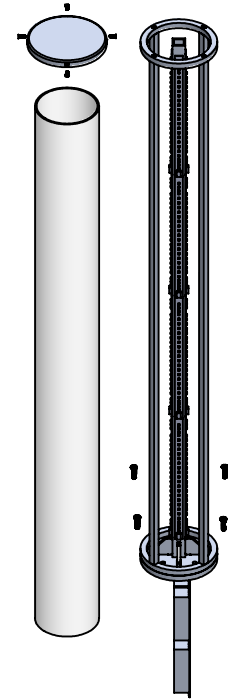
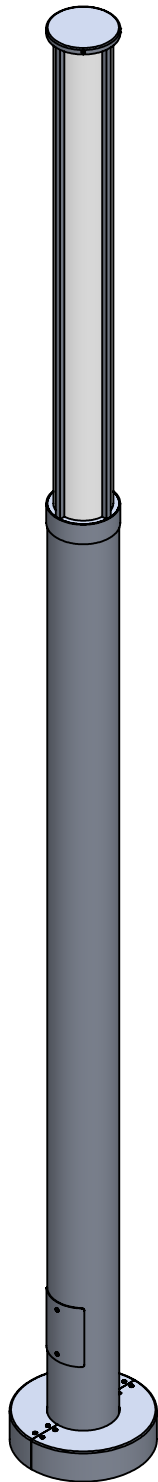
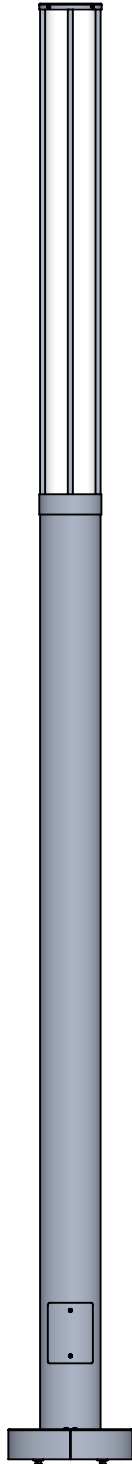
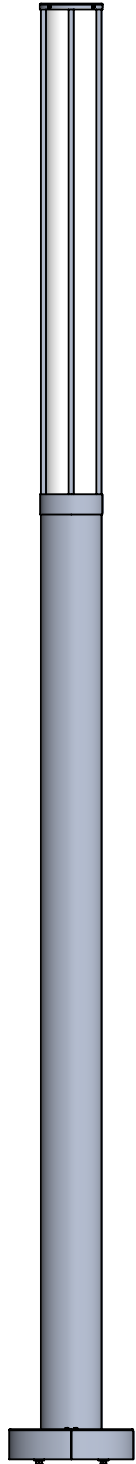
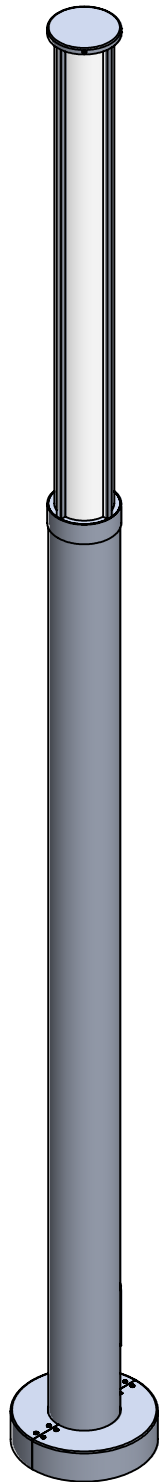
COMMENTS:

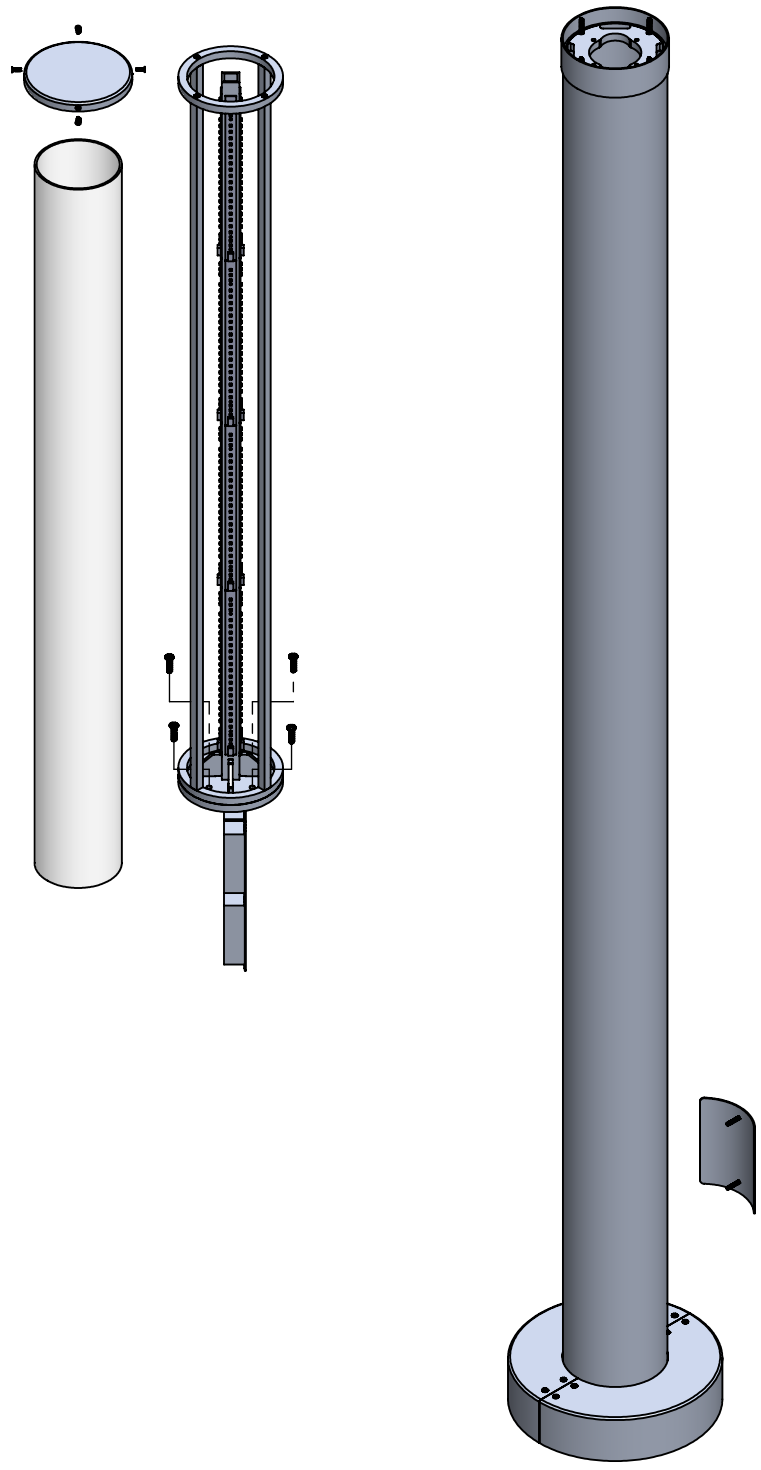
TITLE:

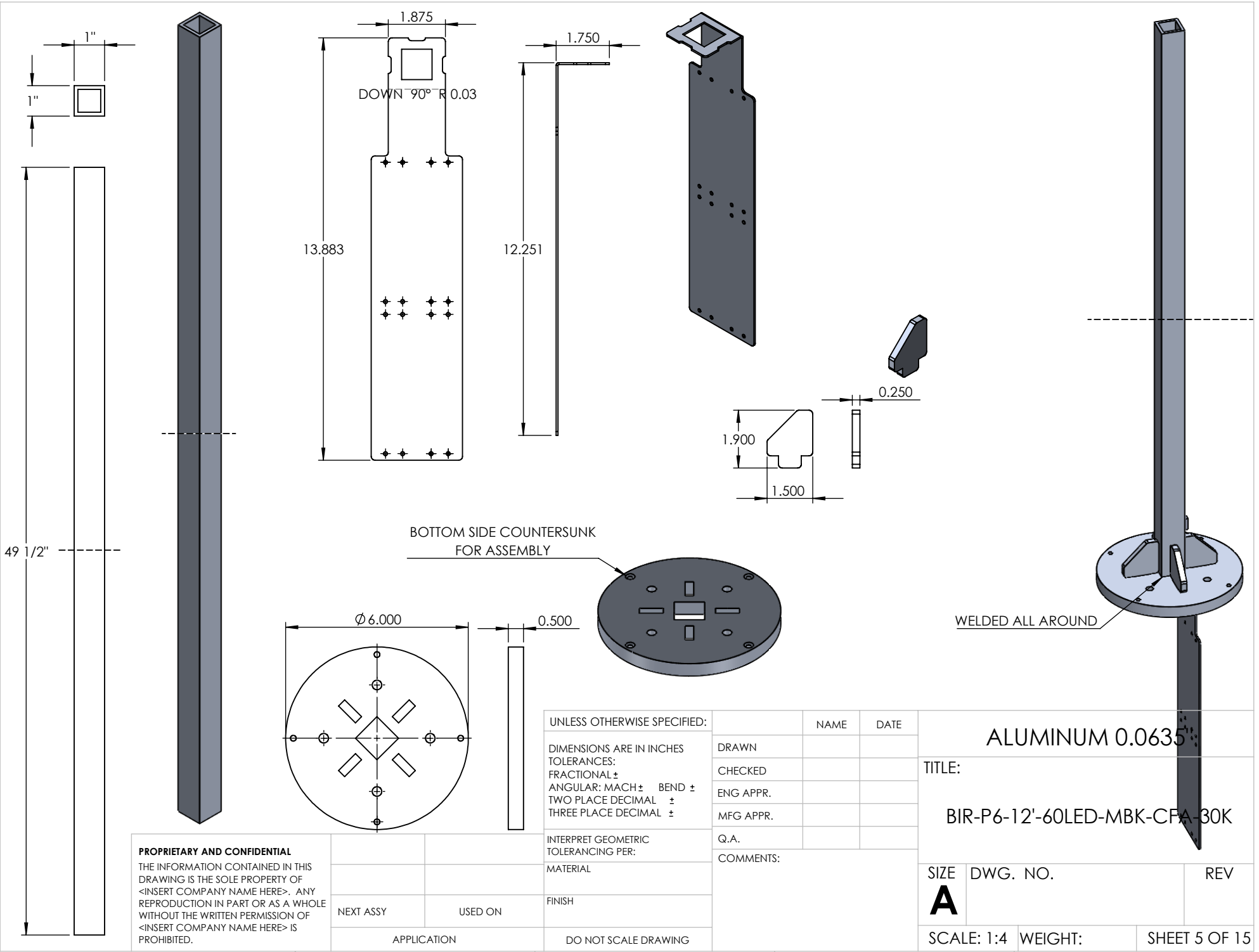
BIR-P6-12'-60LED-MBK-CFA-30K

SIZE DWG. NO. REV
A TICKET 27167

SCALE: 1:15 WEIGHT: SHEET 2 OF 15





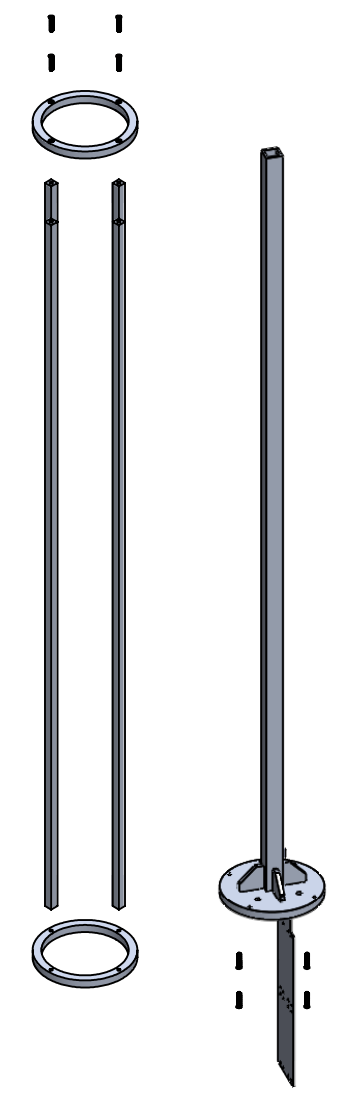
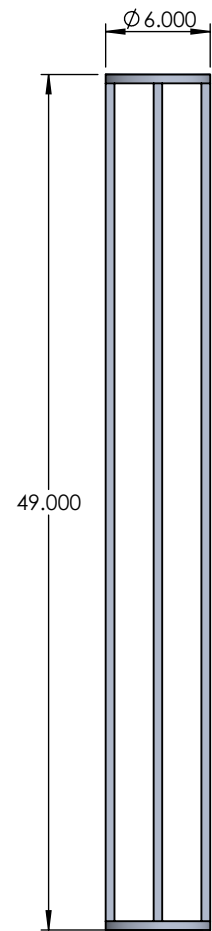
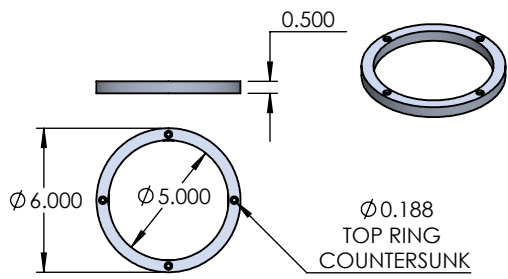
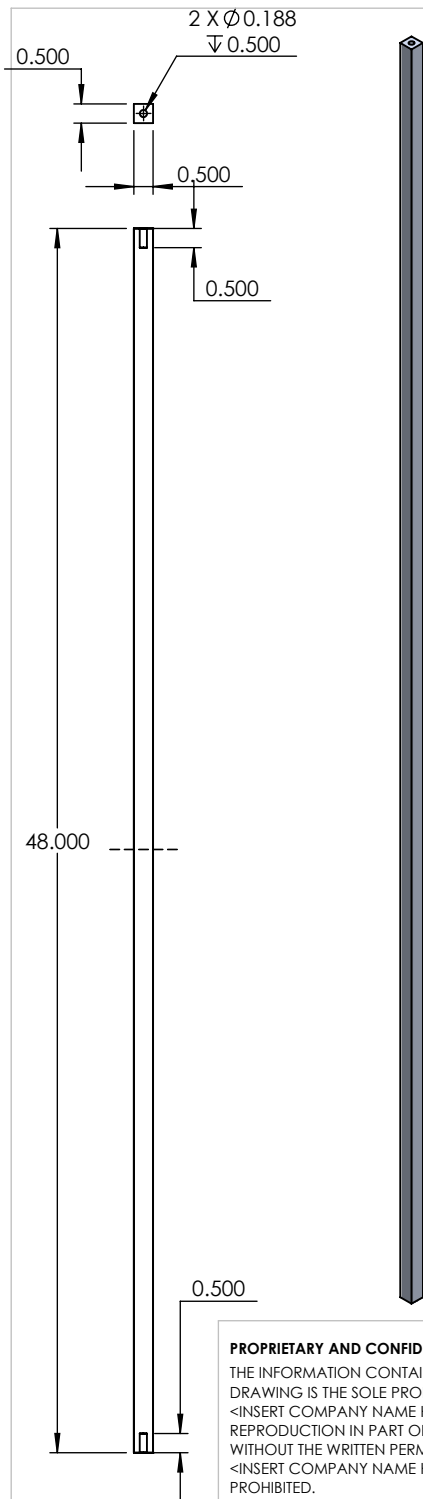


PROPRIETARY AND CONFIDENTIAL
 THE INFORMATION CONTAINED IN THIS DRAWING IS THE SOLE PROPERTY OF <INSERT COMPANY NAME HERE>. ANY REPRODUCTION IN PART OR AS A WHOLE WITHOUT THE WRITTEN PERMISSION OF <INSERT COMPANY NAME HERE> IS PROHIBITED.

NEXT ASSY	USED ON
APPLICATION	

UNLESS OTHERWISE SPECIFIED:	NAME	DATE
DIMENSIONS ARE IN INCHES	DRAWN	
TOLERANCES:	CHECKED	
FRACTIONAL ±	ENG APPR.	
ANGULAR: MACH ± BEND ±	MFG APPR.	
TWO PLACE DECIMAL ±	Q.A.	
THREE PLACE DECIMAL ±	COMMENTS:	
INTERPRET GEOMETRIC TOLERANCING PER:		
MATERIAL		
FINISH		
DO NOT SCALE DRAWING		

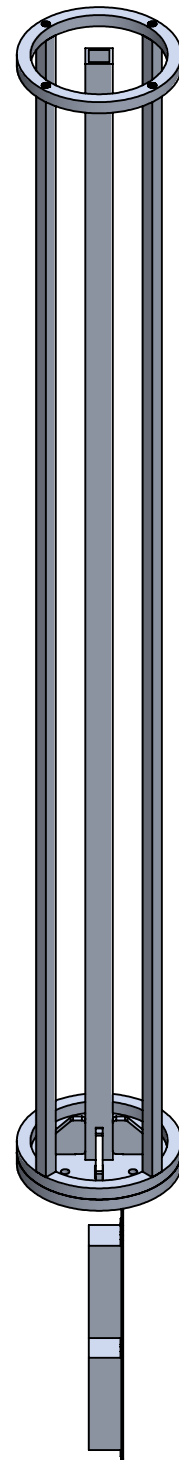
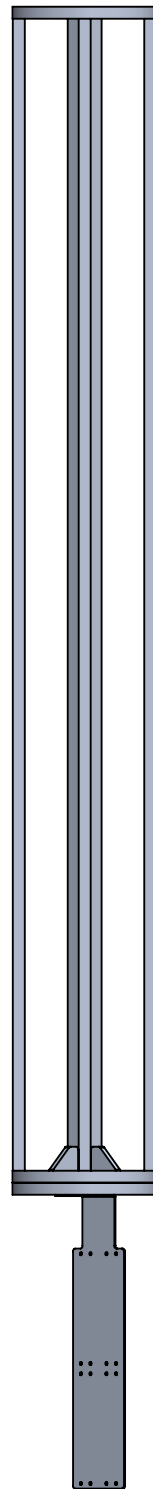
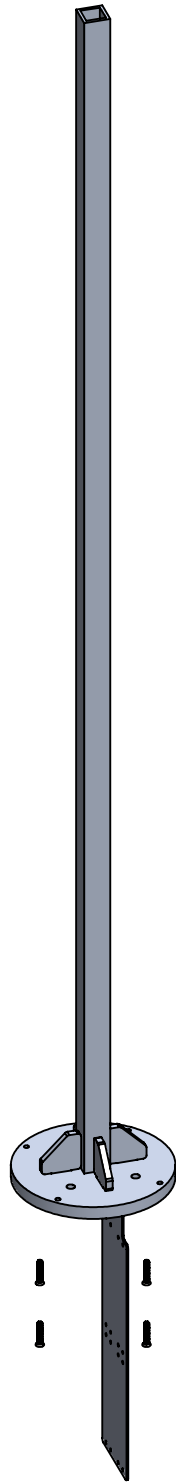
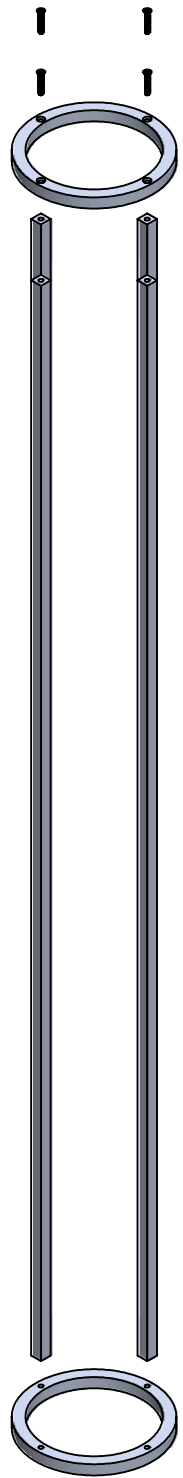
ALUMINUM 0.0635		
TITLE:		
BIR-P6-12'-60LED-MBK-CFA-30K		
SIZE	DWG. NO.	REV
A		
SCALE: 1:4	WEIGHT:	SHEET 5 OF 15

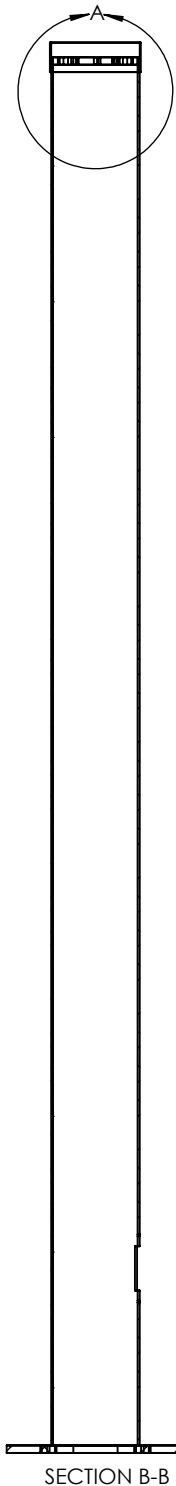
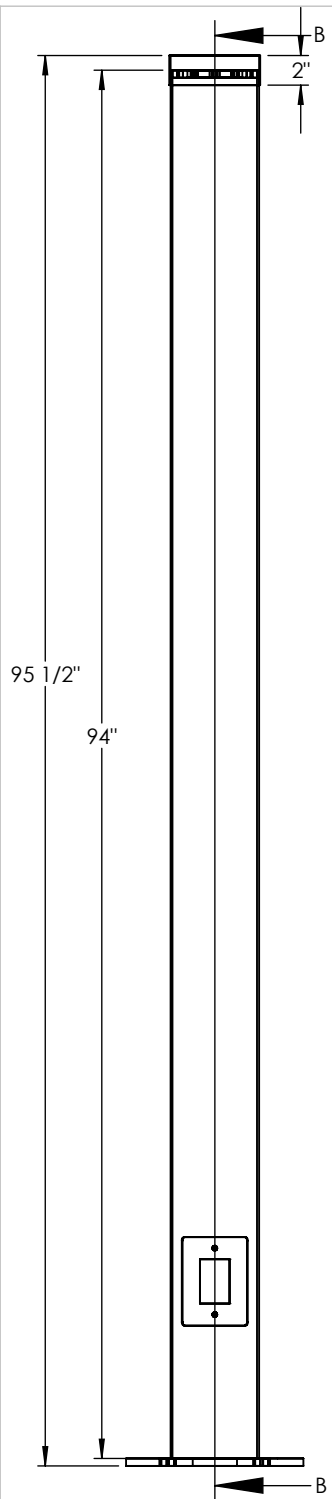


PROPRIETARY AND CONFIDENTIAL
 THE INFORMATION CONTAINED IN THIS DRAWING IS THE SOLE PROPERTY OF <INSERT COMPANY NAME HERE>. ANY REPRODUCTION IN PART OR AS A WHOLE WITHOUT THE WRITTEN PERMISSION OF <INSERT COMPANY NAME HERE> IS PROHIBITED.

		UNLESS OTHERWISE SPECIFIED:		NAME	DATE
		DIMENSIONS ARE IN INCHES		DRAWN	
		TOLERANCES:		CHECKED	
		FRACTIONAL ±		ENG APPR.	
		ANGULAR: MACH ± BEND ±		MFG APPR.	
		TWO PLACE DECIMAL ±		Q.A.	
		THREE PLACE DECIMAL ±		COMMENTS:	
		INTERPRET GEOMETRIC TOLERANCING PER:			
		MATERIAL			
		FINISH			
NEXT ASSY	USED ON				
APPLICATION	DO NOT SCALE DRAWING				

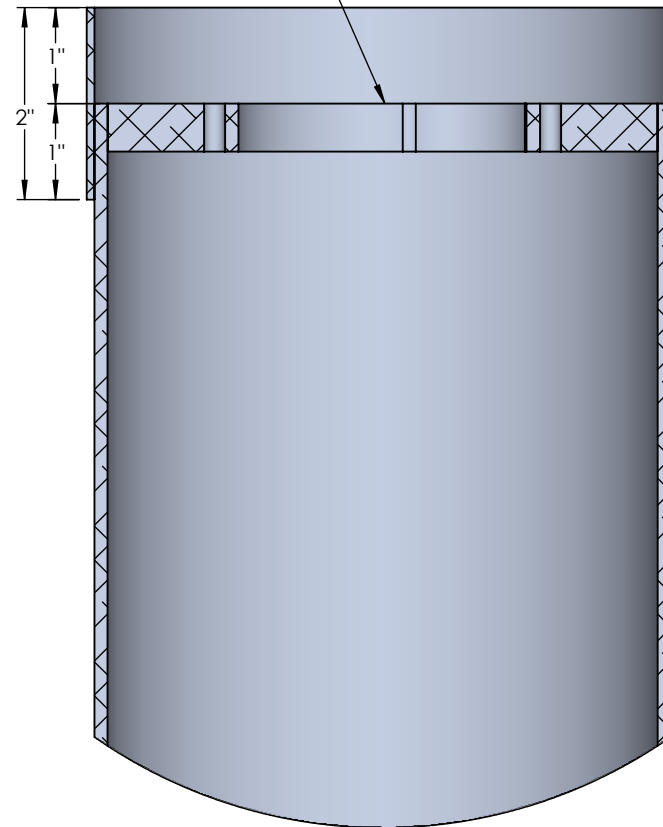
TITLE:		
BIR-P6-12'-60LED-MBK-CFA-30K		
SIZE	DWG. NO.	REV
A		
SCALE: 1:5	WEIGHT:	SHEET 6 OF 15



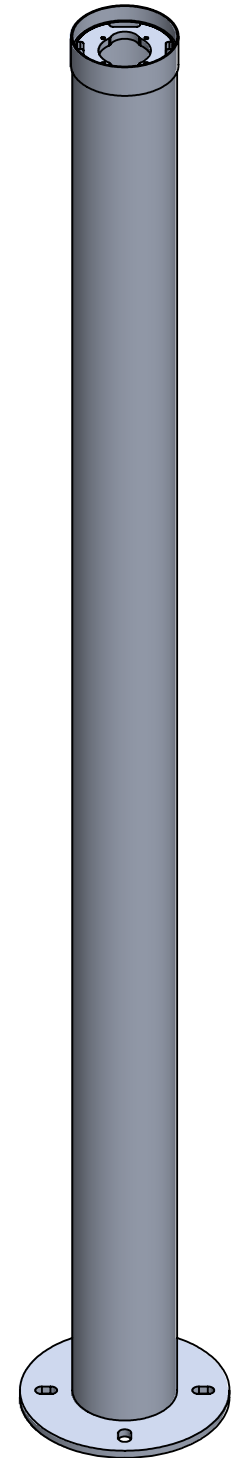


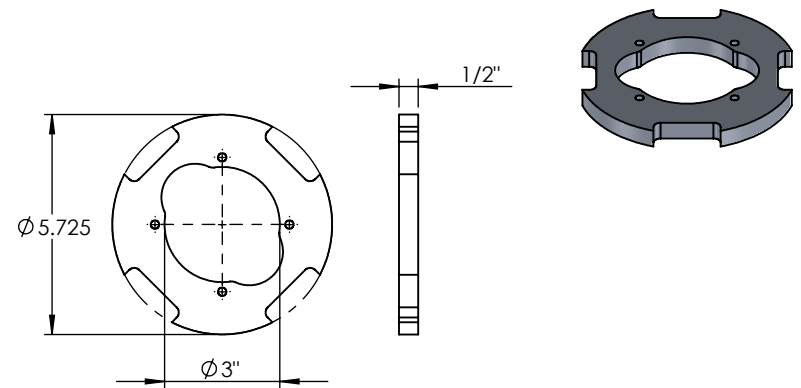
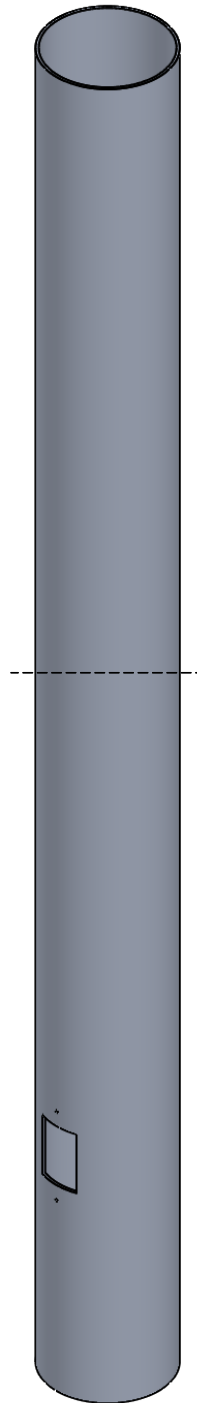
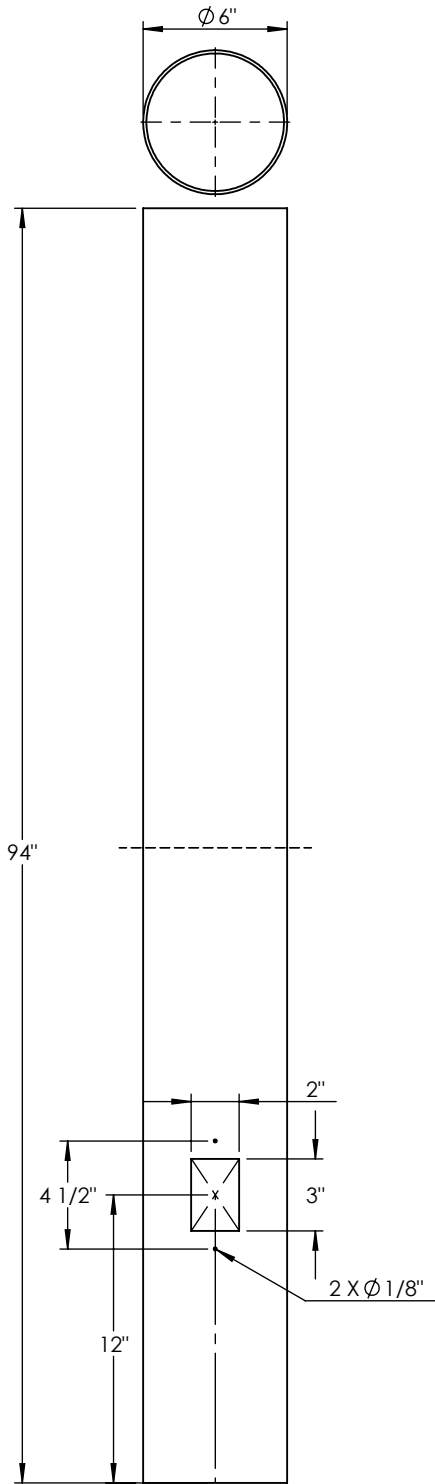
CYLINDER SLEEVE SITS 1" FROM
TOP OF POST CYLINDER

TUBE FLANGE SITS FLUSH TO TOP
OF POST CYLINDER



DETAIL A
SCALE 1 : 2





UNLESS OTHERWISE SPECIFIED:		NAME	DATE	6" ALUMINUM CYLINDER		
DIMENSIONS ARE IN INCHES		DRAWN				TITLE:
TOLERANCES:		CHECKED		BIR-P6-12'-60LED-MBK-CFA-30K		
FRACTIONAL \pm		ENG APPR.				
ANGULAR: MACH \pm BEND \pm		MFG APPR.				
TWO PLACE DECIMAL \pm		Q.A.		SIZE	DWG. NO.	REV
THREE PLACE DECIMAL \pm		COMMENTS:		A		
INTERPRET GEOMETRIC TOLERANCING PER:				SCALE: 1:8	WEIGHT:	SHEET 9 OF 15
MATERIAL						
FINISH						
DO NOT SCALE DRAWING						

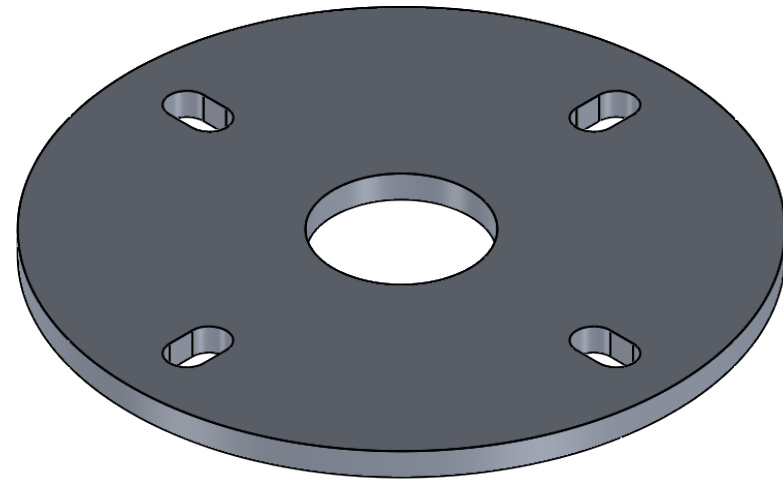
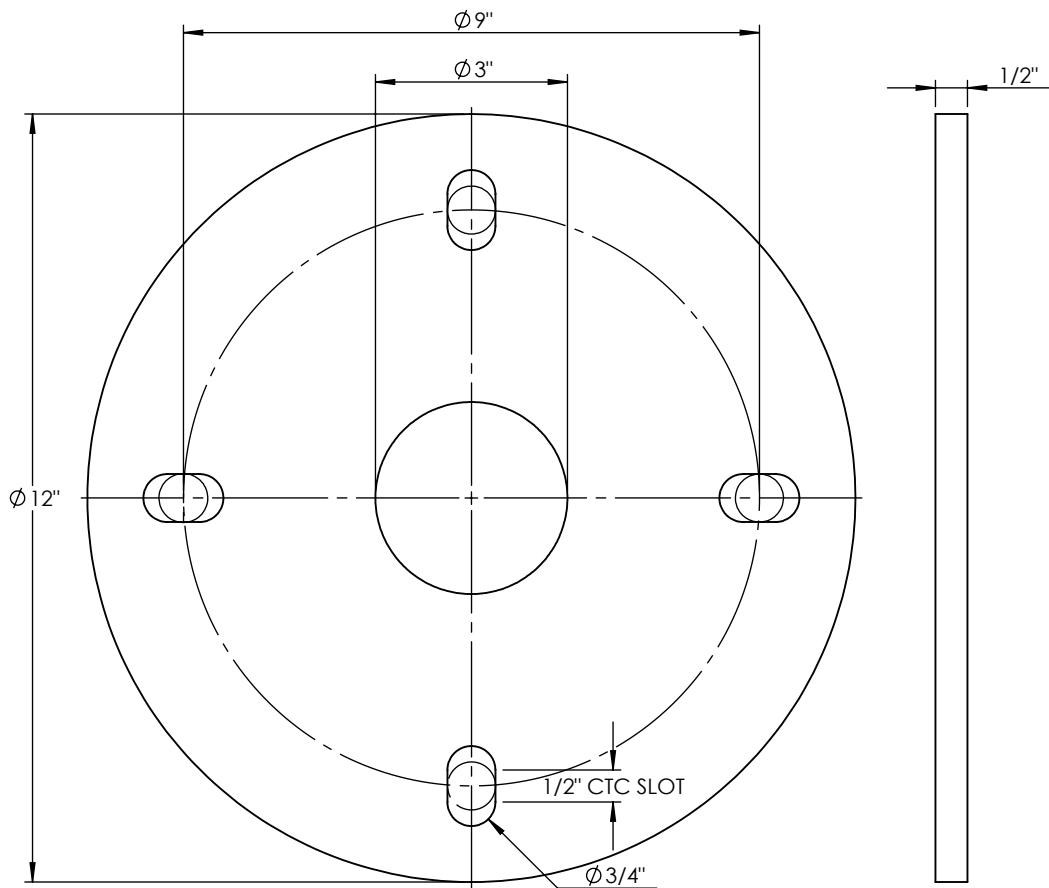
5

4

3

2

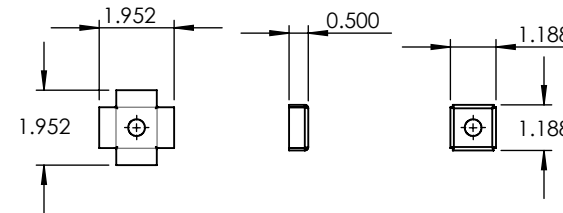
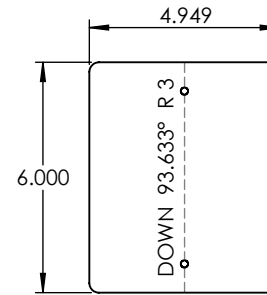
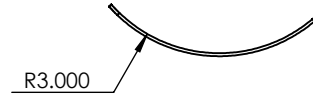
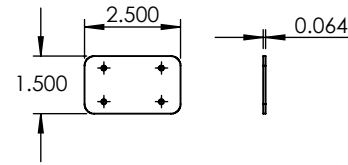
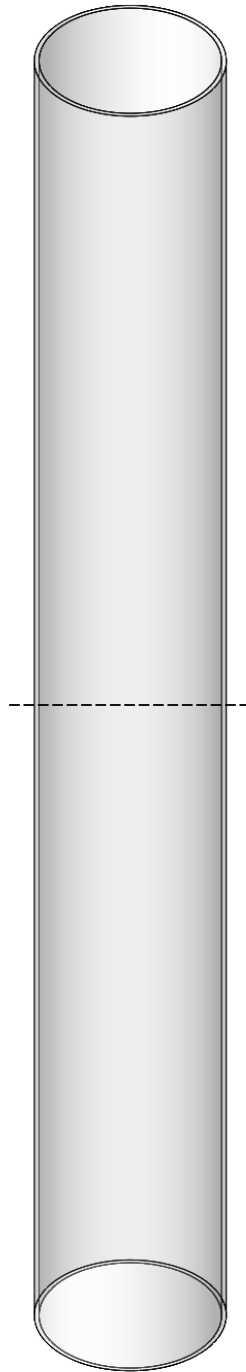
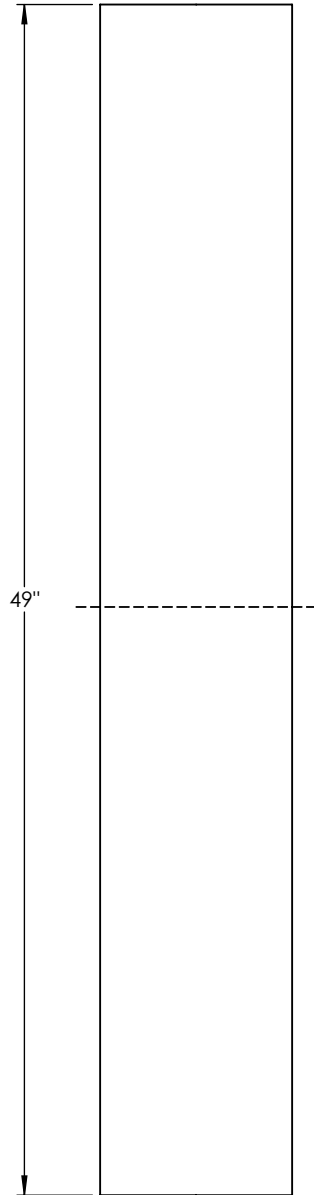
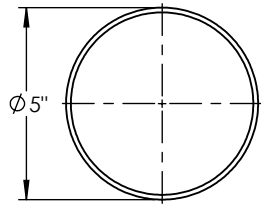
1



PROPRIETARY AND CONFIDENTIAL
 THE INFORMATION CONTAINED IN THIS DRAWING IS THE SOLE PROPERTY OF <INSERT COMPANY NAME HERE>. ANY REPRODUCTION IN PART OR AS A WHOLE WITHOUT THE WRITTEN PERMISSION OF <INSERT COMPANY NAME HERE> IS PROHIBITED.

		UNLESS OTHERWISE SPECIFIED:	NAME	DATE
		DIMENSIONS ARE IN INCHES	DRAWN	
		TOLERANCES:	CHECKED	
		FRACTIONAL ±	ENG APPR.	
		ANGULAR: MACH ± BEND ±	MFG APPR.	
		TWO PLACE DECIMAL ±	Q.A.	
		THREE PLACE DECIMAL ±	COMMENTS:	
		INTERPRET GEOMETRIC TOLERANCING PER:	5/8" X 24" LONG ANCHOR BOLT SIZE	
		MATERIAL		
		FINISH		
NEXT ASSY	USED ON		SIZE	DWG. NO.
			A	REV
APPLICATION	DO NOT SCALE DRAWING		SCALE: 1:3	WEIGHT:

ALUMINUM 0.500" PLATE	
TITLE:	
BIR-P6-12'-60LED-MBK-CFA-30K	
SCALE: 1:3	SHEET 10 OF 15



UNLESS OTHERWISE SPECIFIED:		NAME	DATE	ALUMINUM 0.0635"		
DIMENSIONS ARE IN INCHES		DRAWN				TITLE:
TOLERANCES:		CHECKED		BIR-P6-12'-60LED-MBK-CFA-30K		
FRACTIONAL ±		ENG APPR.				
ANGULAR: MACH ± BEND ±		MFG APPR.				
TWO PLACE DECIMAL ±		Q.A.		SIZE	DWG. NO.	REV
THREE PLACE DECIMAL ±		COMMENTS:		A		
INTERPRET GEOMETRIC TOLERANCING PER:				SCALE: 1:5	WEIGHT:	SHEET 11 OF 15
MATERIAL						
FINISH						
NEXT ASSY	USED ON					
APPLICATION		DO NOT SCALE DRAWING				

5

4

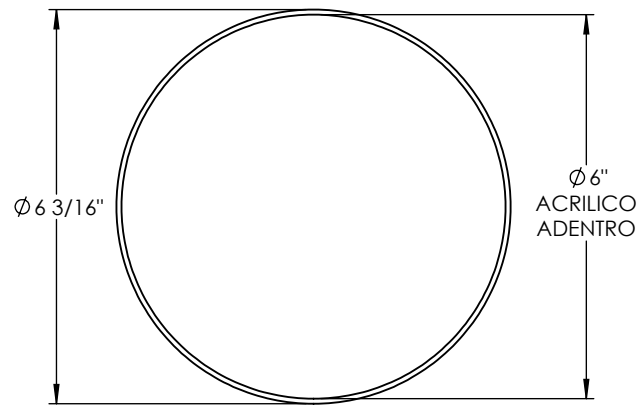
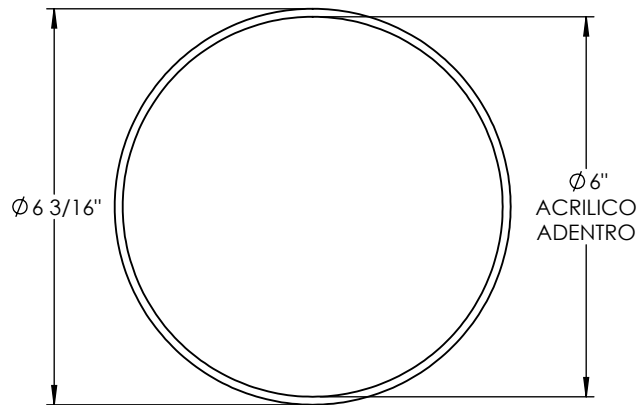
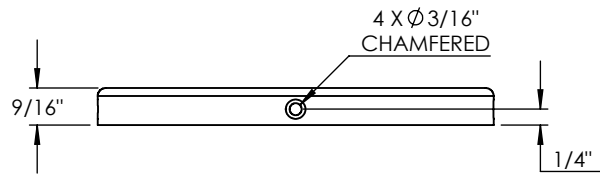
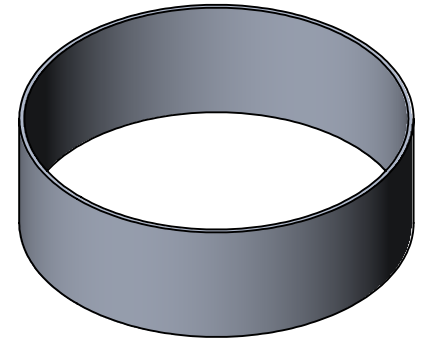
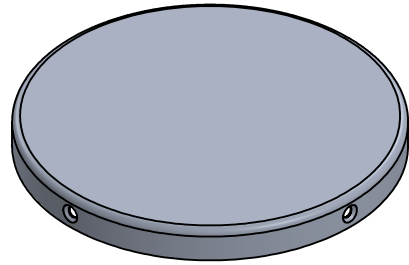
3

2

1

ITEM NO.	PART NUMBER	DESCRIPTION	QTY.
1	BIR-P6-12'-60LED-MBK-CFA-30K-SPUN TOP CAP	SPUN ALUMINUM 0.080"	1

ITEM NO.	PART NUMBER	DESCRIPTION	QTY.
1	BIR-P6-12'-60LED-MBK-CFA-30K-CYLINDER SLEEVE	SPUN ALUMINUM 0.080"	1



PROPRIETARY AND CONFIDENTIAL
 THE INFORMATION CONTAINED IN THIS DRAWING IS THE SOLE PROPERTY OF <INSERT COMPANY NAME HERE>. ANY REPRODUCTION IN PART OR AS A WHOLE WITHOUT THE WRITTEN PERMISSION OF <INSERT COMPANY NAME HERE> IS PROHIBITED.

		UNLESS OTHERWISE SPECIFIED:		NAME	DATE
		DIMENSIONS ARE IN INCHES		DRAWN	
		TOLERANCES:		CHECKED	
		FRACTIONAL ±		ENG APPR.	
		ANGULAR: MACH ± BEND ±		MFG APPR.	
		TWO PLACE DECIMAL ±		Q.A.	
		THREE PLACE DECIMAL ±		COMMENTS:	
		INTERPRET GEOMETRIC TOLERANCING PER:			
		MATERIAL			
		FINISH			
NEXT ASSY	USED ON				
APPLICATION		DO NOT SCALE DRAWING			

SPUN ALUMINUM 0.080"

TITLE:

BIR-P6-12'-60LED-MBK-CFA-30K

SIZE
A

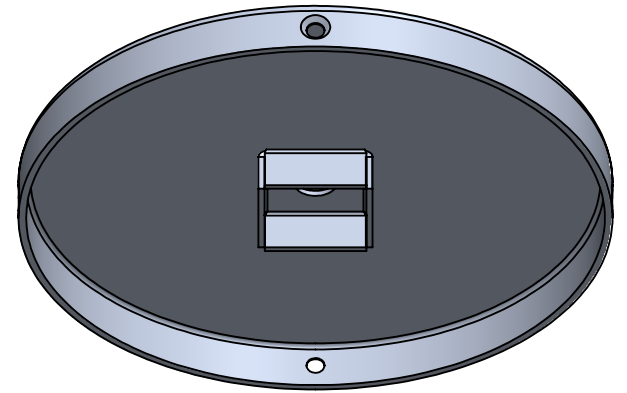
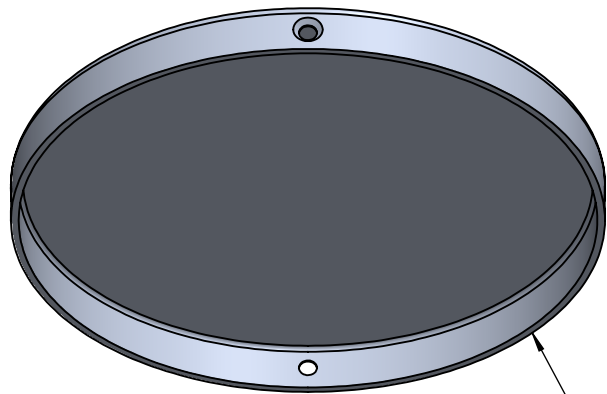
DWG. NO.

REV

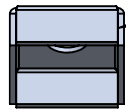
SCALE: 1:3

WEIGHT:

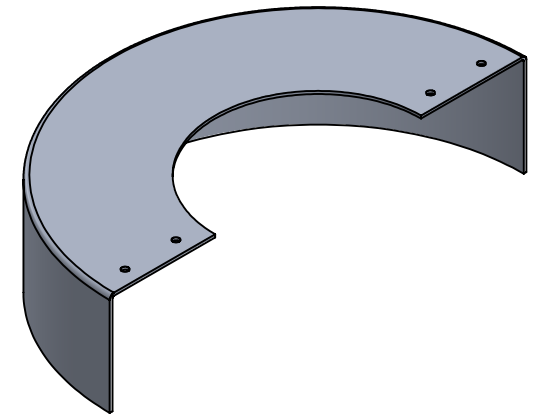
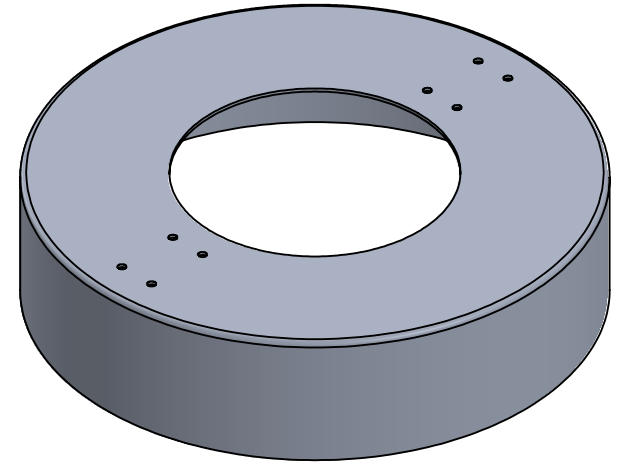
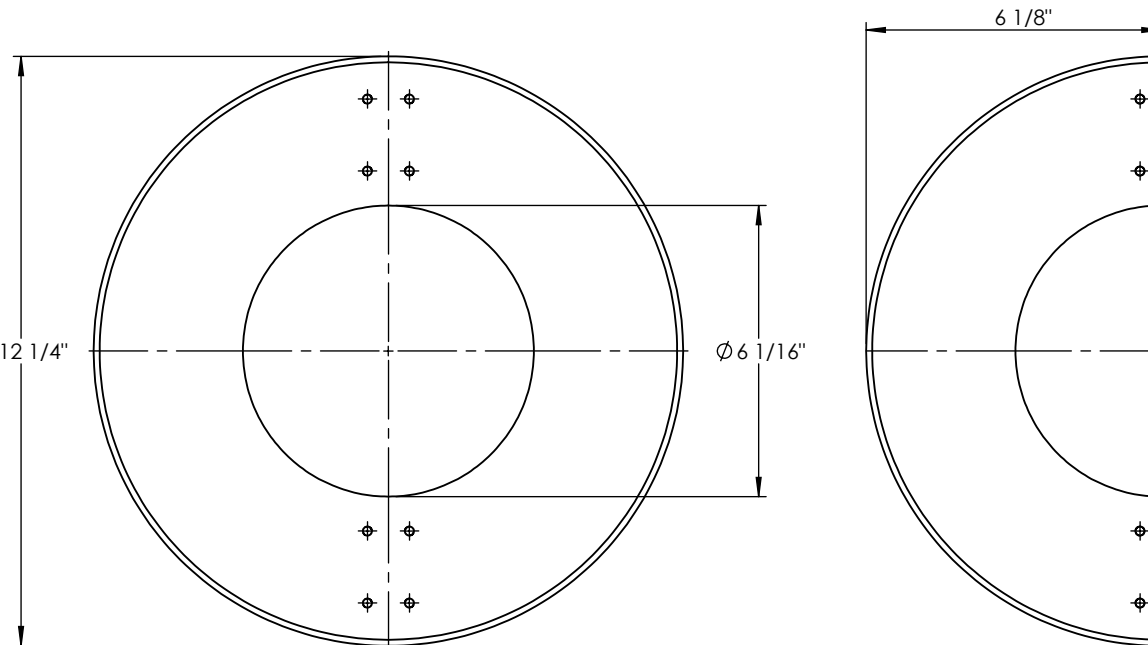
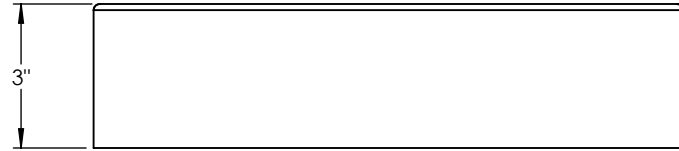
SHEET 12 OF 15



WELDED TOGETHER



ITEM NO.	PART NUMBER	DESCRIPTION	QTY.
1	BIR-P6-12'-60LED-MBK-CFA-30K-SPUN ANCHOR COVER	SPUN ALUMINUM 0.080"	1



PROPRIETARY AND CONFIDENTIAL
 THE INFORMATION CONTAINED IN THIS DRAWING IS THE SOLE PROPERTY OF <INSERT COMPANY NAME HERE>. ANY REPRODUCTION IN PART OR AS A WHOLE WITHOUT THE WRITTEN PERMISSION OF <INSERT COMPANY NAME HERE> IS PROHIBITED.

UNLESS OTHERWISE SPECIFIED:		NAME	DATE
DIMENSIONS ARE IN INCHES		DRAWN	
TOLERANCES:		CHECKED	
FRACTIONAL ±		ENG APPR.	
ANGULAR: MACH ± BEND ±		MFG APPR.	
TWO PLACE DECIMAL ±		Q.A.	
THREE PLACE DECIMAL ±		COMMENTS:	
INTERPRET GEOMETRIC TOLERANCING PER:			
MATERIAL			
FINISH			
NEXT ASSY	USED ON		
APPLICATION	DO NOT SCALE DRAWING		

TITLE:		
SPUN ALUMINUM 0.080"		
BIR-P6-12'-60LED-MBK-CFA-30K		
SIZE	DWG. NO.	REV
A		
SCALE: 1:14	WEIGHT:	SHEET 14 OF 15

5

4

3

2

1

