



Catalog #		Type
Project		LED BOLLARD
Comments		
Prepared By		

Material

All parts are durable Aluminum Extruded Tube with .080 Spun aluminum Roof Cap with supports fabricated for maximum strength.

Standard White Frosted Premium Acrylic or
Clear Frosted Premium Acrylic

LED

ALTA Long Life, high-efficiency, surface mount LEDs mounted on MPCB Aluminum Boards

Lifespan:

100,000 hour LED lifespan based on IES
LM-80 results and TM-21 calculations

Driver

0-10V Dimming Driver for 120/277 volt,
Constant Current, metal case, 5 year war-
ranty

Label

ETL Listed for US and Canada for Wet Location

Sample Number: ALT-B-45-48W-AB-WF

Series	Style	Size	Lamp	Finish	Standard Lens	Options
ALT	Bollard	36"	24W	Architectural Bronze (AB)	White Frosted (WF)	LED EMR - Up to 24W
		45"	48W	Textured Bronze (TBR)	Clear Frosted (CFA)	OCC Sensors
				Matte Black (MBK)		Photo Cell Control
				Semi Gloss Black (GBK)		
			45"	Textured Black (TBK)	Optional Lens	
			24W	Textured Rust (TR)	White Alabaster (WA)	
			48W	Matte White (MW)	Honey Onyx (HO)	
				Textured White (TW)	Natural Horn (NH)	
				Gloss White (GW)	Beige Alabaster (BA)	
				Metallic Grey (MG)	Honey Swirl (HS)	
				Brushed Aluminum (BA)		
				adder		
				Metallic Nickel (MN)		
				Textured Verde Patina (TVP)		
				Satin Brass (SB)		
				Copper Vein (CV)		
				Gold Vein (GV)		
				Silver Vein (SV)		
				Chrome (CH)		

DELIVERED LUMENS PER WATT

2700K = 80
3000K = 90
3500K = 100
4100K = 110
5000K = 120

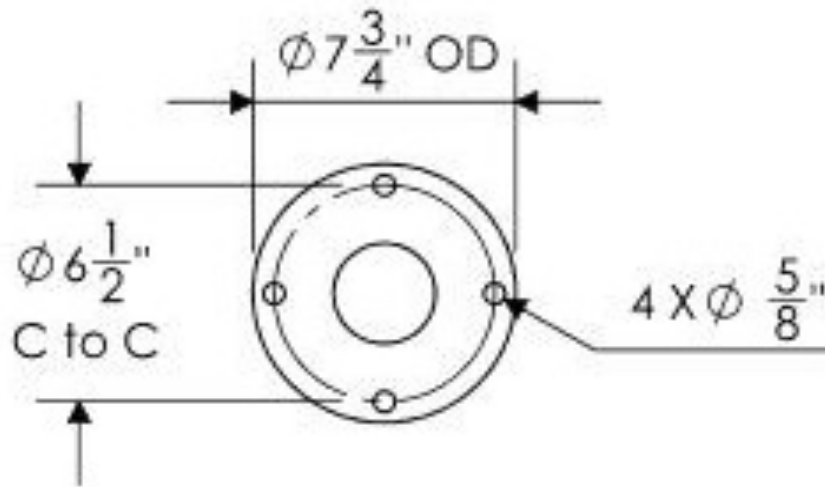
Evergreen Lighting
www.evergreenlighting.com



ALTON BOLLARD SERIES

Instruction Sheet

Mounting Template



Mounting

Standard anchor bolts are 3/8" X 12" X 3". Bolts, nuts, and washers shall be hot dipped galvanized steel.

Warranty: Evergreen Lighting warrants Bollard LED products sold by Evergreen Lighting to be free from defects in material and workmanship for a period of One year for metal parts, a period of five 5 years for exterior housing powdercoat finish, a period of five 5 years for LED Light Engines and, a period of five 5 years for LED power components (driver), from the date of sale of such goods to the buyer as specified in Evergreen Lighting shipment documents for each product.



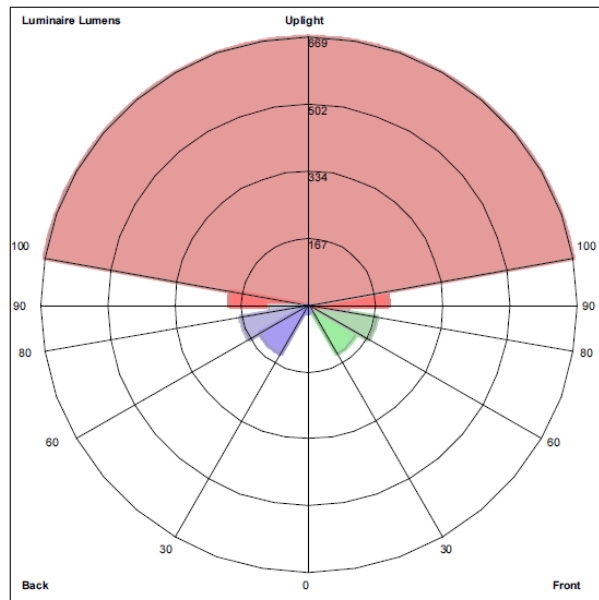
**EVERGREEN
LIGHTING**

ALTON BOLLARD SERIES

Photometrics

ALT-B-24W

LUMINAIRE CLASSIFICATION SYSTEM (LCS) GRAPH

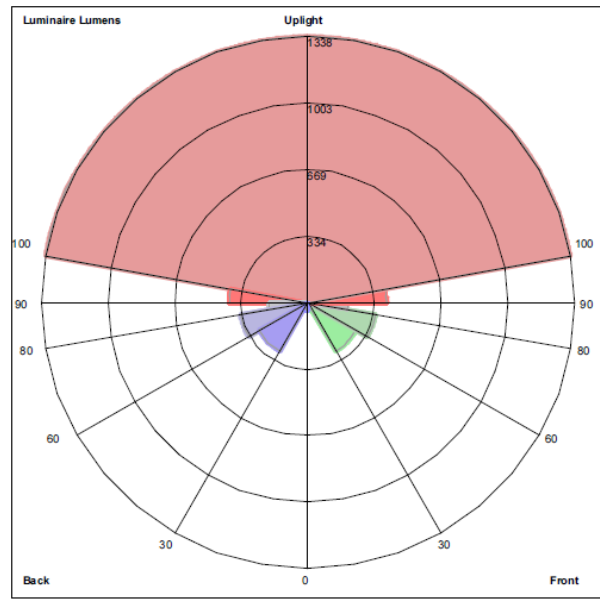


Luminaire Lumens:
Front: Low=18.4, Medium=139.9, High=172.3, Very High=98.6
Back: Low=18.1, Medium=140.6, High=172.0, Very High=98.7
Uplight: Low=197.3, High=668.8

BUG Rating : B1-U4-G1

ALT-B-48W

LUMINAIRE CLASSIFICATION SYSTEM (LCS) GRAPH



Luminaire Lumens:
Front: Low=36.9, Medium=279.7, High=344.5, Very High=197.2
Back: Low=36.1, Medium=281.1, High=343.9, Very High=197.5
Uplight: Low=394.7, High=1337.5

BUG Rating : B1-U5-G2

Evergreen Lighting
www.evergreenlighting.com

