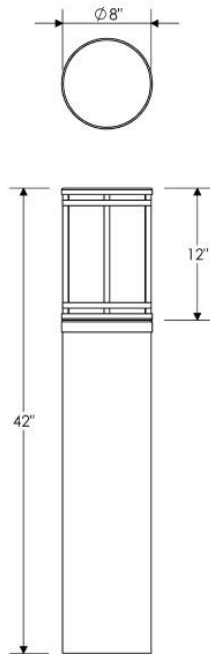




Catalog #		Type
Project		LED BOLLARD
Comments		
Prepared By		



## SPECIFICATIONS

All parts are durable Aluminum Extruded Tube with .080 Spun aluminum Roof with Square Solid Aluminum Bar design fabricated for maximum strength.

Standard White Frosted Premium Acrylic or Clear  
Frosted Premium Acrylic

## ALTA Long Life, high-efficiency, surface mount LEDs mounted on MPCB Aluminum Boards

100,000 hour LED lifespan based on IES LM-80 results and TM-21 calculations

0-10V Dimming Driver for 120/277 volt, Constant Current, metal case, 5 year warranty

ETL Listed for US and Canada for  
Wet Location

Sample Number: BAL-B-42-36W-AB-WF

Series	Style	Size	Lamp	Finish	Standard Lens	Options
BAL	Bollard	30"	12W 24W 36W	Architectural Bronze (AB) Textured Bronze (TBR) Matte Black (MBK) Semi Gloss Black (GBK) Textured Black (TBK) Textured Rust (TR) Matte White (MW) Textured White (TW) Gloss White (GW) Metallic Grey (MG) Brushed Aluminum (BA)	White Frosted (WF) Clear Frosted (CFA)	LED EMR - Up to 24W OCC Sensors Photo Cell Control
		42"	12W 24W 36W	adder Metallic Nickel (MN) Textured Verde Patina (TVP) Satin Brass (SB) Copper Vein (CV) Gold Vein (GV) Silver Vein (SV) Chrome (CH)	<b>Optional Lens</b> White Alabaster (WA) Honey Onyx (HO) Natural Horn (NH) Beige Alabaster (BA) Honey Swirl (HS)	

**DELIVERED LUMENS PER WATT**

2700K = 80
3000K = 90
3500K = 100
4100K = 110
5000K = 120

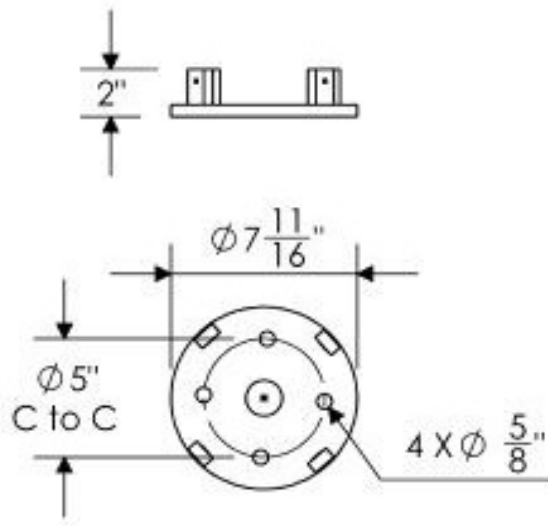
Evergreen Lighting  
www.evergreenlighting.com



## BALDWIN BOLLARD SERIES

### Instruction Sheet

#### Mounting Template



#### Mounting

Standard anchor bolts are 3/8" X 12" X 3". Bolts, nuts, and washers shall be hot dipped galvanized steel.

**Warranty:** Evergreen Lighting warrants Bollard LED products sold by Evergreen Lighting to be free from defects in material and workmanship for a period of One year for metal parts, a period of five 5 years for exterior housing powdercoat finish, a period of five 5 years for LED Light Engines and, a period of five 5 years for LED power components (driver), from the date of sale of such goods to the buyer as specified in Evergreen Lighting shipment documents for each product.

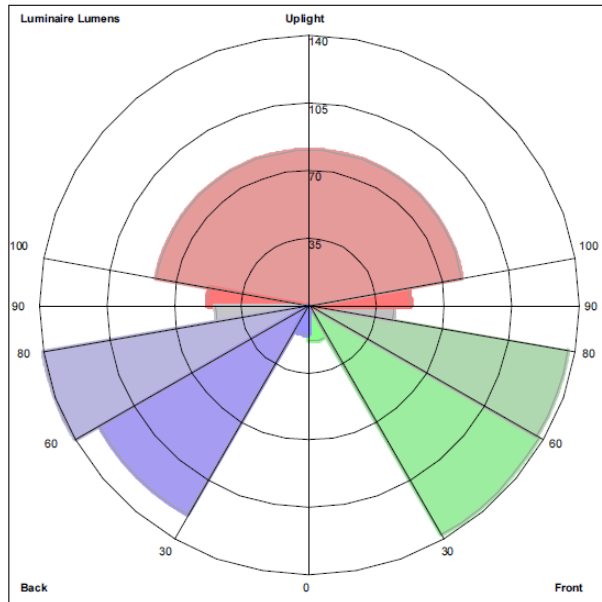


## BALDWIN BOLLARD SERIES

### Photometrics

#### BAL-B-24W

LUMINAIRE CLASSIFICATION SYSTEM (LCS) GRAPH

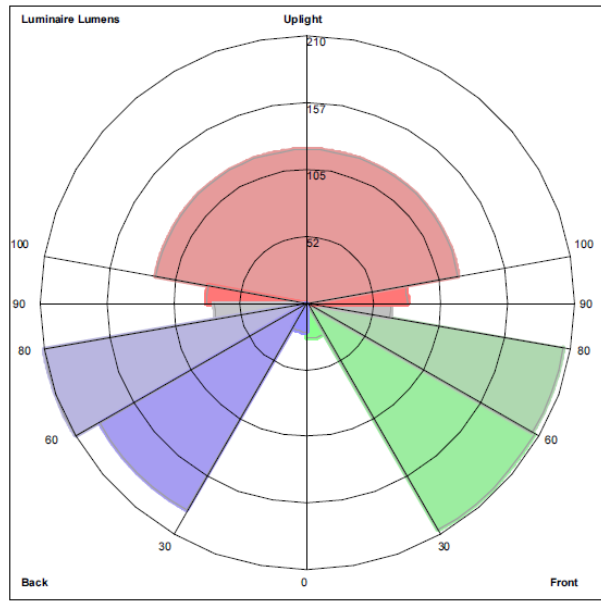


Luminaire Lumens:  
Front: Low=18.4, Medium=137.3, High=136.0, Very High=43.9  
Back: Low=15.1, Medium=125.4, High=139.7, Very High=48.4  
Uplight: Low=52.5, High=80.3

BUG Rating : B1-U3-G1

#### BAL-B-36W

LUMINAIRE CLASSIFICATION SYSTEM (LCS) GRAPH



Luminaire Lumens:  
Front: Low=27.6, Medium=205.9, High=204.0, Very High=65.9  
Back: Low=22.7, Medium=188.1, High=209.6, Very High=72.6  
Uplight: Low=78.7, High=120.4

BUG Rating : B1-U3-G1

Evergreen Lighting  
[www.evergreenlighting.com](http://www.evergreenlighting.com)

