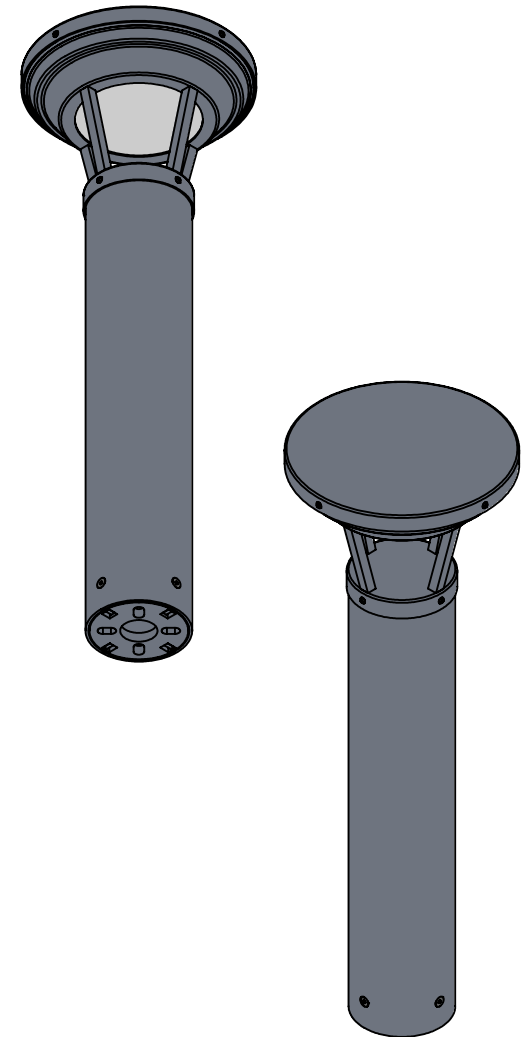
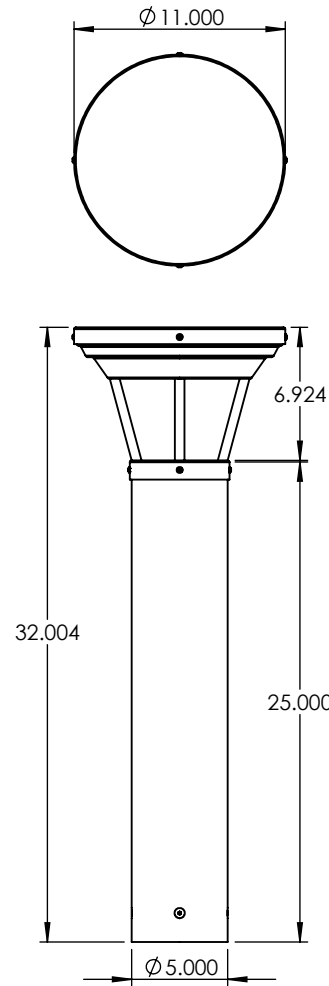
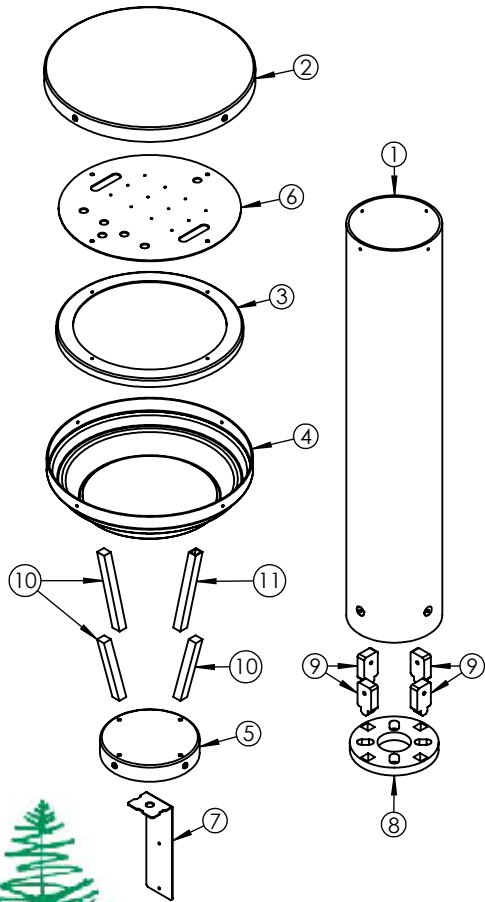


ITEM NO.	PART NUMBER	DESCRIPTION	QTY.	CUT
1	EC-ALC-B-MD-12W-5" CYLINDER	5" CYLINDER TUBE	1	
2	EC-ALC-B-MD-12W-SPUN TOP COVER	SPUN ALUMINUM 0.080"	1	
3	EC-ALC-B-MD-12W-SPUN LED BRACKET	SPUN ALUMINUM 0.080"	1	
4	EC-ALC-B-MD-12W-SPUN SEAT BOWL	SPUN ALUMINUM 0.080"	1	
5	EC-ALC-B-MD-12W-SPUN FITTER	SPUN ALUMINUM 0.080"	1	
6	EC-ALC-B-MD-12W-LED PLATE	ALUMINUM 0.0635"	1	
7	EC-ALC-B-MD-12W-DRIVER BRACKET	ALUMINUM 0.0635"	1	
8	EC-ALC-B-MD-12W-ROUND ANCHOR PLATE	ALUMINUM 0.500" PLATE	1	
9	EC-ALC-B-MD-12W-ROUND ANCHOR TAB	ALUMINUM 0.500" PLATE	4	
10	EC-ALC-B-MD-12W-SPACER BAR ARMS	1/2" SQUARE ALUMINUM BAR	3	
11	EC-ALC-B-MD-12W-SPACER TUBE ARMS	1/2" SQUARE ALUMINUM TUBE	1	
12	EC-ALC-B-MD-12W-ACRYLIC	ACRYLIC	1	
13	99926A138	18-8 FLAT HEAD SCREW	4	
14	92949A194	8-32 HEAD SCREW	8	
15	AltILED_PN1012_RevD	LED	4	
16	Espen VEL19070MVH-1	DRIVER	1	



UNLESS OTHERWISE SPECIFIED:	NAME	DATE	TITLE:  EC-ALC-B-MD-12W	
DIMENSIONS ARE IN INCHES TOLERANCES: FRACTIONAL ± .003 ANGULAR: MACH ± .01 BEND ± TWO PLACE DECIMAL ± THREE PLACE DECIMAL ±.001	DRAWN			
INTERPRET GEOMETRIC TOLERANCING PER:	CHECKED		SIZE DWG. NO. REV	
MATERIAL	ENG APPR.			
FINISH	MFG APPR.		SCALE: 1:10 WEIGHT: SHEET 1 OF 12	
APPLICATION	Q.A.			
DO NOT SCALE DRAWING	COMMENTS:			



ALL BEND RADIUS .030"

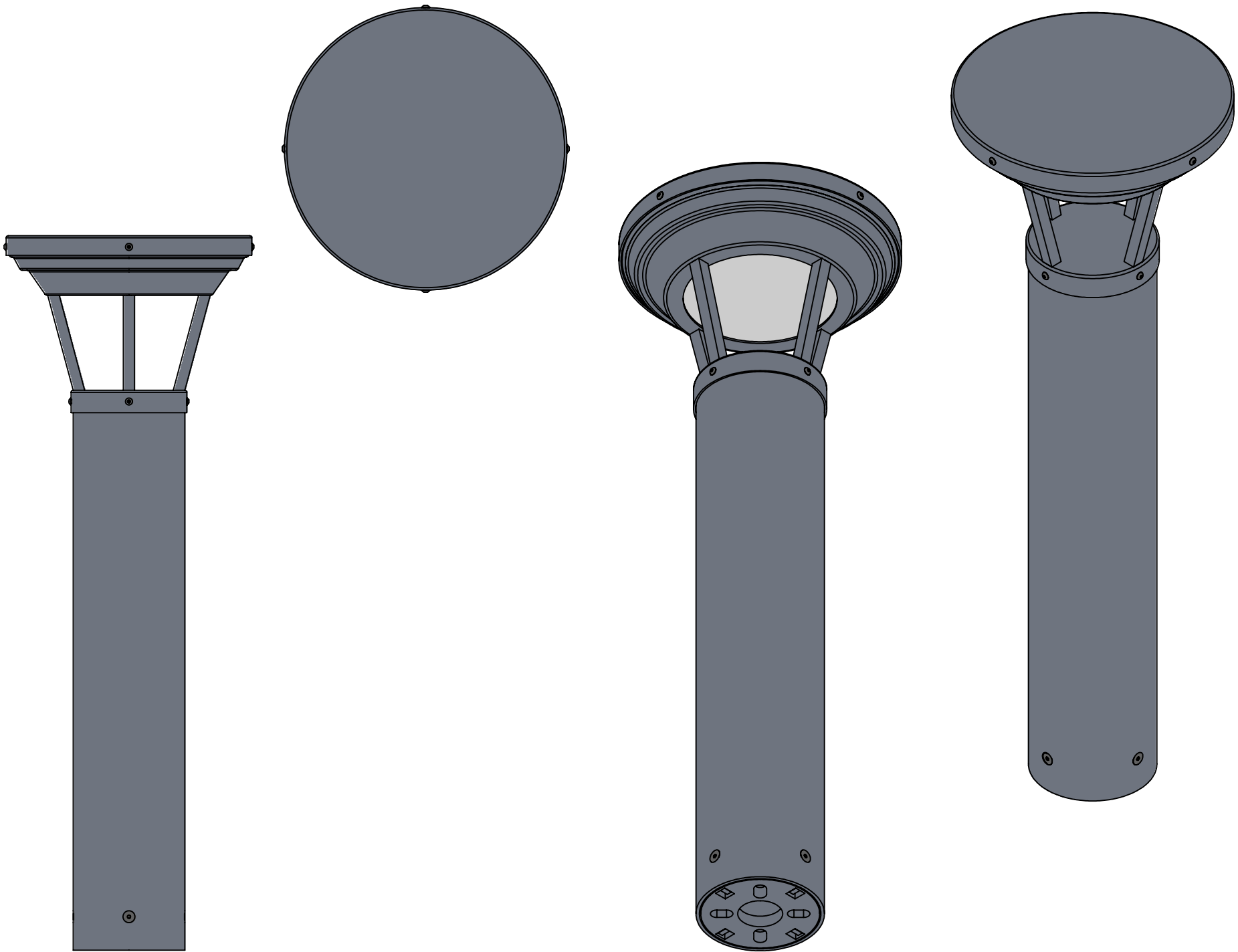
5

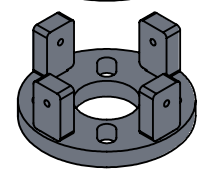
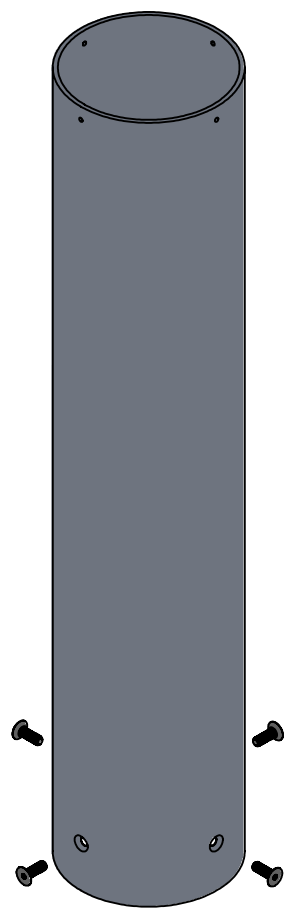
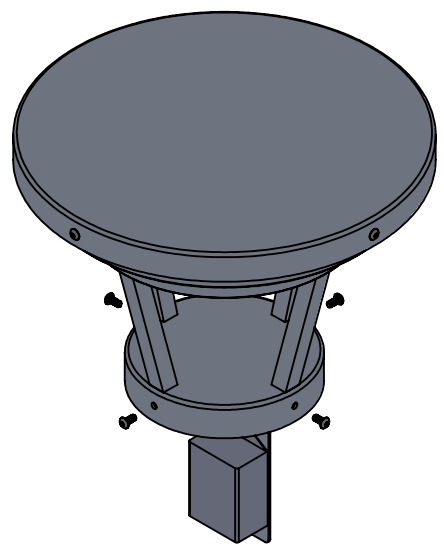
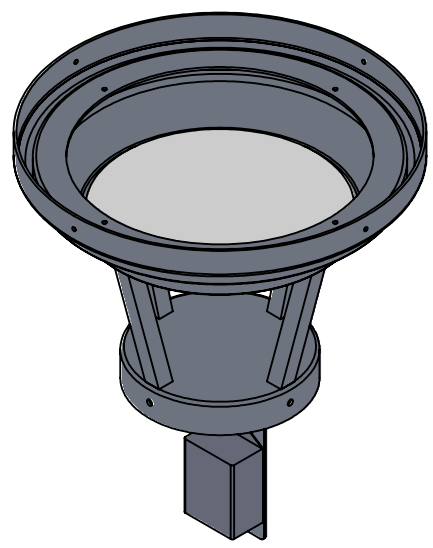
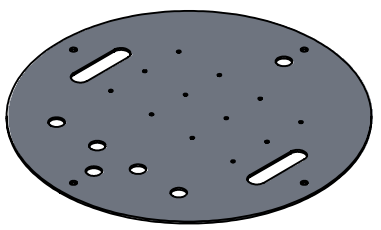
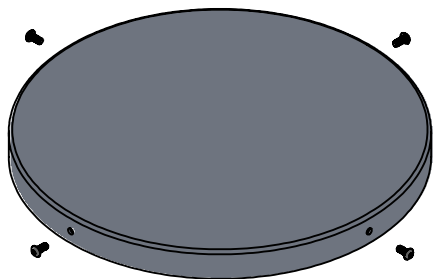
4

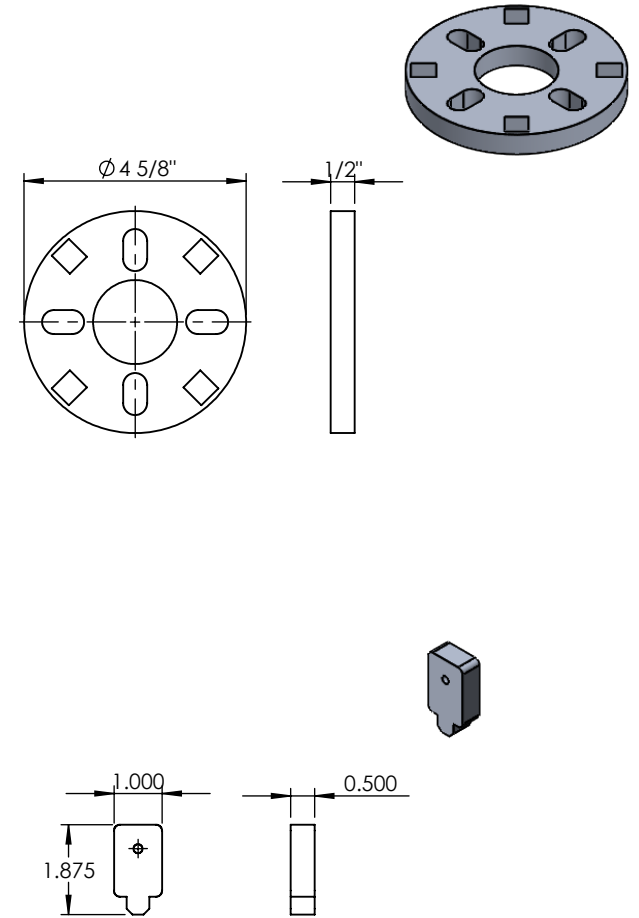
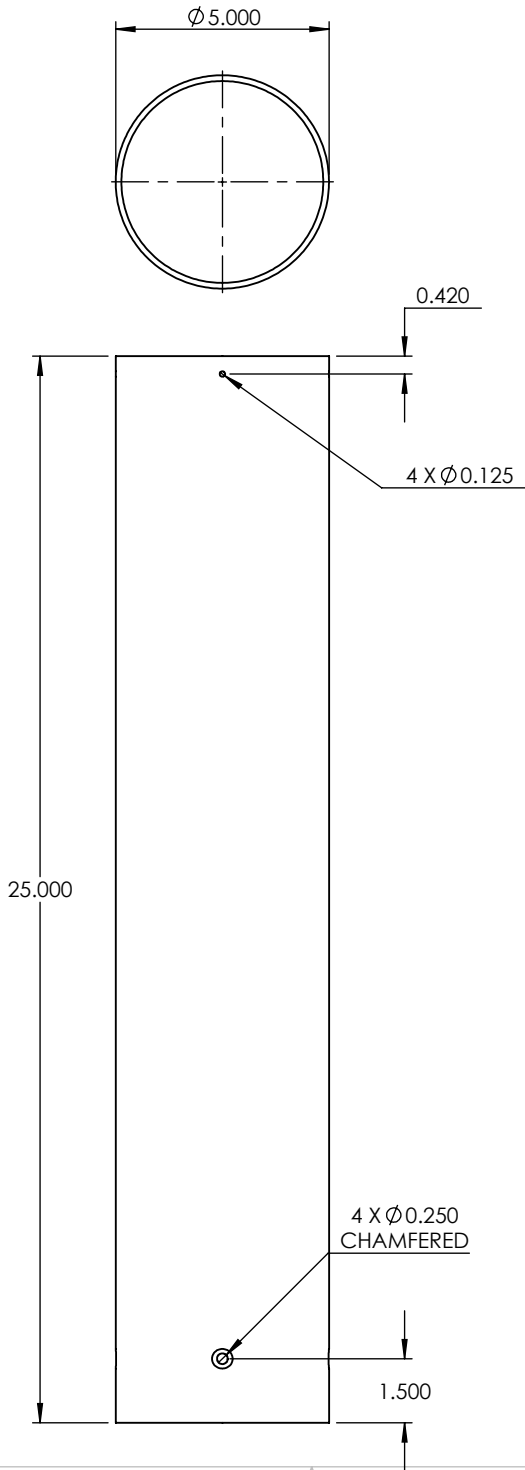
3

2

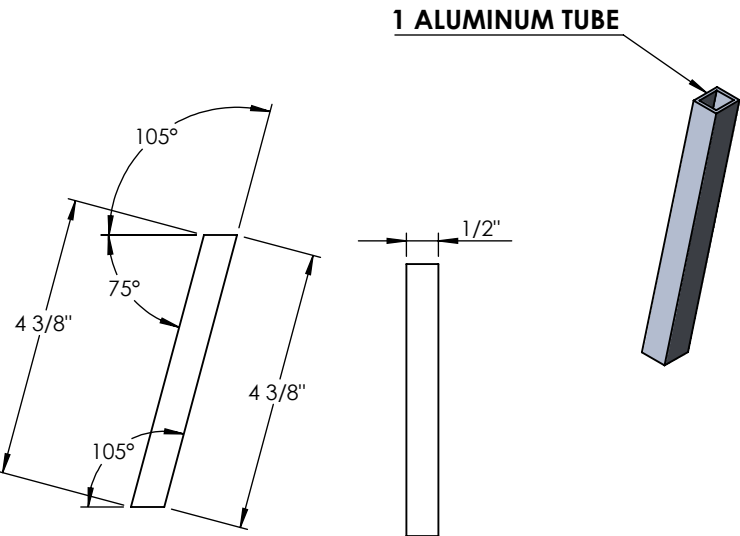
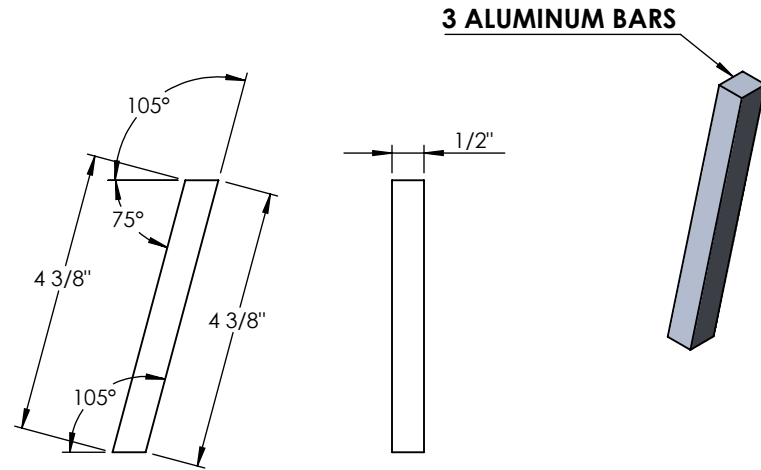
1



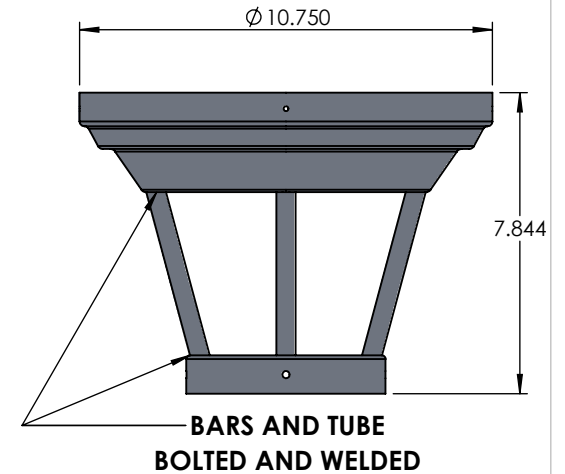
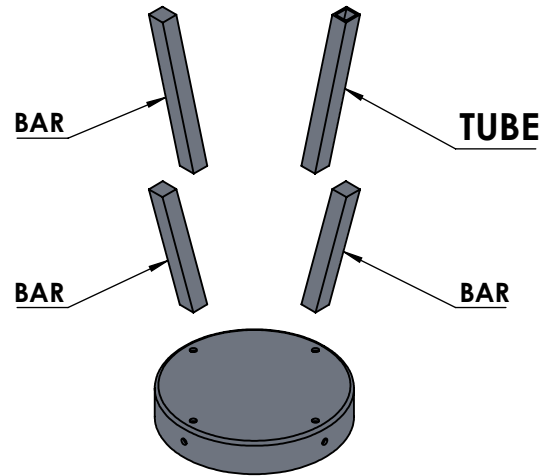
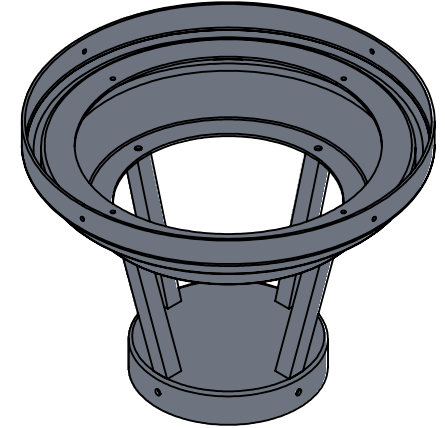
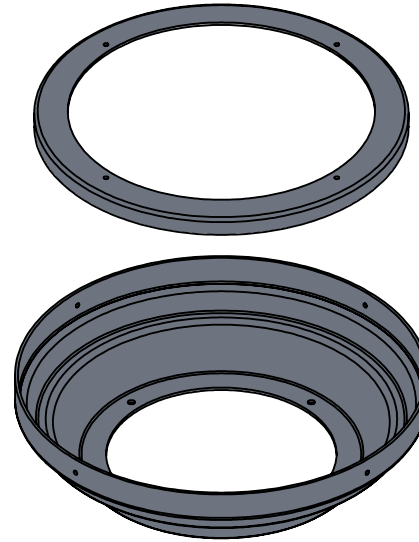




UNLESS OTHERWISE SPECIFIED:		NAME	DATE	5" CYLINDER TUBE	
DIMENSIONS ARE IN INCHES TOLERANCES: FRACTIONAL ± ANGULAR: MACH ± BEND ± TWO PLACE DECIMAL ± THREE PLACE DECIMAL ±		DRAWN			
INTERPRET GEOMETRIC TOLERANCING PER:		CHECKED		SIZE	DWG. NO.
MATERIAL		ENG APPR.			
FINISH		MFG APPR.		SCALE: 1:4.5WEIGHT:	
DO NOT SCALE DRAWING		Q.A.		SHEET 4 OF 12	
		COMMENTS:			



**ALL SPINNINGS AND  
TUBE/ARMS WELDED AS ONE**



**PROPRIETARY AND CONFIDENTIAL**  
THE INFORMATION CONTAINED IN THIS DRAWING IS THE SOLE PROPERTY OF <INSERT COMPANY NAME HERE>. ANY REPRODUCTION IN PART OR AS A WHOLE WITHOUT THE WRITTEN PERMISSION OF <INSERT COMPANY NAME HERE> IS PROHIBITED.

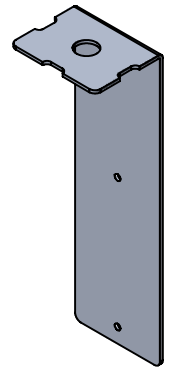
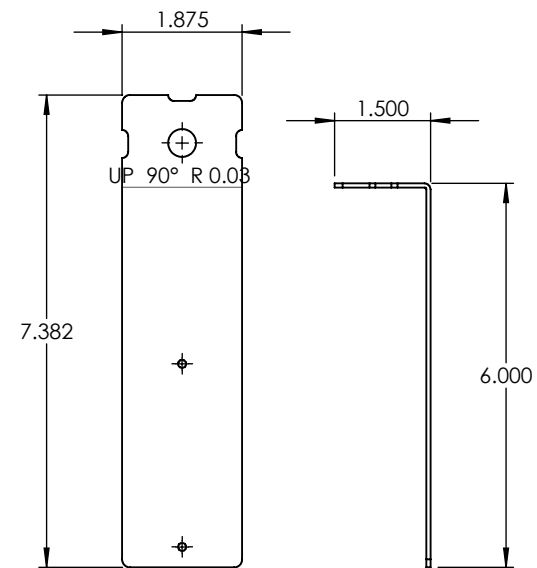
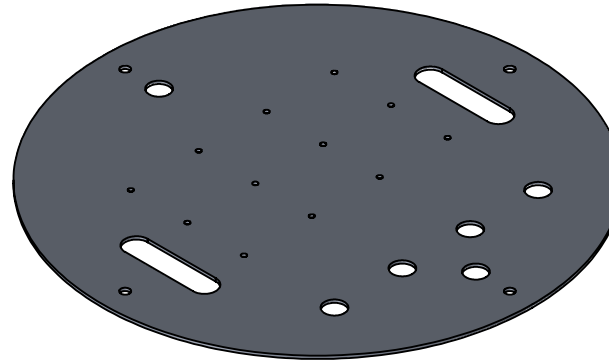
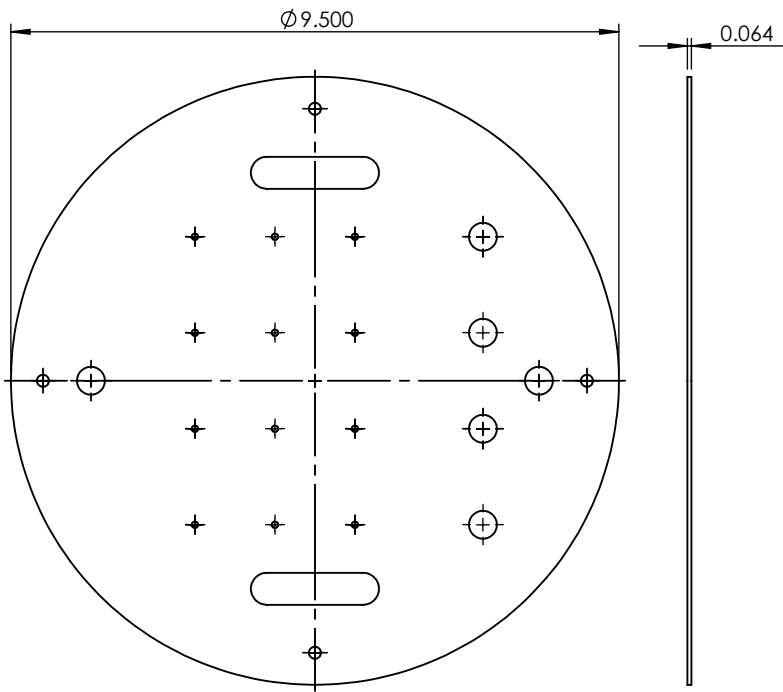
		UNLESS OTHERWISE SPECIFIED:		NAME	DATE
		DIMENSIONS ARE IN INCHES	DRAWN		
		TOLERANCES:	CHECKED		
		FRACTIONAL ±	ENG APPR.		
		ANGULAR: MACH ± BEND ±	MFG APPR.		
		TWO PLACE DECIMAL ±	Q.A.		
		THREE PLACE DECIMAL ±	COMMENTS:		
		INTERPRET GEOMETRIC TOLERANCING PER:			
		MATERIAL			
NEXT ASSY	USED ON	FINISH			
APPLICATION		DO NOT SCALE DRAWING			

**1/2" SQUARE ALUMINUM BAR**

TITLE:  
**EC-ALC-B-MD-12W**

SIZE <b>A</b>	DWG. NO.	REV
------------------	----------	-----

SCALE: 1:3	WEIGHT:	SHEET 5 OF 12
------------	---------	---------------



**PROPRIETARY AND CONFIDENTIAL**  
 THE INFORMATION CONTAINED IN THIS DRAWING IS THE SOLE PROPERTY OF <INSERT COMPANY NAME HERE>. ANY REPRODUCTION IN PART OR AS A WHOLE WITHOUT THE WRITTEN PERMISSION OF <INSERT COMPANY NAME HERE> IS PROHIBITED.

		UNLESS OTHERWISE SPECIFIED:	NAME	DATE	ALUMINUM 0.0635"		
		DIMENSIONS ARE IN INCHES	DRAWN		TITLE:  EC-ALC-B-MD-12W		
		TOLERANCES:	CHECKED				
		FRACTIONAL ±	ENG APPR.				
		ANGULAR: MACH ± BEND ±	MFG APPR.				
		TWO PLACE DECIMAL ±	Q.A.		SIZE	DWG. NO.	REV
		THREE PLACE DECIMAL ±	COMMENTS:		<b>A</b>		
		INTERPRET GEOMETRIC TOLERANCING PER:			SCALE: 1:3	WEIGHT:	SHEET 6 OF 12
		MATERIAL					
NEXT ASSY	USED ON	FINISH					
APPLICATION		DO NOT SCALE DRAWING					

5

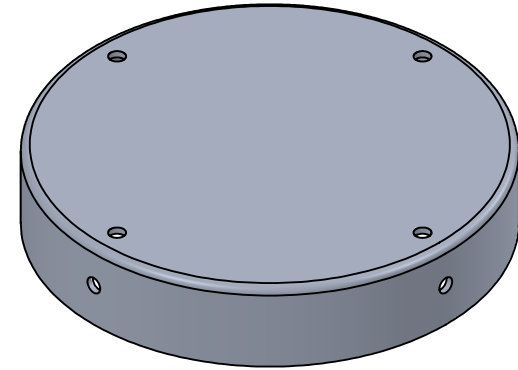
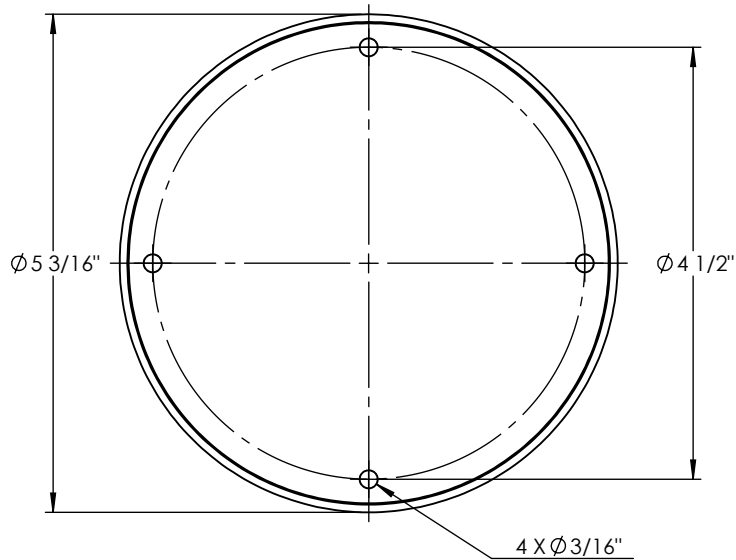
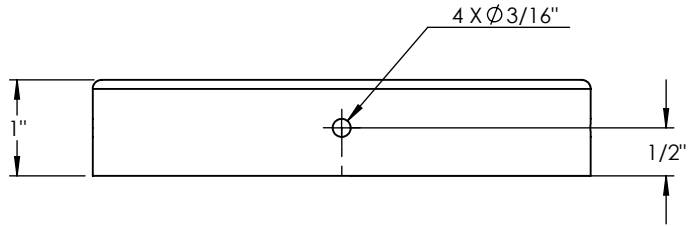
4

3

2

1

ITEM NO.	PART NUMBER	DESCRIPTION	QTY.
1	EC-ALC-B-MD-12W-SPUN FITTER	SPUN ALUMINUM 0.080"	1

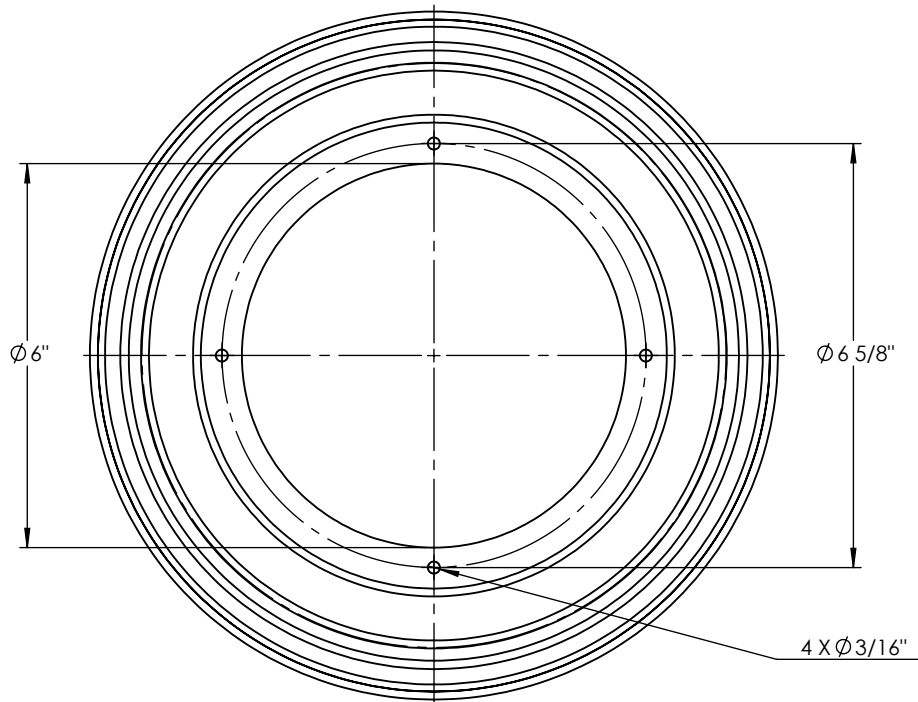
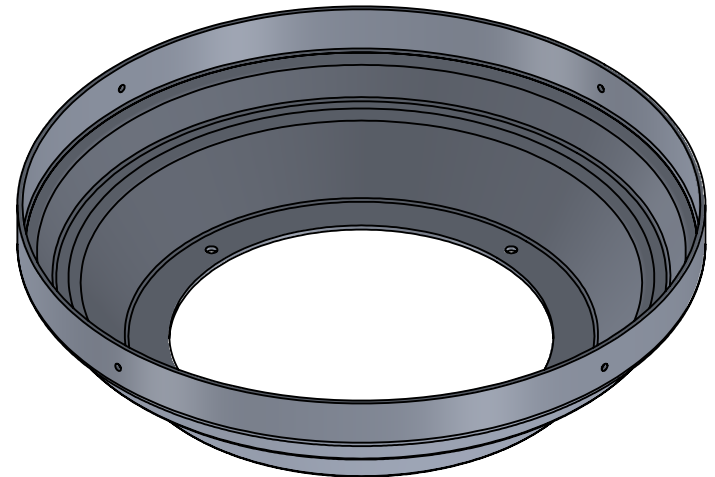
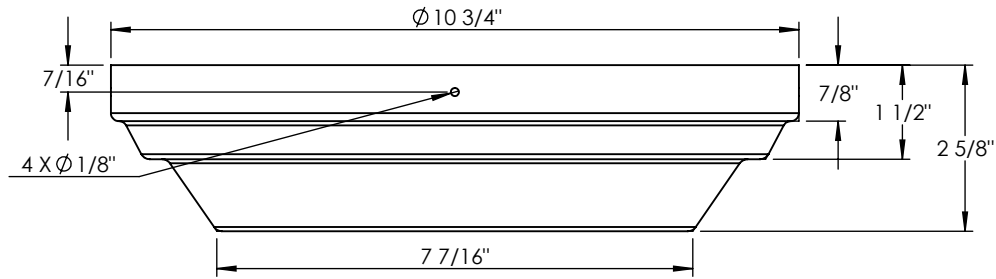


**PROPRIETARY AND CONFIDENTIAL**  
 THE INFORMATION CONTAINED IN THIS DRAWING IS THE SOLE PROPERTY OF <INSERT COMPANY NAME HERE>. ANY REPRODUCTION IN PART OR AS A WHOLE WITHOUT THE WRITTEN PERMISSION OF <INSERT COMPANY NAME HERE> IS PROHIBITED.

		UNLESS OTHERWISE SPECIFIED:	NAME	DATE
		DIMENSIONS ARE IN INCHES TOLERANCES: FRACTIONAL $\pm$ ANGULAR: MACH $\pm$ BEND $\pm$ TWO PLACE DECIMAL $\pm$ THREE PLACE DECIMAL $\pm$	DRAWN	
		INTERPRET GEOMETRIC TOLERANCING PER:	CHECKED	
		MATERIAL	ENG APPR.	
		FINISH	MFG APPR.	
NEXT ASSY	USED ON		Q.A.	
APPLICATION		DO NOT SCALE DRAWING	COMMENTS:	

TITLE:		
SPUN ALUMINUM 0.080"		
EC-ALC-B-MD-12W		
SIZE	DWG. NO.	REV
<b>A</b>		
SCALE: 1:2	WEIGHT:	SHEET 7 OF 12

ITEM NO.	PART NUMBER	DESCRIPTION	QTY.
1	EC-ALC-B-MD-12W-SPUN SEAT BOWL	SPUN ALUMINUM 0.080"	1



**PROPRIETARY AND CONFIDENTIAL**  
 THE INFORMATION CONTAINED IN THIS DRAWING IS THE SOLE PROPERTY OF <INSERT COMPANY NAME HERE>. ANY REPRODUCTION IN PART OR AS A WHOLE WITHOUT THE WRITTEN PERMISSION OF <INSERT COMPANY NAME HERE> IS PROHIBITED.

UNLESS OTHERWISE SPECIFIED:		NAME	DATE
DIMENSIONS ARE IN INCHES		DRAWN	
TOLERANCES:		CHECKED	
FRACTIONAL ±		ENG APPR.	
ANGULAR: MACH ± BEND ±		MFG APPR.	
TWO PLACE DECIMAL ±		Q.A.	
THREE PLACE DECIMAL ±		COMMENTS:	
INTERPRET GEOMETRIC TOLERANCING PER:			
MATERIAL			
FINISH			
NEXT ASSY	USED ON		
APPLICATION	DO NOT SCALE DRAWING		

SPUN ALUMINUM 0.080"		
TITLE:		
EC-ALC-B-MD-12W		
SIZE	DWG. NO.	REV
<b>A</b>		
SCALE: 1:3	WEIGHT:	SHEET 8 OF 12

5

4

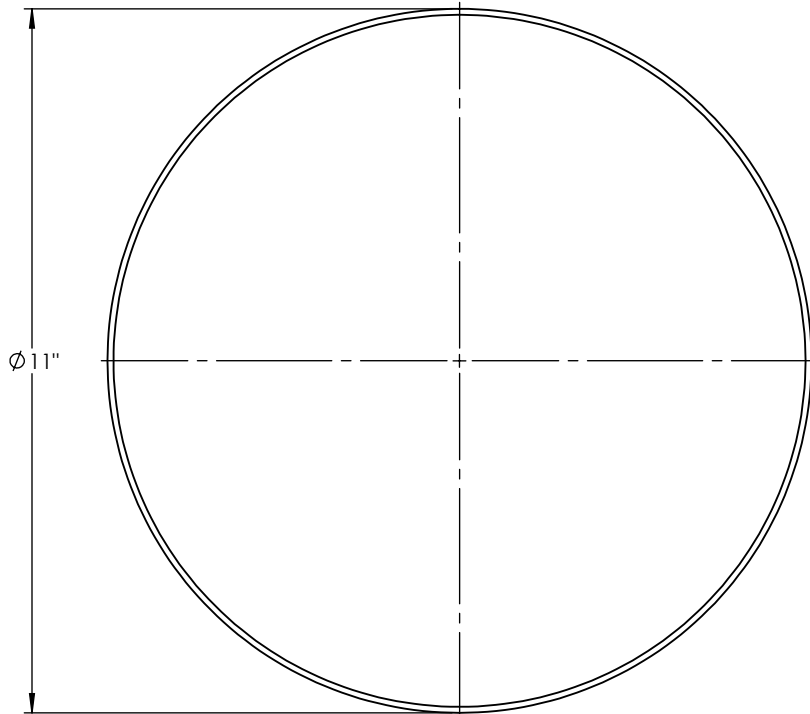
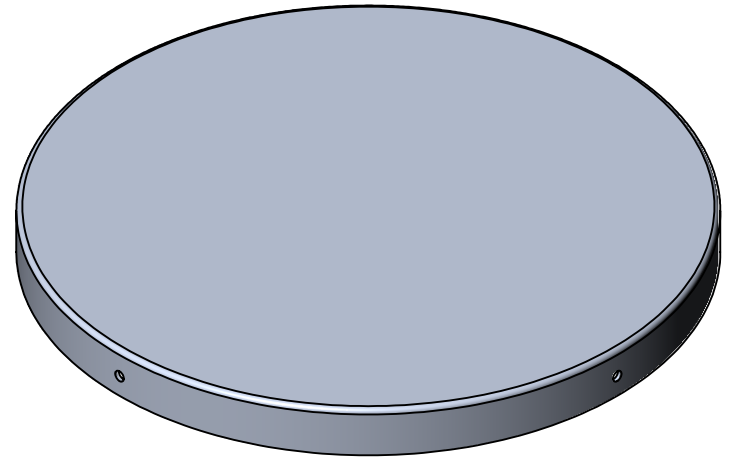
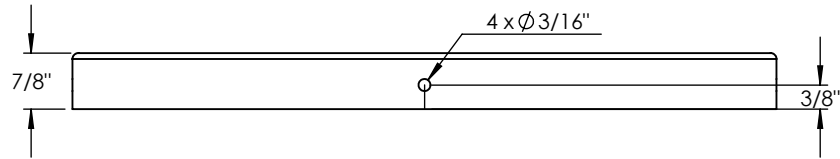
3

2

1



ITEM NO.	PART NUMBER	DESCRIPTION	QTY.
1	EC-ALC-B-MD-12W-SPUN TOP COVER	SPUN ALUMINUM 0.080"	1

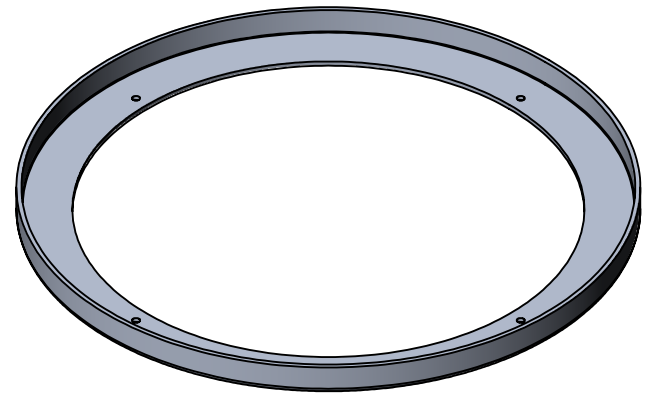
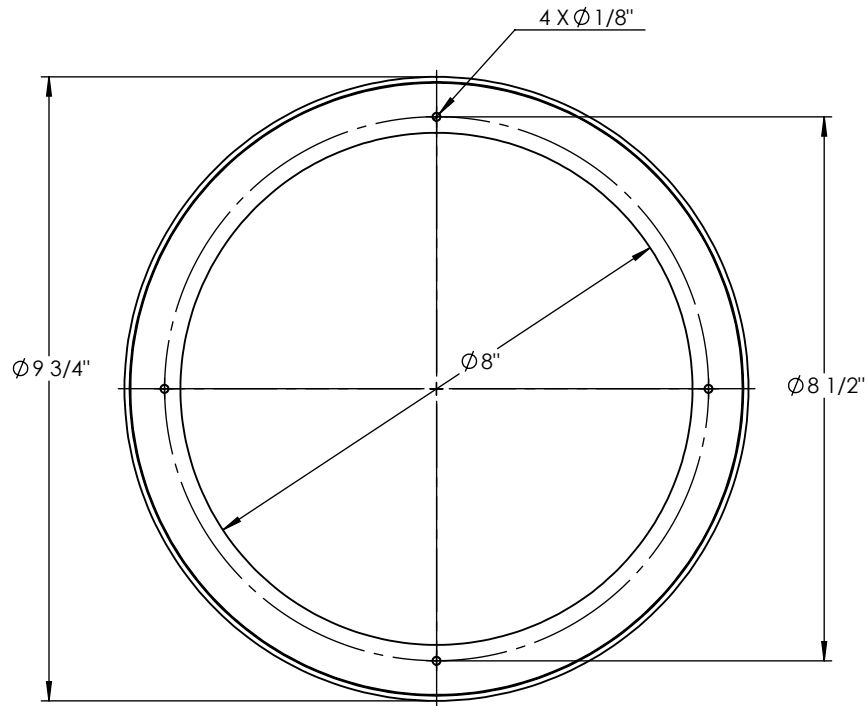
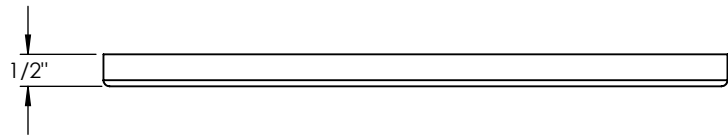


**PROPRIETARY AND CONFIDENTIAL**  
 THE INFORMATION CONTAINED IN THIS DRAWING IS THE SOLE PROPERTY OF <INSERT COMPANY NAME HERE>. ANY REPRODUCTION IN PART OR AS A WHOLE WITHOUT THE WRITTEN PERMISSION OF <INSERT COMPANY NAME HERE> IS PROHIBITED.

		UNLESS OTHERWISE SPECIFIED:	NAME	DATE
		DIMENSIONS ARE IN INCHES TOLERANCES: FRACTIONAL ± ANGULAR: MACH ± BEND ± TWO PLACE DECIMAL ± THREE PLACE DECIMAL ±	DRAWN	
		INTERPRET GEOMETRIC TOLERANCING PER:	CHECKED	
		MATERIAL	ENG APPR.	
		FINISH	MFG APPR.	
			Q.A.	
			COMMENTS:	
NEXT ASSY	USED ON			
APPLICATION	DO NOT SCALE DRAWING			

TITLE:		
SPUN ALUMINUM 0.080"		
EC-ALC-B-MD-12W		
SIZE	DWG. NO.	REV
<b>A</b>		
SCALE: 1:3	WEIGHT:	SHEET 9 OF 12

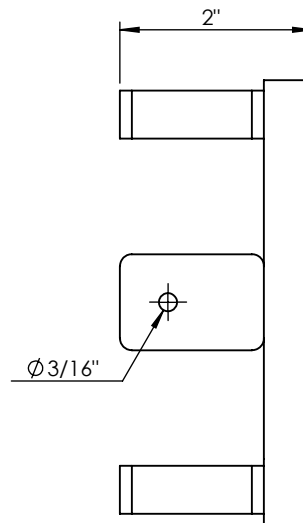
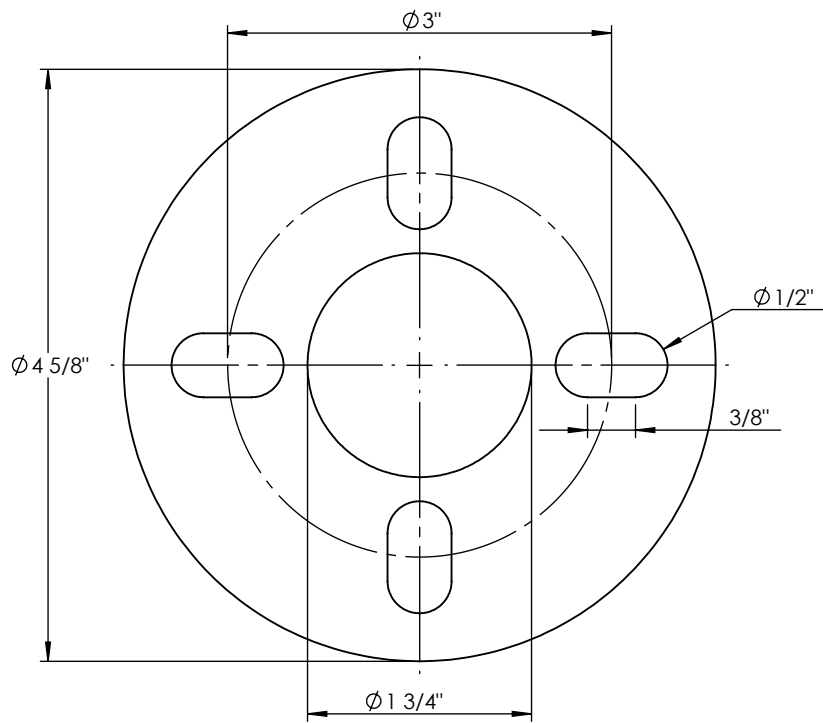
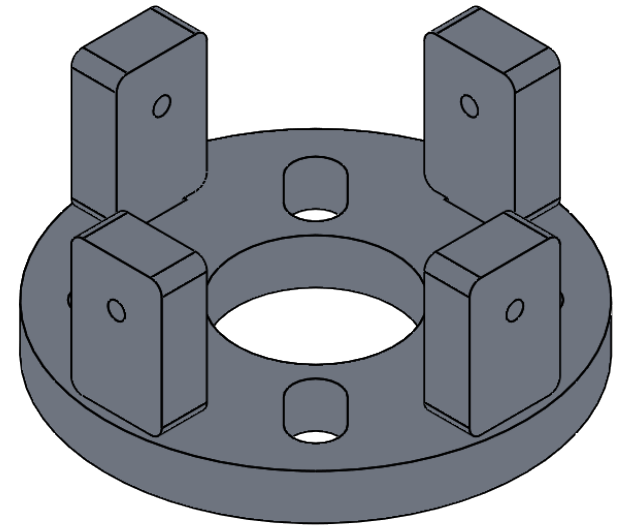
ITEM NO.	PART NUMBER	DESCRIPTION	QTY.
1	EC-ALC-B-MD-20W-SPUN TOP COVER	SPUN ALUMINUM 0.080"	1

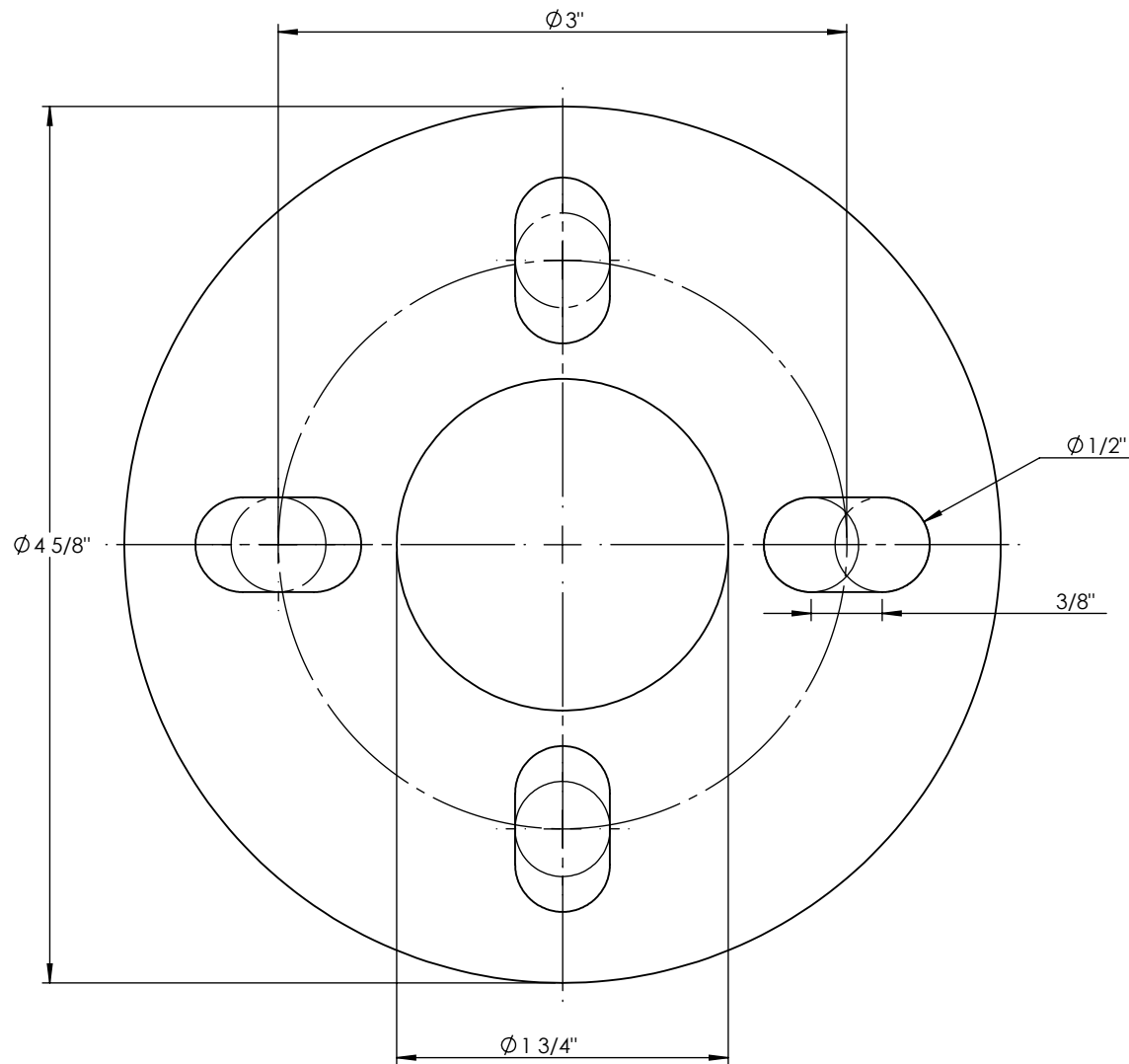


**PROPRIETARY AND CONFIDENTIAL**  
 THE INFORMATION CONTAINED IN THIS DRAWING IS THE SOLE PROPERTY OF <INSERT COMPANY NAME HERE>. ANY REPRODUCTION IN PART OR AS A WHOLE WITHOUT THE WRITTEN PERMISSION OF <INSERT COMPANY NAME HERE> IS PROHIBITED.

		UNLESS OTHERWISE SPECIFIED:	NAME	DATE
		DIMENSIONS ARE IN INCHES TOLERANCES: FRACTIONAL ± ANGULAR: MACH ± BEND ± TWO PLACE DECIMAL ± THREE PLACE DECIMAL ±	DRAWN	
		INTERPRET GEOMETRIC TOLERANCING PER:	CHECKED	
		MATERIAL	ENG APPR.	
		FINISH	MFG APPR.	
			Q.A.	
			COMMENTS:	
NEXT ASSY	USED ON			
APPLICATION	DO NOT SCALE DRAWING			

TITLE:		
SPUN ALUMINUM 0.080"		
EC-ALC-B-MD-12W		
SIZE	DWG. NO.	REV
<b>A</b>		
SCALE: 1:3	WEIGHT:	SHEET 10 OF 12





**3/8" X 12" LONG  
ANCHOR BOLT SIZE**