

ITEM NO.	PART NUMBER	DESCRIPTION	QTY.	CUT
1	EC-VEN-11-32-5-20W-TUBE BODY	8" ALUMINUM POST	1	
2	EC-VEN-11-32-5-20W-SPUN LENS CAP	SPUN ALUMINUM 0.080"	2	
3	EC-VEN-11-32-5-20W-HEAD BASE PLATE	ALUMINUM 0.125" PLATE	1	
4	EC-VEN-11-32-5-20W-PYRAMID CAP PLATE	ALUMINUM 0.125" PLATE	1	
5	EC-VEN-11-32-5-20W-ANCHOR PLATE	ALUMINUM 0.125" PLATE	1	
6	EC-VEN-11-32-5-20W-PYRAMID CAP	ALUMINUM 0.0635"	1	
7	EC-VEN-11-32-5-20W-HEAD BASE	ALUMINUM 0.0635"	1	
8	EC-VEN-11-32-5-20W-LOUVER	ALUMINUM 0.0635"	5	
9	EC-VEN-11-32-5-20W-TUBE BRACKET	ALUMINUM 0.0635"	1	
10	EC-VEN-11-32-5-20W-DRIVER BRACKET	ALUMINUM 0.0635"	1	
11	EC-VEN-11-32-5-20W-THREADED ROD	3/8" THREADED ROD	4	
12	EC-VEN-11-32-5-20W-0.500" ROUND TUBE	1/2" ALUMINUM TUBE	24	
13	EC-VEN-11-32-5-20W-SQUARE TUBE	1" ALUMINUM TUBE	1	
14	EC-VEN-11-32-5-20W-SPLBP-ACRYLIC	ACRYLIC	1	
15	NIPPLE		1	
16	ESPEN VEL29070MVH-1	DRIVER	1	
17	AItailed_PN1011_RevB	LED	4	

UNLESS OTHERWISE SPECIFIED:

DIMENSIONS ARE IN INCHES
 TOLERANCES:
 FRACTIONAL ± .003
 ANGULAR: MACH ± .01 BEND ±
 TWO PLACE DECIMAL ±
 THREE PLACE DECIMAL ± .001

INTERPRET GEOMETRIC
 TOLERANCING PER:
 MATERIAL

FINISH

ALL BEND RADIUS .030"

APPLICATION

DO NOT SCALE DRAWING

	NAME	DATE
DRAWN		
CHECKED		
ENG APPR.		
MFG APPR.		
Q.A.		
COMMENTS:		

TITLE:

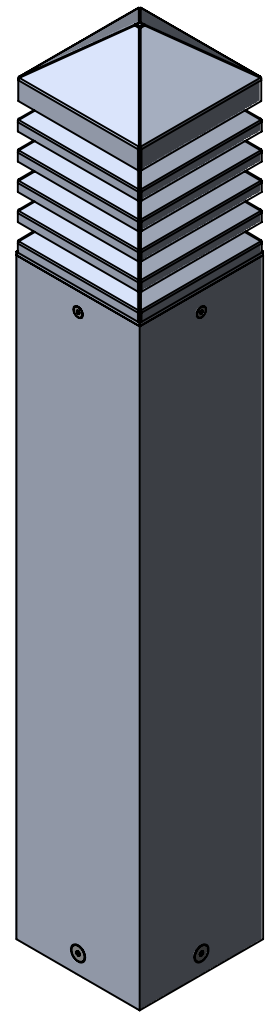
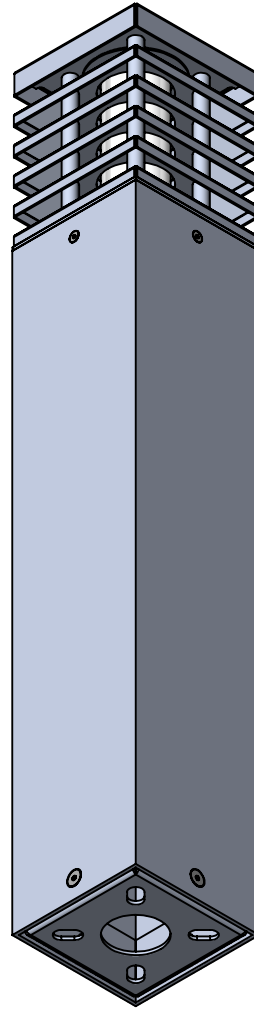
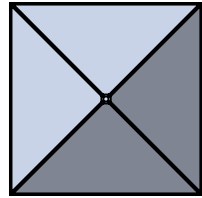
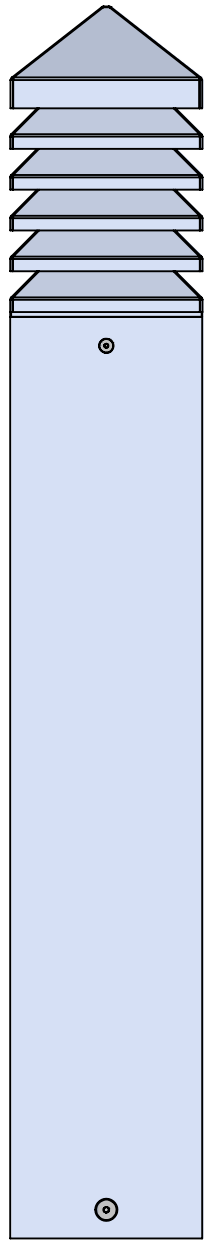
EC-VEN-11-32-5-20W

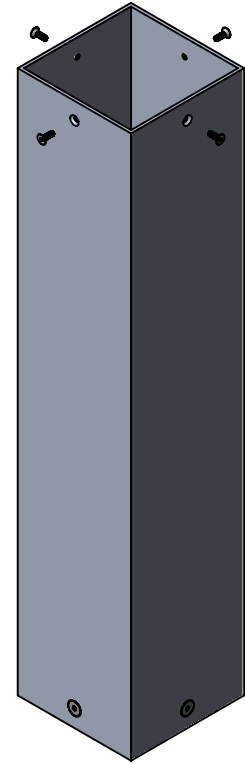
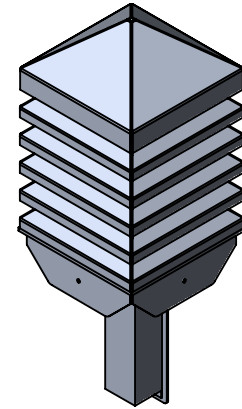
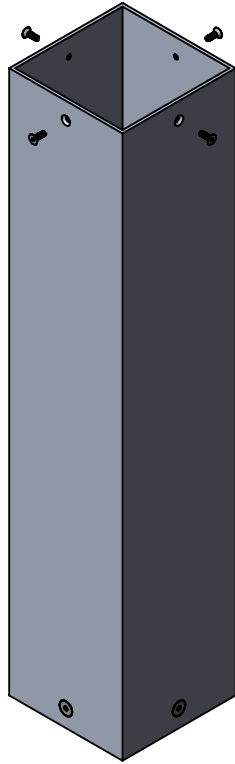
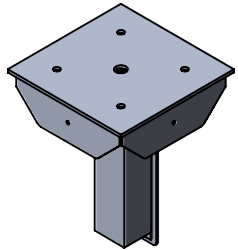
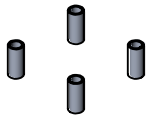
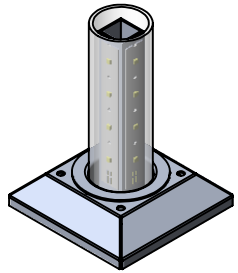
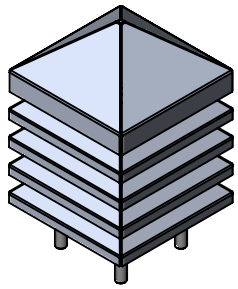
SIZE	DWG. NO.	REV
A		

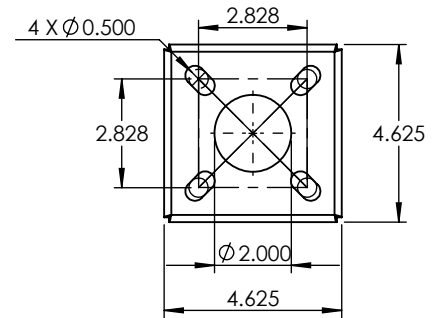
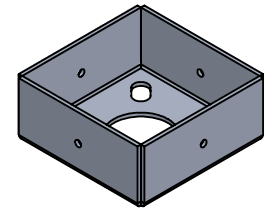
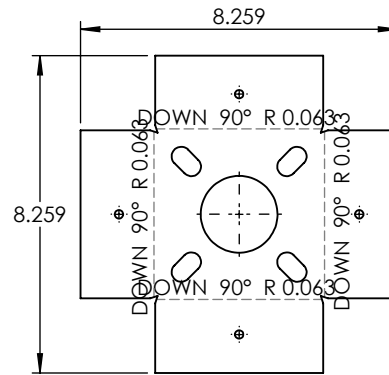
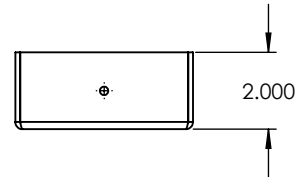
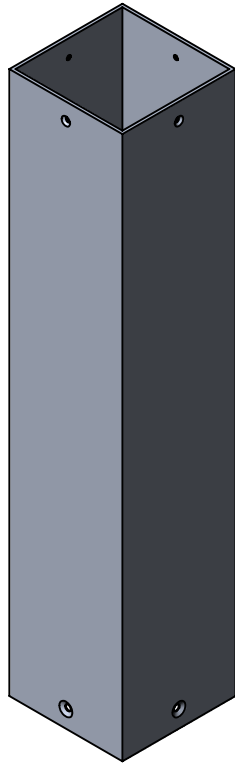
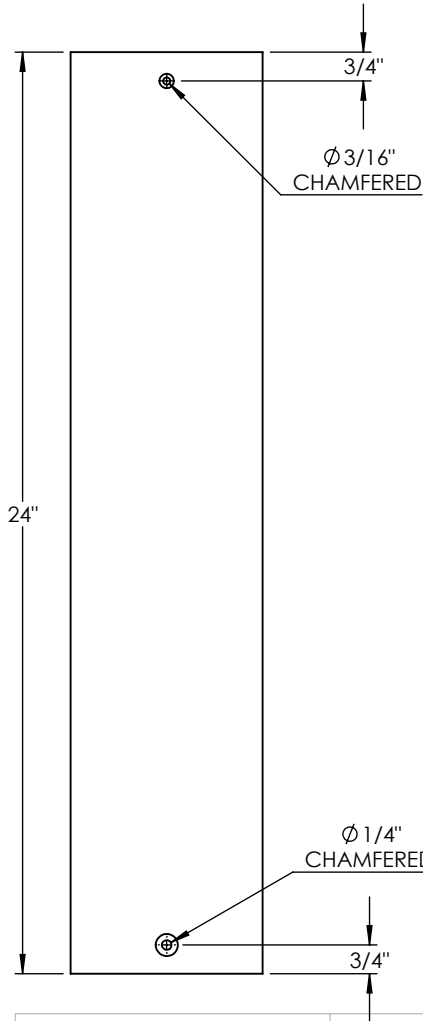
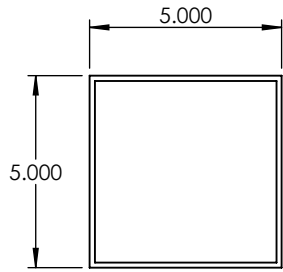
SCALE: 1:8 WEIGHT: SHEET 1 OF 12



EVERGREEN LIGHTING







PROPRIETARY AND CONFIDENTIAL
 THE INFORMATION CONTAINED IN THIS DRAWING IS THE SOLE PROPERTY OF <INSERT COMPANY NAME HERE>. ANY REPRODUCTION IN PART OR AS A WHOLE WITHOUT THE WRITTEN PERMISSION OF <INSERT COMPANY NAME HERE> IS PROHIBITED.

NEXT ASSY	USED ON
APPLICATION	

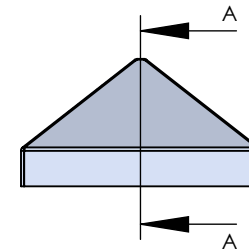
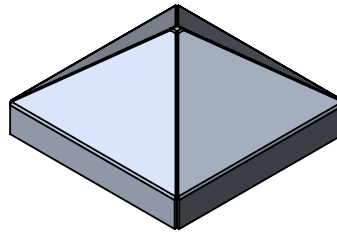
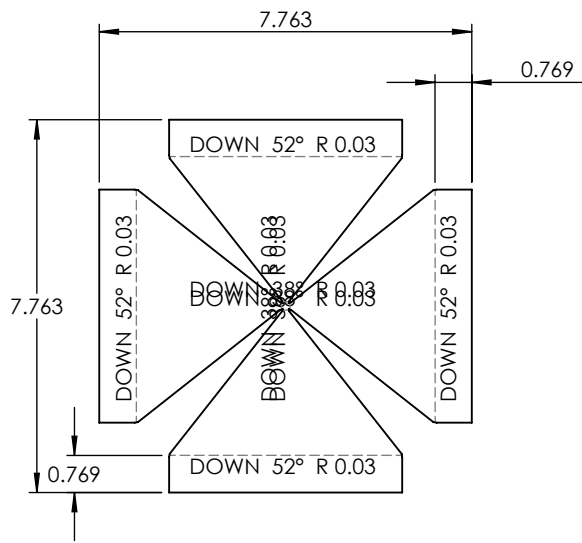
UNLESS OTHERWISE SPECIFIED:	NAME	DATE
DIMENSIONS ARE IN INCHES	DRAWN	
TOLERANCES:	CHECKED	
FRACTIONAL ±	ENG APPR.	
ANGULAR: MACH ± BEND ±	MFG APPR.	
TWO PLACE DECIMAL ±	Q.A.	
THREE PLACE DECIMAL ±	COMMENTS:	
INTERPRET GEOMETRIC TOLERANCING PER:		
MATERIAL		
FINISH		
DO NOT SCALE DRAWING		

8" ALUMINUM POST

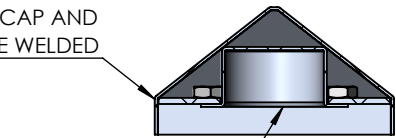
TITLE:

EC-VEN-11-32-5-20W

SIZE	DWG. NO.	REV
A		
SCALE: 1:5	WEIGHT:	SHEET 4 OF 12

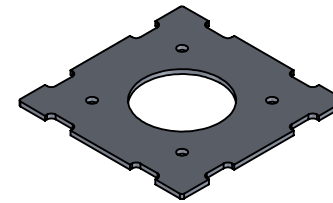
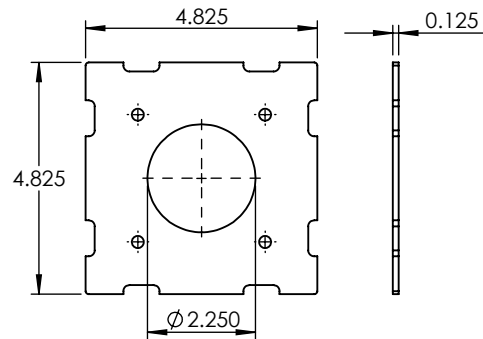
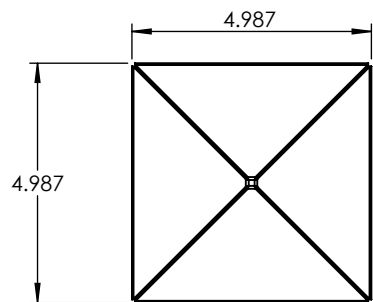
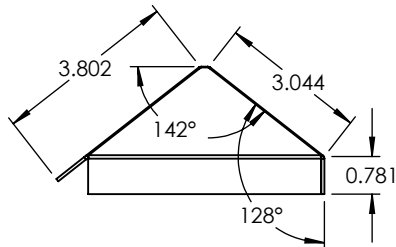


PYRAMID CAP AND
CAP PLATE WELDED



SPUN LENS CAP
WELDED TO PLATE

SECTION A-A



UNLESS OTHERWISE SPECIFIED:

DIMENSIONS ARE IN INCHES
TOLERANCES:
FRACTIONAL ±
ANGULAR: MACH ± BEND ±
TWO PLACE DECIMAL ±
THREE PLACE DECIMAL ±

INTERPRET GEOMETRIC
TOLERANCING PER:

MATERIAL

FINISH

DO NOT SCALE DRAWING

NAME

DATE

DRAWN

CHECKED

ENG APPR.

MFG APPR.

Q.A.

COMMENTS:

ALUMINUM 0.0635"

TITLE:

EC-VEN-11-32-5-20W

SIZE
A

DWG. NO.

REV

SCALE: 1:4

WEIGHT:

SHEET 5 OF 12

PROPRIETARY AND CONFIDENTIAL
THE INFORMATION CONTAINED IN THIS
DRAWING IS THE SOLE PROPERTY OF
<INSERT COMPANY NAME HERE>. ANY
REPRODUCTION IN PART OR AS A WHOLE
WITHOUT THE WRITTEN PERMISSION OF
<INSERT COMPANY NAME HERE> IS
PROHIBITED.

NEXT ASSY

USED ON

APPLICATION

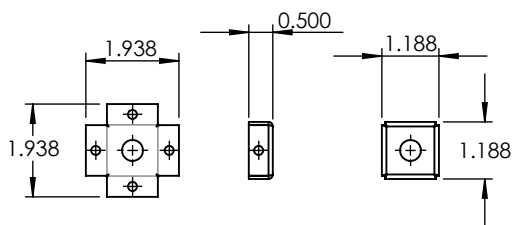
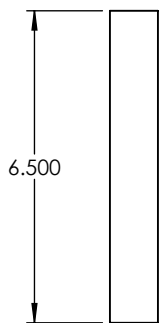
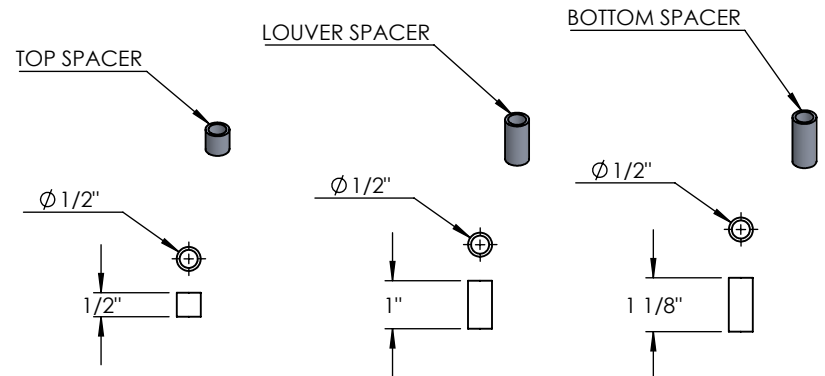
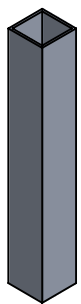
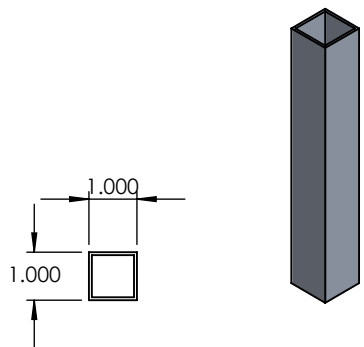
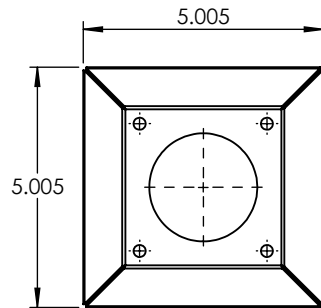
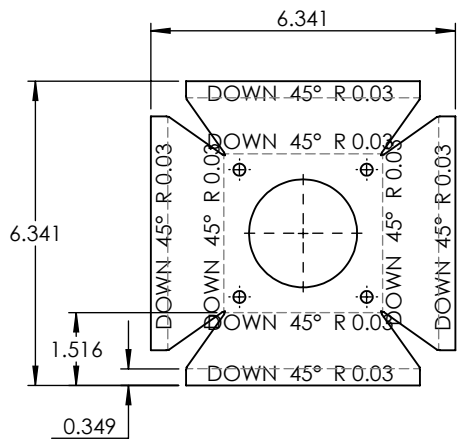
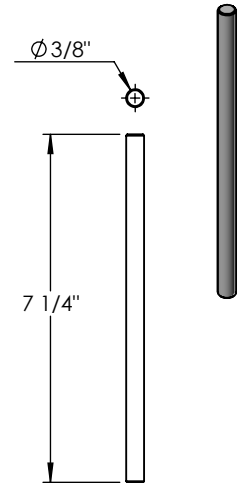
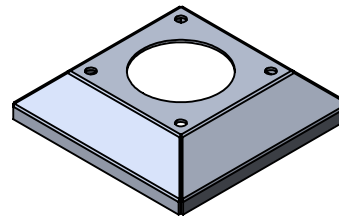
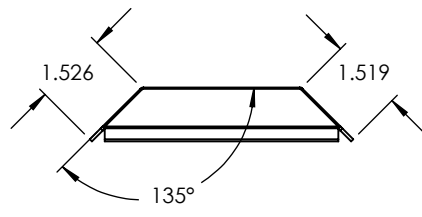
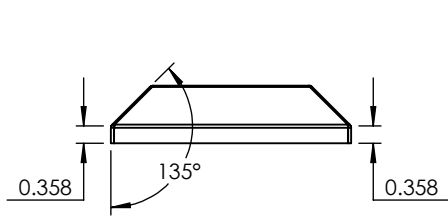
5

4

3

2

1



UNLESS OTHERWISE SPECIFIED:

DIMENSIONS ARE IN INCHES
 TOLERANCES:
 FRACTIONAL ±
 ANGULAR: MACH ± BEND ±
 TWO PLACE DECIMAL ±
 THREE PLACE DECIMAL ±

INTERPRET GEOMETRIC TOLERANCING PER:

MATERIAL

FINISH

DO NOT SCALE DRAWING

	NAME	DATE
DRAWN		
CHECKED		
ENG APPR.		
MFG APPR.		
Q.A.		
COMMENTS:		

ALUMINUM 0.0635"

TITLE:

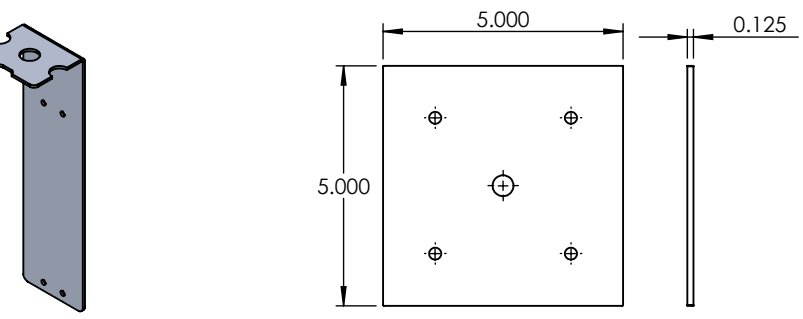
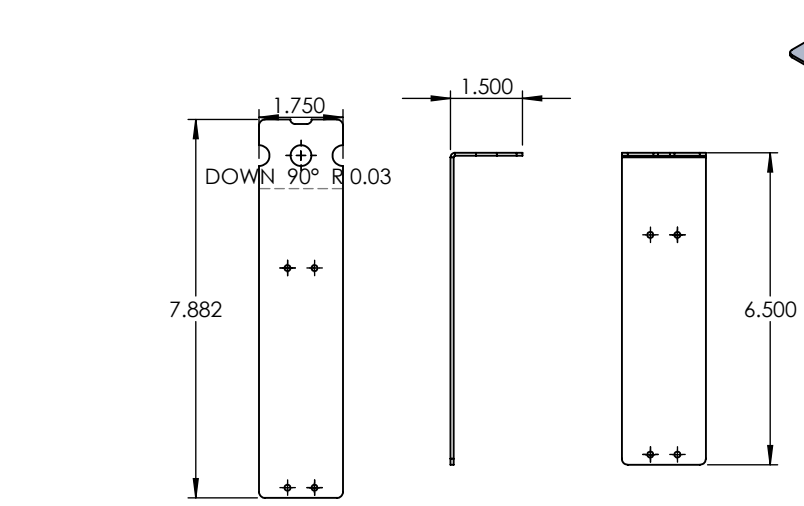
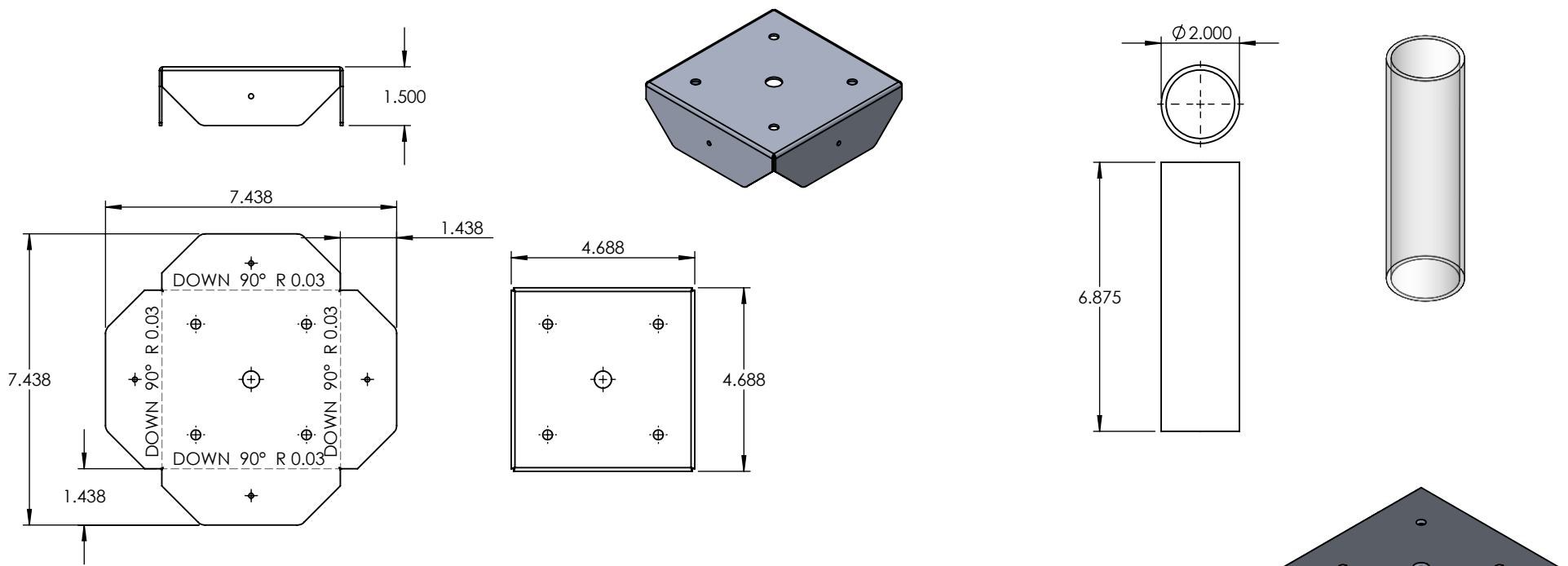
EC-VEN-11-32-5-20W

SIZE	DWG. NO.	REV
A		

SCALE: 1:4 WEIGHT: SHEET 6 OF 12

PROPRIETARY AND CONFIDENTIAL
 THE INFORMATION CONTAINED IN THIS DRAWING IS THE SOLE PROPERTY OF <INSERT COMPANY NAME HERE>. ANY REPRODUCTION IN PART OR AS A WHOLE WITHOUT THE WRITTEN PERMISSION OF <INSERT COMPANY NAME HERE> IS PROHIBITED.

NEXT ASSY	USED ON	APPLICATION



UNLESS OTHERWISE SPECIFIED:
 DIMENSIONS ARE IN INCHES
 TOLERANCES:
 FRACTIONAL ±
 ANGULAR: MACH ± BEND ±
 TWO PLACE DECIMAL ±
 THREE PLACE DECIMAL ±

INTERPRET GEOMETRIC TOLERANCING PER:
 MATERIAL
 FINISH
 APPLICATION
 DO NOT SCALE DRAWING

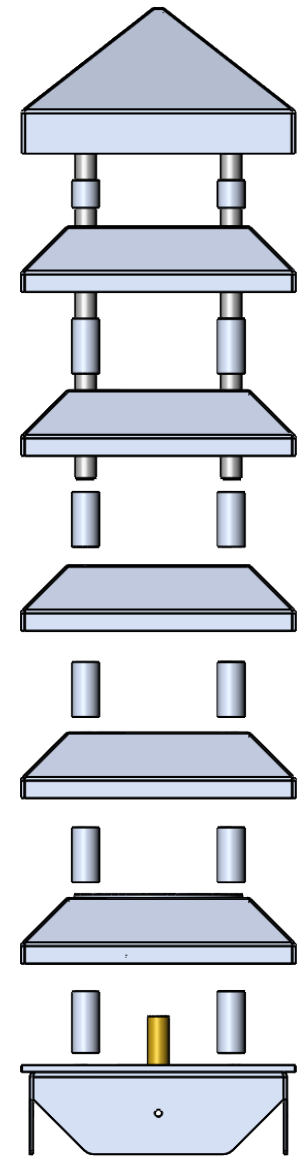
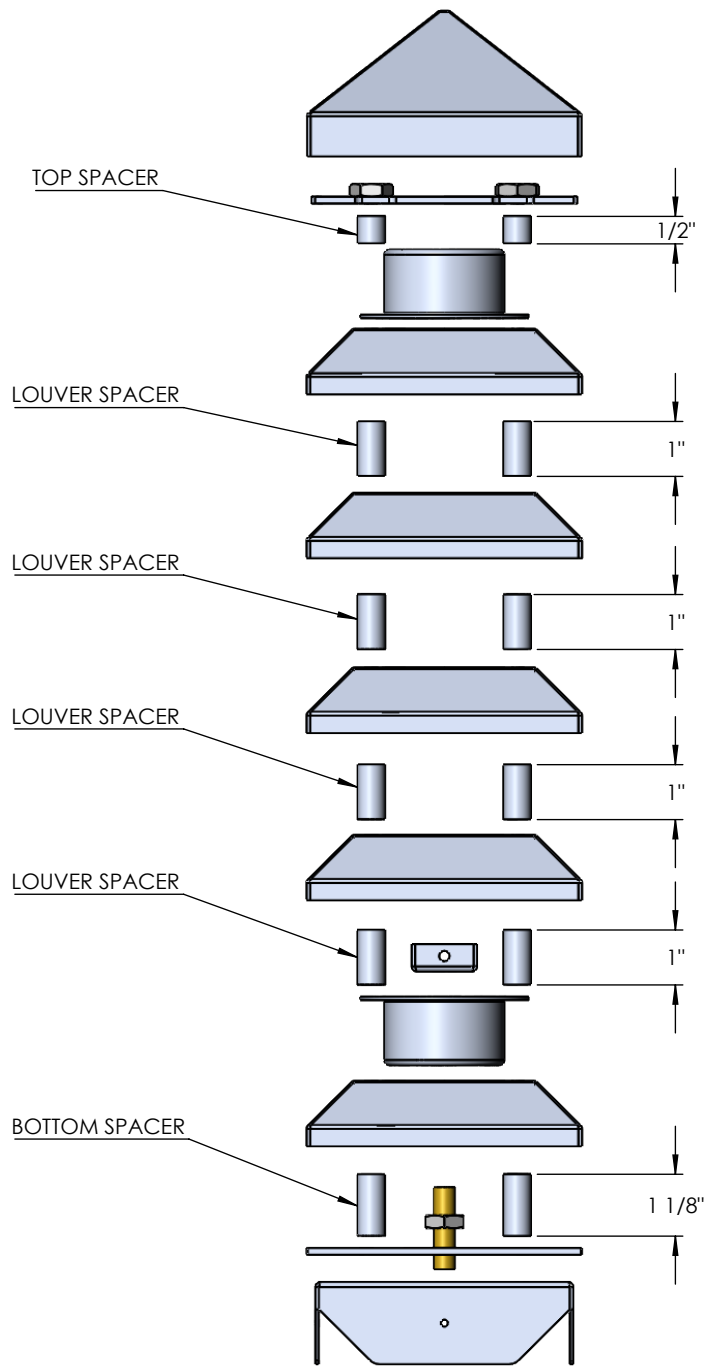
	NAME	DATE
DRAWN		
CHECKED		
ENG APPR.		
MFG APPR.		

Q.A.
 COMMENTS:

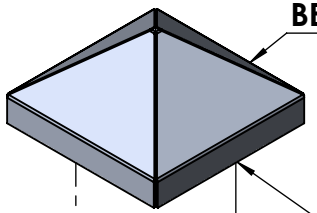
ALUMINUM 0.0635"		
TITLE: EC-VEN-11-32-5-20W		
SIZE A	DWG. NO.	REV
SCALE: 1:4	WEIGHT:	SHEET 7 OF 12

PROPRIETARY AND CONFIDENTIAL
 THE INFORMATION CONTAINED IN THIS DRAWING IS THE SOLE PROPERTY OF <INSERT COMPANY NAME HERE>. ANY REPRODUCTION IN PART OR AS A WHOLE WITHOUT THE WRITTEN PERMISSION OF <INSERT COMPANY NAME HERE> IS PROHIBITED.

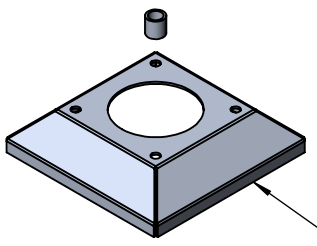
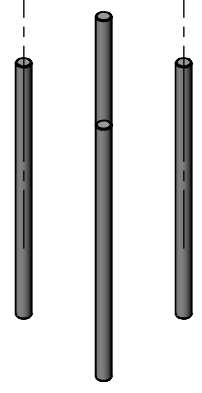
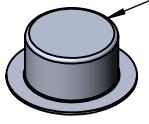
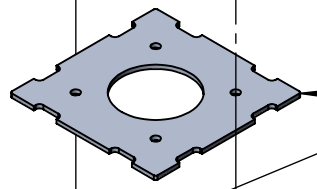
NEXT ASSY	USED ON
APPLICATION	



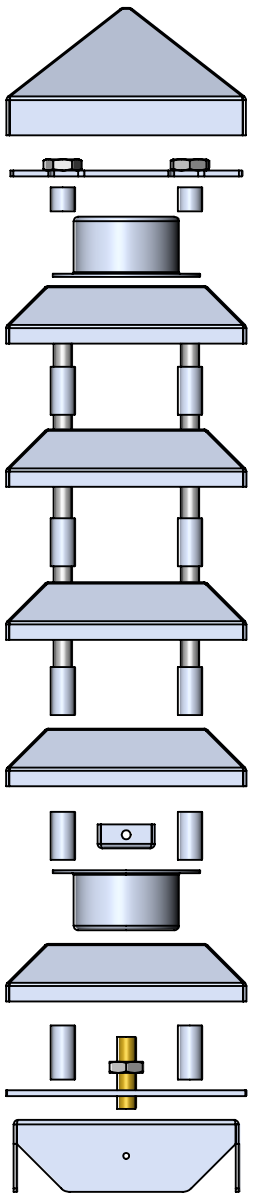
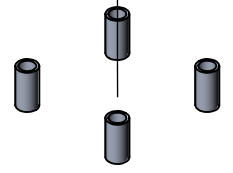
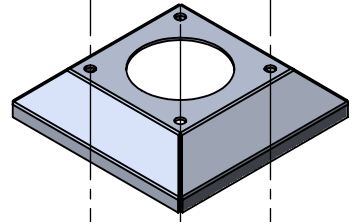
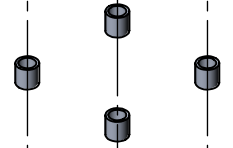
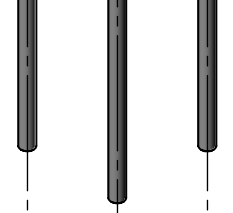
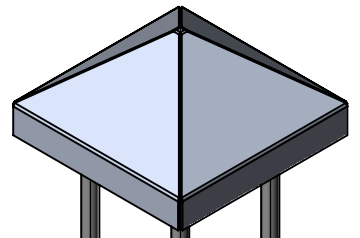
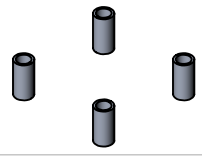
ALL CAP EDGES NEED TO BE WELDED AND CLEANED

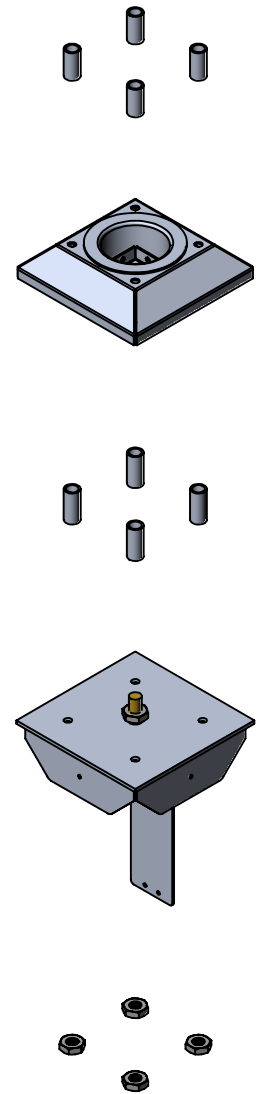
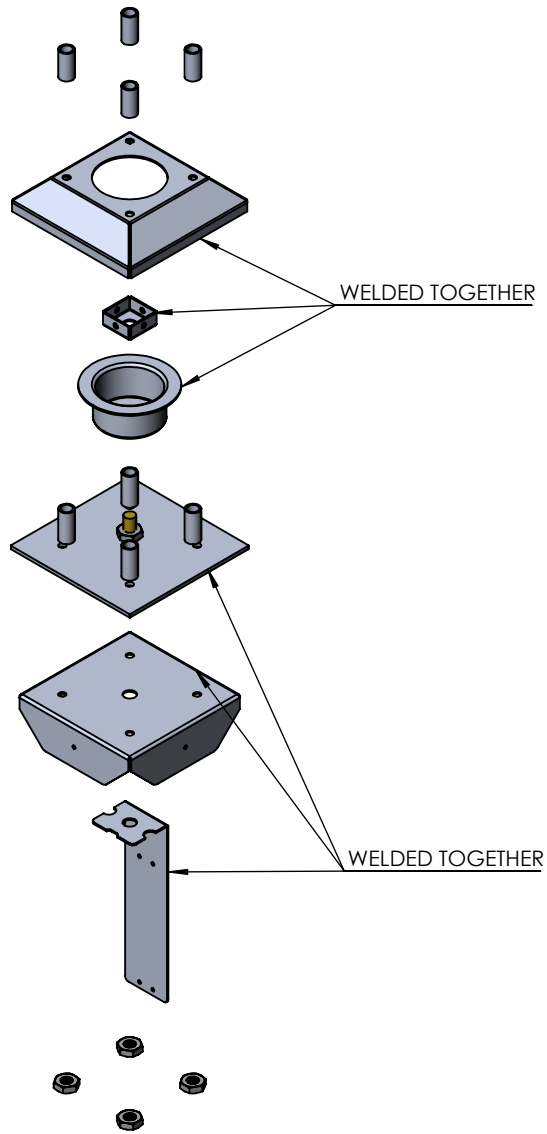
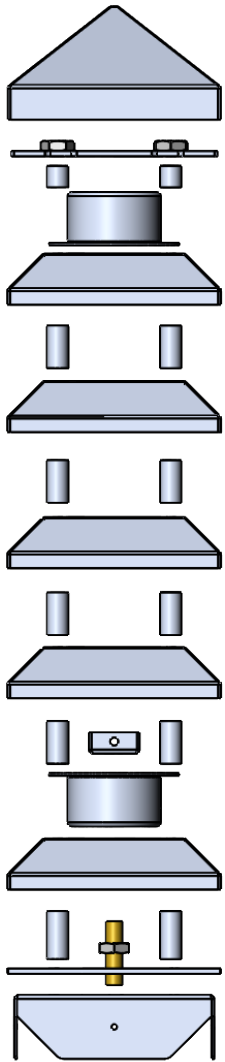


WELDED AS ONE

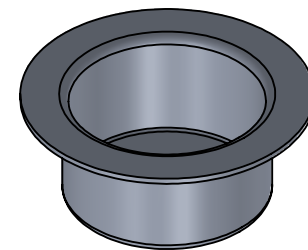
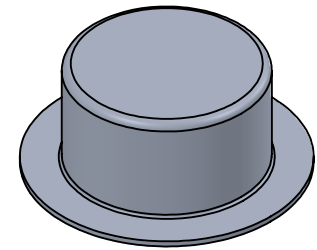
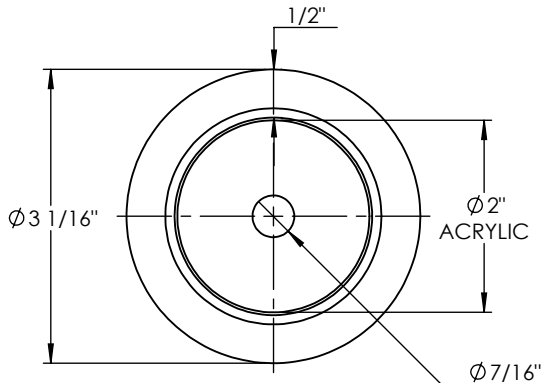
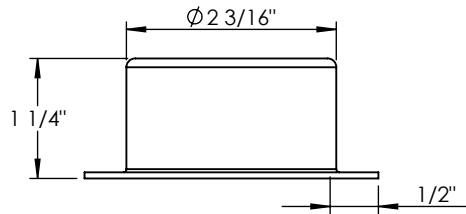


ALL LOUVER EDGES NEED TO BE WELDED AND CLEANED





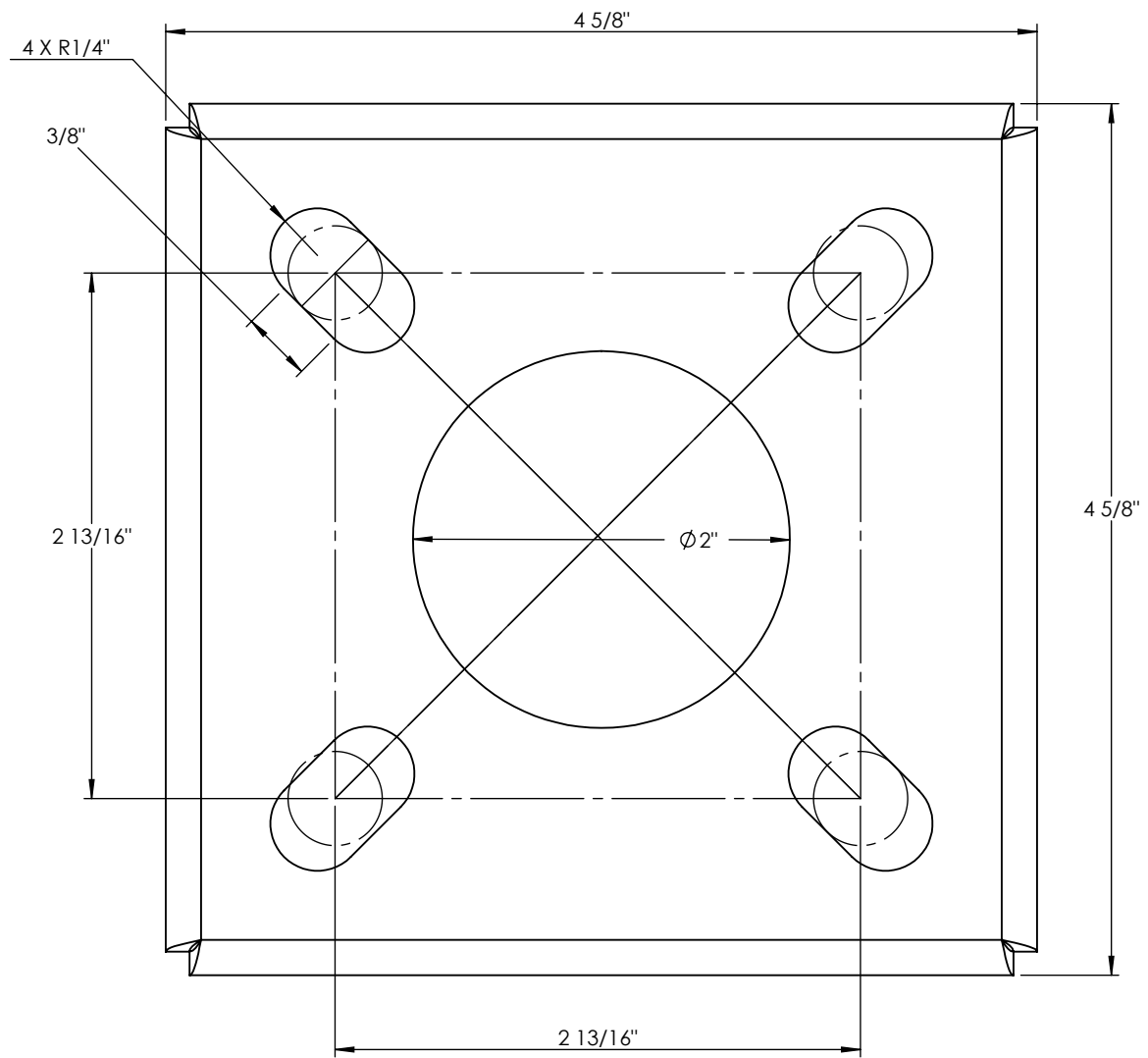
ITEM NO.	PART NUMBER	DESCRIPTION	QTY.
1	EC-VEN-11-32-5-20W-SPUN LENS CAP	SPUN ALUMINUM 0.080"	1



PROPRIETARY AND CONFIDENTIAL
 THE INFORMATION CONTAINED IN THIS DRAWING IS THE SOLE PROPERTY OF <INSERT COMPANY NAME HERE>. ANY REPRODUCTION IN PART OR AS A WHOLE WITHOUT THE WRITTEN PERMISSION OF <INSERT COMPANY NAME HERE> IS PROHIBITED.

		UNLESS OTHERWISE SPECIFIED:		NAME	DATE
		DIMENSIONS ARE IN INCHES	DRAWN		
		TOLERANCES:	CHECKED		
		FRACTIONAL ±	ENG APPR.		
		ANGULAR: MACH ± BEND ±	MFG APPR.		
		TWO PLACE DECIMAL ±	Q.A.		
		THREE PLACE DECIMAL ±	COMMENTS:		
		INTERPRET GEOMETRIC TOLERANCING PER:			
		MATERIAL			
NEXT ASSY	USED ON	FINISH			
APPLICATION		DO NOT SCALE DRAWING			

SPUN ALUMINUM 0.080"		
TITLE:		
EC-VEN-11-32-5-20W		
SIZE	DWG. NO.	REV
A		
SCALE: 1:2	WEIGHT:	SHEET 11 OF 12



**3/8" X 12" LONG
ANCHOR BOLT SIZE**