

ITEM NO.	PART NUMBER	DESCRIPTION	QTY.	CUT
1	STNLP-7"-10W-AA-A-XXK-SPUN COVER	SPUN ALUMINUM 0.080"	1	
2	STNLP-7"-10W-AA-A-XXK-SPUN BACKPAN	SPUN ALUMINUM 0.080"	1	
3	STNLP-7"-10W-AA-A-XXK-ACRYLIC	ACRYLIC LENS	1	
4	92268A180	Press-Fit Nuts for Sheet Metal	8	
5	92949A194	18-8 SS Hex Drive Screw	4	
6	92949A194	HEX ROUNDED SCREWS (#8-32 THREAD) 3/8" L	4	
7	98164A143	ROUNDED SCREWS (#8-32 THREAD) 1" L	2	
8	90866A009	Zinc-Plated Steel Wing Nut	4	
9	AC15CD350AT2S LED DRIVER	DRIVER	1	
10	PCN-1300-54X.2-6-350	10-WATT LED PUCK	1	

UNLESS OTHERWISE SPECIFIED:

DIMENSIONS ARE IN INCHES
 TOLERANCES:
 FRACTIONAL ± .003
 ANGULAR: MACH ± .01 BEND ±
 TWO PLACE DECIMAL ±
 THREE PLACE DECIMAL ±.001

INTERPRET GEOMETRIC
 TOLERANCING PER:
 MATERIAL

FINISH

	NAME	DATE
DRAWN		
CHECKED		
ENG APPR.		
MFG APPR.		
Q.A.		

COMMENTS:

TITLE:

STNLP-7"-10W-AA-A-XXK

SIZE	DWG. NO.	REV
A		

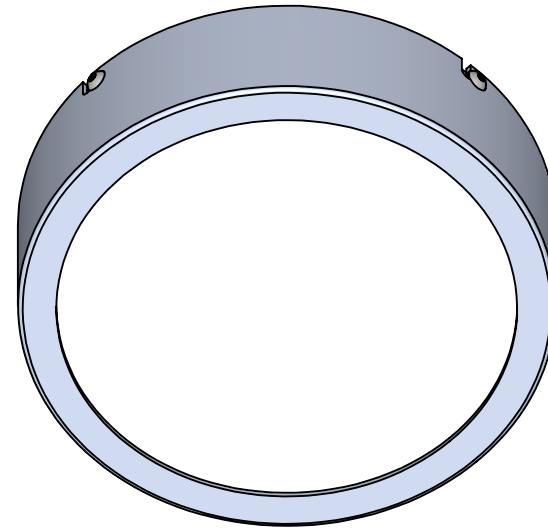
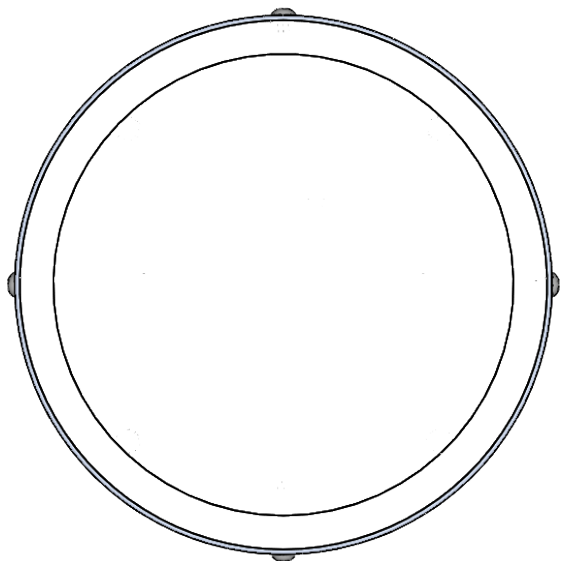
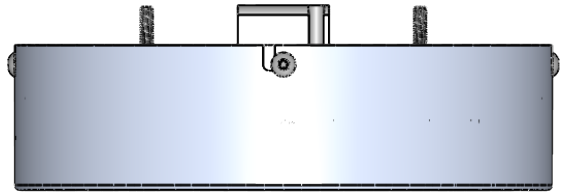
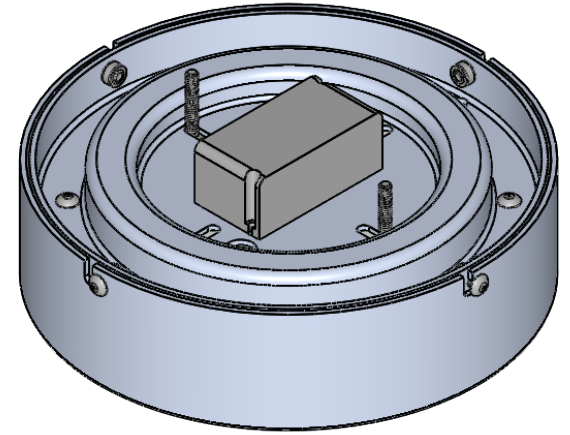
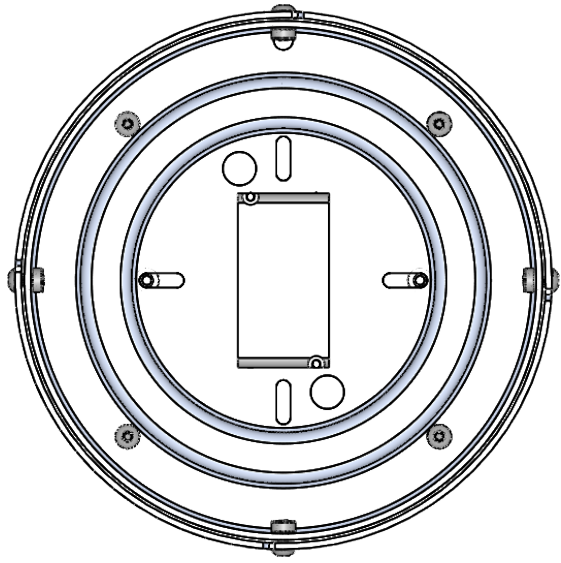
SCALE: 1:3.5 WEIGHT: SHEET 1 OF 12

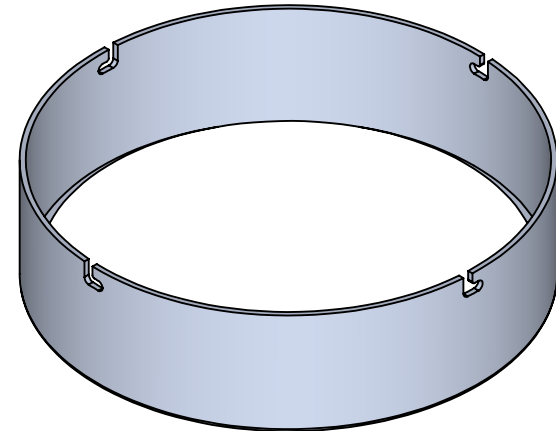
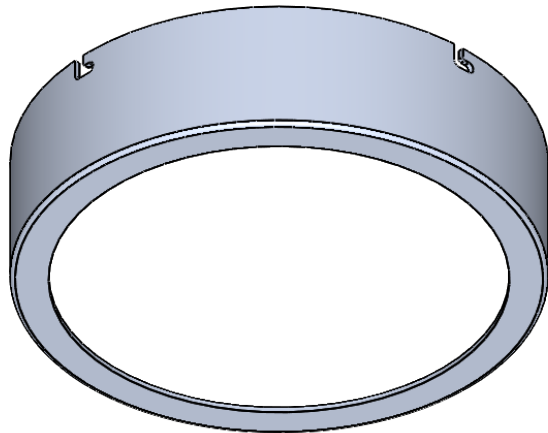
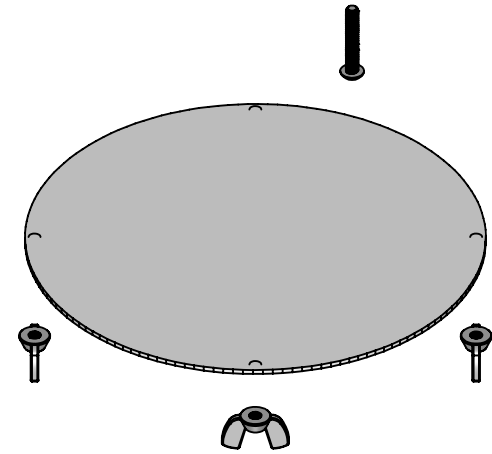
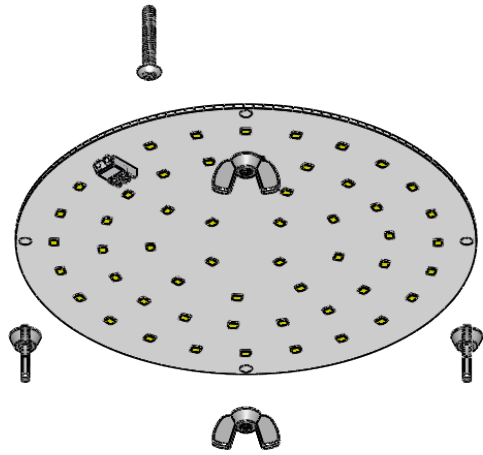
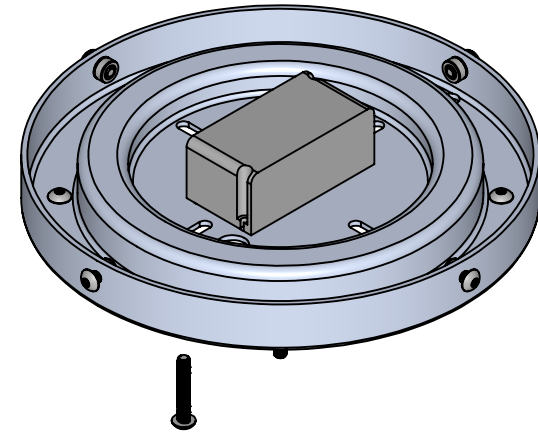
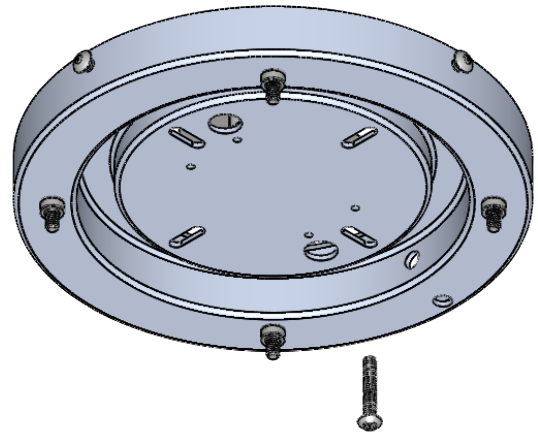


ALL BEND RADIUS .030"

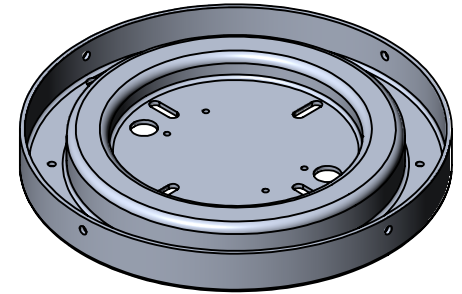
APPLICATION

DO NOT SCALE DRAWING

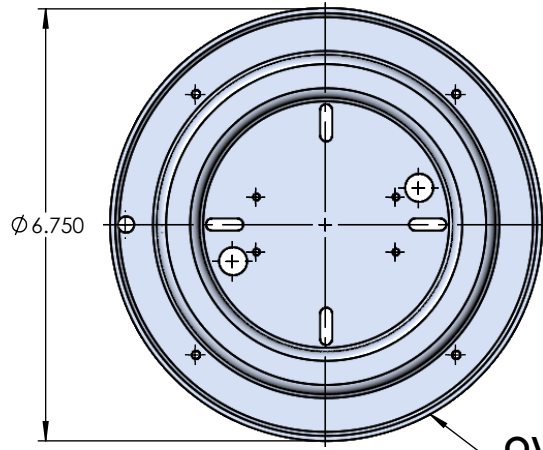
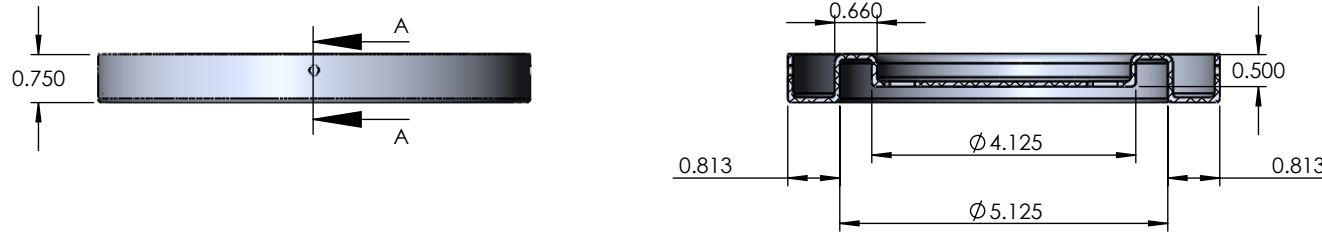




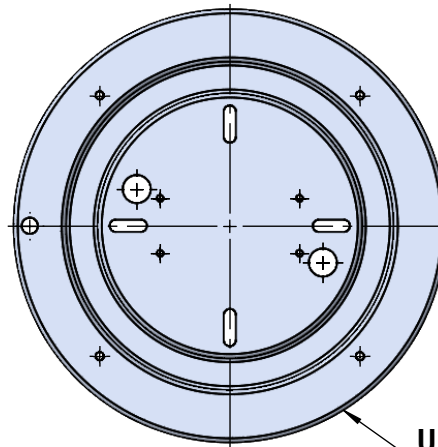
ITEM NO.	PART NUMBER	DESCRIPTION	QTY.
1	STNLP-7"-10W-AA-A-XXK-SPUN BACKPAN	SPUN ALUMINUM 0.080"	1



SECTION A-A



OVERHEAD VIEW



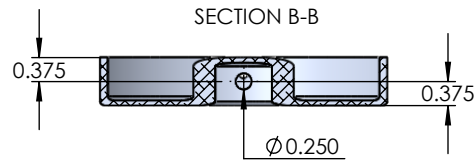
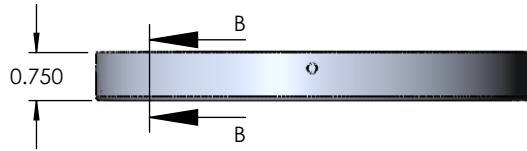
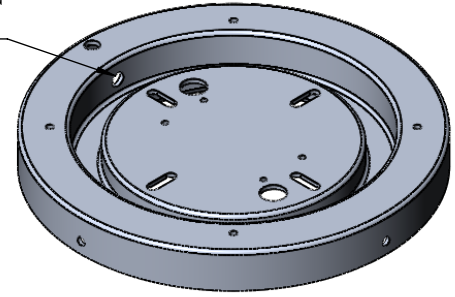
UNDERSIDE VIEW

PROPRIETARY AND CONFIDENTIAL
 THE INFORMATION CONTAINED IN THIS DRAWING IS THE SOLE PROPERTY OF <INSERT COMPANY NAME HERE>. ANY REPRODUCTION IN PART OR AS A WHOLE WITHOUT THE WRITTEN PERMISSION OF <INSERT COMPANY NAME HERE> IS PROHIBITED.

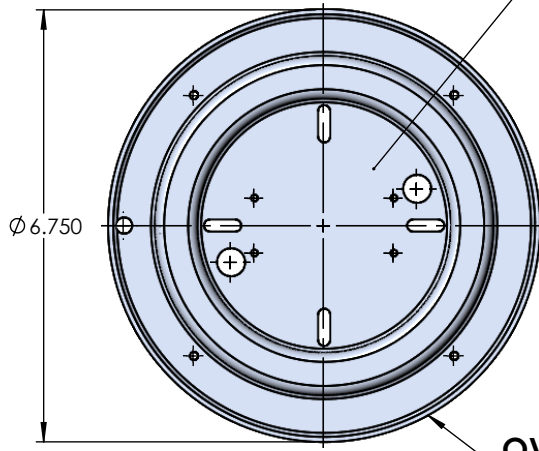
		UNLESS OTHERWISE SPECIFIED:	NAME	DATE	SPUN ALUMINUM 0.080"	
		DIMENSIONS ARE IN INCHES	DRAWN		TITLE:	
		TOLERANCES:	CHECKED		STNLP-7"-10W-AA-A-XXK	
		FRACTIONAL ±	ENG APPR.		SIZE	DWG. NO.
		ANGULAR: MACH ± BEND ±	MFG APPR.		A	REV
		TWO PLACE DECIMAL ±	Q.A.		SCALE: 1:3	WEIGHT:
		THREE PLACE DECIMAL ±	COMMENTS:			SHEET 4 OF 12
		INTERPRET GEOMETRIC TOLERANCING PER:				
		MATERIAL				
	NEXT ASSY	FINISH				
		USED ON				
	APPLICATION	DO NOT SCALE DRAWING				

ITEM NO.	PART NUMBER	DESCRIPTION	QTY.
1	STNLP-7"-10W-AA-A-XXK-SPUN BACKPAN	SPUN ALUMINUM 0.080"	1

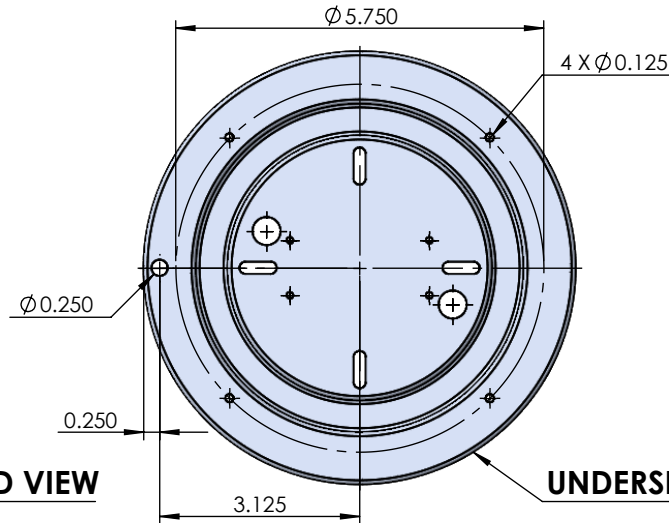
SECTION B-B HOLE ON
INNER WALL ONLY



ALL INNER HOLES/SLOTS DETERMINED BY
BLANKS OR BY TEMPLATE



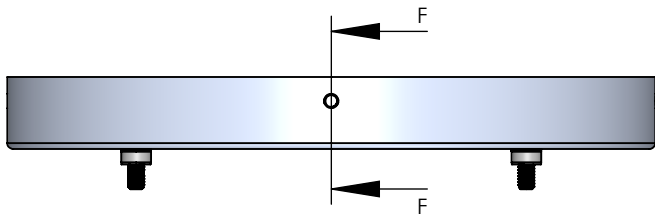
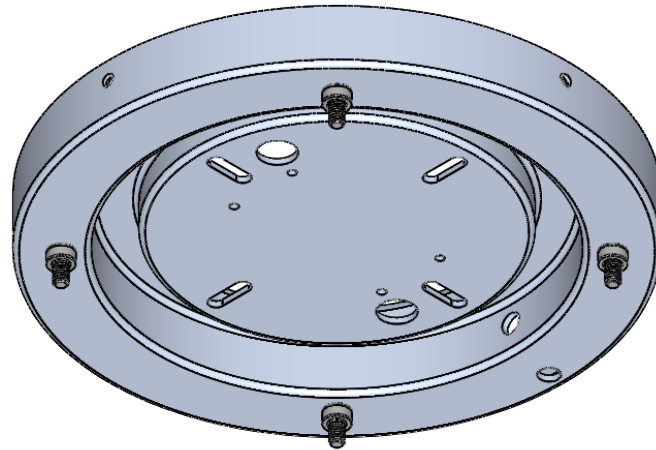
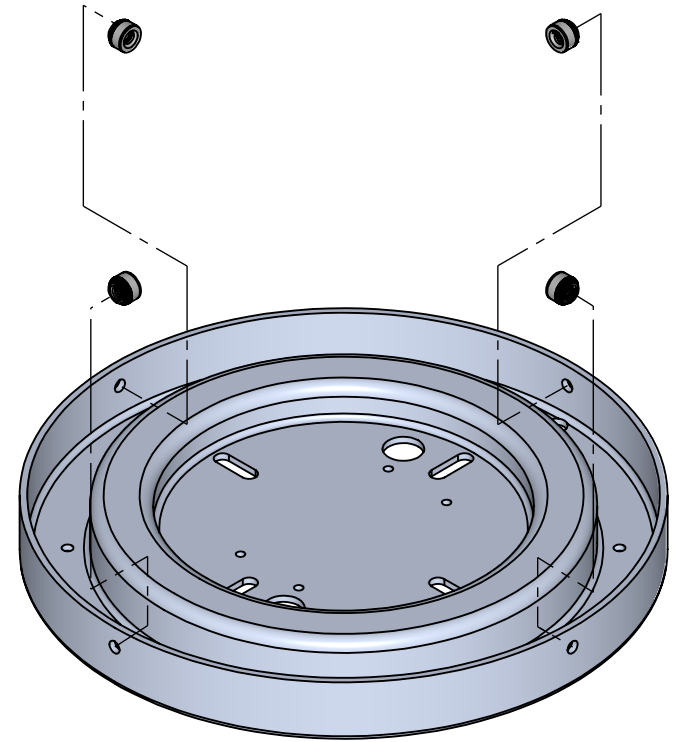
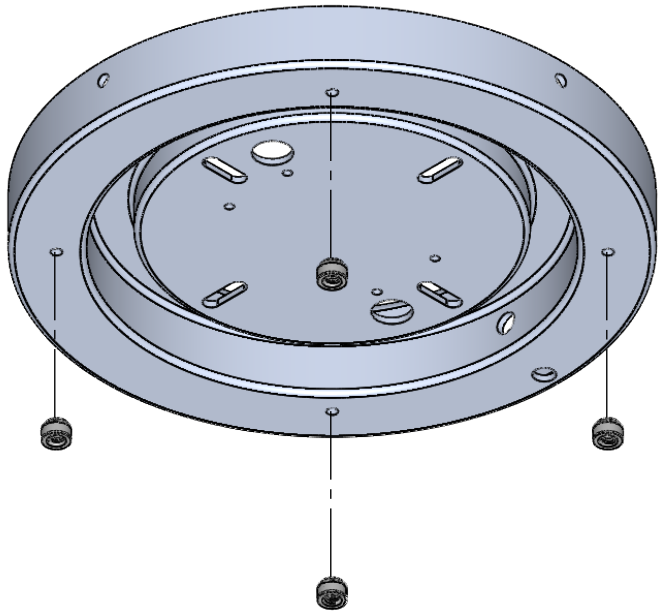
OVERHEAD VIEW



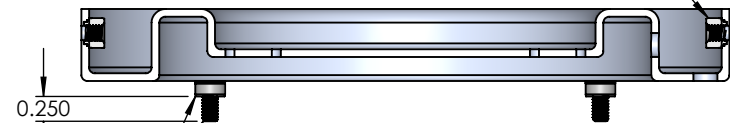
UNDERSIDE VIEW

PROPRIETARY AND CONFIDENTIAL
THE INFORMATION CONTAINED IN THIS
DRAWING IS THE SOLE PROPERTY OF
<INSERT COMPANY NAME HERE>. ANY
REPRODUCTION IN PART OR AS A WHOLE
WITHOUT THE WRITTEN PERMISSION OF
<INSERT COMPANY NAME HERE> IS
PROHIBITED.

		UNLESS OTHERWISE SPECIFIED:	NAME	DATE	SPUN ALUMINUM 0.080"	
		DIMENSIONS ARE IN INCHES	DRAWN		TITLE:	
		TOLERANCES:	CHECKED		STNLP-7"-10W-AA-A-XXK	
		FRACTIONAL ±	ENG APPR.		SIZE	DWG. NO.
		ANGULAR: MACH ± BEND ±	MFG APPR.		A	REV
		TWO PLACE DECIMAL ±	Q.A.		SCALE: 1:3	WEIGHT:
		THREE PLACE DECIMAL ±	COMMENTS:			SHEET 5 OF 12
NEXT ASSY	USED ON	INTERPRET GEOMETRIC TOLERANCING PER:				
		MATERIAL				
		FINISH				
APPLICATION		DO NOT SCALE DRAWING				



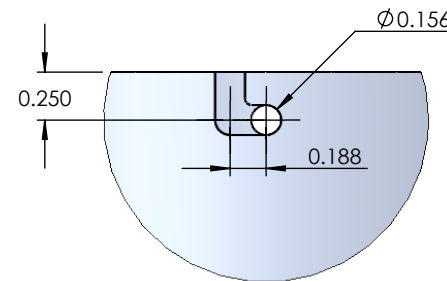
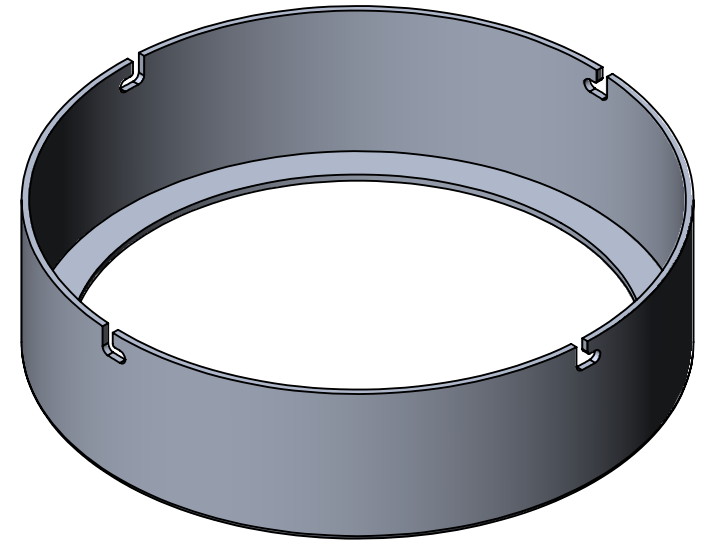
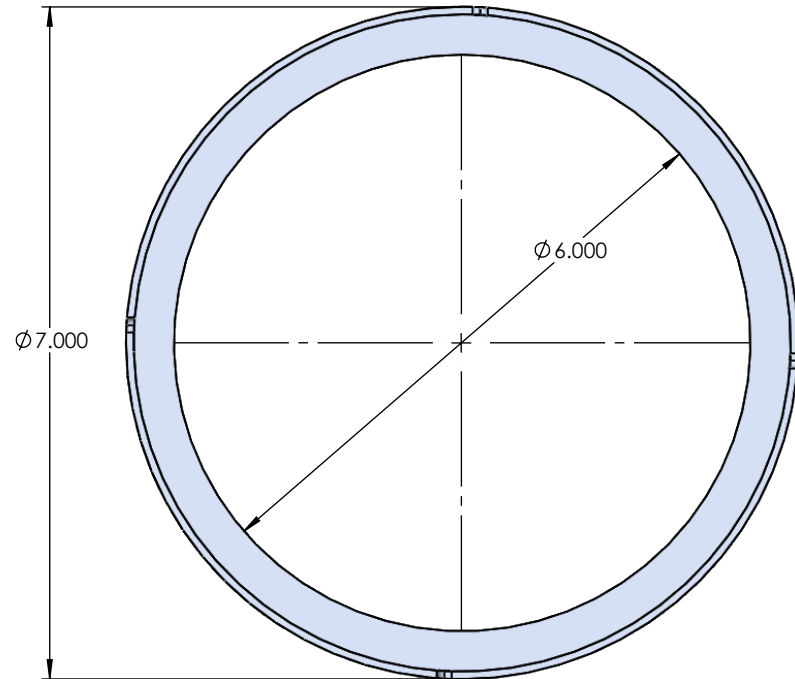
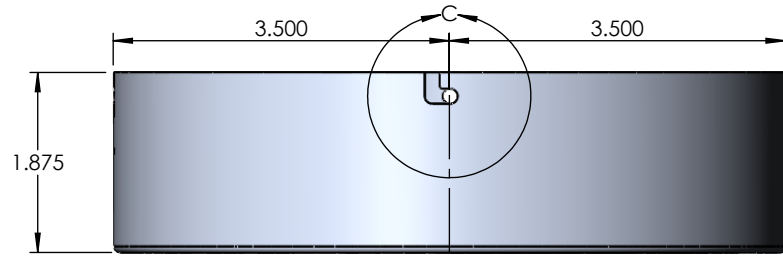
**PRESS FIT INSERTS WITH
1/4" THREADED STUD**



**PRESS FIT INSERTS FOR
SPUN COVER SCREWS**

SECTION F-F
SCALE 1 : 2

ITEM NO.	PART NUMBER	DESCRIPTION	QTY.
1	STNLP-7"-10W-AA-A-XXK-SPUN COVER	SPUN ALUMINUM 0.080"	1



DETAIL C
SCALE 1 : 1

PROPRIETARY AND CONFIDENTIAL
THE INFORMATION CONTAINED IN THIS DRAWING IS THE SOLE PROPERTY OF <INSERT COMPANY NAME HERE>. ANY REPRODUCTION IN PART OR AS A WHOLE WITHOUT THE WRITTEN PERMISSION OF <INSERT COMPANY NAME HERE> IS PROHIBITED.

		UNLESS OTHERWISE SPECIFIED:	NAME	DATE
		DIMENSIONS ARE IN INCHES TOLERANCES: FRACTIONAL ± ANGULAR: MACH ± BEND ± TWO PLACE DECIMAL ± THREE PLACE DECIMAL ±	DRAWN	
		INTERPRET GEOMETRIC TOLERANCING PER:	CHECKED	
		MATERIAL	ENG APPR.	
		FINISH	MFG APPR.	
NEXT ASSY	USED ON		Q.A.	
APPLICATION		DO NOT SCALE DRAWING	COMMENTS:	

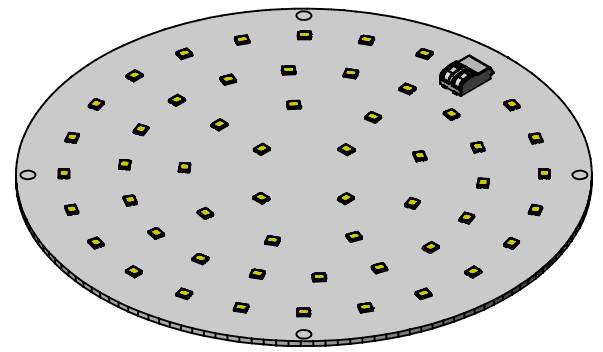
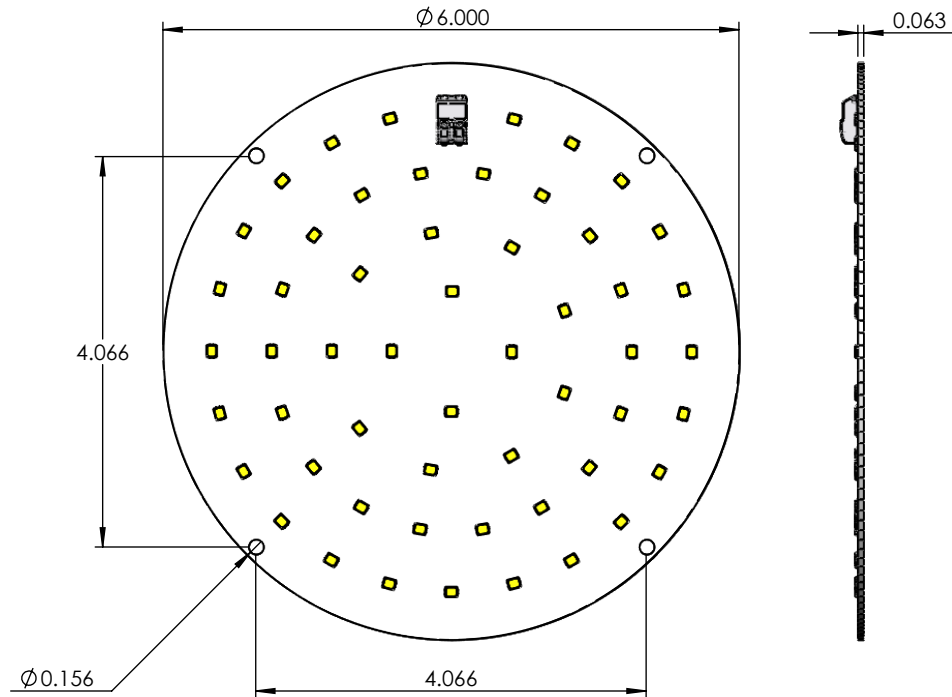
SPUN ALUMINUM 0.080"

TITLE:

STNLP-7"-10W-AA-A-XXK

SIZE	DWG. NO.	REV
A		

SCALE: 1:2 WEIGHT: SHEET 7 OF 12



PROPRIETARY AND CONFIDENTIAL
 THE INFORMATION CONTAINED IN THIS DRAWING IS THE SOLE PROPERTY OF <INSERT COMPANY NAME HERE>. ANY REPRODUCTION IN PART OR AS A WHOLE WITHOUT THE WRITTEN PERMISSION OF <INSERT COMPANY NAME HERE> IS PROHIBITED.

		UNLESS OTHERWISE SPECIFIED:		NAME	DATE	10-WATT LED PUCK	
		DIMENSIONS ARE IN INCHES	DRAWN			TITLE:	
		TOLERANCES:	CHECKED			STNLP-7"-10W-AA-A-XXK	
		FRACTIONAL ±	ENG APPR.			SIZE	DWG. NO.
		ANGULAR: MACH ± BEND ±	MFG APPR.			A	REV
		TWO PLACE DECIMAL ±	Q.A.			SCALE: 1:2	WEIGHT:
		THREE PLACE DECIMAL ±	COMMENTS:				SHEET 8 OF 12
		INTERPRET GEOMETRIC TOLERANCING PER:					
		MATERIAL					
	NEXT ASSY	USED ON					
		FINISH					
	APPLICATION	DO NOT SCALE DRAWING					

SPUN COVER BOLTS

**SINGLE-GANG RECTANGULAR
ELECTRICAL BOX
(EXISTING)**

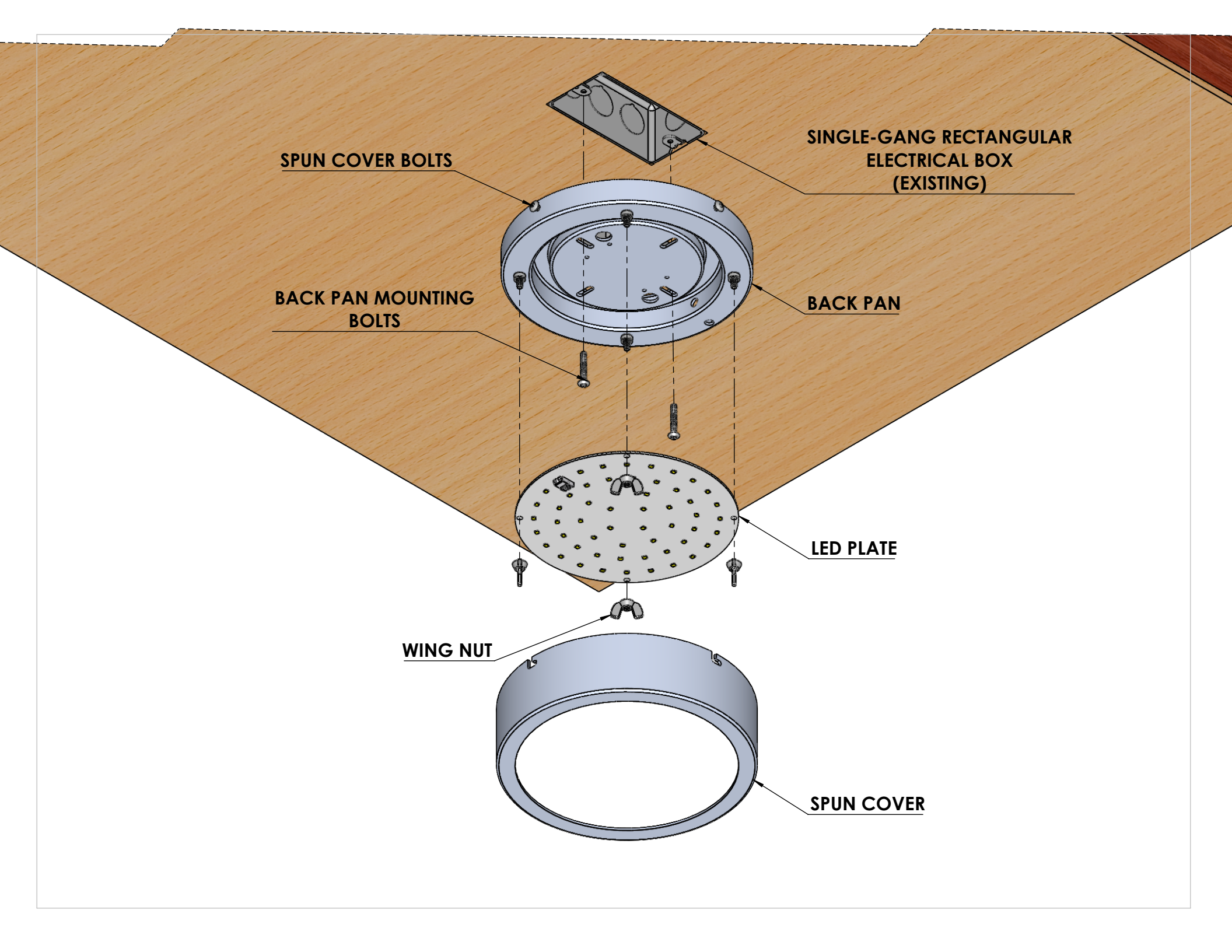
**BACK PAN MOUNTING
BOLTS**

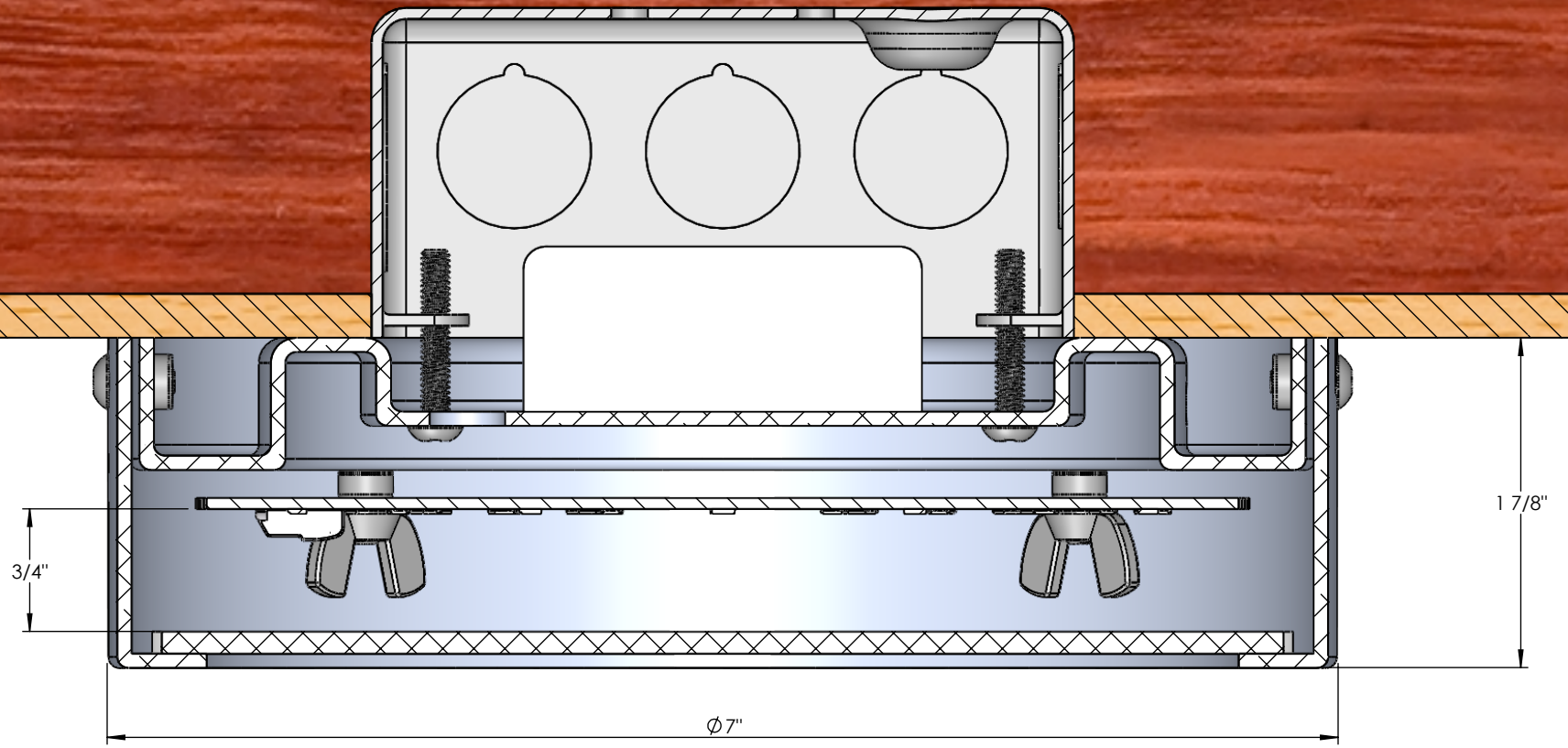
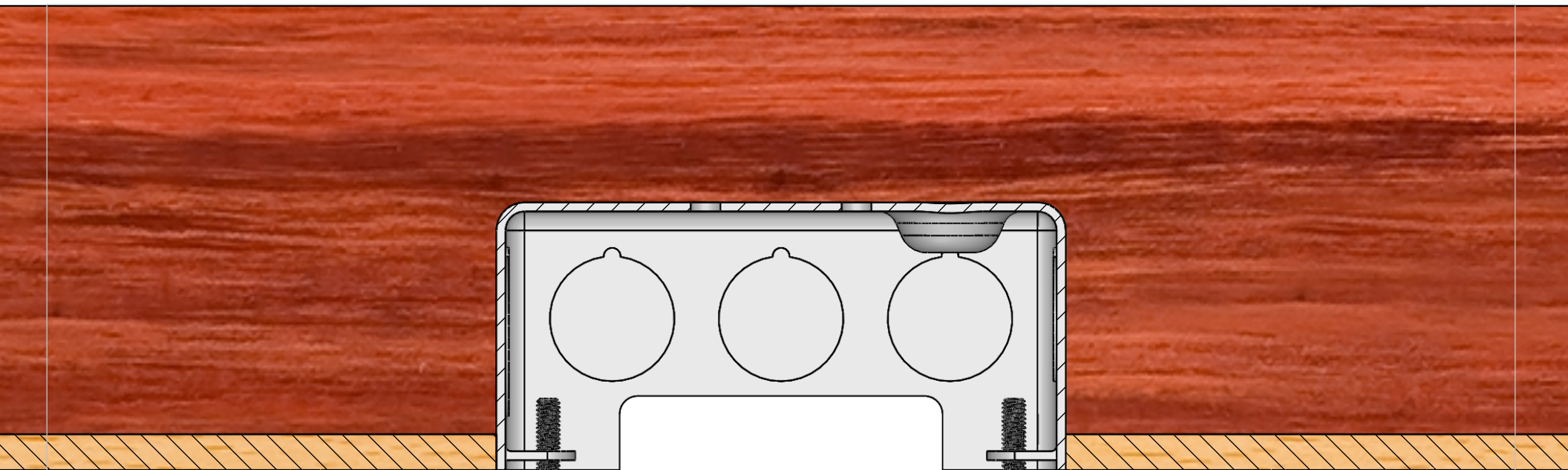
BACK PAN

LED PLATE

WING NUT

SPUN COVER





SPUN COVER BOLTS

**4-O ROUND ELECTRICAL BOX
(EXISTING)**

BACK PAN

**BACK PAN MOUNTING
BOLTS**

LED PLATE

WING NUT

SPUN COVER

