

ITEM NO.	PART NUMBER	DESCRIPTION	QTY.	CUT
1	STNLP-12"-18W-AA-A-XXK-SPUN COVER	SPUN ALUMINUM 0.080"	1	
2	STNLP-12"-18W-AA-A-XXK-SPUN BACKPAN	SPUN ALUMINUM 0.080"	1	
3	STNLP-12"-18W-AA-A-XXK-ACRYLIC	ACRYLIC LENS	1	
4	92268A180	Press-Fit Nuts for Sheet Metal	8	
5	92949A194	18-8 SS Hex Drive Screw	4	
6	92949A194	HEX ROUNDED SCREWS (#8-32 THREAD) 3/8" L	4	
7	98164A143	ROUNDED SCREWS (#8-32 THREAD) 1" L	2	
8	90866A009	Zinc-Plated Steel Wing Nut	4	
9	AC29CD700AT2Q LED DRIVER	DRIVER	1	
10	PCN-2250-160X.1-11-700	18-WATT LED PUCK	1	

UNLESS OTHERWISE SPECIFIED:

DIMENSIONS ARE IN INCHES
 TOLERANCES:
 FRACTIONAL ± .003
 ANGULAR: MACH ± .01 BEND ±
 TWO PLACE DECIMAL ±
 THREE PLACE DECIMAL ±.001

INTERPRET GEOMETRIC
 TOLERANCING PER:

MATERIAL

FINISH

NAME

DATE

DRAWN

CHECKED

ENG APPR.

MFG APPR.

Q.A.

COMMENTS:

TITLE:

STNLP-12"-18W-AA-A-XXK

SIZE
A

DWG. NO.

REV

SCALE: 1:5

WEIGHT:

SHEET 1 OF 12

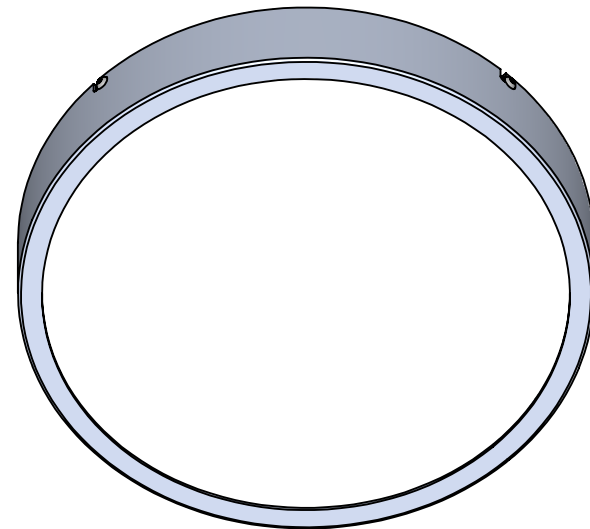
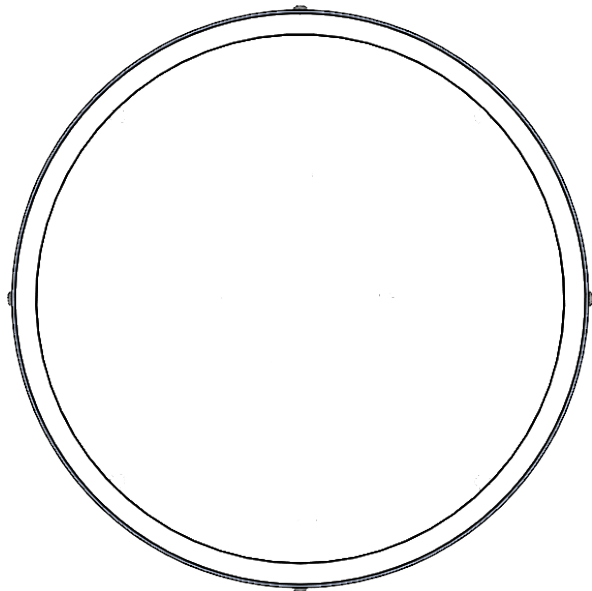
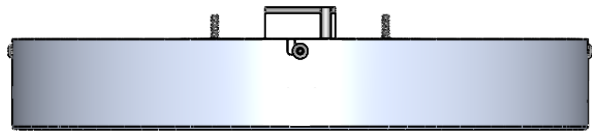
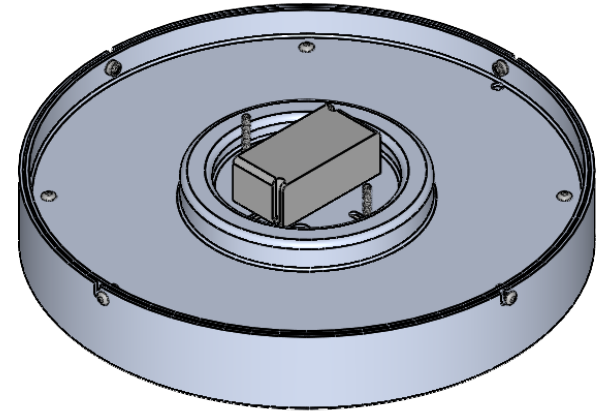
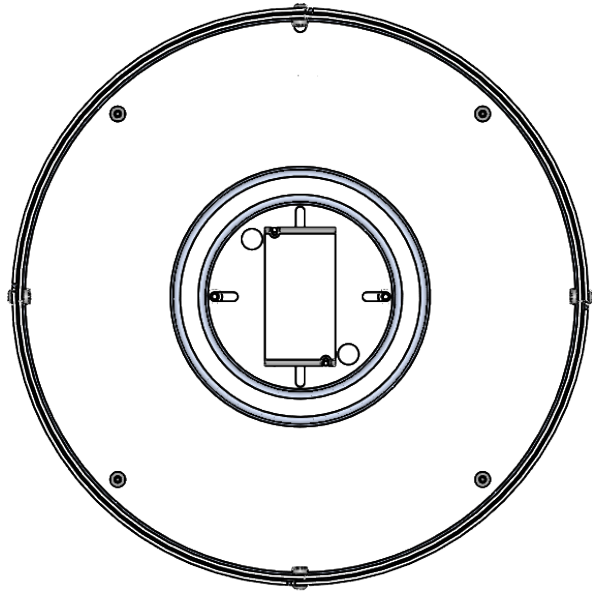
EVERGREEN LIGHTING

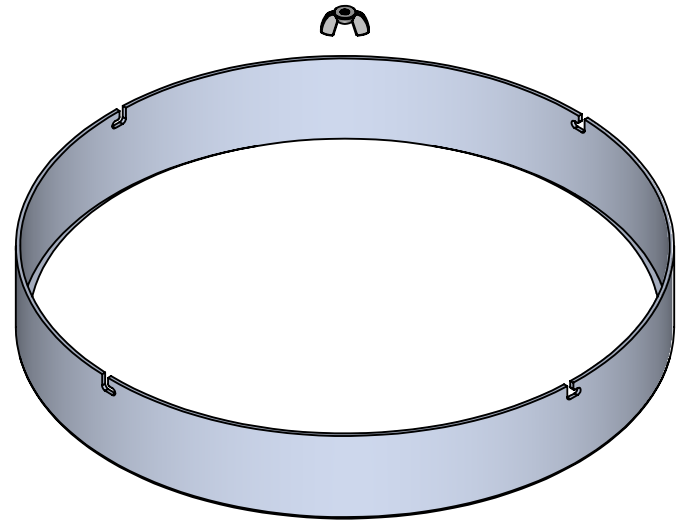
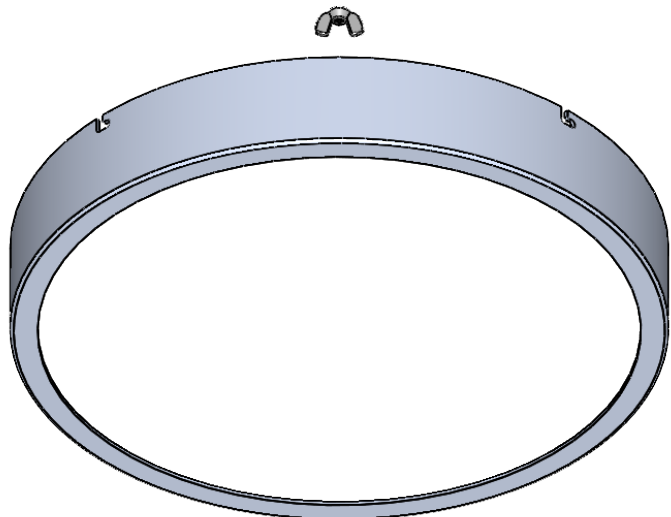
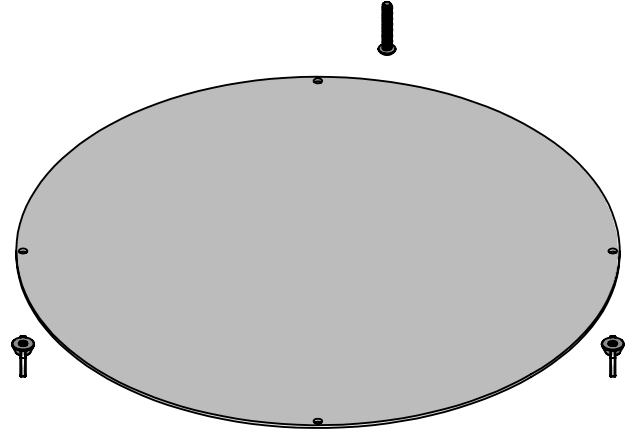
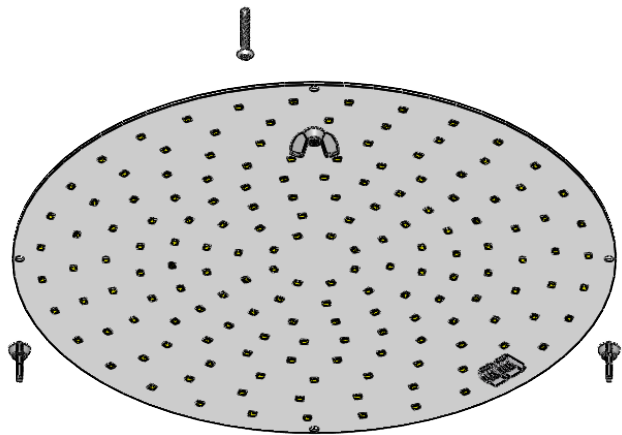
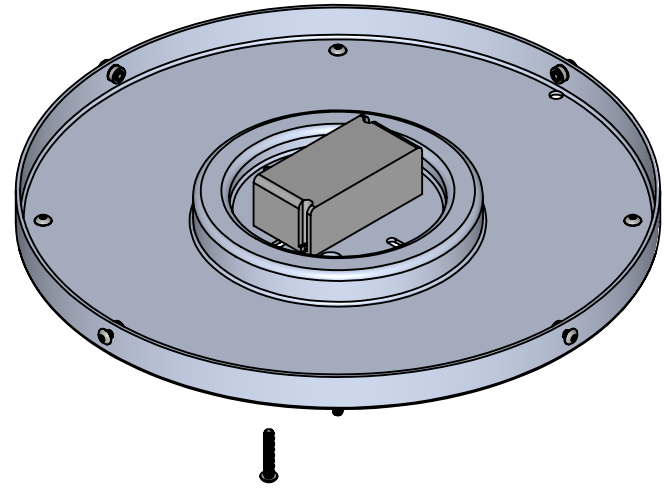
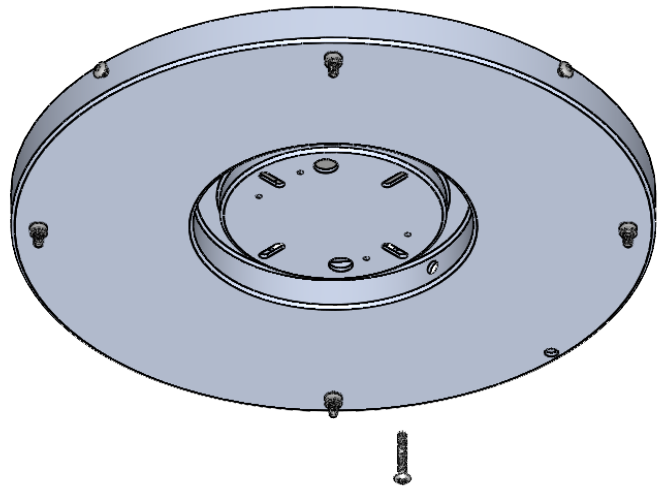
ALL BEND RADIUS .030"

APPLICATION

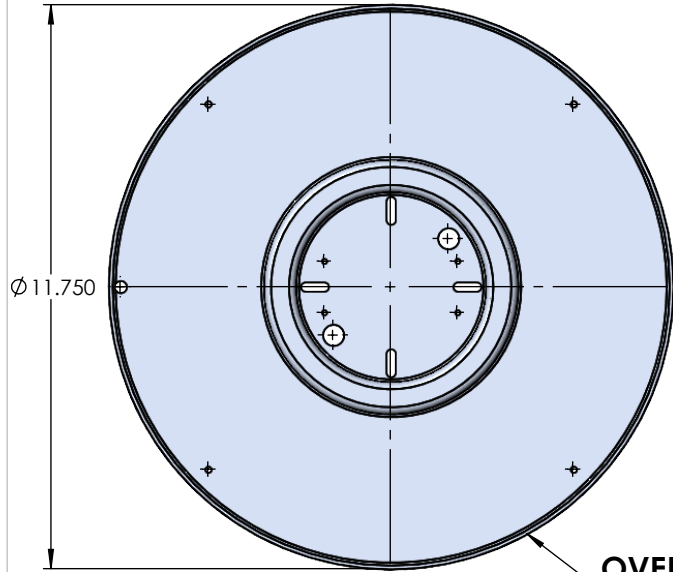
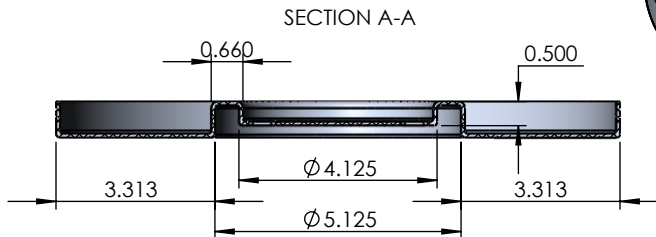
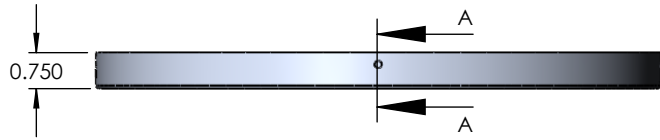
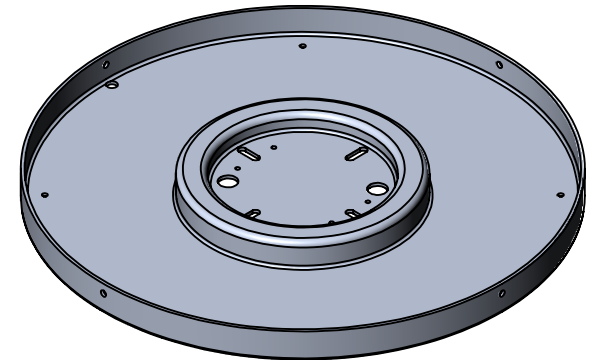
DO NOT SCALE DRAWING



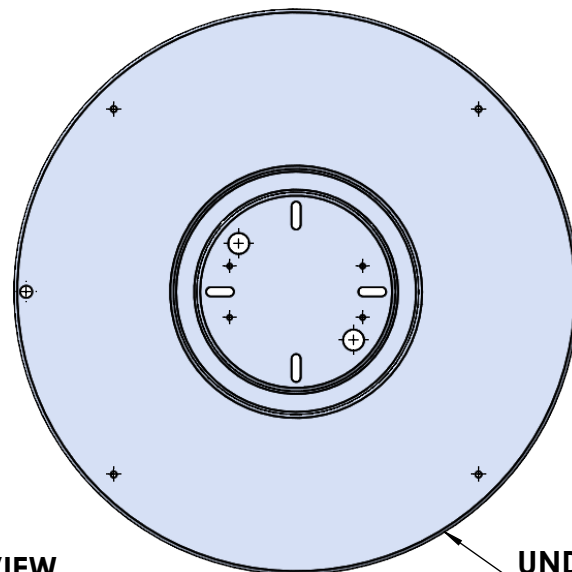




ITEM NO.	PART NUMBER	DESCRIPTION	QTY.
1	STNLP-12"-18W-AA-A-XXK-SPUN BACKPAN	SPUN ALUMINUM 0.080"	1



OVERHEAD VIEW



UNDERSIDE VIEW

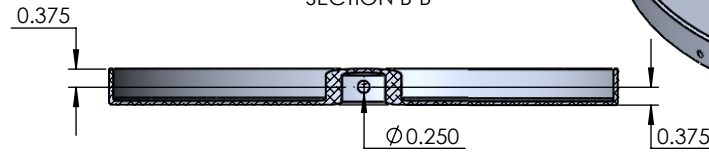
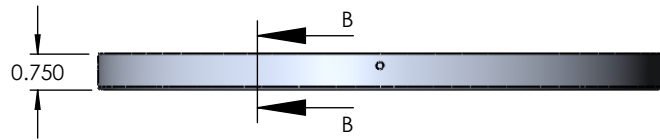
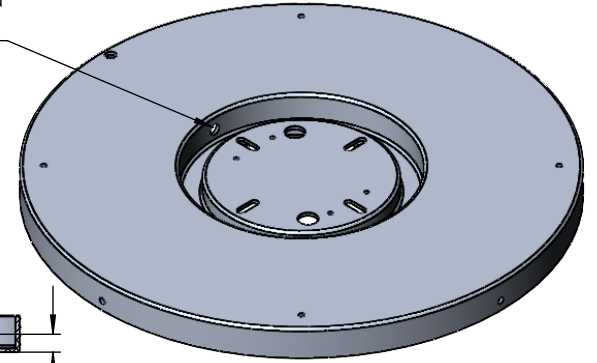
PROPRIETARY AND CONFIDENTIAL
 THE INFORMATION CONTAINED IN THIS DRAWING IS THE SOLE PROPERTY OF <INSERT COMPANY NAME HERE>. ANY REPRODUCTION IN PART OR AS A WHOLE WITHOUT THE WRITTEN PERMISSION OF <INSERT COMPANY NAME HERE> IS PROHIBITED.

		UNLESS OTHERWISE SPECIFIED:	NAME	DATE
		DIMENSIONS ARE IN INCHES	DRAWN	
		TOLERANCES:	CHECKED	
		FRACTIONAL ±	ENG APPR.	
		ANGULAR: MACH ± BEND ±	MFG APPR.	
		TWO PLACE DECIMAL ±	Q.A.	
		THREE PLACE DECIMAL ±	COMMENTS:	
		INTERPRET GEOMETRIC TOLERANCING PER:		
		MATERIAL		
NEXT ASSY	USED ON	FINISH		
APPLICATION		DO NOT SCALE DRAWING		

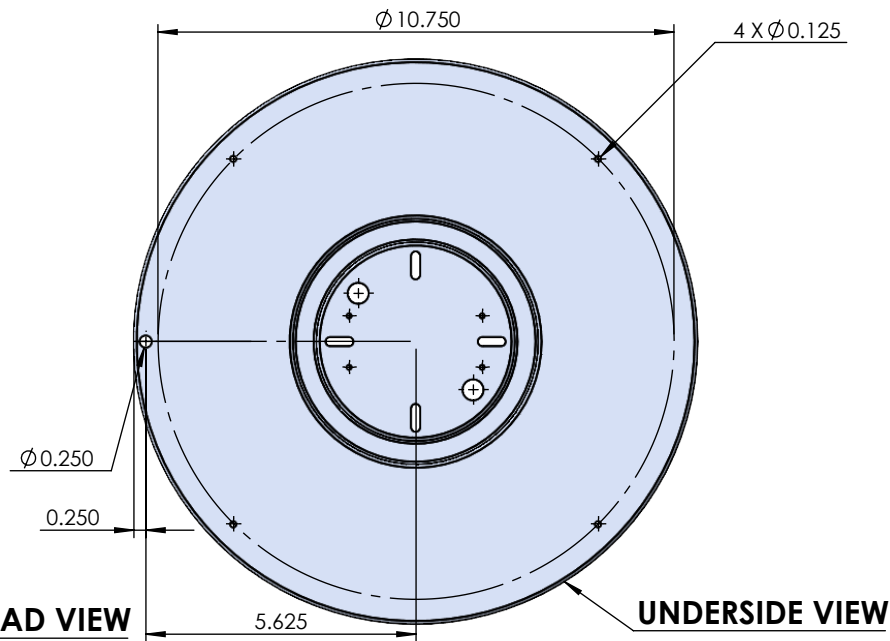
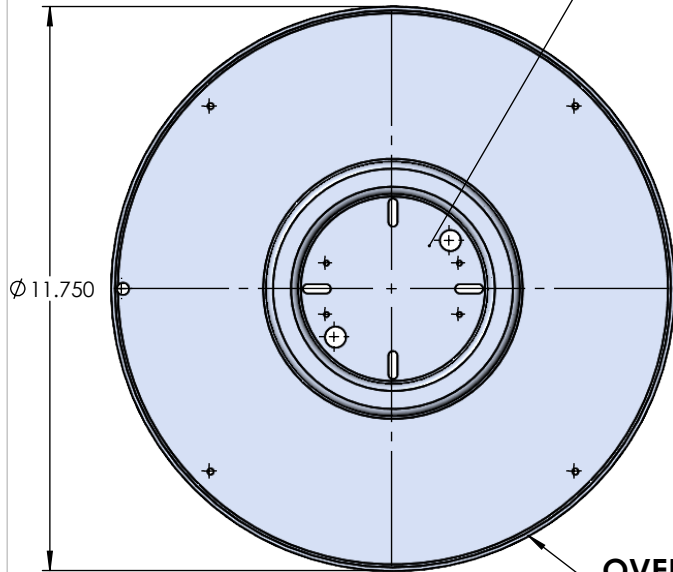
SPUN ALUMINUM 0.080"		
TITLE:		
STNLP-12"-18W-AA-A-XXK		
SIZE	DWG. NO.	REV
A		
SCALE: 1:4	WEIGHT:	SHEET 4 OF 12

ITEM NO.	PART NUMBER	DESCRIPTION	QTY.
1	STNLP-7"-10W-AA-A-XXK-SPUN BACKPAN	SPUN ALUMINUM 0.080"	1

SECTION B-B HOLE ON
INNER WALL ONLY

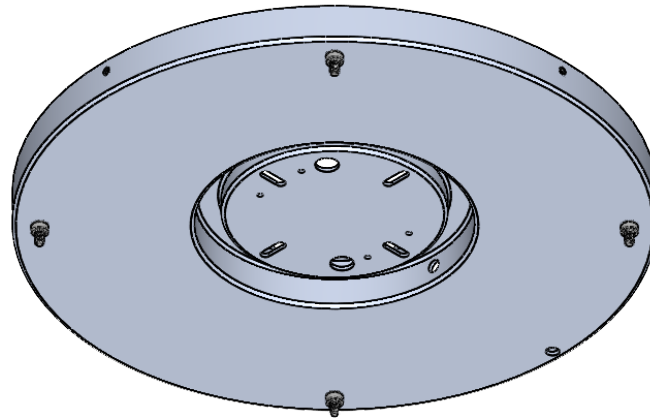
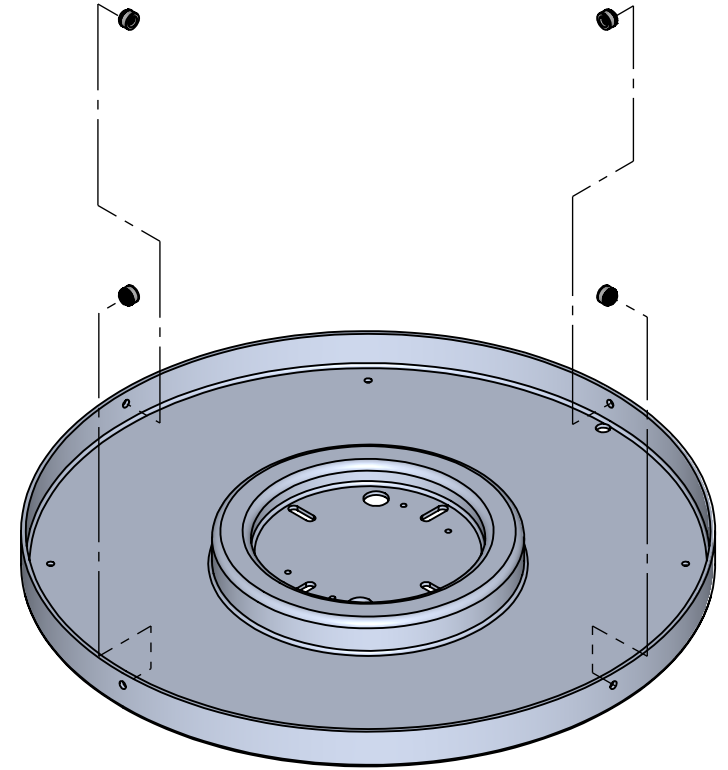
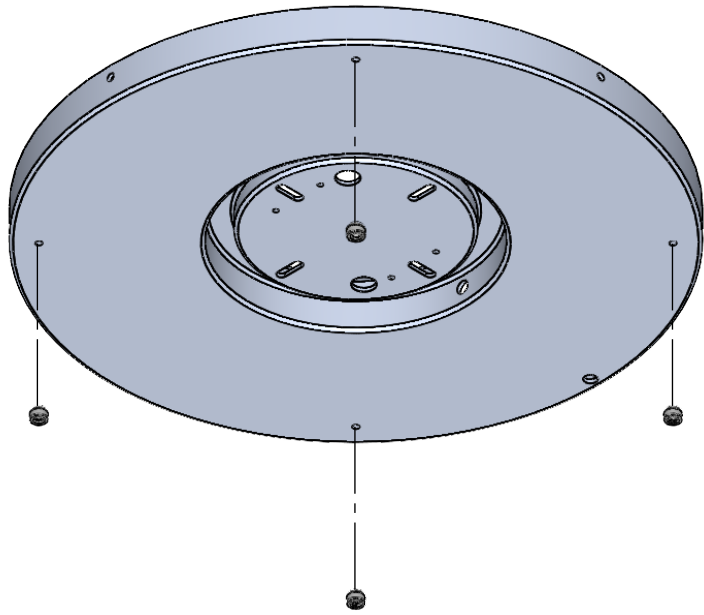


ALL INNER HOLES/SLOTS DETERMINED BY
BLANKS OR BY TEMPLATE

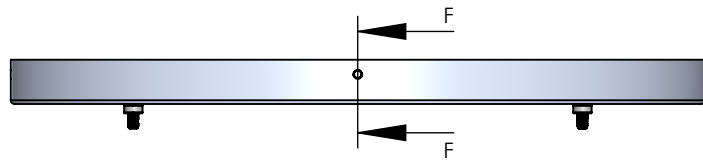


PROPRIETARY AND CONFIDENTIAL
THE INFORMATION CONTAINED IN THIS
DRAWING IS THE SOLE PROPERTY OF
<INSERT COMPANY NAME HERE>. ANY
REPRODUCTION IN PART OR AS A WHOLE
WITHOUT THE WRITTEN PERMISSION OF
<INSERT COMPANY NAME HERE> IS
PROHIBITED.

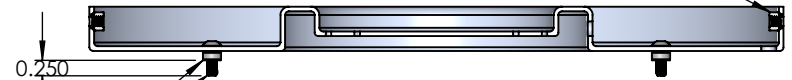
		UNLESS OTHERWISE SPECIFIED:		NAME	DATE	SPUN ALUMINUM 0.080"	
		DIMENSIONS ARE IN INCHES	DRAWN			TITLE:	
		TOLERANCES:	CHECKED			STNLP-12"-18W-AA-A-XXK	
		FRACTIONAL ±	ENG APPR.			SIZE	DWG. NO.
		ANGULAR: MACH ± BEND ±	MFG APPR.			A	REV
		TWO PLACE DECIMAL ±	Q.A.			SCALE: 1:4	WEIGHT:
		THREE PLACE DECIMAL ±	COMMENTS:				SHEET 5 OF 12
		INTERPRET GEOMETRIC TOLERANCING PER:					
		MATERIAL					
	NEXT ASSY	FINISH					
		USED ON					
	APPLICATION	DO NOT SCALE DRAWING					



**PRESS FIT INSERTS FOR
SPUN COVER SCREWS**

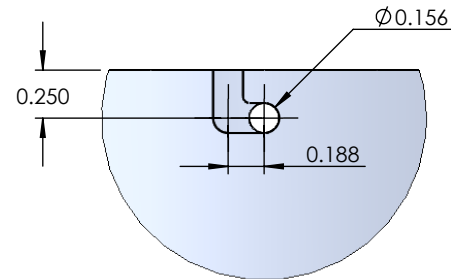
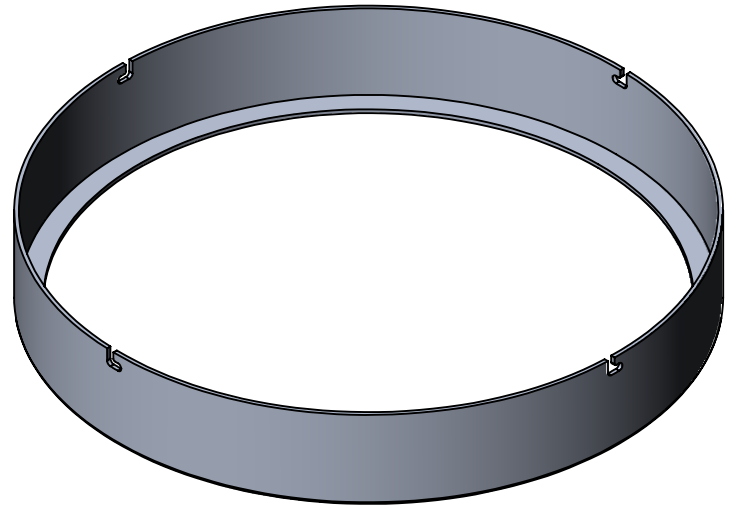
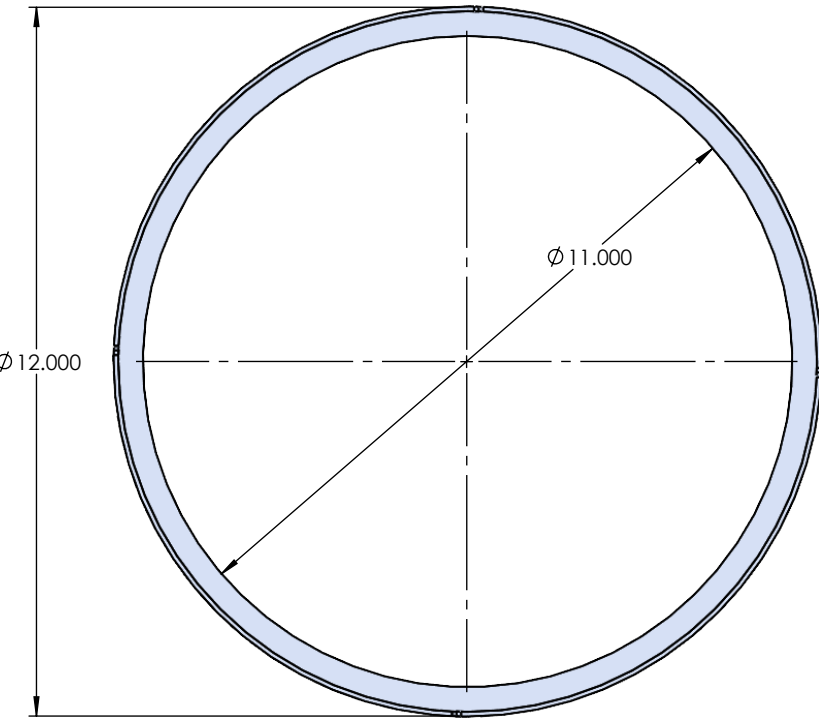
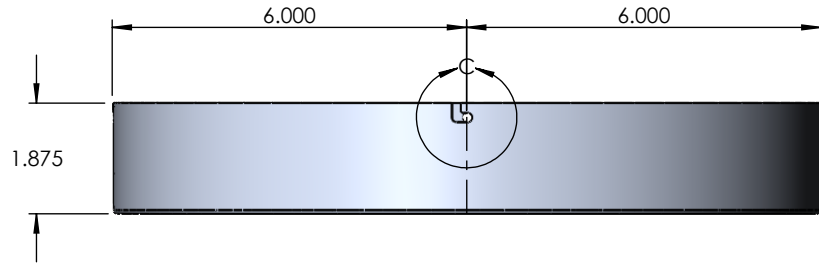


**PRESS FIT INSERTS WITH
1/4" THREADED STUD**



SECTION F-F

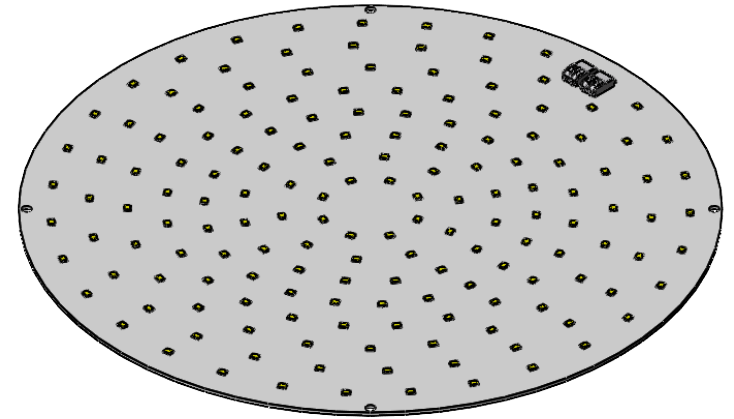
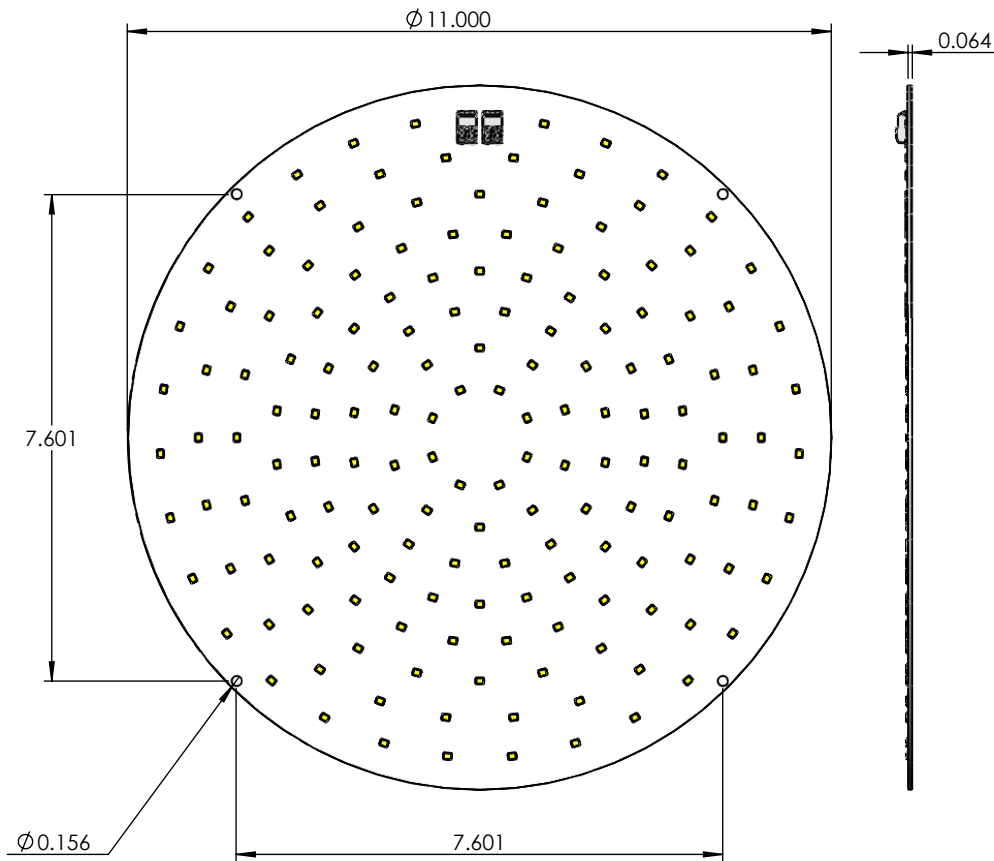
ITEM NO.	PART NUMBER	DESCRIPTION	QTY.
1	STNLP-12"-18W-AA-A-XXK-SPUN COVER	SPUN ALUMINUM 0.080"	1



DETAIL C
SCALE 1 : 1

PROPRIETARY AND CONFIDENTIAL
THE INFORMATION CONTAINED IN THIS DRAWING IS THE SOLE PROPERTY OF <INSERT COMPANY NAME HERE>. ANY REPRODUCTION IN PART OR AS A WHOLE WITHOUT THE WRITTEN PERMISSION OF <INSERT COMPANY NAME HERE> IS PROHIBITED.

		UNLESS OTHERWISE SPECIFIED:	NAME	DATE	SPUN ALUMINUM 0.080"	
		DIMENSIONS ARE IN INCHES	DRAWN		TITLE:	
		TOLERANCES:	CHECKED		STNLP-12"-18W-AA-A-XXK	
		FRACTIONAL ±	ENG APPR.		SIZE DWG. NO. REV	
		ANGULAR: MACH ± BEND ±	MFG APPR.		A	
		TWO PLACE DECIMAL ±	Q.A.		SCALE: 1:3.25 WEIGHT: SHEET 7 OF 12	
		THREE PLACE DECIMAL ±	COMMENTS:			
	NEXT ASSY	MATERIAL				
	USED ON	FINISH				
	APPLICATION	DO NOT SCALE DRAWING				



PROPRIETARY AND CONFIDENTIAL
 THE INFORMATION CONTAINED IN THIS DRAWING IS THE SOLE PROPERTY OF <INSERT COMPANY NAME HERE>. ANY REPRODUCTION IN PART OR AS A WHOLE WITHOUT THE WRITTEN PERMISSION OF <INSERT COMPANY NAME HERE> IS PROHIBITED.

		UNLESS OTHERWISE SPECIFIED:		NAME	DATE
		DIMENSIONS ARE IN INCHES		DRAWN	
		TOLERANCES:		CHECKED	
		FRACTIONAL ±		ENG APPR.	
		ANGULAR: MACH ± BEND ±		MFG APPR.	
		TWO PLACE DECIMAL ±		Q.A.	
		THREE PLACE DECIMAL ±		COMMENTS:	
		INTERPRET GEOMETRIC TOLERANCING PER:			
		MATERIAL			
		FINISH			
NEXT ASSY	USED ON				
APPLICATION	DO NOT SCALE DRAWING				

18-WATT LED PUCK		
TITLE:		
STNLP-12"-18W-AA-A-XXK		
SIZE	DWG. NO.	REV
A		
SCALE: 1:3	WEIGHT:	SHEET 8 OF 12

SPUN COVER BOLTS

**SINGLE-GANG RECTANGULAR
ELECTRICAL BOX
(EXISTING)**

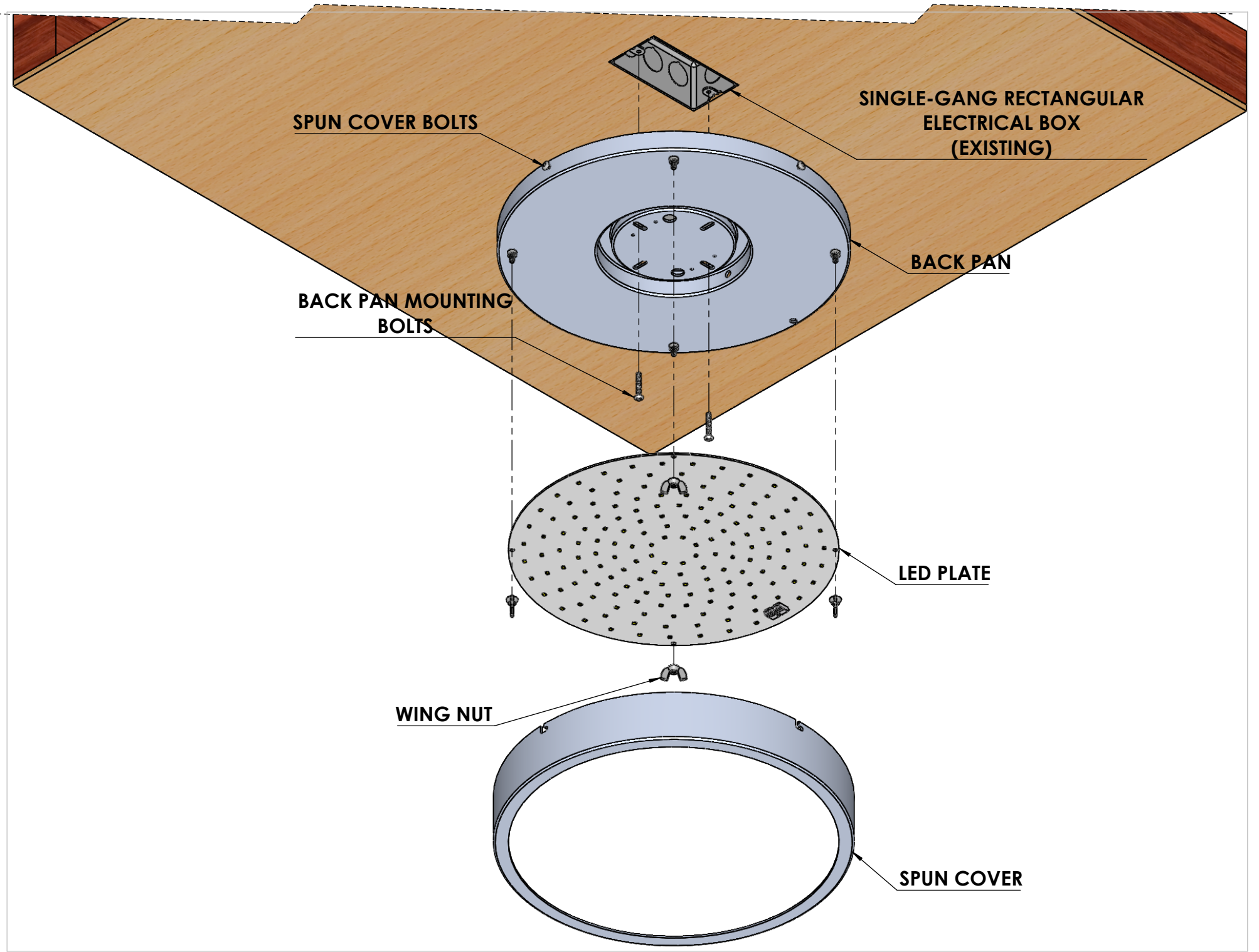
BACK PAN

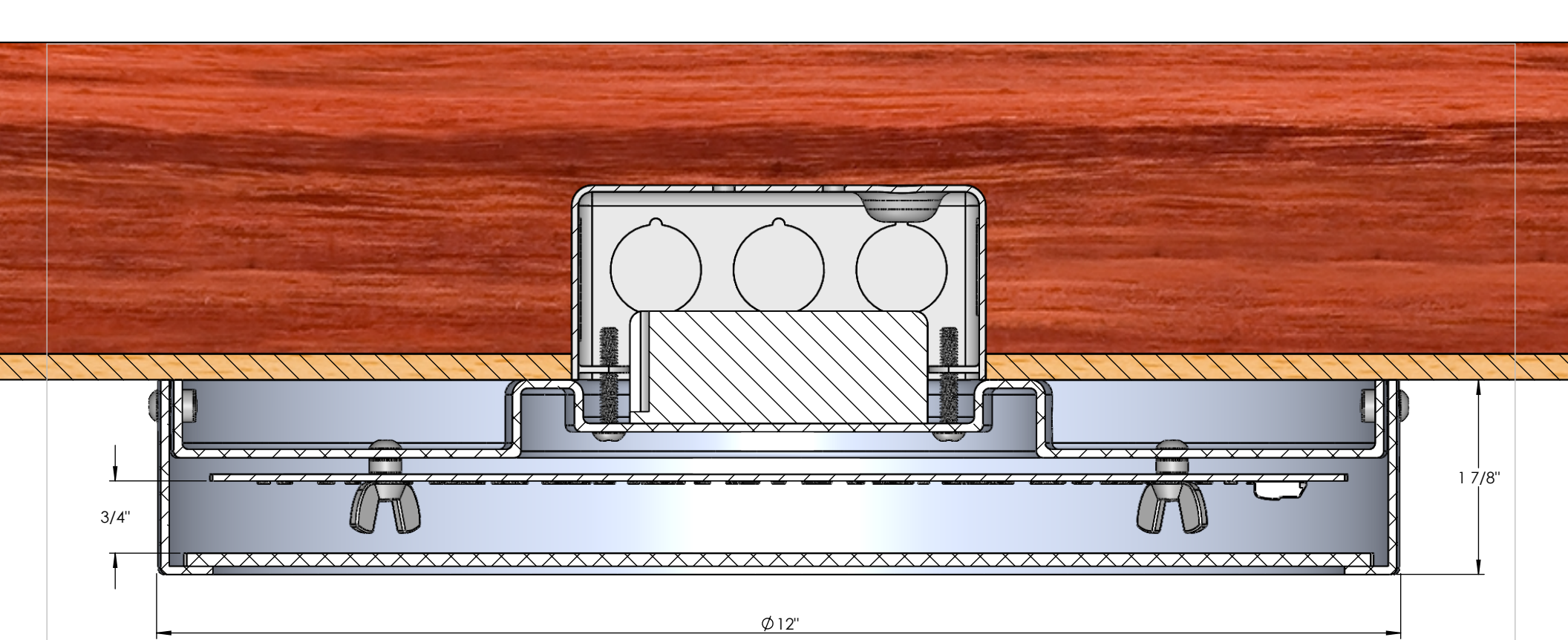
**BACK PAN MOUNTING
BOLTS**

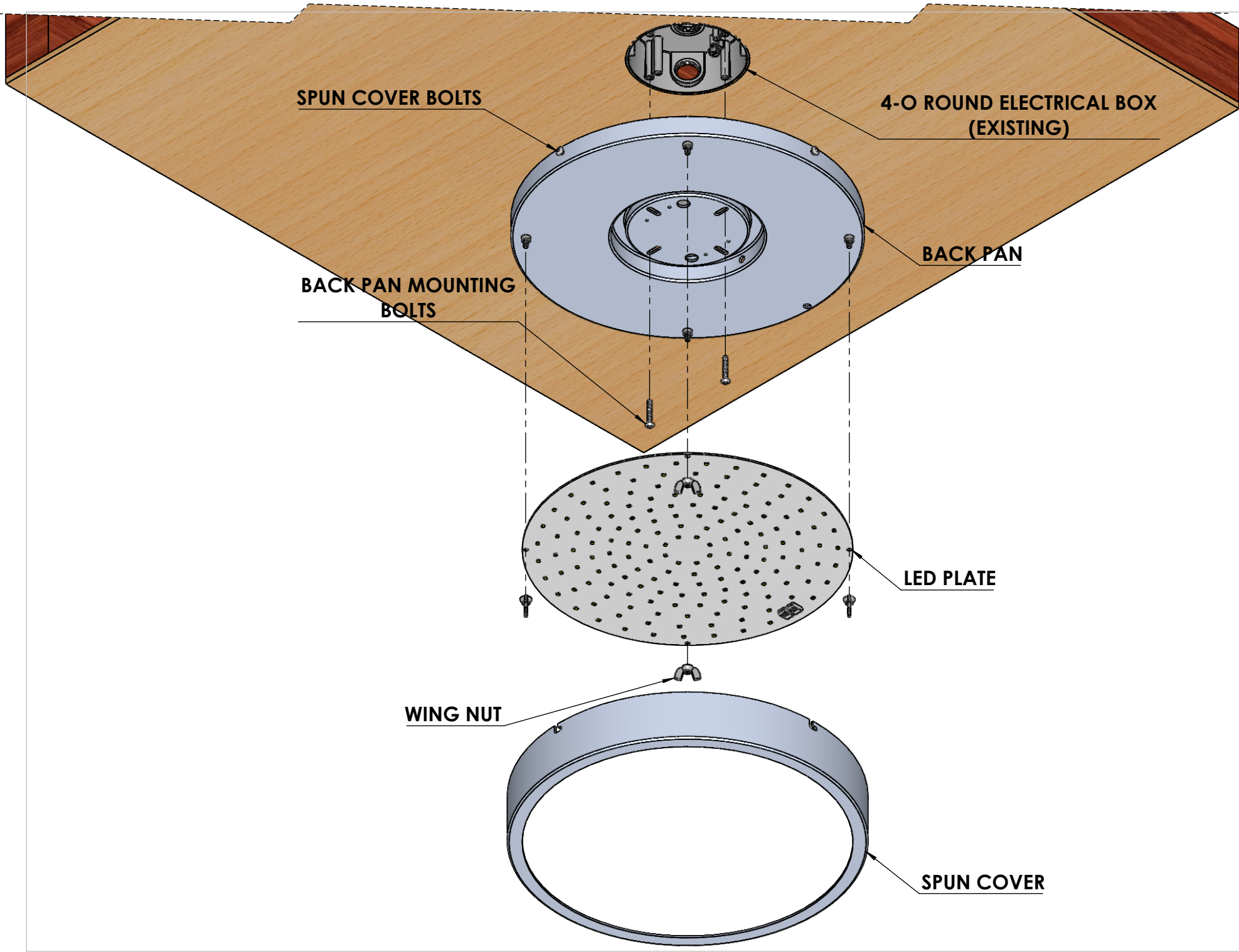
LED PLATE

WING NUT

SPUN COVER







SPUN COVER BOLTS

**4-O ROUND ELECTRICAL BOX
(EXISTING)**

BACK PAN

**BACK PAN MOUNTING
BOLTS**

LED PLATE

WING NUT

SPUN COVER

